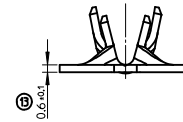
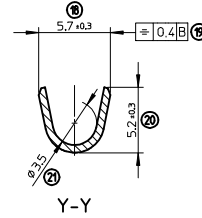
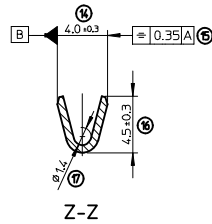
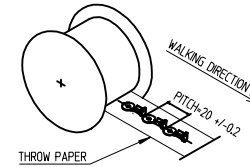


SECTIONS



PACKAGING

STANDARD REEL
PARTS PER REEL : 5500



MARKING :

- 1 - ENGINEERING CONTROL ID

NOTES :

- 1 - MATERIAL : BRASS
- 2 - PLATING : PRE-TIN PLATED
- 3 - CRIMPING RANGE (mm²) : 1 TO 3
- 4 - PACKAGING : PARTS DELIVERED ON STRIP (SEE VIEW)

INSPECTION BALLOON NUMBER LOG

PER DRAWING REVISION : A
LAST BALLOON NUMBER USED : 21
ADDED BALLOON NUMBERS : NONE
REMOVED BALLOON NUMBERS : NONE

FIRST RELEASE EC NO: G2014-0032 DRAWN: PBOSSQUAIN 2013/10/17 CHKD: JDUCLLOS 2017/07/11 APPROV: PLESSIS 2017/09/28	QUALITY SYMBOLS ▽=0 ▽=0 ▽=0	GENERAL TOLERANCES (UNLESS SPECIFIED)		DIMENSION STYLE		SCALE	DESIGN UNITS	FIRST ANGLE PROJECTION	
				MM ONLY		5:1	METRIC		
						DRAWN BY	DATE		TITLE
						CHECKED BY	DATE		RING TERMINAL 6X10.5X0.6 1-3
				APPROVED BY		DATE	molex		
				MATERIAL NO.		DOCUMENT NO.	SHEET NO.		
				0988611042		SD-98861-008	1 OF 1		
		DRAFT WHERE APPLICABLE MUST REMAIN WITHIN DIMENSIONS		THIS DRAWING CONTAINS INFORMATION THAT IS PROPRIETARY TO MOLEX INCORPORATED AND SHOULD NOT BE USED WITHOUT WRITTEN PERMISSION					