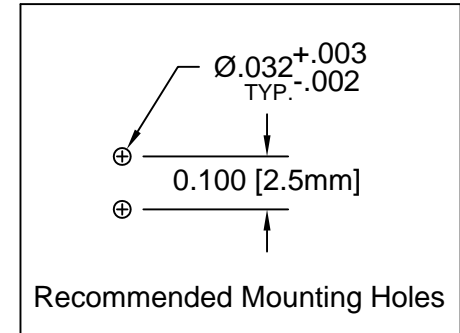
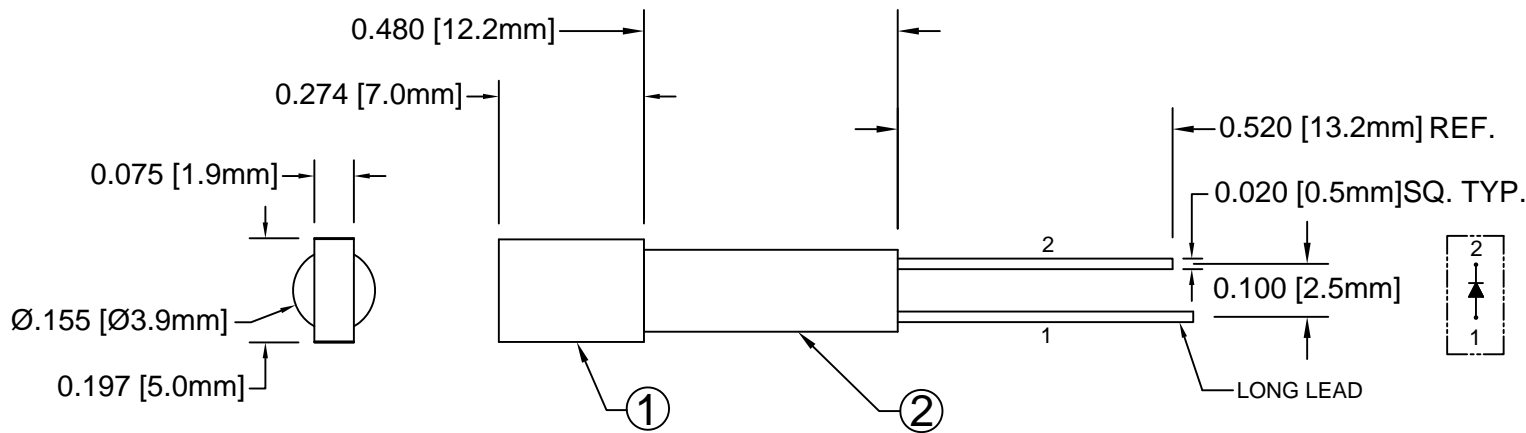


ITEM	Q'TY	PART NUMBER	PART DESCRIPTION
1	1	R5YD	2 x 5mm Rectangular LED
2	1	ELM 5-480	Extruded, Self-Retaining Narrow LED Spacer


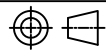
REV.	DESCRIPTION	DATE	APPROVED
A	Engineering Release	04/02/10	T. Y.
B	Engineering Update w/o Changes	05/25/16	J. C.



Chip			Lens Appearance	Absolute Max. Ratings			Electro-Optical Data @ 20mA			Viewing Angle 2 $\theta$ 1/2 (Deg)
Emitted Color	Peak Wave Length $\lambda_p$ (nm)	Material		Pd (mW)	If (mA)	Peak If(mA)	Vf (V)		Iv (mcd)	
							TYP	MAX	TYP	
YELLOW	590	GaAsP/GaP	85	30	150	2.0	2.8	8	120	

## ABSOLUTE MAXIMUM RATINGS (Ta=25°C)

REVERSE VOLTAGE \_\_\_\_\_ 5V  
 REVERSE CURRENT \_\_\_\_\_ 100uA  
 OPERATING TEMPERATURE RANGE \_\_\_\_\_ -25° C - 85° C  
 STORAGE TEMPERATURE \_\_\_\_\_ -30° C - 100° C  
 LEAD SOLDERING TEMPERATURE(1/16" FROM BODY) \_\_\_\_\_ 260° C FOR 5 SECONDS

STANDARD TOLERANCE (UNLESS OTHERWISE SPECIFIED)		 4 THOMAS, IRVINE, CA. 92618 TEL: (949) 951-8808 FAX: (949) 951-3974	
DECIMALS	ANGULAR		
.X ± .1	X° ± 1°		
.XX ± .02		 <b>TITLE:</b> EXTRUDED VERTICAL RCT 2X5 LED NARROW SPACER PROFILE ASSY	
.XXX ± .010			
DESIGNED: <b>R. Paje</b>	DATE: <b>04/02/10</b>	<b>PART NO:</b> ELM5480R5YD	REVISION: <b>B</b>
CHECKED: <b>T. Yin</b>	DATE: <b>04/02/10</b>	<b>CAGE CODE :</b> 32559	<b>SHEET # 1 OF 1</b>
CAD GENERATED DOCUMENT. DO NOT MEASURE DRAWING.			