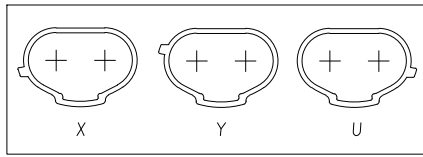
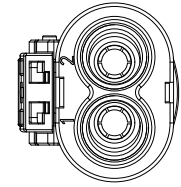
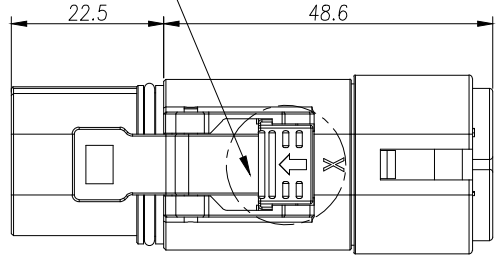
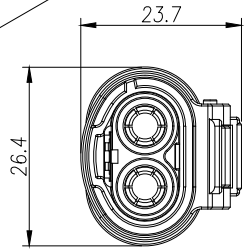
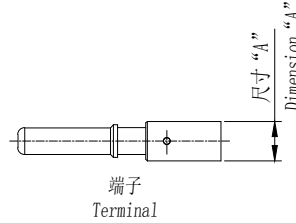


THIS DRAWING IS SUPPLIED FOR INFORMATION ONLY. DESIGN FEATURES, SPECIFICATIONS AND PERFORMANCE DATA SHOWN HEREON ARE THE PROPERTY OF THE AMPHENOL CORPORATION. NO RIGHTS OF REPRODUCTION ARE IMPLIED. ALL DIMENSIONS ARE SUBJECT TO NORMAL MANUFACTURING VARIATIONS.

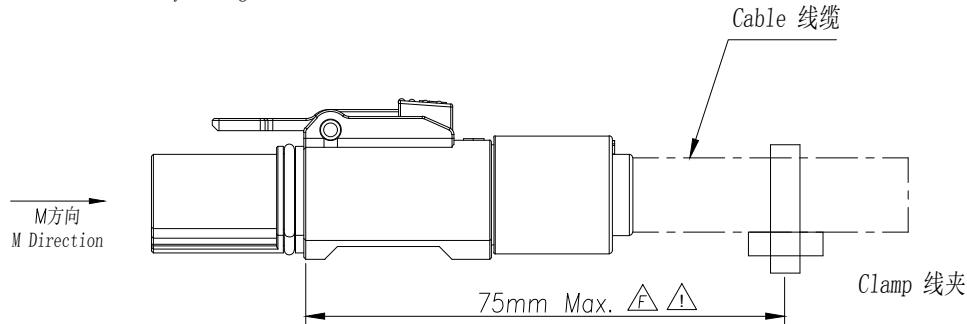
**Customer Drawing**



M方向键位示意图  
Key Abridged General View of M Direction



端子  
Terminal

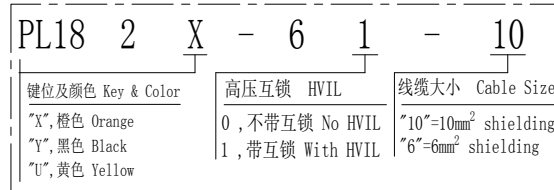


**Note:**  
Mechanical loads applied to the connector must be controlled by appropriate strain relief of the cable. No bend/twist/flex is allowed on cable prior to securement. Cable must be fixed to a point structurally contiguous with the receptacle connector within 75mm Max. from the mating interface of the plug and receptacle. No relative movement between receptacle and first cable securing device is permissible. Strain relief distance should be minimized for all applications

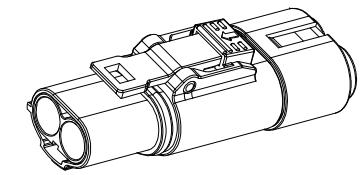
规格参数 (Spec.):

- 工作温度 Operating temperature: -40° C~+125° C.
- 额定电流 Current rating (connector only):  
6mm<sup>2</sup>: 45A, 10mm<sup>2</sup>: 60A.
- 额定电压 Operating voltage: 1000 VDC.
- 耐电压 Dielectric withstanding voltage: 5000 VDC.
- 防护等级 Protection class: IP67 & IP2X.
- 电磁屏蔽 Shielding.
- 机械寿命 Mating cycle: 100 Min.
- 带自动二次锁扣 Automatic secondary lock.
- 带高压互锁 Electrical interlock (HVIL).
- 对配插座见图纸 Mating receptacle see drawing: "PL082-60".

**订购信息 Ordering Information**



REV		ZONE		ECO		DESCRIPTION		DATE	BY	APPR
1	--	--	--	INITIAL RELEASE		11/21/13	RW	EC		
A1	--	--	--	Updated Spec.		07/17/14	RW	EC		
A2	--	--	--	Updated Back Cover		11/21/14	RW	EC		
B	--	--	--	Change The Color of Press Key & Recommended Wire OD		03/04/15	RW	EC		
B1	--	--	--	Add dimension of terminal		04/28/15	RW	EC		
C	--	--	--	Add key abridged general view		09/17/15	RW	TS		
D	--	--	--	Change pin for 4mm2 wire		11/03/15	RW	TS		
E	--	--	--	Updated Spec.		11/08/16	SW	TS		
F	--	--	--	Add Suggestion For Mounting and Installation		06/28/17	JL	JG		
G	--	--	--	Add rating current		02/07/18	YM	JG		
H	--	--	--	Updated Spec.		08/24/18	Fred	JL		



**Standard Part List (With HVIL) 带高压互锁**

P/N	Model NO.	Recommended Wire OD	Dimension "A"	Mating Rcpt Model NO.
AC-HA000925	PL182X-61-6	6.4~7.0mm	φ5.80mm	PL082X-61-6
AC-HA000926	PL182Y-61-6			PL082Y-61-6
AC-HA000927	PL182U-61-6			PL082U-61-6
AC-HA001076	PL182X-61-10	8.3~8.9mm	φ7.40mm	PL082X-61-10
AC-HA001077	PL182Y-61-10			PL082Y-61-10
AC-HA001078	PL182U-61-10			PL082U-61-10

**Standard Part List (Without HVIL) 不带高压互锁**

P/N	Model NO.	Recommended Wire OD	Dimension "A"	Mating Rcpt Model NO.
AC-HA000928	PL182X-60-6	6.4~7.0mm	φ5.80mm	PL082X-60-6
AC-HA000929	PL182Y-60-6			PL082Y-60-6
AC-HA000930	PL182U-60-6			PL082U-60-6
AC-HA001079	PL182X-60-10	8.3~8.9mm	φ7.40mm	PL082X-60-10
AC-HA001080	PL182Y-60-10			PL082Y-60-10
AC-HA001081	PL182U-60-10			PL082U-60-10

**Amphenol Technical Products International Asia.**

第三角投影 THIRD ANGLE PROJECTION	页面 SHEET	幅面 SIZE	版次 REV.	比例 SCALE	PART NAME: PwrLok 4mm 2POS Plug Conn		
2 OF 2	A3	H	UNLESS OTHERWISE SPECIFIED 1) All dimensions are in metric(mm). 2) Tolerances are as follows: 0 PL DEC ±1.00 1 PL DEC ±0.50 2 PL DEC ±0.20 Angles ±1°				
DWG NO: PL182-60		CUST PART #: N/A				CUST REV. -	
签名 SIGNATURE Fred		日期 DATE 08/24/18					
制图 DRAWN		审核 CHECKED		批准 APPROVAL			