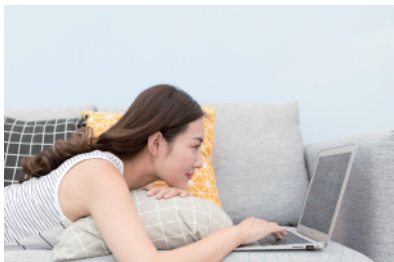


## W311MI Auto-Install

### 150Mbps Auto-Install Wireless Nano USB Adapter

With mini and portable exterior, the 150 Mbps W311MI driver-free adapter fits securely into your computer and has no effect on usage of neighboring ports. It contains an internal driver, which allows automatically installation as soon as it is connected to a computer. Therefore, you do not need to manually install the driver with a CD-ROM or a file downloaded from the internet. It is compatible with many operating systems to address various user requirements for wireless internet connectivity.



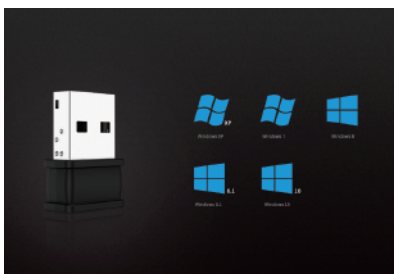
### 1. Auto-Install, Configuration-free

With internal drive, W311MI can automatically complete installation once plugged into your computer, releasing you from troublesome configuration, and installation using CD or drive.



### 2. Mini exterior for portability

With mini and portable exterior, and hard-to-shed design, W311MI is unnoticeable on your computer and has no effect on usage of neighboring ports.



### 3. Compatible with various operating systems

W311MI is compatible with Windows XP, Windows 7, Windows 8, Windows 8.1 and Windows 10 etc., satisfying wireless internet connection demands of desktop computers, notebooks and other devices.

## Specifications

| HARDWARE FEATURES      |  |
|------------------------|--|
| Interface              | USB2.0   |
| Dimensions (W X D X H) | 21mm×15mm×7.7mm(L*W*H)   |
| Antenna Type           | Internal Antenna   |
| WIRELESS FEATURES      |  |
| Wireless Standards     | IEEE 802.11b, IEEE 802.11g, IEEE 802.11n   |
| Frequency              | 2.400~2.4835GHz  |
| Signal Rate            | 11b: Up to 11Mbps(dynamic)<br>11g: Up to 54Mbps(dynamic)<br>11n: Up to 300Mbps(dynamic)                        |
| Transmit Power         | <20dBm (EIRP)  |
| Wireless Modes         | Station Mode   |
| Wireless Security      | 64/128-bit WEP,WPA-PSK / WPA2-PSK,WPA / WPA2   |
| Channel                | 1~13   |
| OTHERS                 |  |
| Package Contents       | Wireless Adapter W311MI , QIG  |
| System Requirements    | windows10 ( 32/64bits),Windows 8.1(32/64bits), Windows 8(32/64bits),Windows 7(32/64bits),Windows XP(32/64bits) |
| Environment            | Operating Temperature: 0°C~40°C (32°F~104°F)   |
|                        | Storage Temperature: -40°C~70°C (-40°F~158°F)  |
|                        | Operating Humidity: 10%~90% non-condensing   |
|                        | Storage Humidity: 5%~90% non-condensing  |
| Certification          | CE/FCC/RoHS  |
| Related Products       | F3、FH456、A9  |

## SHENZHEN TENDA TECHNOLOGY CO.,LTD.

6-8 Floor, Tower E3, No.1001, Zhongshanyuan Road, Nanshan District, Shenzhen, China. 518052

Phone: (86 755)2765 7180 Fax: (86 755)2765 7178

Email: sales@tenda.com.cn support@tenda.com.cn

Website: <http://www.tendacn.com>

©2016 SHENZHEN TENDA TECHNOLOGY CO.,Ltd, the Tenda logo is registered trademark of Shenzhen Tenda Technology Co.,Ltd in China and/or other countries. Other Other brand and product names are trademarks or registered trademarks of their respective holders. Information is subject to change without notice. ALL rights reserved.