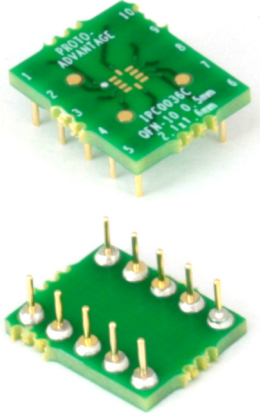


IPC0036C *Proto Advantage*

Datasheet revision 1.0

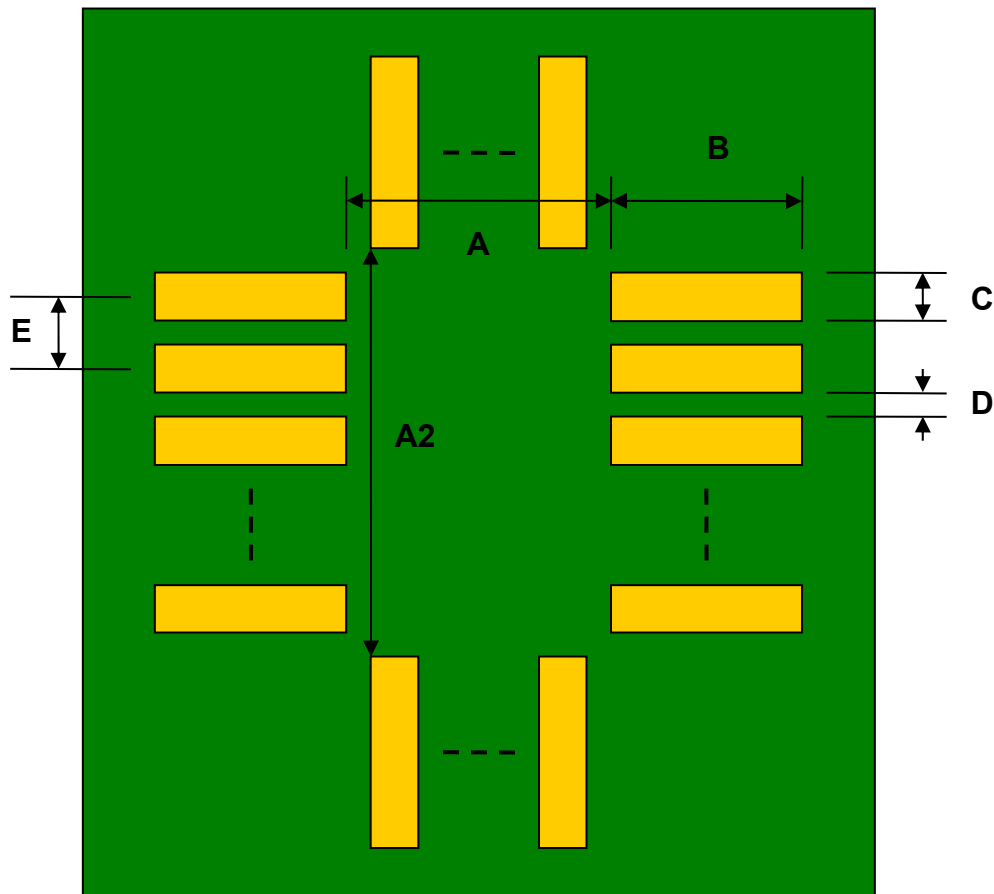
www.Proto-Advantage.com

QFN-10 to DIP-10 SMT Adapter (0.5 mm pitch, 2.1 x 1.6 mm body) *Compact Series*



REF.	DIMENSIONS					
	mm			inches		
	MIN.	TYP.	MAX.	MIN.	TYP.	MAX.
A		0.80				
A2		1.40				
B		0.60				
C		0.25				
D		0.25				
E		0.50				
F					0.300	
G					0.100	
H		0.46				
X					0.400	
Y					0.500	

Top View (SMT Footprint)



(Representative drawing only - not to scale)

Bottom View (DIP Pins)



(Representative drawing only - not to scale)

Side View (DIP Pins)



(Representative drawing only - not to scale)