

## FEATURES

**Passive: no dc bias required**  
**High input IP3: 20 dBm typical**  
**LO to RF isolation: 25 dB typical**  
**LO to IF isolation: 20 dB typical**  
**RF to IF isolation: 15 dB typical**  
**IF frequency range: dc to 4 GHz**  
**Downconverter applications**  
**3 mm × 3 mm, 12-terminal ceramic leadless chip carrier package**

## APPLICATIONS

**Ka band transponders**  
**Point to multipoint radios and very small aperture terminal (VSAT)**  
**Test equipment and sensors**  
**Military end use**

## GENERAL DESCRIPTION

The HMC1048ALC3B is a general-purpose, monolithic microwave integrated circuit (MMIC), double balanced mixer that can be used as a downconverter with dc to 4 GHz at the intermediate frequency (IF) port and 2.25 GHz to 18 GHz at the radio frequency (RF) port. The mixer requires no external components or matching circuitry.

## FUNCTIONAL BLOCK DIAGRAM

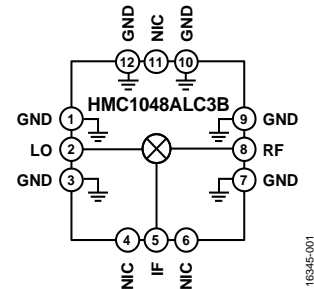


Figure 1.

163345-001

The HMC1048ALC3B provides excellent local oscillator (LO) to RF, LO to IF, and RF to IF isolation. The mixer operates with LO drive levels from 9 dBm to 17 dBm. The HMC1048ALC3B eliminates the need for wire bonding and allows the use of surface-mount manufacturing techniques.

**TABLE OF CONTENTS**

|   |   |  |    |
|---|---|--|----|
| Features .....                          | 1 | Pin Configuration and Function Descriptions..... | 5  |
| Applications.....                       | 1 | Interface Schematics .....                       | 5  |
| Functional Block Diagram .....          | 1 | Typical Performance Characteristics .....        | 6  |
| General Description .....               | 1 | Downconverter Performance .....                  | 6  |
| Revision History .....                  | 2 | Isolation and Return Loss .....                  | 10 |
| Specifications.....                     | 3 | Spurious and Harmonics Performance .....         | 11 |
| 2.25 GHz to 12 GHz Frequency Range..... | 3 | Theory of Operation .....                        | 12 |
| 12 GHz to 18 GHz Frequency Range.....   | 3 | Applications Information .....                   | 13 |
| Absolute Maximum Ratings.....           | 4 | Evaluation Board .....                           | 13 |
| Thermal Resistance .....                | 4 | Outline Dimensions .....                         | 15 |
| Solder Profile.....                     | 4 | Ordering Guide .....                             | 15 |
| ESD Caution.....                        | 4 |  |    |

**REVISION HISTORY**

**5/2019—Rev. A to Rev. B**

|                         |   |
|-------------------------|---|
| Change to Table 5 ..... | 5 |
|-------------------------|---|

**7/2018—Rev. 0 to Rev. A**

|   |    |
|---|----|
| Changes to Figure 8 and Figure 9.....                       | 6  |
| Changes to Figure 13, Figure 14, and Figure 15 .....        | 7  |
| Changes to Figure 17, Figure 18, and Figure 20 .....        | 8  |
| Changes to Figure 26 Caption, Figure 27, and Figure 28..... | 10 |

**2/2018—Revision 0: Initial Version**

## SPECIFICATIONS

### 2.25 GHz TO 12 GHz FREQUENCY RANGE

The measurements are performed in downconverter mode at  $T_A = 25^\circ\text{C}$ , IF frequency ( $f_{IF}$ ) = 100 MHz, RF signal power = -10 dBm, LO power ( $P_{LO}$ ) = 13 dBm, and lower sideband with a 50  $\Omega$  system, unless otherwise noted.

Table 1.

| Parameter                    | Symbol   | Min  | Typ | Max | Unit |
|------------------------------|----------|------|-----|-----|------|
| FREQUENCY RANGE              |          |      |     |     |      |
| RF Frequency                 | $f_{RF}$ | 2.25 |     | 12  | GHz  |
| IF Frequency                 | $f_{IF}$ | DC   |     | 4   | GHz  |
| LO Frequency                 | $f_{LO}$ | 2.25 |     | 12  | GHz  |
| LO DRIVE LEVEL               |          |      |     |     |      |
|                              |          | 9    | 13  | 17  | dBm  |
| RF PERFORMANCE               |          |      |     |     |      |
| Downconverter                |          |      |     |     |      |
| Conversion Loss              |          |      | 10  | 14  | dB   |
| Single Sideband Noise Figure | SSB NF   |      | 10  |     | dB   |
| Input Third-Order Intercept  | IP3      |      | 20  |     | dBm  |
| Input 1 dB Compression Point | P1dB     |      | 10  |     | dB   |
| ISOLATION                    |          |      |     |     |      |
| RF to IF                     |          | 8    | 15  |     | dB   |
| LO to RF                     |          | 18   | 25  |     | dB   |
| LO to IF                     |          | 15   | 20  |     | dB   |

### 12 GHz TO 18 GHz FREQUENCY RANGE

The measurements are performed in downconverter mode at  $T_A = 25^\circ\text{C}$ ,  $f_{IF} = 100$  MHz, RF signal power = -10 dBm,  $P_{LO} = 13$  dBm, and lower sideband with a 50  $\Omega$  system, unless otherwise noted.

Table 2.

| Parameter                    | Symbol   | Min | Typ | Max | Unit |
|------------------------------|----------|-----|-----|-----|------|
| FREQUENCY RANGE              |          |     |     |     |      |
| RF Frequency                 | $f_{RF}$ | 12  |     | 18  | GHz  |
| IF Frequency                 | $f_{IF}$ | DC  |     | 4   | GHz  |
| LO Frequency                 | $f_{LO}$ | 12  |     | 18  | GHz  |
| LO DRIVE LEVEL               |          |     |     |     |      |
|                              |          | 9   | 13  | 17  | dBm  |
| RF PERFORMANCE               |          |     |     |     |      |
| Downconverter                |          |     |     |     |      |
| Conversion Loss              |          |     | 10  | 14  | dB   |
| Single Sideband Noise Figure | SSB NF   |     | 10  |     | dB   |
| Input Third-Order Intercept  | IP3      |     | 20  |     | dBm  |
| Input 1 dB Compression Point | P1dB     |     | 11  |     | dB   |
| ISOLATION                    |          |     |     |     |      |
| RF to IF                     |          | 6   | 20  |     | dB   |
| LO to RF                     |          | 25  | 30  |     | dB   |
| LO to IF                     |          | 25  | 30  |     | dB   |

## ABSOLUTE MAXIMUM RATINGS

Table 3.

| Parameter   | Rating             |
|---|--------------------|
| RF Input Power when LO = 18 dBm   | 16 dBm             |
| LO Input Power  | 20 dBm             |
| IF Input Power when LO = 18 dBm   | 16 dBm             |
| IF Port Maximum Sink and Source Current   | 6 mA               |
| Maximum Junction Temperature  | 175°C              |
| Continuous Power Dissipation, P <sub>DISS</sub><br>(T <sub>A</sub> = 85°C, Derate 2.6 mW/°C Above 85°C) | 235 mW             |
| Operating Temperature Range   | -40°C to +85°C     |
| Storage Temperature Range   | -65°C to +150°C    |
| Lead Temperature Range  | -65°C to +150°C    |
| Reflow Temperature  | 260°C              |
| Electrostatic Discharge (ESD) Sensitivity   |                    |
| Human Body Model (HBM)  | Class 1B (750 V)   |
| Field Induced Charge Device Model (FICDM)   | Class C3 (1.25 kV) |

Stresses at or above those listed under Absolute Maximum Ratings may cause permanent damage to the product. This is a stress rating only; functional operation of the product at these or any other conditions above those indicated in the operational section of this specification is not implied. Operation beyond the maximum operating conditions for extended periods may affect product reliability.

## THERMAL RESISTANCE

Thermal performance is directly linked to printed circuit board (PCB) design and operating environment. Careful attention to PCB thermal design is required.

$\theta_{JA}$  is the natural convection junction to ambient thermal resistance measured in a one-cubic foot sealed enclosure, and  $\theta_{JC}$  is the junction to case thermal resistance.

Table 4. Thermal Resistance

| Package Type        | $\theta_{JA}$ | $\theta_{JC}$ | Unit |
|---------------------|---------------|---------------|------|
| E-12-4 <sup>1</sup> | 120           | 383           | °C/W |

<sup>1</sup> See JEDEC standard JESD51-2 for additional information on optimizing the thermal impedance.

## SOLDER PROFILE

The typical Pb-free reflow solder profile shown in Figure 2 is based on JEDEC J-STD-20C.

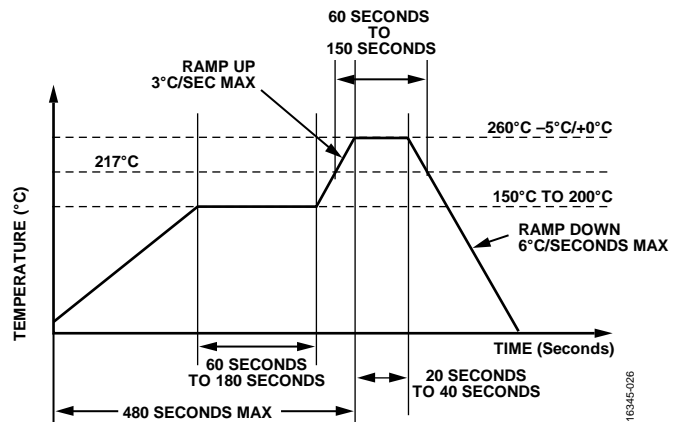


Figure 2. Pb-Free Reflow Solder Profile

## ESD CAUTION



**ESD (electrostatic discharge) sensitive device.** Charged devices and circuit boards can discharge without detection. Although this product features patented or proprietary protection circuitry, damage may occur on devices subjected to high energy ESD. Therefore, proper ESD precautions should be taken to avoid performance degradation or loss of functionality.

# PIN CONFIGURATION AND FUNCTION DESCRIPTIONS



**NOTES**  
 1. NIC = NOT INTERNALLY CONNECTED. THESE PINS CAN BE CONNECTED TO RF AND DC GROUND. PERFORMANCE IS NOT AFFECTED.  
 2. EXPOSED PAD MUST BE CONNECTED TO THE RF AND DC GROUND OF THE PCB.

Figure 3. Pin Configuration

Table 5. Pin Function Descriptions

| Pin No.            | Mnemonic | Description  |
|--------------------|----------|--|
| 1, 3, 7, 9, 10, 12 | GND      | Ground. These pins must be connected to RF and dc ground of the PCB. See Figure 4 for the interface schematic.   |
| 2                  | LO       | Local Oscillator Port. This pin is ac-coupled and matched to 50 Ω. See Figure 5 for the interface schematic.   |
| 4, 6, 11           | NIC      | Not Internally Connected. These pins can be connected to RF and dc ground. Performance is not affected.  |
| 5                  | IF       | Intermediate Frequency Port. For applications not requiring operation to dc, dc block this port externally using a series capacitor of a value chosen to pass the necessary IF frequency range. For operation to dc, IF must not source or sink more than 6 mA of current. Otherwise, die malfunction and possible die failure can result. See Figure 6 for the interface schematic. |
| 8                  | RF       | Radio Frequency Port. This pin is ac-coupled and matched to 50 Ω. See Figure 7 for the interface schematic.  |
|                    | EPAD     | Exposed Pad. Exposed pad must be connected to the RF and dc ground of the PCB.   |

## INTERFACE SCHEMATICS



Figure 4. GND Interface Schematic

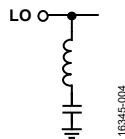


Figure 5. LO Interface Schematic

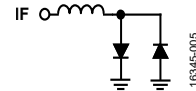


Figure 6. IF Interface Schematic

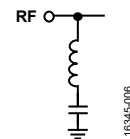


Figure 7. RF Interface Schematic

# TYPICAL PERFORMANCE CHARACTERISTICS

## DOWNCONVERTER PERFORMANCE

*IF = 100 MHz, Lower Sideband (High-Side LO)*

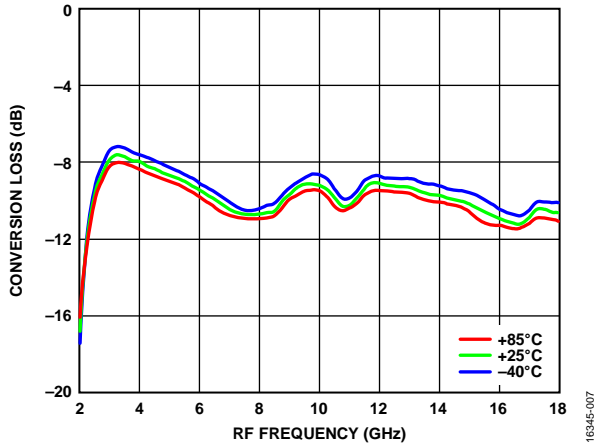


Figure 8. Conversion Loss vs. RF Frequency over Temperature at  $f_{IF} = 100$  MHz,  $P_{LO} = 13$  dBm

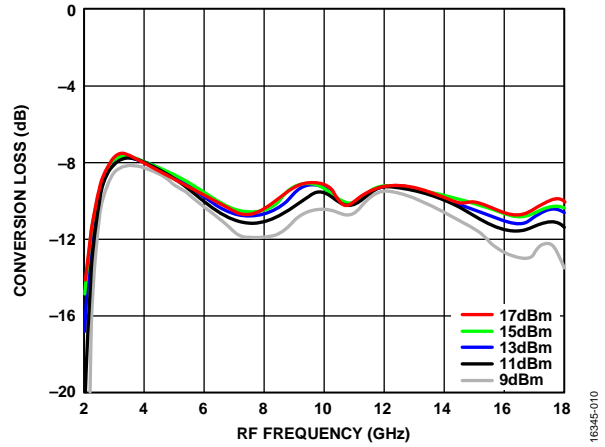


Figure 11. Conversion Loss vs. RF Frequency over LO Drive at  $f_{IF} = 100$  MHz,  $T_A = 25^\circ\text{C}$

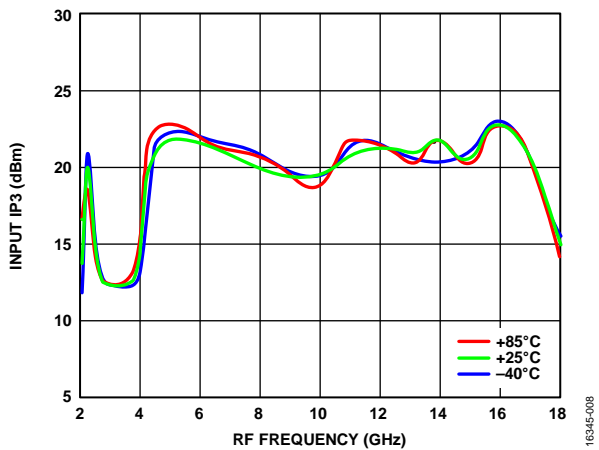


Figure 9. Input IP3 vs. RF Frequency over Temperature at  $f_{IF} = 100$  MHz,  $P_{LO} = 13$  dBm

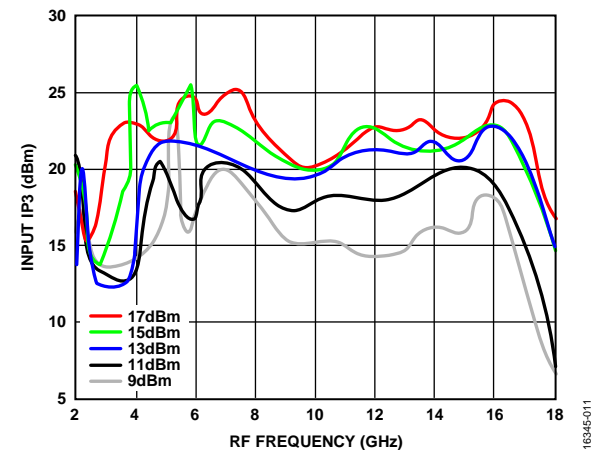


Figure 12. Input IP3 vs. RF Frequency over LO Drive at  $f_{IF} = 100$  MHz,  $T_A = 25^\circ\text{C}$



Figure 10. Input P1dB vs. RF Frequency over Temperature at  $f_{IF} = 100$  MHz,  $P_{LO} = 13$  dBm

**IF = 500 MHz, Lower Sideband (High-Side LO)**

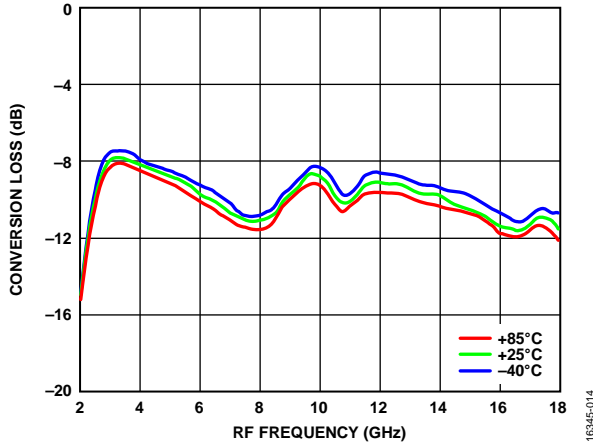


Figure 13. Conversion Loss vs. RF Frequency over Temperature at  $f_{IF} = 500$  MHz,  $P_{LO} = 13$  dBm

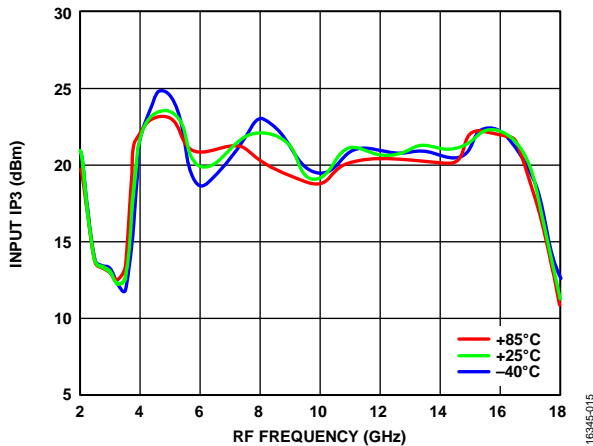


Figure 14. Input IP3 vs. RF Frequency over Temperature at  $f_{IF} = 500$  MHz,  $P_{LO} = 13$  dBm

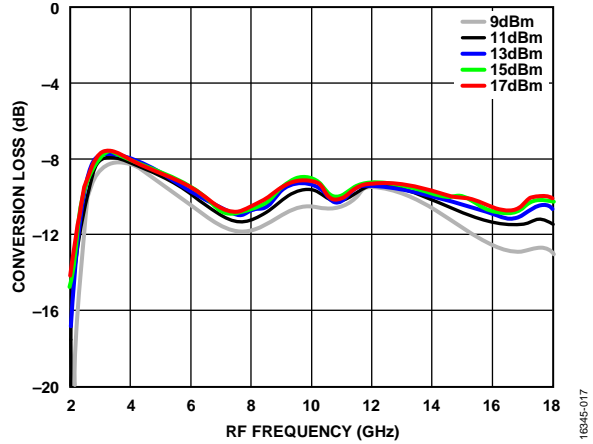


Figure 15. Conversion Loss vs. RF Frequency over LO Drive at  $f_{IF} = 500$  MHz,  $T_A = 25^\circ\text{C}$

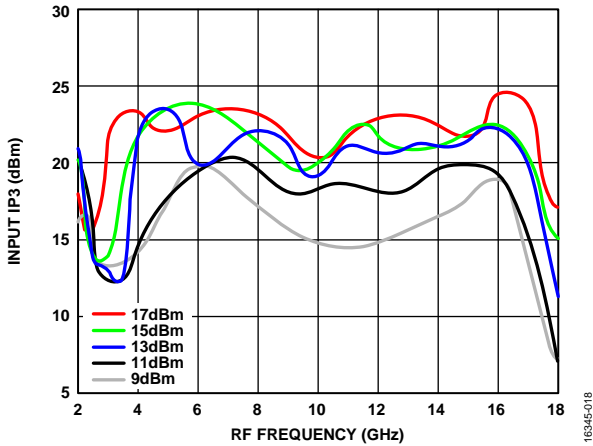


Figure 16. Input IP3 vs. RF Frequency over LO Drive at  $f_{IF} = 500$  MHz,  $T_A = 25^\circ\text{C}$

**IF = 1500 MHz, Lower Sideband (High-Side LO)**

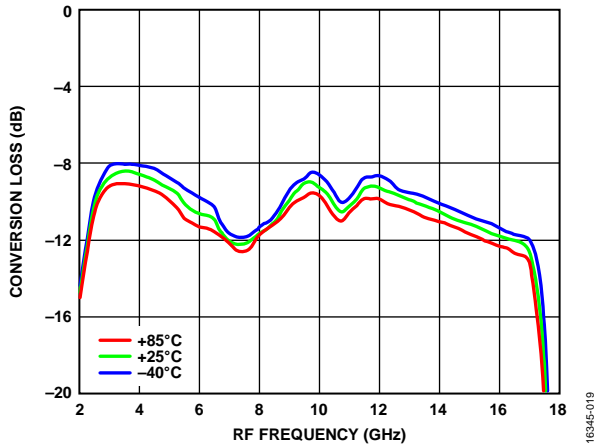


Figure 17. Conversion Loss vs. RF Frequency over Temperature at  $f_{IF} = 1500$  MHz,  $P_{LO} = 13$  dBm

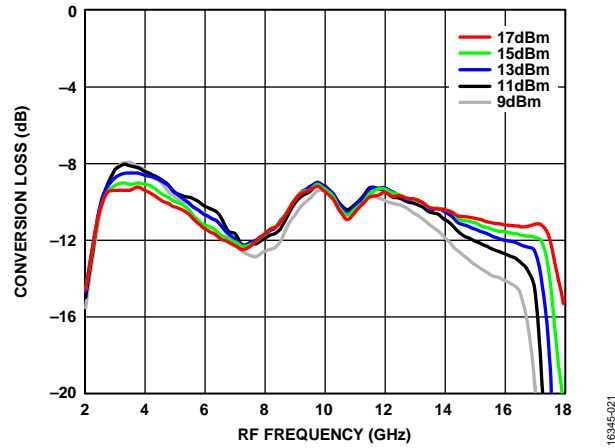


Figure 20. Conversion Loss vs. RF Frequency over LO Drive at  $f_{IF} = 1500$  MHz,  $T_A = 25^\circ\text{C}$



Figure 18. Input IP3 vs. RF Frequency over Temperature at  $f_{IF} = 1500$  MHz,  $P_{LO} = 13$  dBm

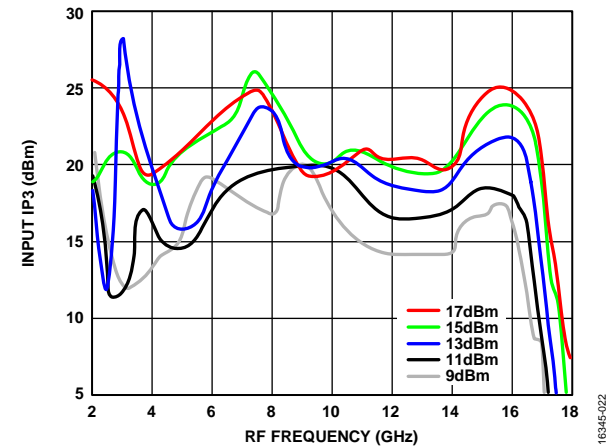


Figure 21. Input IP3 vs. RF Frequency over LO Drive at  $f_{IF} = 1500$  MHz,  $T_A = 25^\circ\text{C}$

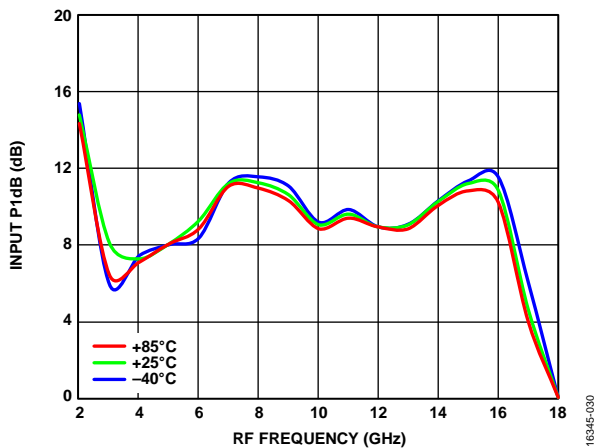


Figure 19. Input P1dB vs. RF Frequency over Temperature at  $f_{IF} = 1500$  MHz,  $P_{LO} = 13$  dBm



**IF Bandwidth**

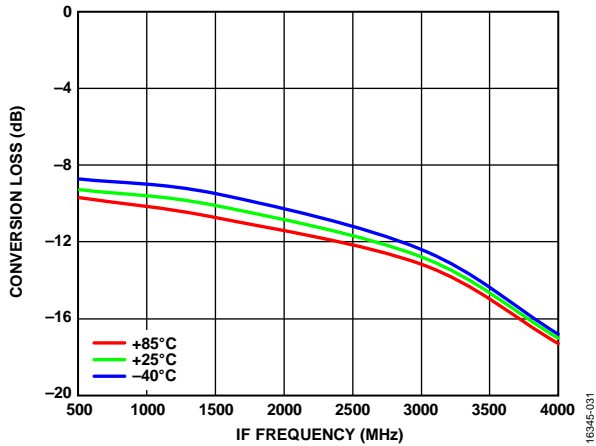


Figure 22. Conversion Loss vs. IF Frequency over Temperature at  $f_{LO} = 12\text{ GHz}$ ,  $P_{LO} = 13\text{ dBm}$

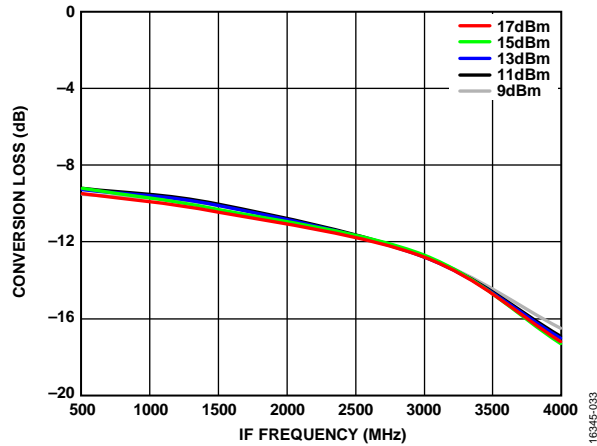


Figure 24. Conversion Loss vs. IF Frequency over LO Drive at  $f_{LO} = 12\text{ GHz}$ ,  $T_A = 25^\circ\text{C}$

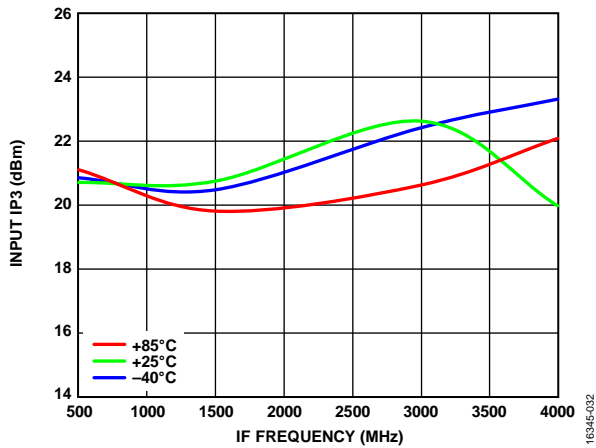


Figure 23. Input IP3 vs. IF Frequency over Temperature at  $f_{LO} = 12\text{ GHz}$ ,  $P_{LO} = 13\text{ dBm}$

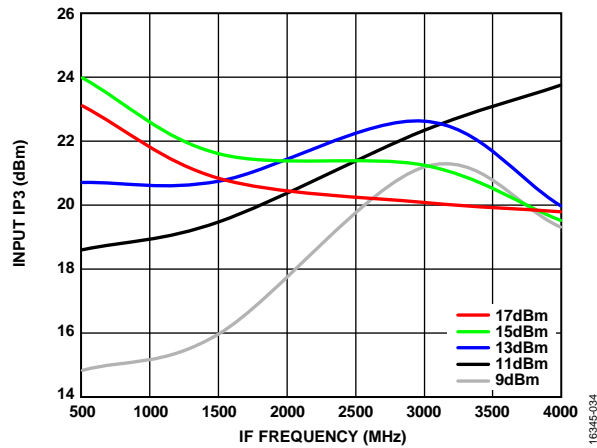


Figure 25. Input IP3 vs. IF Frequency over LO Drive at  $f_{LO} = 12\text{ GHz}$ ,  $T_A = 25^\circ\text{C}$

ISOLATION AND RETURN LOSS



Figure 26. Isolation vs. Frequency,  $T_A = 25^\circ\text{C}$



Figure 28. LO Return Loss vs. LO Frequency over Temperature at  $P_{LO} = 13\text{ dBm}$

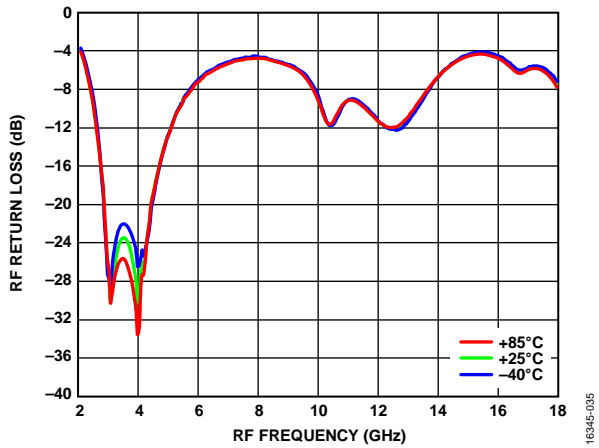


Figure 27. RF Return Loss vs. RF Frequency over Temperature at  $f_{LO} = 5.5\text{ GHz}$ ,  $P_{LO} = 13\text{ dBm}$

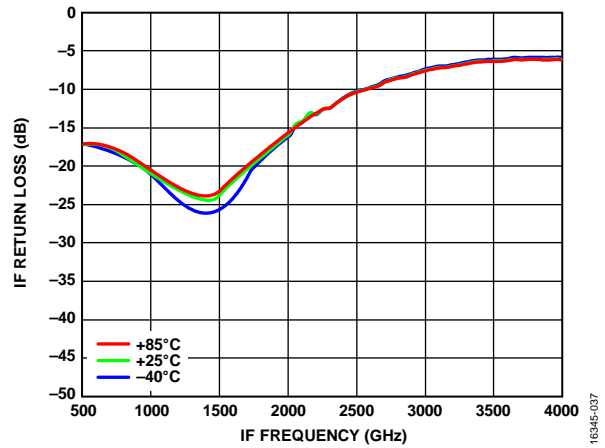


Figure 29. IF Return Loss vs. IF Frequency over Temperature at  $f_{LO} = 5.5\text{ GHz}$ ,  $P_{LO} = 13\text{ dBm}$

**SPURIOUS AND HARMONICS PERFORMANCE*****M × N Spurious Outputs as Downconverter***

When measuring these parameters, -10 dBm RF input power at 4 GHz and 13 dBm LO input power at 4.1 GHz were applied. All values in dBc below the IF output power level and valid for lower sideband measurements. N/A means not applicable.

Spur values are  $(M \times RF) - (N \times LO)$ .

|        |   | N × LO |    |    |    |    |
|--------|---|--------|----|----|----|----|
|        |   | 0      | 1  | 2  | 3  | 4  |
| M × RF | 0 | N/A    | 31 | 19 | 27 | 4  |
|        | 1 | 4      | 0  | 27 | 35 | 39 |
|        | 2 | 52     | 34 | 40 | 34 | 59 |
|        | 3 | 74     | 68 | 57 | 55 | 59 |
|        | 4 | 77     | 78 | 77 | 62 | 67 |

***LO Harmonics***

When measuring these parameters, 13 dBm LO input power was applied at various LO frequencies. All values in dBc below LO power level are measured at RF port. N/A means not applicable.

**Table 6. LO Harmonics**

| LO Frequency (GHz) | N × LO Spur at RF Port |    |    |     |
|--------------------|------------------------|----|----|-----|
|                    | 1                      | 2  | 3  | 4   |
| 2                  | 58                     | 62 | 57 | 62  |
| 4                  | 34                     | 31 | 46 | 40  |
| 6                  | 35                     | 30 | 47 | 63  |
| 10                 | 27                     | 27 | 39 | 66  |
| 12                 | 47                     | 42 | 40 | 65  |
| 14                 | 32                     | 55 | 39 | N/A |

## **THEORY OF OPERATION**

The HMC1048ALC3B is a general-purpose, double balanced mixer that can be used as a downconverter from 2.25 GHz to 18 GHz.

The HMC1048ALC3B downconverts radio frequencies between 2.25 GHz and 18 GHz to intermediate frequencies between dc and 4 GHz.

# APPLICATIONS INFORMATION

## EVALUATION BOARD

Figure 30 and Figure 31 show the top and cross sectional views of the EV1HMC1048ALC3B evaluation board, which uses 4-layer construction with a copper thickness of 0.5 oz (0.7 mil) and dielectric materials between each copper layer.

All RF traces are routed on Layer 1, and all other remaining layers are grounded planes that provide a solid ground for RF transmission lines. The top dielectric material is Rogers 4350, offering low loss performance. The prepreg material in the middle is used to attach the core layers together, the RoHS compliant Isola 370HR and the Rogers 4350 layers, with copper traces above and below the prerreg material. Both the prepreg and the Isola 370HR core layer are used to achieve the required board finish thickness.

The RF transmission lines were designed using a coplanar waveguide (CPWG) model with a width of 18 mil and ground spacing of 13 mil for a characteristic impedance of 50 Ω. For optimal RF and thermal grounding, as many plated through vias as possible are arranged around the transmission lines and under the exposed pad of the package.

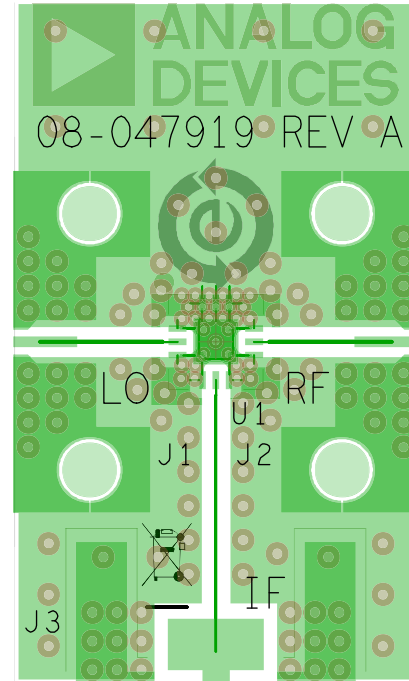


Figure 30. EV1HMC1048ALC3B Evaluation Board Layout Top View

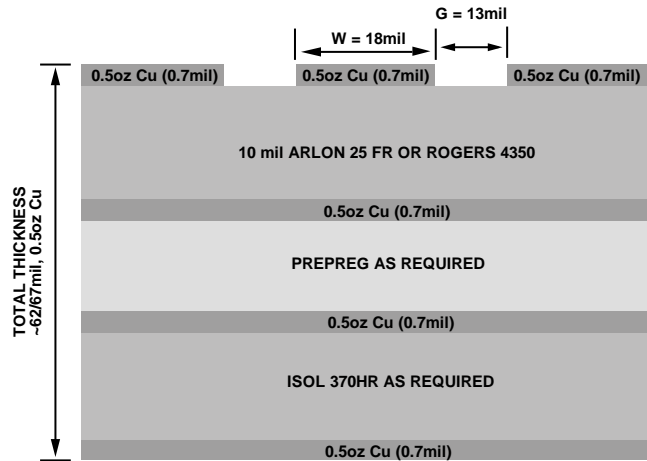


Figure 31. EV1HMC1048ALC3B Evaluation Board Cross Sectional View

Figure 32 shows the [EV1HMC1048ALC3B](#) evaluation board with component placement. Because the HMC1048ALC3B is a passive device, there is no requirement for external components. The LO and RF pins are internally ac-coupled. The IF pin is internally dc-coupled. Use an external series capacitor when IF operation is not required. Choose a value that stays within the necessary IF frequency range (dc to 4 GHz). When IF operation to dc is required, do not exceed the IF source and sink current rating, as specified in the Absolute Maximum Ratings section. The evaluation board shown in Figure 32 is available for order from the Analog Devices, Inc., website at [www.analog.com/EVAL-HMC1048A](http://www.analog.com/EVAL-HMC1048A).



Figure 32. [EV1HMC1048ALC3B](#) Evaluation Board

Table 7 and Figure 33 show the evaluation board schematic and bill of materials, respectively.

**Table 7. Bill of Materials for the [EV1HMC1048ALC3B](#) Evaluation Board**

| Item             | Description                            |
|------------------|--|
| J1 to J2         | 2.92 mm connectors                     |
| J3               | Subminiature Version A (SMA) connector |
| U1               | HMC1048ALC3B                           |
| PCB <sup>1</sup> | 08-047919 Evaluation PCB               |

<sup>1</sup> 08-047919 is the raw bare PCB identifier. Reference the [EV1HMC1048ALC3B](#) part number when ordering the complete evaluation PCB.



Figure 33. [EV1HMC1048ALC3B](#) Evaluation Board Schematic

# OUTLINE DIMENSIONS

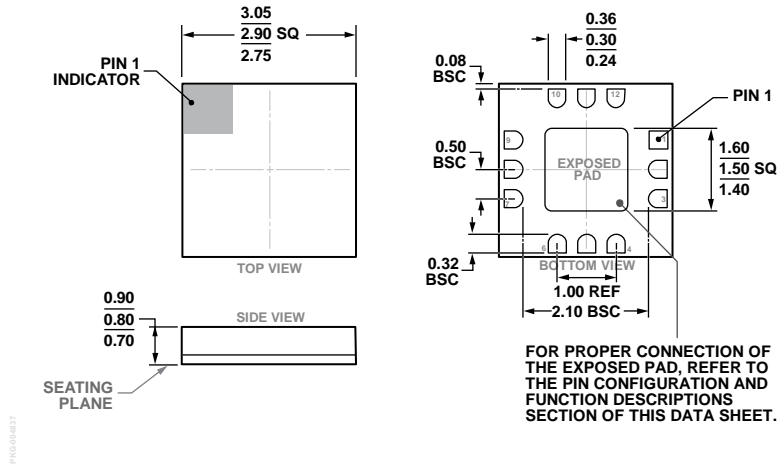


Figure 34. 12-Terminal Ceramic Leadless Chip Carrier [LCC] (E-12-4)  
Dimensions shown in millimeters

## ORDERING GUIDE

| Model <sup>1</sup> | Temperature Range | Moisture Sensitivity Level (MSL) Rating <sup>2</sup> | Package Description     | Package Option |
|--------------------|-------------------|--|-------------------------|----------------|
| HMC1048ALC3B       | -40°C to +85°C    | MSL3   | 12-Terminal Ceramic LCC | E-12-4         |
| HMC1048ALC3BTR     | -40°C to +85°C    | MSL3   | 12-Terminal Ceramic LCC | E-12-4         |
| HMC1048ALC3BTR-R5  | -40°C to +85°C    | MSL3   | 12-Terminal Ceramic LCC | E-12-4         |
| EV1HMC1048ALC3B    |                   |  |                         |                |

<sup>1</sup> All models are RoHS compliant parts.

<sup>2</sup> See the Absolute Maximum Ratings section, Table 3, and Figure 2 for the peak reflow temperature.