

# Dip Switches "End to End Stackable" Through Hole and Surface Mount **GD Series**



## FEATURES:

- Conventional gold wiping contact system
- Available in PC and surface mount configurations
- Traditional tape seal standard
- 95% Minimum solder coverage (90/10 tin lead)
- Withstands wave soldering temperature of 245°C for 3-5 seconds
- Heat deflection temperature of 260°C for surface mount compatibility
- End stackable (GDS version)
- Auto-insertable (GDS and GDB version)
- Vacuum pick and place compatible (GDS, GDB and GDH)
- Half pitch .050" terminal spacing (GDH version)
- Available in optional tape & reel packaging

## ENVIRONMENTAL SPECIFICATIONS:

Operating Temperature -30°C to +85°C  
 Storage Temperature -45°C to +100°C  
 Solder Heat Resistance See page M6-7

## MATERIAL SPECIFICATIONS:

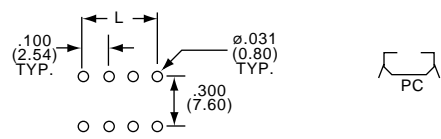
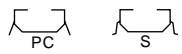
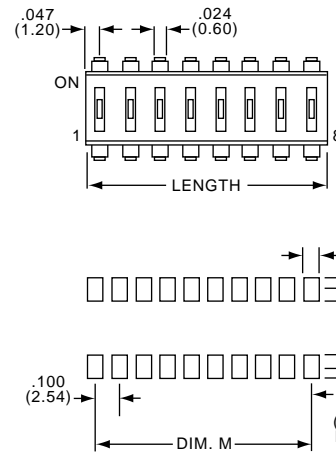
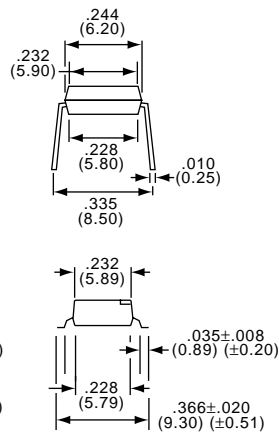
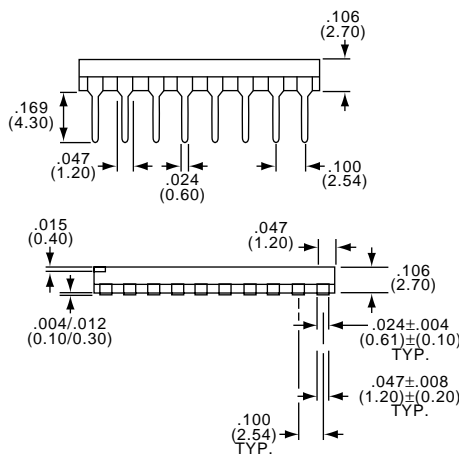
Moving Contact Gold over nickel over copper alloy  
 Fixed Contact Gold over copper alloy  
 Base Material PPS UL94V-0  
 Cover Material PPS UL94V-0  
 Actuator Material High temperature polyester/polyamide  
 Terminal Tin lead plated over nickel over copper alloy

## TYPICAL PERFORMANCE CHARACTERISTICS:

Contact Rating 0.4 VA 25ma @ 24 VDC  
 Initial Contact Resistance 100 Milliohms max.  
 Insulation Resistance 100 Megohms min. @ 250 VDC  
 Dielectric Strength 300 VAC  
 Life Expectancy 1,000 Cycles  
 Operating Force 60-600 Grams

*End to End Stackable!*

## GDS Low Profile Slide Actuator



PC Model	S Model	Poles	Length	Dim. M
GDS02	GDS02S	2	.194(4.94)	.100 (2.54)
GDS04	GDS04S	4	.394(10.02)	.300(7.62)
GDS06	GDS06S	6	.594(15.10)	.500(12.7)
GDS08	GDS08S	8	.794(20.18)	.700(17.78)
GDS10	GDS10S	10	.994(25.26)	.900(22.86)

See pages M2-M4 for application specific indexing.

**Need more technical information?**  
 Consult your Thomas & Betts  
 sales office listed on the back cover

# GD Series *Dip Switches "Piano and Rocker" Actuator*

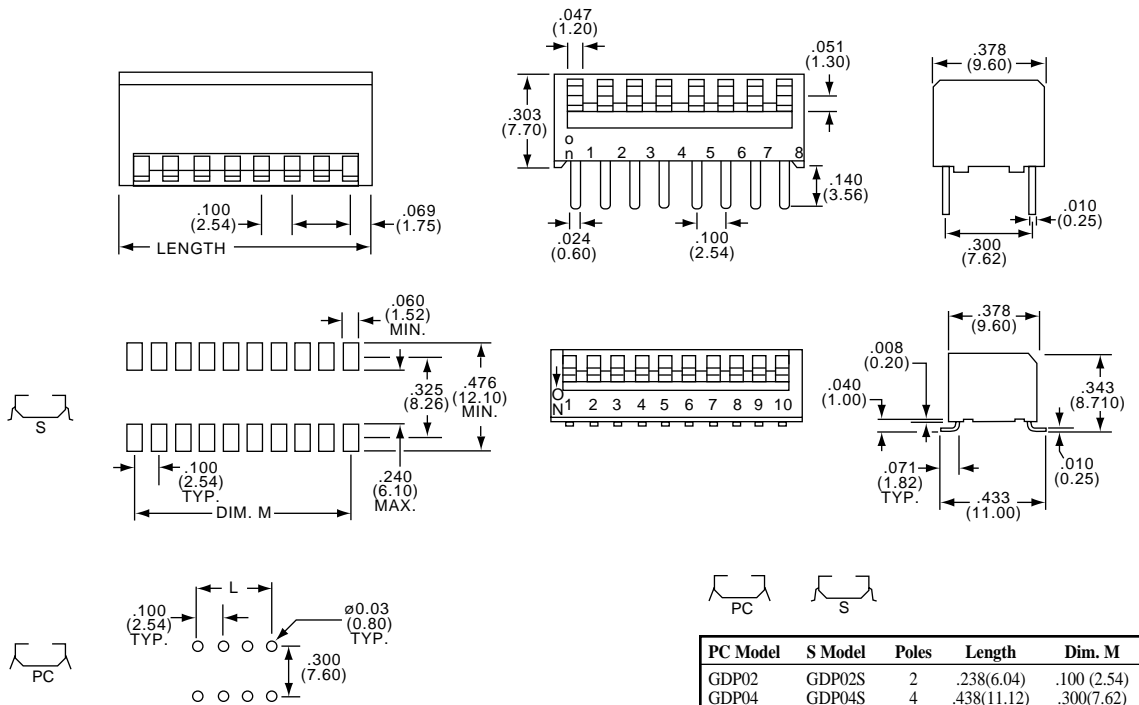
## *Through hole and Surface Mount*

**A**

**GDP**  
Classic Profile Piano Actuator

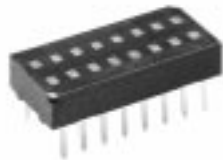


GDP08

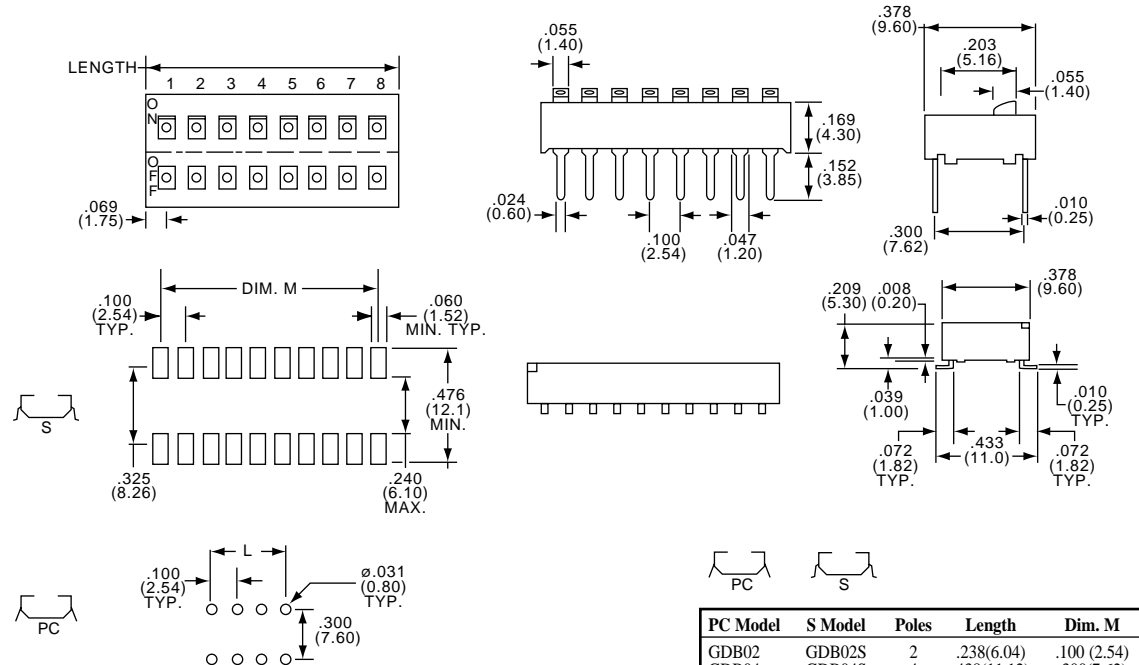


PC Model	S Model	Poles	Length	Dim. M
GDP02	GDP02S	2	.238(6.04)	.100 (2.54)
GDP04	GDP04S	4	.438(11.12)	.300(7.62)
GDP06	GDP06S	6	.638(16.20)	.500(12.7)
GDP08	GDP08S	8	.838(22.28)	.700(17.78)
GDP10	GDP10S	10	1.038(26.36)	.900(22.86)

**GDB**  
Flush Rocker Actuator



GDB08



PC Model	S Model	Poles	Length	Dim. M
GDB02	GDB02S	2	.238(6.04)	.100 (2.54)
GDB04	GDB04S	4	.438(11.12)	.300(7.62)
GDB06	GDB06S	6	.638(16.20)	.500(12.7)
GDB08	GDB08S	8	.838(21.28)	.700(17.78)
GDB10	GDB10S	10	1.038(26.36)	.900(22.86)

# Dip Switches "Recessed Rocker" Surface Mount "Half Pitch" .050" Low Profile

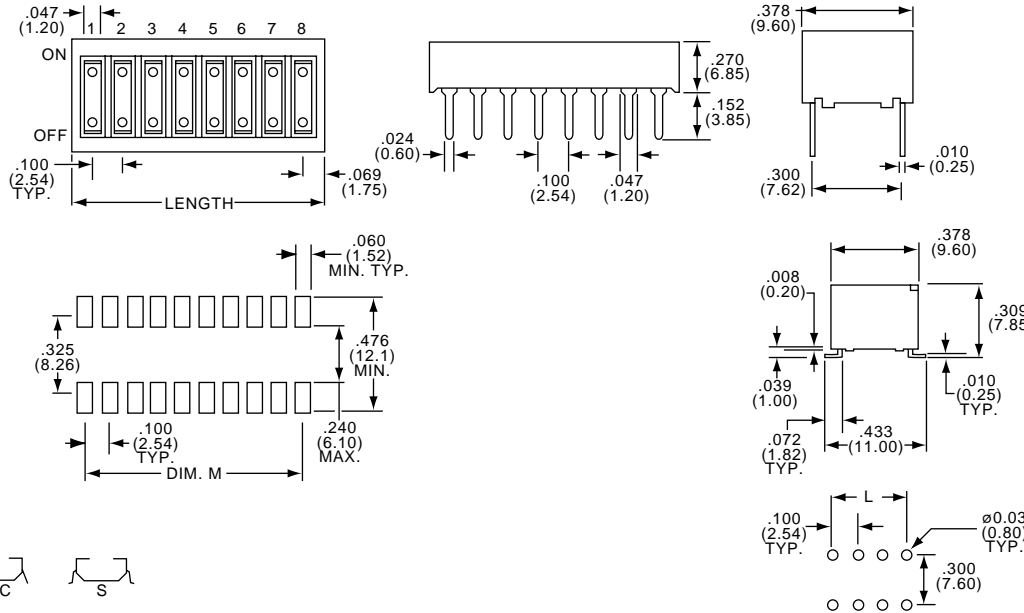
# GD Series



**GDR**  
Classic Profile  
Recessed Rocker Actuator



GDR08

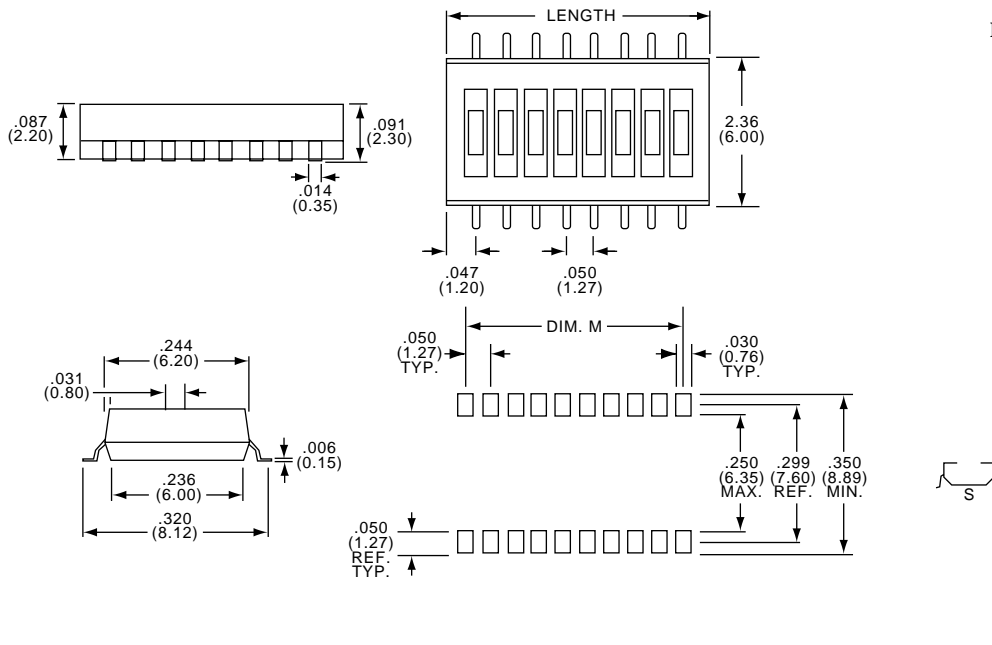


PC Model	S Model	Poles	Length	Dim. M
GDR02	GDR02S	2	.238(6.04)	.100(2.54)
GDR04	GDR04S	4	.438(11.12)	.300(7.62)
GDR06	GDR06S	6	.638(16.20)	.500(12.70)
GDR08	GDR08S	8	.838(21.28)	.700(17.78)
GDR10	GDR10S	10	1.038(26.36)	.900(22.86)

**GDH**  
Half Pitch .050" Terminal Spacing



GDH08S



S Model	Poles	Length	Dim. M
GDH02S	2	.144(3.66)	.050(1.27)
GDH04S	4	.244(6.20)	.150(3.81)
GDH06S	6	.344(8.75)	.250(6.35)
GDH08S	8	.444(11.29)	.350(8.89)
GDH10S	10	.544(13.82)	.450(11.43)

**Need more technical information?**

Consult your Thomas & Betts  
sales office listed on the back cover