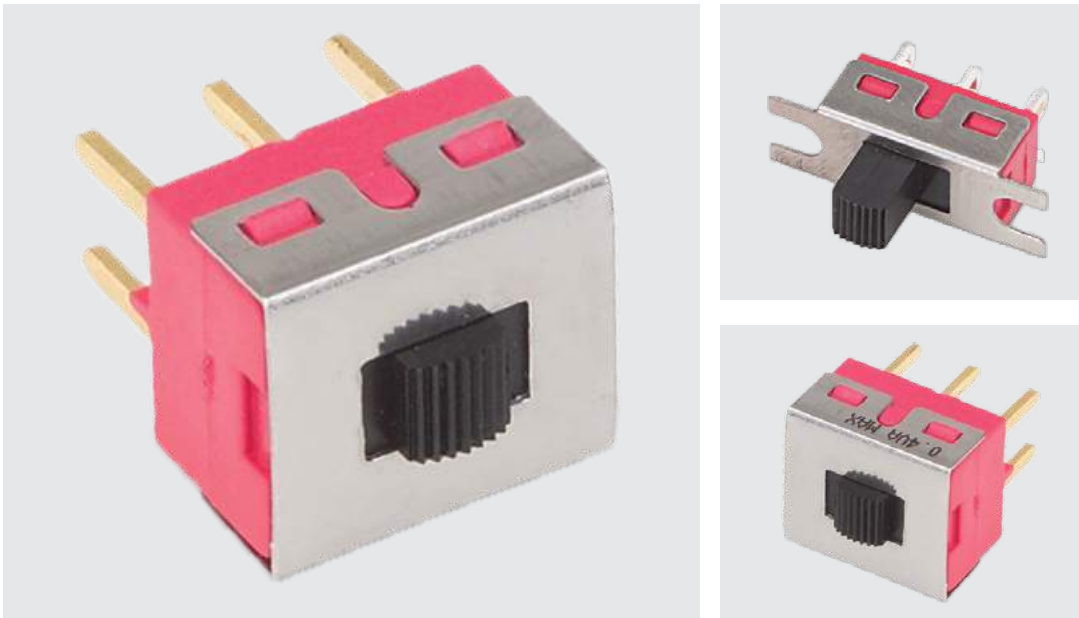


4M-SERIES

4M-Series

MINIATURE SLIDE SWITCHES

The 4M-Series miniature slide switches offer a variety of ratings, circuits, contact materials, and terminal platings. With 14 termination choices and 8 actuator styles, this versatile switch adapts to a variety of applications, and is able to withstand temperatures from -30°C to +85°C.



Product Highlights:

- Two or Three Position Circuitry
- 125/250VAC or up to 28VDC
- Available in Silver, Gold or Tin Plating
- Supplied in Bulk or Tape Reel
- UL and CSA Approvals Available

Typical Applications:

- Consumer Electronics
- Instrumentation
- Computer Servers / Peripherals
- Test / Measurement

Resources:

[Download 3D CAD Files](#)

[IGS >](#) [STP >](#)



Carling Technologies, Inc.
60 Johnson Avenue, Plainville, CT 06062
Email: sales@carlingtech.com
Application Support: team2@carlingtech.com
Phone: 860.793.9281 Fax: 860.793.9231

www.carlingtech.com

Electrical

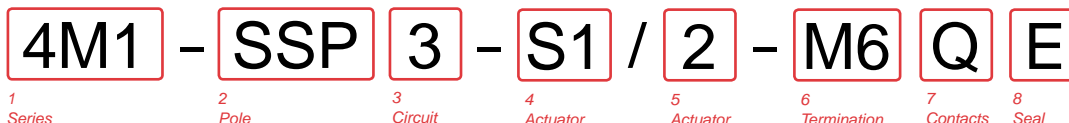
Contact Rating refer to ordering scheme
 Electrical Life 30,000 make & break cycles @ full load
 Contact Resistance 10 mΩ max. initial @ 2-4 VDC 100mA for both silver & gold plated contacts
 Insulation Resistance 1000 MΩ min.
 Dielectric Strength 1500 Volts RMS @ sea level

Physical

Operating Temperature -30°C to +85°C
 Solder Heat Resistance MIL-STD-202, Method 210

Material

Case Dially phthalate (DAP) (UL 94V-0)
 Slide Handle Nylon
 Housing Stainless Steel
 Terminal Seal Epoxy



1 SERIES
4M1 Miniature Slide Switch

2 POLES
SSP Single Pole **SDP** Double Pole

3 CIRCUIT
 () - momentary
Switching Position:

1	2-1, 5-4	2	Connected Terminals	3	2-3, 5,6
1	ON	NONE	ON	ON	
3	ON	OFF	ON	ON	

4 ACTUATOR

S1	.201" height	S5	.053" height (for DPDT only)
S2	.301" height	S6	.488" height
S3	.370" height	S7	.311" height
S4	.140" height	T1	.209" height (for DPDT only)

5 ACTUATOR COLORS

1	White	6	Green
2	Black	7	Blue
3	Red	8	Brown
4	Orange	9	Gray
5	Yellow		

6 TERMINATION

M1	Solder Lug	M61	Snap-In, 90°
M2	PCB	M7	PC Mount, 90° vertical
M3	Quick Connect	M71	Snap-In, 90°
M5-1	Wire Wrap .750	VS2	PC Mount, U bracket, .350 height
M5-2	Wire Wrap .964	VS3	PC Mount, U bracket, .575 height
M5-3	Wire Wrap .425	N1	Solder Lug without mounting tabs
M5-4	Wire Wrap 1.062		
M6	PC Mount, 90° horizontal		

7 CONTACTS / TERMINALS

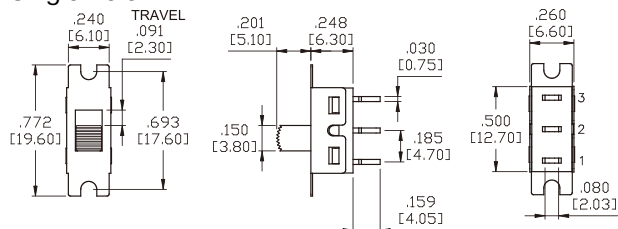
	Contact Material	Terminal Plating	Rating	Approvals
G	silver ¹	gold over silver	5A 125VAC or 28VDC 2A 250VAC	
K	gold ²	tin ^{3,5}	0.4VA max 20V max (AC/DC)	N/A
P	silver ¹	tin ^{3,5}	5A 125VAC or 28VDC 2A 250VAC	
Q	silver ¹	silver ¹	5A 125VAC or 28VDC 2A 250VAC	
R	gold ²	gold ²	0.4VA max 20V max (AC/DC)	N/A

8 EPOXY SEAL
E Epoxy Seal **0** without Epoxy Seal

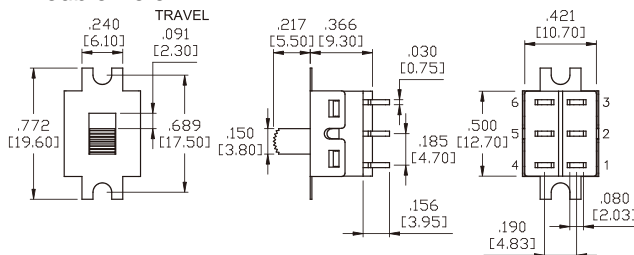
- Notes:
- Movable contact & terminal platings: silver over copper alloy
 - Movable contact & terminal platings: gold over nickel over copper alloy
 - Terminals platings: tin over nickel over copper alloy, available with PC terminations only
 - Non-Black, white and red colors require a minimum order of 2500 pieces
 - Tin option available with PC type terminations only

4M1-Series Dimensional Specifications: in. [mm]

Single Pole



Double Pole



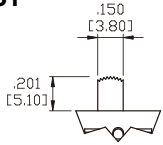
*Manufacturer reserves the right to change product specification without prior notice.

4M1-Series Dimensional Specifications: in. [mm]

Actuator Options

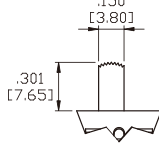
* All actuator length shown is SPDT model with M1 and M2 terminals.

S1



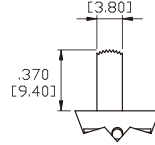
* Add 0.40 (.016) from actuator height for DPDT-M1 and M2 model.

S2



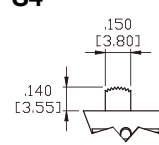
* Add 0.20 (.008) from actuator height for DPDT-M1 and M2 model.

S3



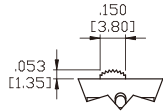
* Add 0.30 (.012) from actuator height for DPDT-M1 and M2 model.

S4

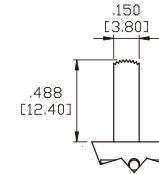


* Add 0.40 (.016) from actuator height for DPDT-M1 and M2 model.

S5

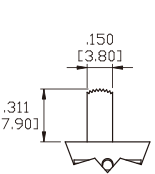


S6



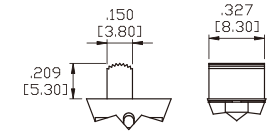
* Add 0.70 (.028) from actuator height for DPDT-M1 and M2 model.

S7



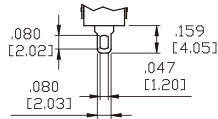
* Add 0.40 (.016) from actuator height for DPDT model.

T1 for DPDT only



Termination Options

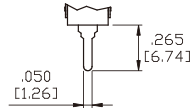
M1 Standard Solder Lug



THK .030 [0.75]

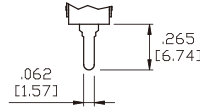
* Standard with Mounting Tabs.

M2 PC Thru-Hole



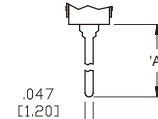
THK .030 [0.75]

M3 Quick Connect



THK .030 [0.75]

M5 Wire Wrap

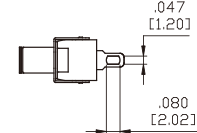
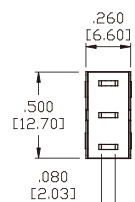
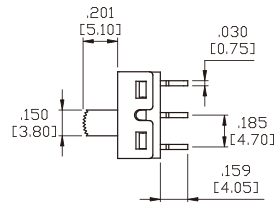
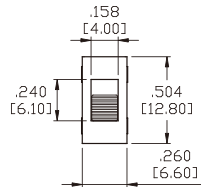


THK .030 [0.75]

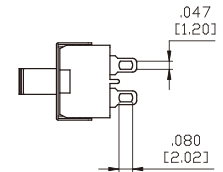
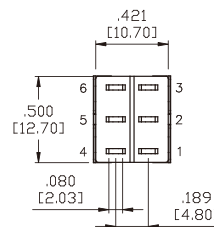
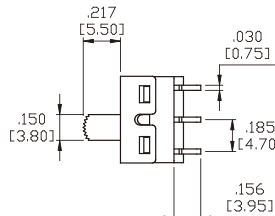
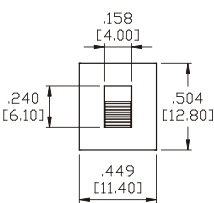
OPTION CODE	DIM.'A'
M5-1	.750 [19.05]
M5-2	.964 [24.48]
M5-3	.425 [10.80]
M5-4	1.062 [26.97]

Termination Options without Mounting Tabs

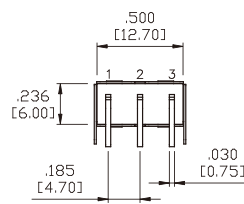
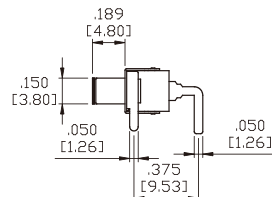
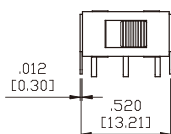
N1 Single Pole



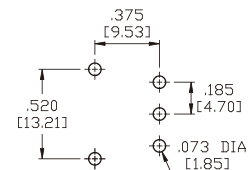
N1 Double Pole



M6 Single Pole



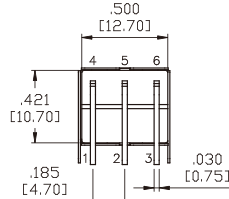
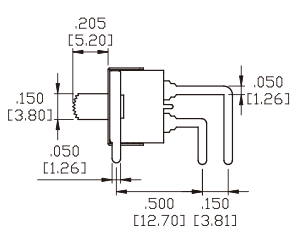
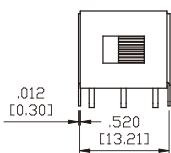
P.C. MOUNTING



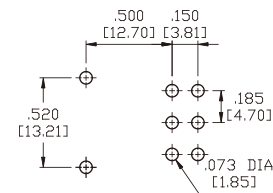
4M1-Series Dimensional Specifications: in. [mm]

Termination Options

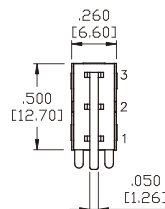
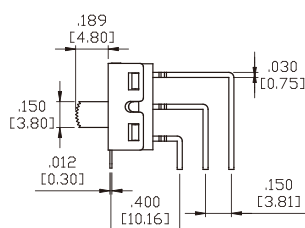
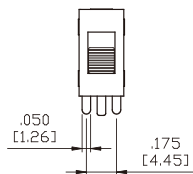
M6 Double Pole



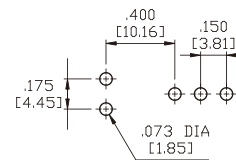
P.C.MOUNTING



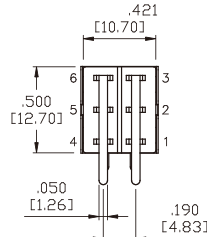
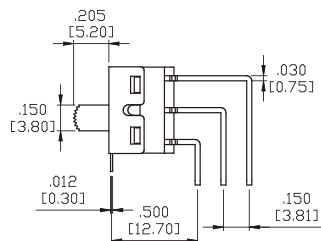
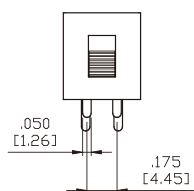
M7 Single Pole



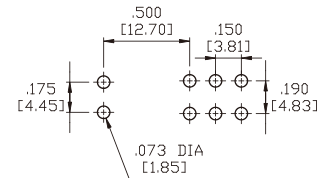
P.C.MOUNTING



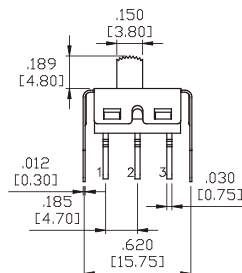
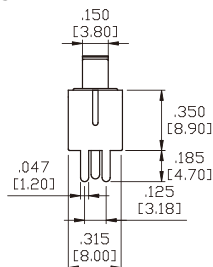
M7 Double Pole



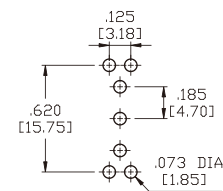
P.C.MOUNTING



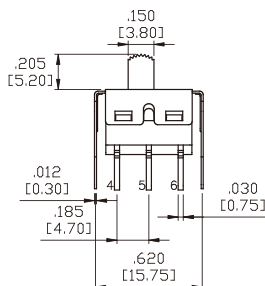
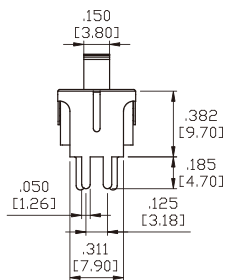
VS2 Single Pole



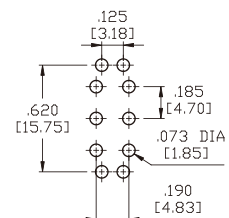
P.C.MOUNTING



VS2 Double Pole



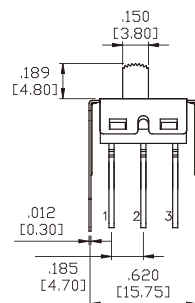
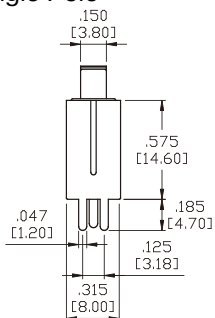
P.C.MOUNTING



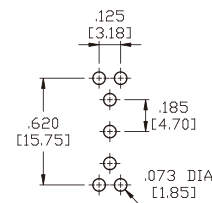
4M1-Series Dimensional Specifications: in. [mm]

Termination Options

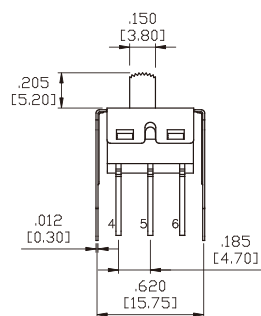
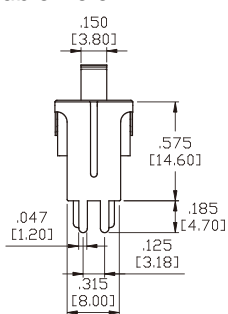
VS3 Single Pole



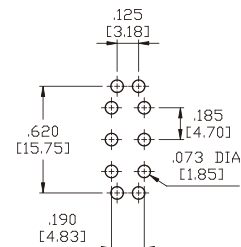
P.C.MOUNTING



VS3 Double Pole

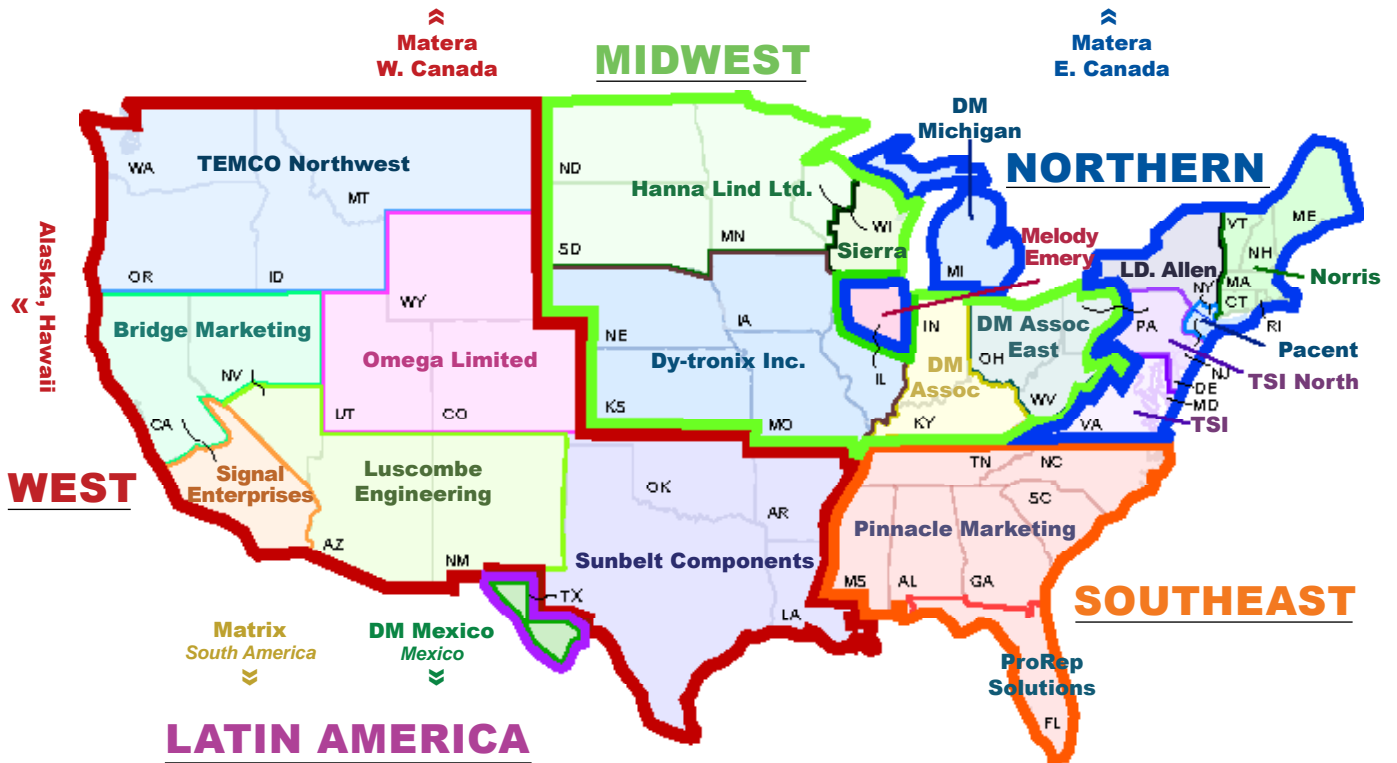


P.C.MOUNTING



Authorized Sales Representatives

Click on the group name on the map below to find your local representative or visit www.carlingtech.com/findarep.



Americas



Europe
Middle East
Africa



Asia-Pacific
Oceania

About Carling

Founded in 1920, Carling Technologies is a leading manufacturer of electrical and electronic switches and assemblies, circuit breakers, electronic controls, power distribution units, and multiplexed power distribution systems. With four ISO registered manufacturing facilities and technical sales offices worldwide, Carling Technologies Sales, Service and Engineering teams do much more than manufacture electrical components, they engineer powerful solutions! To learn more about Carling please visit www.carlingtech.com/company-profile.

To view all of Carling's environmental, quality, health & safety certifications please visit www.carlingtech.com/environmental-certifications

Worldwide Headquarters

Carling Technologies, Inc.
60 Johnson Avenue, Plainville, CT 06062
Phone: 860.793.9281 **Fax:** 860.793.9231
Email: sales@carlingtech.com

Northern Region Sales Office: nrsm@carlingtech.com
Southeast Region Sales Office: sersm@carlingtech.com
Midwest Region Sales Office: mrsrm@carlingtech.com
West Region Sales Office: wrsm@carlingtech.com
Latin America Sales Office: larsm@carlingtech.com

Asia-Pacific Headquarters

Carling Technologies, Asia-Pacific Ltd.,
Kowloon, Hong Kong
Phone: Int + 852-2737-2277 **Fax:** Int + 852-2736-9332
Email: sales@carlingtech.com.hk

Shenzhen, China: shenzhen@carlingtech.com
Shanghai, China: shanghai@carlingtech.com
Pune, India: india@carlingtech.com
Kaohsiung, Taiwan: taiwan@carlingtech.com
Yokohama, Japan: japan@carlingtech.com

Europe | Middle East | Africa Headquarters

Carling Technologies LTD
4 Airport Business Park, Exeter Airport,
Clyst Honiton, Exeter, Devon, EX5 2UL, UK
Phone: Int + 44 1392.364422 **Fax:** Int + 44 1392.364477
Email: ltd.sales@carlingtech.com

Germany: gmbh@carlingtech.com
France: sas@carlingtech.com



Carling Technologies®

Innovative Designs. Powerful Solutions.