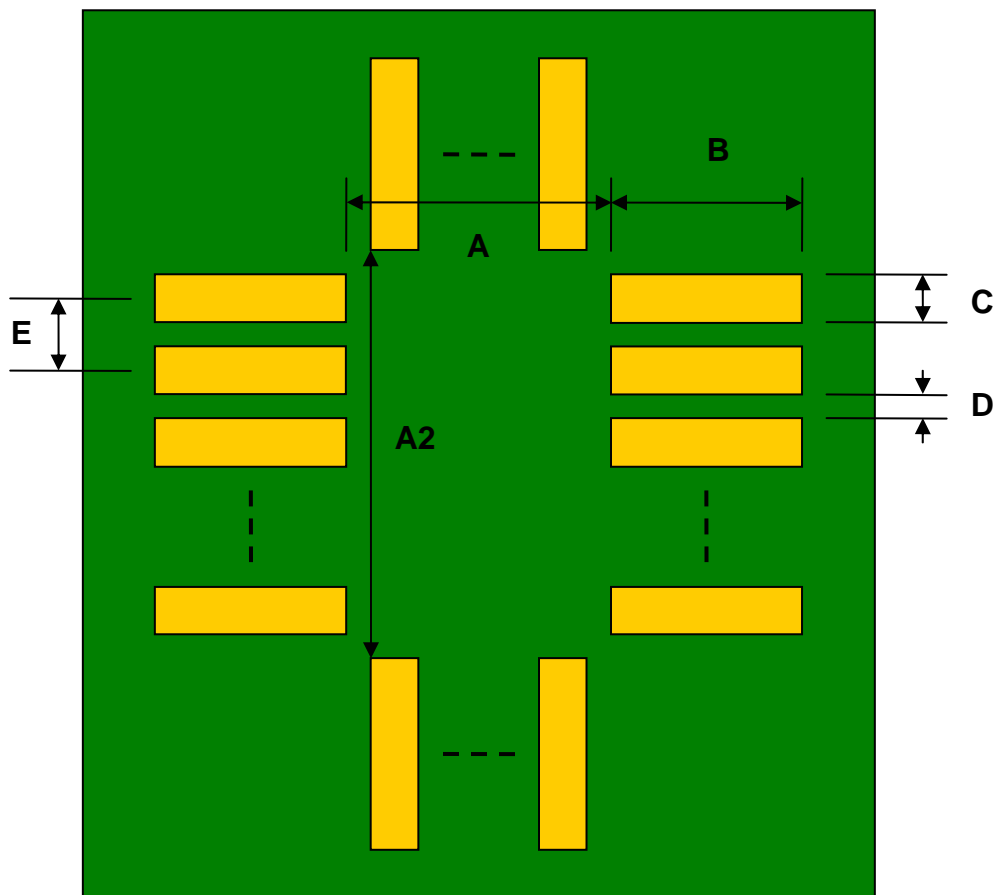


## QFN-28 to DIP-28 SMT Adapter (0.8 mm pitch, 7 x 7 mm body)

REF.	DIMENSIONS					
	mm			inches		
	MIN.	TYP.	MAX.	MIN.	TYP.	MAX.
A		6.00				
A2		6.00				
B		1.50				
C		0.45				
D		0.35				
E		0.80				
F					0.600	
G					0.100	
H					0.025	

Top View (SMT Footprint)



(Representative drawing only - not to scale)

### Bottom View (DIP Pins)



(Representative drawing only - not to scale)

### Side View (DIP Pins)



(Representative drawing only - not to scale)