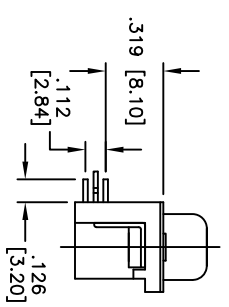
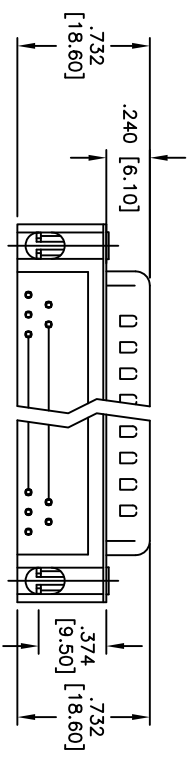
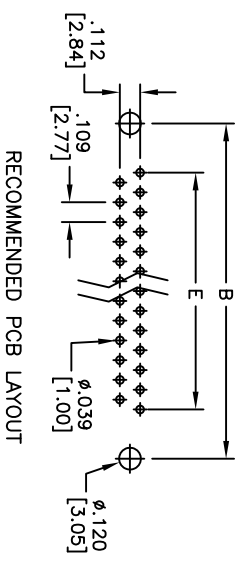
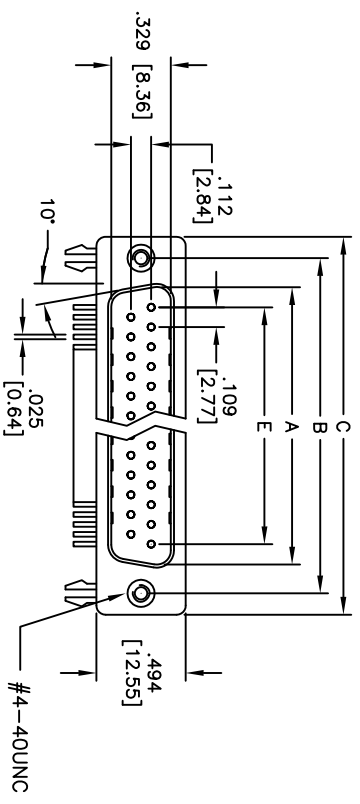


APPROVED: _____
 DATE: _____ TITLE: _____

| Rev | AWO # | Description | Date | Appr |
|-----|-------|-------------|---------|------|
| - | | RELEASED | 4/18/05 | |
| A | | REDRAWN | 4/9/12 | |



| DXXX | NO. OF CONTACTS | DIMENSIONS | | | | |
|------|-----------------|---------------|---------------|---------------|---------------|--|
| | | A | B | C | E | |
| DE09 | 9 | .666 [16.92] | .984 [24.99] | 1.213 [30.81] | .436 [11.08] | |
| DA15 | 15 | .994 [25.25] | 1.311 [33.30] | 1.543 [39.20] | .763 [19.39] | |
| DB25 | 25 | 1.573 [38.96] | 1.852 [47.04] | 2.089 [53.05] | 1.309 [33.24] | |
| DC37 | 37 | 2.182 [55.42] | 2.500 [63.50] | 2.732 [69.40] | 1.963 [49.86] | |

SPECIFICATIONS:
 Material: Insulator: PBT, glass reinforced, rated UL 94V-0
 Insulator color: Black
 Contacts: Copper Alloy
 Shell: Steel, Tin plated.
 Clinch Nut: Copper Alloy, Nickel plated
 Boardlock: Brass, Tin plated
 Plating: Gold flash over Nickel underplate overall
 Electrical: Operating voltage: 250 VAC max
 Current rating: 3 Amps max
 Contact resistance: 20 mohms max
 Insulation resistance: 1,000 Mohms min
 Dielectric withstanding voltage: 1,000 VAC for 1 minute
 Temperature Rating: Operating temperature: -55°C to +105°C
 Environmental: Lead free, RoHS compliant

ADAM TECH

909 Railway Avenue, Union, NJ 07083
 Phone: 908-687-5000 Fax: 908-687-5710

TITLE: .318 [8.08] FOOTPRINT D-SUB PLUG
 FORKED BOARDLOCKS, #4-40 INSERTS

| | | | |
|---|------------|--|--------|
| UNLESS OTHERWISE SPECIFIED ALL DIMENSIONS ARE INCHES [MM] | | TOLERANCES: EXCEPT AS NOTED INCHES HOLES | |
| .X | ±.10 | ØXX | ±.10 |
| .XX | ±.020 | ØXXX | ±.015 |
| .XXX | ±.015 | ØXXXX | ±.010 |
| APPROVALS | | DATE | |
| DRAWN | SS | 4/18/05 | |
| CHECKED | | | |
| APPROVED | | | |
| SIZE | PART NO. | SCALE | REV. |
| X | DXXX-PL-24 | NTS | A |
| REF: | S00087T | SHEET | 1 OF 1 |

