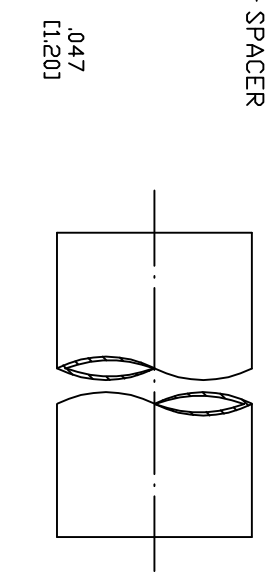
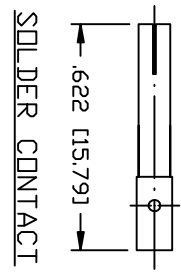
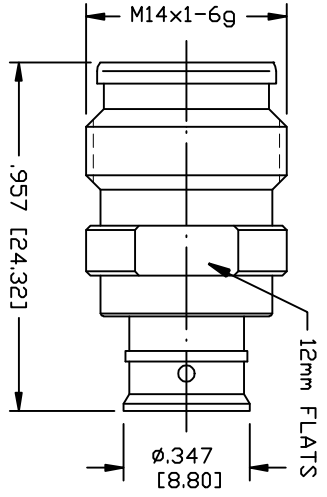


PART NO.		<b>RFD-225F-HPL</b>	
REV	DESCRIPTION	DWN	DATE
—	ENGINEERING RELEASE	CZS	10/05/20
		APPROVED	JDMC



**SPECIFICATIONS:**

INTERFACE: IEC61169-66  
 IMPEDANCE: 50 Ohms  
 FREQUENCY RANGE: 0-6 GHz  
 INSERTION LOSS: -0.1 dB MAX  
 RL MEASURED ON: SPP-250-LLPL X2 CONNECTORS  
 RETURN LOSS: 32 dB DC-700 MHZ  
 RETURN LOSS: 28 dB 700-2000 MHZ  
 RETURN LOSS: 25 dB 2000-3000 MHZ  
 RETURN LOSS: 22 dB 3000-4000 MHZ  
 RETURN LOSS: 18 dB 4000-6000 MHZ  
 3rd ORDER IM: 5-165 dbc @ 700 MHz & 1900 MHz  
 3rd ORDER IM TEST METHOD: 2x43 dBm CARRIERS  
 DC TEST VOLTAGE: 2800 V @ SEA LEVEL  
 INSULATION RESISTANCE: 5000 MΩ  
 TEMPERATURE RANGE: -55°C TO 85°C  
 MATING CYCLES: >100  
 NET WEIGHT: 0.05 lb  
 CERTIFICATIONS: RoHS  
 ENVIRONMENTAL: IEC 60529, IP68 MATED (2.5 BAR, 1 HOUR)  
 IEC 61169-1 CLAUSE 9.4.6 48 HOUR SALT MIST, 35°C  
 USED ON: SPP-250-LLPP, SPO-250, SCF14-50J, SPP-250,  
 FSJ1-50A, SCF14-50J, PFS1-50-P, TFI-401, EC1-50-HF

#	DESCRIPTION	QTY	MATERIAL	FINISH
5	GROUND RING	1	PHOSPHOR BRONZE	CUS2ZN ALLOY
4	SPACER	1	PTFE	NATURAL
3	CONTACT	1	PHOSPHOR BRONZE	SILVER
2	INSULATOR	1	PTFE	NATURAL
1	BODY	1	BRASS	CUS2ZN ALLOY

CUSTOMER  
 OUTLINE DRAWING  
 ALL DIMENSIONS  
 ARE REFERENCE ONLY  
 UNLESS OTHERWISE SPECIFIED:  
 DIMENSIONS ARE IN INCHES  
 AND [MILLIMETERS]

PROPRIETARY AND CONFIDENTIAL  
 THIS DRAWING CONTAINS  
 INFORMATION PROPRIETARY TO  
 RF INDUSTRIES. ANY  
 UNAUTHORIZED USE OF THIS  
 DRAWING IS EXPRESSLY  
 PROHIBITED WITHOUT WRITTEN  
 PERMISSION FROM RF  
 INDUSTRIES. ANY VIOLATION IS  
 PUNISHABLE UNDER U.S.  
 COPYRIGHT LAWS.

**RF Industries**  
 DIVISION OF RF INDUSTRIES, LTD. (858) 549-6345 FAX

**2.2/5 FEMALE**  
 FOR 1/4" SUPERFLEX CABLE

RFINDUSTRIES.COM  
 7610 MIRAMAR RD.  
 SAN DIEGO, CA 92126  
 (858) 549-6340

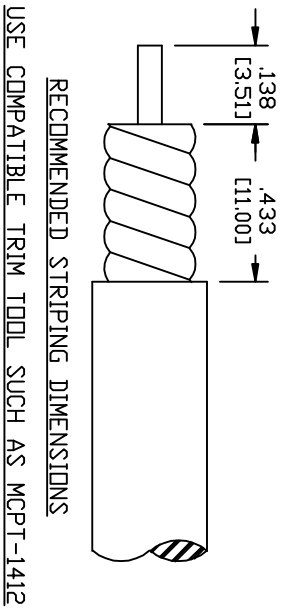
CABLE GROUP DWG #  
**RFD-225F-HPL**

FOR 1/4" SUPERFLEX CABLE

REVISION

DRW BY C. ZUNIGA	10/05/20	10/05/20
---------------------	----------	----------

FORMAT A	SCALE NTS	CONTROL # 000000	SHEET 1 OF 1
-------------	--------------	---------------------	--------------



RECOMMENDED STRIPPING DIMENSIONS  
 USE COMPATIBLE TRIM TOOL SUCH AS MCPT-1412