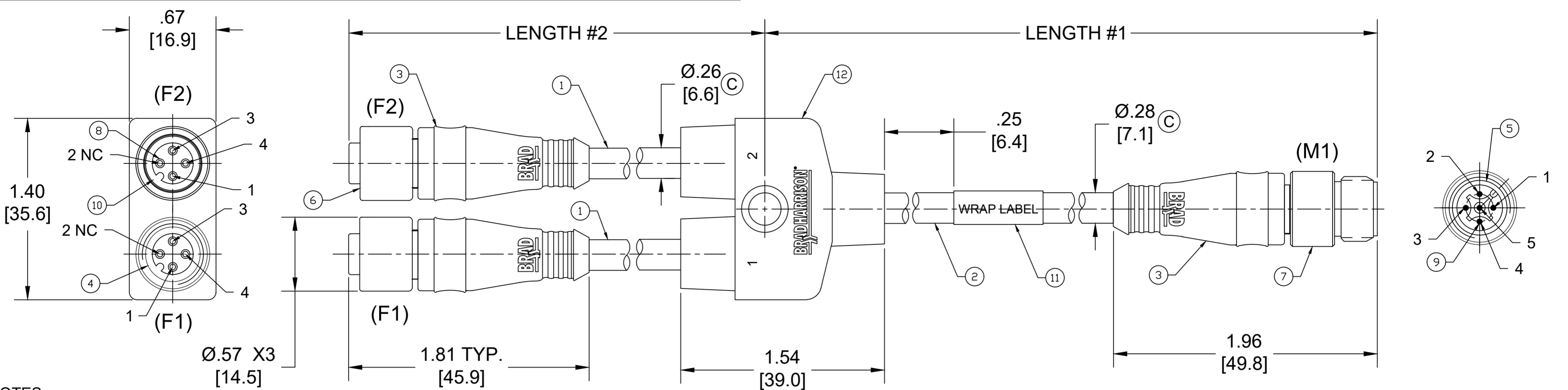


SAP P/N #	ENGINEERING P/N	FINISHED LENGTH #1	FINISHED LENGTH #2
1200680350	120068-0350	0.3M [1FT]	0.5M [1FT 8 IN]

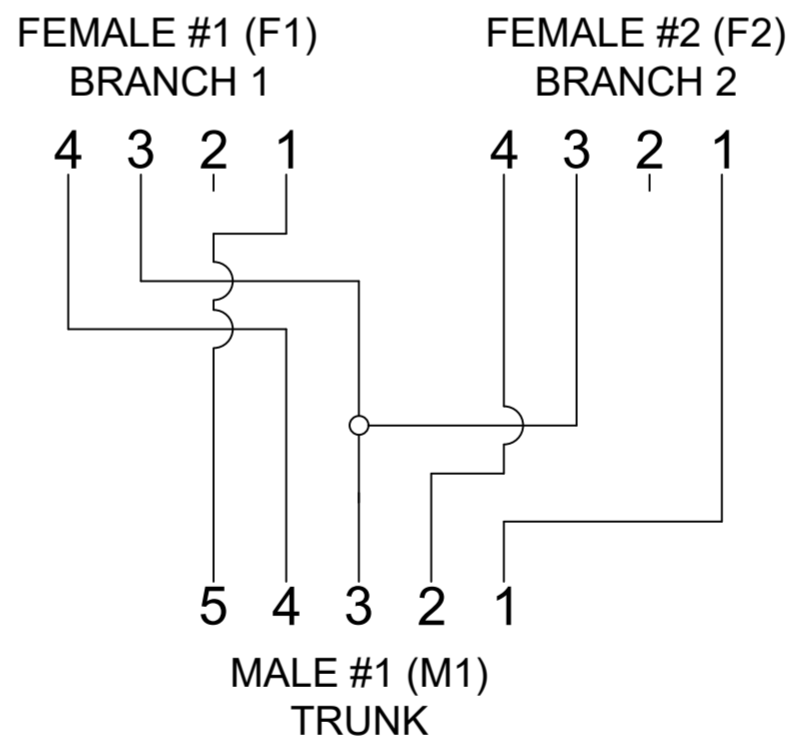


- NOTES:
1. MATERIALS: SEE TABLE
  2. FINISHES: SEE TABLE
  3. ELECTRICAL:  
CURRENT RATING: 4A  
VOLTAGE: 250V
  4. TEMPERATURE RATING: -20°C TO 105°C (C)
  5. PROTECTION: IP67 (IN FULLY MATED POSITION)
  6. COUPLING THREAD: M12 X 1 (C)
  7. CSA CERTIFIED FILE: LR6837 (C)
  8. ALL DIMENSIONS ARE FOR REFERENCE UNLESS TOLERANCED OR NOTED OTHERWISE

MECHANICAL CHARACTERISTICS:

TORSIONAL FLEX TEST	10 MILLION CYCLES PER MIL-C-13777G
BEND FLEX TEST	10 MILLION CYCLES PER MIL-C-13777G
WELD SLAG RESISTANCE	WOODHEAD STANDARD S-300

12	SPLITTER BODY OVERMOLD	TPC	RED
11	WRAP ID LABEL	VINYL	BLACK/YELLOW
10	O-RING	VITON	RED
9	MALE PIN CONTACT	COPPER ALLOY	GOLD PLATED
8	FEMALE SOCKET CONTACT	COPPER ALLOY	GOLD PLATED
7	MALE COUPLER	BRASS	NICKEL PLATED
6	FEMALE COUPLER	BRASS	NICKEL PLATED
5	MALE INSERT	PUR	BLACK
4	FEMALE INSERT	PUR	BLACK
3	OVERMOLD	TPC	RED
2	CABLE #18-5	TPE	YELLOW
1	CABLE #18-4	TPC	YELLOW
ITEM	DESCRIPTION	MATERIAL	FINISH



WIRING SCHEMATIC

(C)

**CABLE LENGTH TOLERANCES**

<.3M [1FT]:	+19mm-0 [+ .75in-0]
.3 - .9M [1 - 3FT]:	+44.5mm-0 [+1.75in-0]
.9 - 1.8M [3 - 6FT]:	+55.6mm-0 [+2.19in-0]
1.8 - 3.7M [6 - 12FT]:	+88.9mm-0 [+3.50in-0]
3.7 - 7.3M [12 - 24FT]:	+165.1mm-0 [+6.50in-0]
7.3-14.6M [24 - 48FT]:	+317.5mm-0 [+12.50in-0]
14.6 - 30.5M [48-100FT]:	+622.3mm-0 [+24.50in-0]
OVER 30M [100FT]:	+2% OF FINISHED LENGTH

FUNCTIONAL SYMBOLS	THIS DRAWING CONTAINS INFORMATION THAT IS PROPRIETARY TO MOLEX ELECTRONIC TECHNOLOGIES, LLC AND SHOULD NOT BE USED WITHOUT WRITTEN PERMISSION		CURRENT REV DESC: ITEM# 3 & 12 WERE TPE. ADDED COUPLING THREAD, CABLE DIA, TOL CHART, CSA & MECHANICAL CHARACTERISTIC. UPDATED TEMP RATING.	
	DIMENSION UNITS	SCALE		
(FA)=0	INCH/MM	NTS		
(FC)=0	GENERAL TOLERANCES (UNLESS SPECIFIED)			
(FP)=0		mm	INCH	
DIVISIONAL SYMBOLS	4 PLACES	±----	±----	
	3 PLACES	±----	±----	
	2 PLACES	±----	±----	
	1 PLACE	±----	±----	
	0 PLACES	±----	±----	
	ANGULAR TOL	±	----	°
	DRAFT WHERE APPLICABLE MUST REMAIN WITHIN DIMENSIONS	THIRD ANGLE PROJECTION		DRAWING
				C-SIZE
			SERIES	120068
			MATERIAL NUMBER	SEE CHART
			CUSTOMER	GENERAL MARKET
			SHEET NUMBER	1 OF 1

**micro-change cordset-splitter**  
M12, 5-3 POLE, MALE-FEMALE, STRAIGHT, SINGLE KEY, 18 AWG HI-FLEX

PRODUCT CUSTOMER DRAWING

DOCUMENT NUMBER: **SD-120068-154**    DOC TYPE/DOC PART: PSD 001    REVISION: C