

A02ES-I series

Emergency stop switches •
panel cut-out Ø 22 mm



DISTINCTIVE FEATURES

Approved to EN 60947-5-5, UL 508 and CSA C22.2 No 14-10

Pull or twist to release

AC-12, 6 A 240 VAC / DC-12, 8 A 24 VDC

Panel sealed to IP65

Illuminated model available



ELECTRICAL SPECIFICATIONS

- Electrical function : push to shut off, pull or twist to release
- Current/voltage rating :
AC-12, 10 A 24 VAC / 6 A 240 VAC
DC-12, 8 A 24 VDC
AC-15, 10 A 24 VAC / 3 A 240 VAC
DC-13, 4 A 24 VDC
- Electrical life : 100,000 cycles with one contact block
- Insulation resistance : 100 MΩ min.
- Dielectric strength : contact block 2,500 Vrms
- Contacts : silver

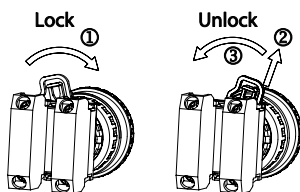


GENERAL SPECIFICATIONS

- Front panel sealing : IP65
- Terminal IP20 (fingersafe)
- Panel thickness : 6 mm (.236) max.
- Low level or mechanical life : 250,000 cycles w. one contact block
- Operating temperature : -20 °C to +55 °C (-4 °F to +131 °F)
- Switch terminals : M3.5 screws



MOUNTING LOCKING SYSTEM



The company reserves the right to change specifications without notice. Not for sale in Japan.



A02ES-I series

Emergency stop switches •
panel cut-out Ø 22 mm

AGENCY APPROVALS



UL 508
CSA C22.2 No 14-10



EN 60947-5-5

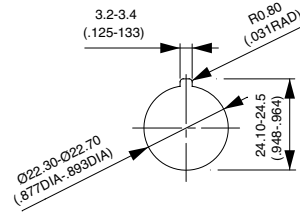


ABOUT THIS SERIES

- **Mounting accessories :**
standard hardware supplied : 1 nut and 1 flat panel seal



PANEL CUT-OUT



ELECTRICAL FUNCTIONS



Single pole
Normally closed



Double pole
Normally closed



Three pole
Normally closed

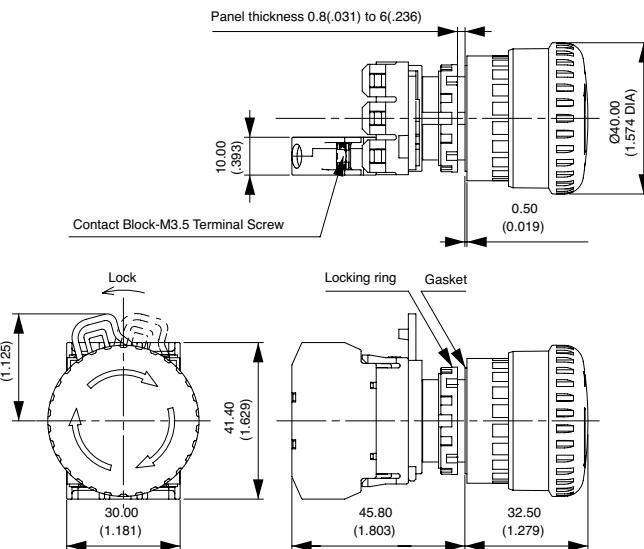
A02ES-I series

Emergency stop switches • panel cut-out Ø 22 mm

SINGLE POLE - NORMALLY CLOSED



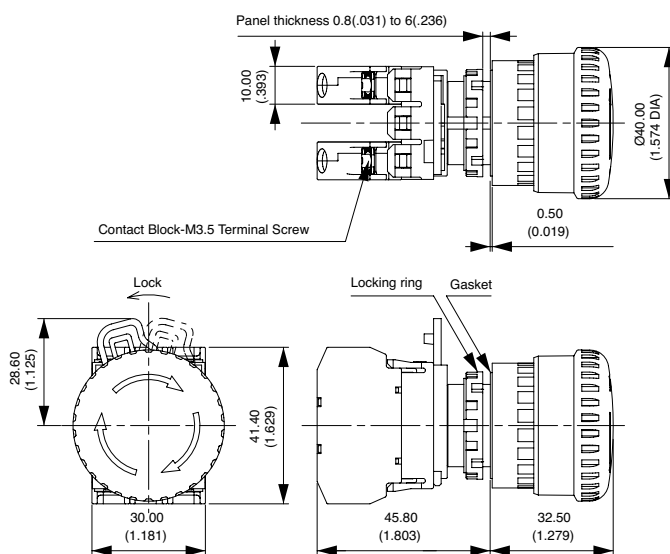
A02ESI3B101IX0



DOUBLE POLE - NORMALLY CLOSED



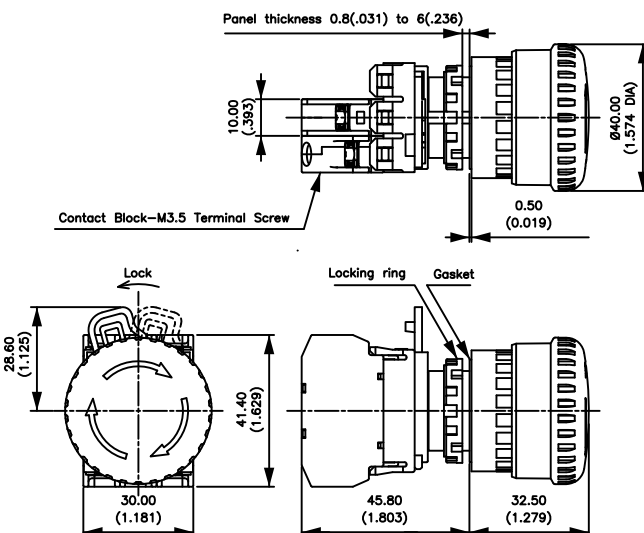
A02ESI3B102IX0



SINGLE POLE - NORMALLY CLOSED ILLUMINATED



With LED 24V
A02ESI4B101IR2



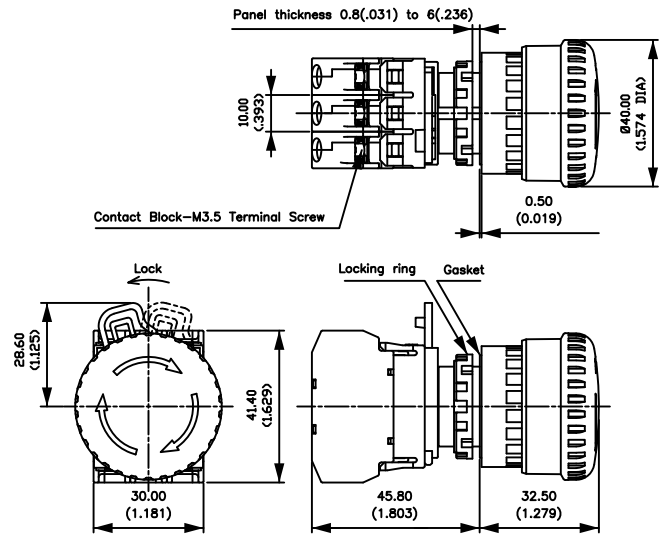
A02ES-I series

Emergency stop switches •
panel cut-out Ø 22 mm

THREE POLE – NORMALLY CLOSED



A02ESI3B103IX0

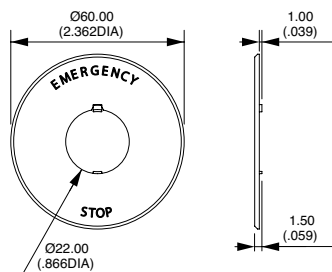


ACCESSORIES

Order separately.

Ø 60 MM NAME PLATE

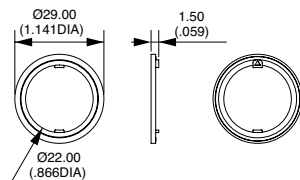
A02-U27Y



Legend "EMERGENCY STOP" is indicated outside a Ø 44 mm circle.

ANTI-ROTATION RING

A02-U9ZRL



LOCKING RING WRENCH

A02-U9ZT1

