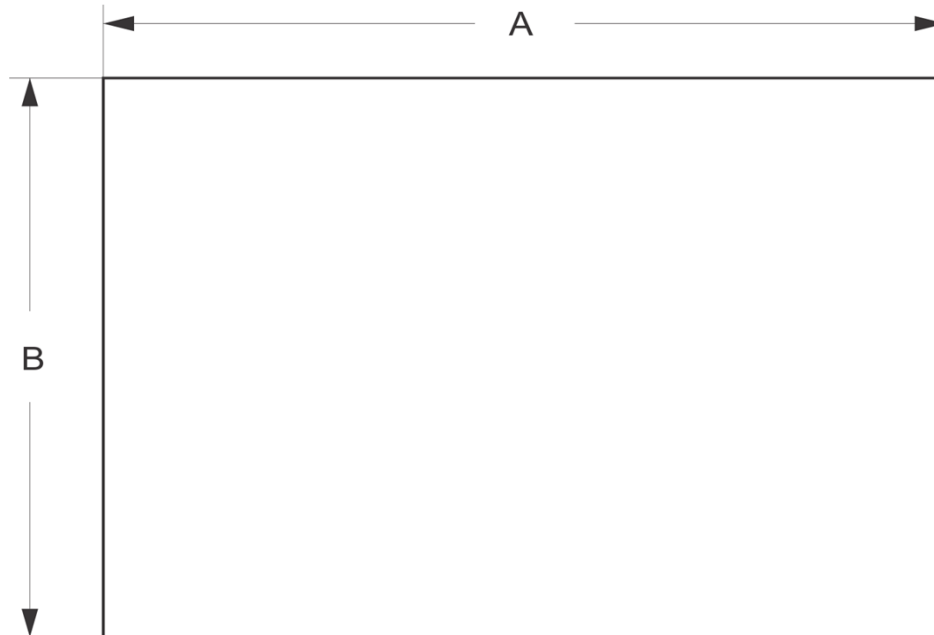




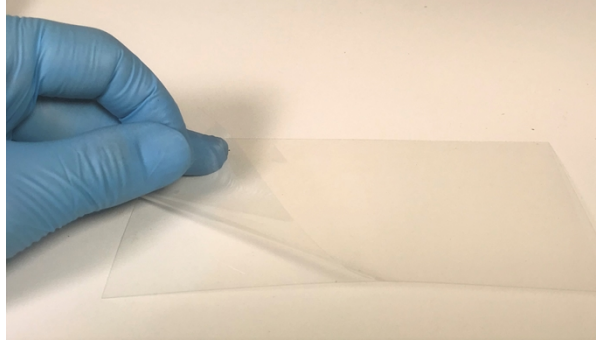
- 3M™ Glossy Low-Reflective Film (GLR320)
- Protect your Product Against Damage Caused by Scratches or Gouges
- Easy-to-Apply, Easy-to-Remove, Re-Positionable and Residue-Free
- Does Not Adversely Impact Touch Panel Operation



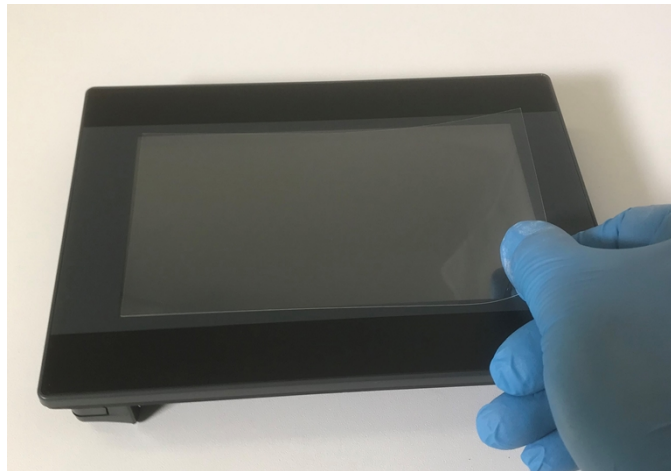
| Part Number  | Screen Size  | Products | Dim A (mm) | Dim B (mm) |
|--------------|--|----------|------------|------------|
| 2511-0043    | 4.3"   | All      | 94         | 53         |
| 2511-0070    | 7.0"   | HMI, cMT | 153        | 85         |
| 2511-0070A   | 7.0"   | HMC, OMI | 153        | 92         |
| 2511-0080    | 8.0"   | All      | 162        | 121        |
| 2511-0097    | 9.7"   | All      | 196        | 147        |
| 2511-0101    | 10.1"  | HMI, cMT | 222        | 125        |
| 2511-0101A   | 10.1"  | HMC      | 223        | 133        |
| 2511-0101B   | 10.1"  | OMI      | 227        | 136        |
| 2511-0104    | 10.4"  | All      | 221        | 160        |
| 2511-0121    | 12.1"  | All      | 245        | 187        |
| 2511-0150    | 15.0"  | All      | 303        | 228        |
| 2511-0156    | 15.6"  | All      | 343        | 193        |
| 2511-0170    | 17.0"  | All      | 338        | 270        |
| 2511-0185    | 18.5"  | All      | 410        | 231        |
| 2511-0190    | 19.0"  | All      | 379        | 303        |
| 2500-0215    | 21.5"  | All      | 477        | 268        |
| <b>Notes</b> | Dimensional Tolerance ±0.5mm<br>Specifications subject to change without notice. |          |            |            |

## How to Apply the Protective Screen to your Product

1. Place the protective screen centered onto the touchscreen area and take note of the spacing before installation in step 4.
2. Make sure the unit screen is free of dust and fingerprints. Use a damp microfiber or lint-free cleaning cloth, or any cleaning wipes you might use for your laptop LCD display.
3. Remove the thin transparent backing from the protective screen.  
**Note:** Use your finger on one of the corners of the protective screen to separate the backing from the protective screen and peel it off. This exposes the adhesive side of the protective screen.



4. Install the protective screen onto the touchscreen area as follows:
  - a. Position the protective screen (adhesive side down) as noted in step 1, in one of the corners of the unit's touchscreen area. Example Below:



- b. Slowly apply the protective screen onto the touchscreen, while avoiding forming air bubbles under the film. This may require the use of a soft cloth or plastic card (e.g. gift card, credit card) to apply even pressure as you install the protective screen across the touchscreen.



5. The protective screen may be removed and replaced as needed.