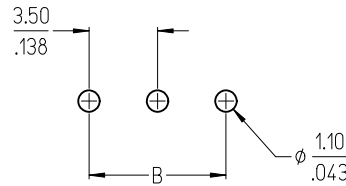


3 CIRCUIT AND 10A IMPRINTING OPTION SHOWN

NO. OF CIRCUITS "XX"	DIM. "A"	DIM. "B"	MATERIAL NO.	MATERIAL NO. 10A IMPRINT
02	7.0 (.28)	3.50 (.138)	39357-0002	393590006
03	10.5 (.41)	7.00 (.276)	39357-0003	393590004
04	14.0 (.55)	10.50 (.413)	39357-0004	
05	17.5 (.69)	14.00 (.551)	39357-0005	393590003
06	21.0 (.83)	17.50 (.689)	39357-0006	
07	24.5 (.96)	21.00 (.827)	39357-0007	
08	28.0 (1.10)	24.50 (.965)	39357-0008	
09	31.5 (1.24)	28.00 (1.102)	39357-0009	
10	35.0 (1.38)	31.50 (1.240)	39357-0010	
11	38.5 (1.52)	35.00 (1.378)	39357-0011	
12	42.0 (1.65)	38.50 (1.516)	39357-0012	
13	45.5 (1.79)	42.00 (1.654)	39357-0013	
14	49.0 (1.93)	45.50 (1.791)	39357-0014	
15	52.5 (2.07)	49.00 (1.929)	39357-0015	
16	56.0 (2.20)	52.50 (2.067)	39357-0016	
17	59.5 (2.34)	56.00 (2.205)	39357-0017	
18	63.0 (2.48)	59.50 (2.343)	39357-0018	
19	66.5 (2.62)	63.00 (2.480)	39357-0019	
20	70.0 (2.76)	66.50 (2.618)	39357-0020	
21	73.5 (2.89)	70.00 (2.756)	39357-0021	
22	77.0 (3.03)	73.50 (2.894)	39357-0022	
23	80.5 (3.17)	77.00 (3.031)	39357-0023	
24	84.0 (3.31)	80.50 (3.169)	39357-0024	
25	87.5 (3.44)	84.00 (3.307)	39357-0025	

NOTES:

- MATERIAL: SEE TABLE
- FINISHES: SEE TABLE
- ASSEMBLY IS ROHS COMPLIANT BY EXEMPTION. COMPONENTS MARKED WITH AN ASTERISK (*) ARE ROHS COMPLIANT BY EXEMPTION, ALL OTHERS ARE ROHS COMPLIANT.



ITEM	QTY.	DESCRIPTION	MATERIAL	FINISH
4	XX	SCREW, M2	COPPER ALLOY	NICKEL
3	XX	CAGE CLAMP (*)	COPPER ALLOY	NICKEL
2	XX	TERMINAL, PC	COPPER ALLOY	TIN
1	1	INSULATOR	POLYAMIDE	BLACK

ADD MATERIAL NO.
 EC NO: WNA2011-0328
 TIDRWA/CLYORK 2010/12/10
 CHKD:DTITUS
 APPR:DTITUS 2010/12/15

QUALITY SYMBOLS
 ▽=0
 ▽=0

GENERAL TOLERANCES (UNLESS SPECIFIED)
 mm INCH
 4 PLACES ± --- ± ---
 3 PLACES ± --- ± .005
 2 PLACES ± 0.13 ± .010
 1 PLACE ± 0.3 ± ---
 ANGULAR ± 2 °
 DRAFT WHERE APPLICABLE MUST REMAIN WITHIN DIMENSIONS

DIMENSION STYLE MM/IN
 DRAWN BY DATE
 CLYORK 2010/12/10
 CHECKED BY DATE
 DTITUS 2010/12/10
 APPROVED BY DATE
 DTITUS 2010/12/15

SCALE 1:1
 DESIGN UNITS INCH
 THIRD ANGLE PROJECTION
 TITLE 3.5MM EUROSTYLE LOW, SINGLE ROW FIXED BLOCK
 molex MOLEX INCORPORATED
 MATERIAL NO. SEE CHART
 DOCUMENT NO. SD-39357-001
 SHEET NO. 1 OF 1
 THIS DRAWING CONTAINS INFORMATION THAT IS PROPRIETARY TO MOLEX INCORPORATED AND SHOULD NOT BE USED WITHOUT WRITTEN PERMISSION