

End plate, Width: 1.5 mm, Colour: Green

Business data

| | |
|--|---------------|
| Article number | 27100.1 |
| Article name | PAP 1,5/2A GN |
| GTIN (EAN) | 4044211224257 |
| Packaging unit | 20 |
| Quantity unit | PC |
| Weight per piece (not including packaging) | 1.25 g |
| Weight per piece (including packaging) | 1.26 g |
| Unit of weight | G |
| Customs number | 85389099 |
| Country of origin | DE |
| Prio-Article | 27100.6 |
| Product description | End plate |

Technical data

Dimensions

| | |
|--------|--------|
| Length | 45 mm |
| Width | 1.5 mm |
| Height | 24 mm |

Materials

| | |
|---------------------------|---------------|
| Material | Polyamide 6.6 |
| Flammability class UL 94 | V-0 |
| Working temperature, min. | -40 °C |
| Working temperature, max. | 120 °C |

Environmental Product Compliance

| | |
|--------------------------------|------------|
| REACH Conform | yes |
| REACH Reference date | 2022-06-10 |
| REACH Candidate Substance Note | No |
| RoHS Conform | yes |

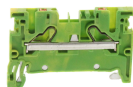
Media



27100.1 PAP 1,5/2A GN

Accessories

Terminal blocks



Protective earth terminal, Push-in connection, Mounting type: Mounting rail TS 35/7.5, Rated cross-section: 1.5 mm², Width: 3.5 mm, Colour: Green-yellow

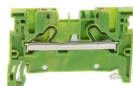
| Article number | Article name | GTIN (EAN) | Packaging unit |
|----------------|-----------------|---------------|----------------|
| <u>27001.2</u> | PSL 1,5/2A GNYE | 4044211223687 | 50 ST |



Feed-through terminal, Push-in connection, Mounting type: Mounting rail TS 35/7.5, Rated cross-section: 1.5 mm², Width: 3.5 mm, Colour: Grey

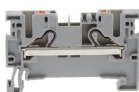
| Article number | Article name | GTIN (EAN) | Packaging unit |
|----------------|---------------|---------------|----------------|
| <u>27000.6</u> | PRK 1,5/2A GR | 4044211223670 | 50 |

##INVERSE##CONTA-CONNECT



Protective earth terminal, Push-in connection, Mounting type: Mounting rail TS 35/7.5, Rated cross-section: 1.5 mm², Width: 3.5 mm, Colour: Green-yellow

| Article number | Article name | GTIN (EAN) | Packaging unit |
|----------------|-----------------|---------------|----------------|
| <u>27001.2</u> | PSL 1,5/2A GNYE | 4044211223687 | 50 ST |



Feed-through terminal, Push-in connection, Mounting type: Mounting rail TS 35/7.5, Rated cross-section: 1.5 mm², Width: 3.5 mm, Colour: Grey

| Article number | Article name | GTIN (EAN) | Packaging unit |
|----------------|---------------|---------------|----------------|
| <u>27000.6</u> | PRK 1,5/2A GR | 4044211223670 | 50 |