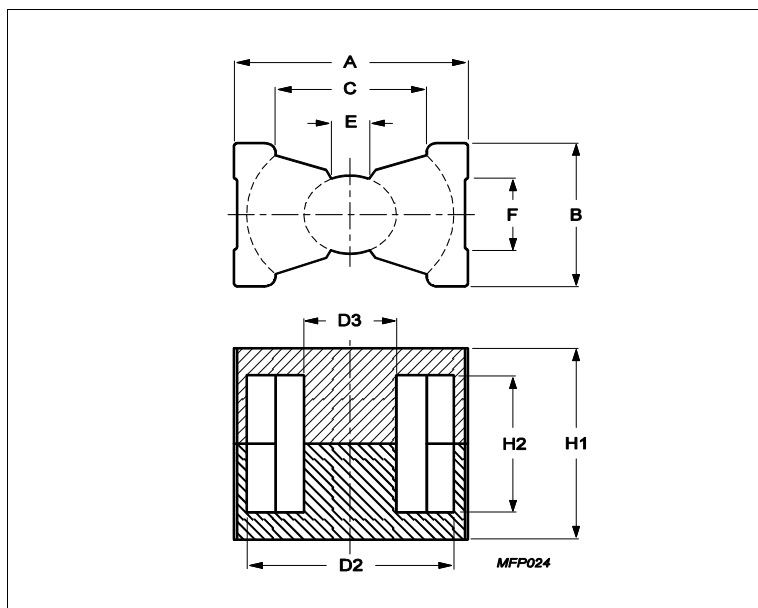


## Core **PQ26/25**



Effective parameters			
	Parameter	Value	Unit
$\Sigma(I/A)$	core factor (C1)	0.451	mm <sup>-1</sup>
<b>Ve</b>	effective volume	6530	mm <sup>3</sup>
<b>Le</b>	effective length	54.3	mm
<b>Ae</b>	effective area	120	mm <sup>2</sup>
<b>Amin</b>	minimum area	108	mm <sup>2</sup>
<b>m</b>	PQ26/25	≈ 36	g/set

Dimensions for product: PQ26/25

	Nom	Tol +	Tol -	Max	Min	Unit
<b>A</b>	27.30	0.46	0.46	27.76	26.84	mm
<b>B</b>	19.00	0.45	0.45	19.45	18.55	mm
<b>C</b>					15.50	mm
<b>D2</b>	22.50	0.46	0.46	22.96	22.04	mm
<b>D3</b>	12.00	0.20	0.20	12.20	11.80	mm
<b>E</b>					6.00	mm
<b>F</b>					10.50	mm
<b>H1</b>	24.70	0.25	0.25	24.95	24.45	mm
<b>H2</b>	16.10	0.30	0.30	16.40	15.80	mm

Inductance factor

Material	Value	Tol +	Tol -	Unit
3C94	5250	25%	25%	nH/turns <sup>2</sup>
3C95	5900	25%	25%	nH/turns <sup>2</sup>
3C96	4700	25%	25%	nH/turns <sup>2</sup>
3C97	6010	25%	25%	nH/turns <sup>2</sup>
3F36	3100	25%	25%	nH/turns <sup>2</sup>
3F46	1900	25%	25%	nH/turns <sup>2</sup>

Power loss: 3C94

Measuring conditions			Max	Unit
100 kHz	200 mT	100 °C	3.300	W/set

Power loss: 3C95

Measuring conditions			Max	Unit

## Core **PQ26/25**

Power loss: 3C95				
Measuring conditions			Max	Unit
100 kHz	200 mT	100 °C	3.100	W/set
100 kHz	200 mT	25 °C	3.400	W/set
Power loss: 3C96				
Measuring conditions			Max	Unit
100 kHz	200 mT	100 °C	2.900	W/set
400 kHz	50 mT	100 °C	1.200	W/set
Power loss: 3C97				
Measuring conditions			Max	Unit
100 kHz	200 mT	60 °C	3.300	W/set
100 kHz	200 mT	120 °C	3.100	W/set
100 kHz	200 mT	140 °C	3.900	W/set
Power loss: 3F36				
Measuring conditions			Max	Unit
500 kHz	50 mT	100 °C	0.980	W/set
500 kHz	100 mT	100 °C	7.500	W/set
Power loss: 3F46				
Measuring conditions			Max	Unit
1000 kHz	50 mT	100 °C	3.600	W/set
3000 kHz	10 mT	100 °C	2.300	W/set

Bsat					
Measuring conditions			Material	Min	Unit
25 kHz	250 A/m	100 °C	3C94	320	mT
25 kHz	250 A/m	100 °C	3C95	330	mT
25 kHz	250 A/m	100 °C	3C96	340	mT
25 kHz	250 A/m	100 °C	3C97	330	mT
25 kHz	250 A/m	100 °C	3F36	340	mT
25 kHz	250 A/m	100 °C	3F46	330	mT

Accessories		
Ordering name	Description	Ordering code
CLM/P-PQ26/25	Clamp, with ground pin	F0MPQ02625CLMP000P
CPV-PQ26/25-1S-12PD-Z	Coil former, termoplastic, vertical	F0PPQ02625CV01112P
CPV-PQ26/25-1S-12P-Z	Coil former, termoplastic, vertical	F0PPQ02625CV00112P
CSV-PQ26/25-1S-12P-ZF	Coil former, termoset, vertical	F0SPQ02625CV00112P