

“Stay Connected” with



Strain Relief Bushings

a PennEngineering® Company



## Heyco® Original Strain Relief Bushings

Straight-Thru for Round Cables

.875" (22,2 mm) to 1.187" (30,1 mm) Mounting Holes

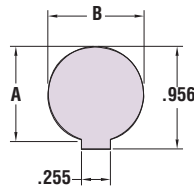
Fit 1/2" or 3/4" Electrical Knock-out Hole Sizes

- **Protects the lifeline of your electric/ electronic products** by absorbing the forces of pull, push, and twist that may be exerted on the flexible power cord.
- Securely anchors, insulates, and protects cables at panel entry points.
- Sizes SR 7-Series to SR 9-Series for mounting hole diameters from .875" (22,2 mm) to 1.187" (28,6 mm).
- Sizes for thin .062" (1,6 mm) panel available: SR 8N-2  
See chart for details.
- See page 4-38 for corresponding **Mounting Hole Plugs** which can be used to fill blank/unused Mounting Holes and thus allow for a single panel design for multiple applications.
- Consult Heyco for other wire types and sizes.
- See pages 4-27 & 4-28 for SR assembly tools.
- For Double D Mounting Hole Punches, see page 4-30.

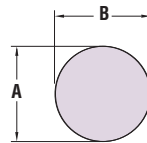
| WILL FIT THESE CABLES        |                 |                  |               | PANEL DIMENSIONS     |      |                       |      |                               |     | PART NO. |       | DESCRIPTION | PART DIM.     |      | Mounting Hole Plug PART NO. |
|------------------------------|-----------------|------------------|---------------|----------------------|------|-----------------------|------|-------------------------------|-----|----------|-------|-------------|---------------|------|-----------------------------|
| UL Type                      | AWG/ Conductors | Approximate Size |               | A Mounting Hole Dia. |      | B To Prevent Rotation |      | Finished Fit Panel Thickness* |     | Black    | White |             | C BODY LENGTH |      |                             |
|                              |                 | in.              | mm.           | in.                  | mm.  | in.                   | mm.  | in.                           | mm. |          |       | in.         | mm.           |      |                             |
| SJ, SJT & SJO                | 16/2            | .325             | 8,3           | .875                 | 22,2 | .770                  | 19,6 | .125                          | 3,2 | 1240     | 1241  | SR 7K-2     | .750          | 19,1 | 2509                        |
|                              | 18/3            | .330             | 8,4           |                      |      |                       |      |                               |     |          |       |             |               |      |                             |
|                              | 14/2            | .350             | 8,9           |                      |      |                       |      |                               |     |          |       |             |               |      |                             |
|                              | 16/3            | .355             | 9,0           |                      |      |                       |      |                               |     |          |       |             |               |      |                             |
|                              | 18/4            | .360             | 9,1           |                      |      |                       |      |                               |     |          |       |             |               |      |                             |
| Same as SR 7K-2 above except |                 |                  |               | See Schematic        |      |                       |      | .125                          | 3,2 | 1271     | 1272  | SR 7KR-2    | .750          | 19,1 | 2509                        |
| SJT                          | 14/3            | .370             | 9,4           | .875                 | 22,2 | .770                  | 19,6 | .125                          | 3,2 | 1247     | 1248  | SR 7W-2     | .750          | 19,1 | 2509                        |
|                              | 12/3            | .425             | 10,8          |                      |      |                       |      |                               |     |          |       |             |               |      |                             |
| S, SO, & ST                  | 18/2            | .390             | 9,9           |                      |      |                       |      |                               |     |          |       |             |               |      |                             |
|                              | 18/3            | .405             | 10,3          |                      |      |                       |      |                               |     |          |       |             |               |      |                             |
|                              | 16/2            | .405             | 10,3          |                      |      |                       |      |                               |     |          |       |             |               |      |                             |
|                              | 16/3            | .430             | 10,9          |                      |      |                       |      |                               |     |          |       |             |               |      |                             |
| Same as SR 7W-2 above except |                 |                  |               |                      |      |                       |      | .200                          | 5,1 | 1250     | 1251  | SR 7L-2     | .750          | 19,1 | consult Heyco               |
| SJT                          | 12/3            | .425-<br>.475    | 10,8-<br>12,1 | .875                 | 22,2 | .840                  | 21,3 | .125                          | 3,2 | 1497     | 1498  | SR 31-2     | .812          | 20,6 | 2509                        |
|                              | 14/2            | .530             | 13,5          |                      |      |                       |      |                               |     |          |       |             |               |      |                             |
| S & ST                       | 14/3            | .560             | 14,2          |                      |      |                       |      |                               |     |          |       |             |               |      |                             |
|                              | 12/2            | .600             | 15,3          |                      |      |                       |      |                               |     |          |       |             |               |      |                             |
| Same as SR 8N-2 above except |                 |                  |               |                      |      |                       |      |                               |     |          |       |             |               |      |                             |
| S                            | 12/2            | .600             | 15,2          | 1.093                | 27,7 | 1.000                 | 25,4 | .281                          | 7,1 | 1287     | 1288  | SR 9P-2     | 1.000         | 25,4 | 2717                        |
|                              | 12/3            | .635             | 16,1          | 1.093                | 27,7 |                       |      |                               |     |          |       |             |               |      |                             |
|                              | 10/2            | .640             | 16,3          | 1.093                | 27,7 |                       |      |                               |     |          |       |             |               |      |                             |
| S, SO & ST                   | 10/3            | .690             | 17,5          | 1.187                | 30,2 |                       |      |                               |     |          |       |             |               |      |                             |
|                              | SRDT            | 10/4             |               |                      |      |                       |      |                               |     |          |       |             |               |      |                             |

Standard color black. Consult Heyco for other colors.

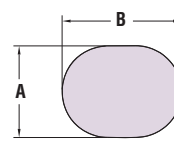
\*Maximum Panel Thickness. Part has additional clearance. Consult Heyco for your Custom Finished Fit Panel Thickness.



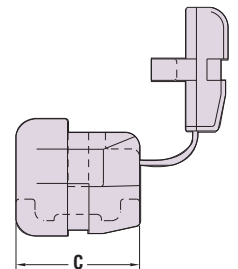
FOR SR-7KR-2 ONLY



STANDARD MOUNTING HOLES



ELONGATED MOUNTING HOLE



Quick Specs

Material  
Certifications

Nylon 6/6



Recognized under the Component Program of Underwriters' Laboratories File E15331



Certified by the Canadian Standards Association File 8919

Flammability Rating  
Temperature Range

94V-2

-.04°F (-18°C) to 221°F (105°C)