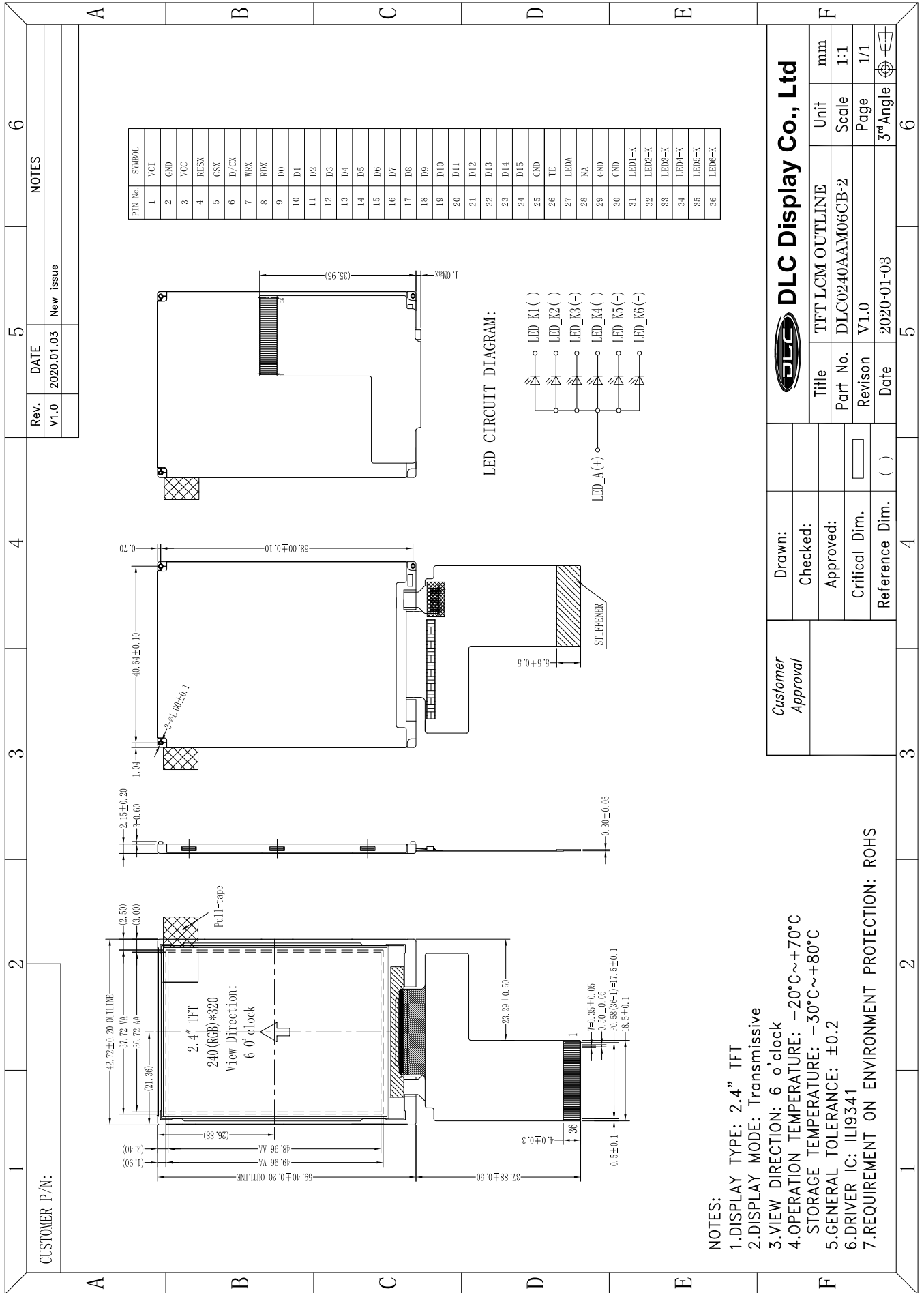


Outline Drawing



NOTES:

- 1.DISPLAY TYPE: 2.4" TFT
- 2.DISPLAY MODE: Transmissive
- 3.VIEW DIRECTION: 6 o'clock
- 4.OPERATION TEMPERATURE: -20°C~+70°C
- 5.GENERAL TOLERANCE: ±0.2
- 6.DRIVER IC: ILI9341
- 7.REQUIREMENT ON ENVIRONMENT PROTECTION: ROHS

**DLC Display Co., Ltd**

Customer Approval	Drawn:	Title	TFT LCM OUTLINE	Unit	mm
	Checked:	Part No.	DLC0240AAM06CB-2	Scale	1:1
	Approved:	Revision	V1.0	Page	1/1
	Critical Dim.	Date	2020-01-03	3rd Angle	
	Reference Dim.	( )			