



P0K1.281.2K.B.150.R.S

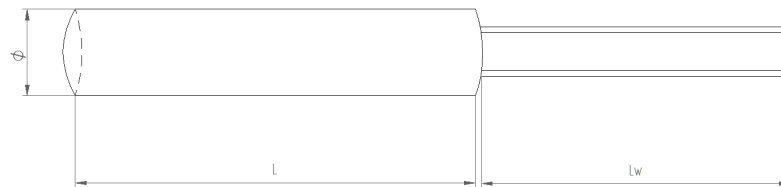
Platinum sensor with round ceramic housing

For low temperatures

Benefits & Characteristics

- Same dimensions as a traditional wire wound sensor - easy interchangeability into existing applications
- Easy to assemble (boreholes etc.)
- Excellent long-term stability
- Vibration and temperature shock resistant (depending on assembly)
- Fast response time (depending on assembly)
- Low self-heating

Illustration



Technical Data

Operating temperature range:	-50 °C to +200 °C	
Nominal resistance:*	100 Ω at 0 °C	
Characteristics curve:*	3850 ppm/K	
Long-term stability:	< 0.04 % at 1000 h at maximal operating temperature	
Tolerance class (dependent on temperature range):*	IEC 60751 F0.3	B (IST AG reference)
Connection:*	Cu/Ag Stranded wire, AWG26, PTFE insulated, 150 mm long, ends 4 mm stripped	
Recommended applied current: ²⁾	1 mA at 100 Ω	
²⁾ Self-heating must be considered		
Dimensions:	2.8 x 13.0	
Tolerance (chip):	Ø ±0.2 mm, L ±1 mm, L _w (up to 30 mm) ±1 mm	

Product Photo





Order Information

Description:	Item number:	Former main reference:
POK1.281.2K.B.150.R.S	100481	010.00796

Additional Documents

Application Note:	Document name:
	ATP_E

