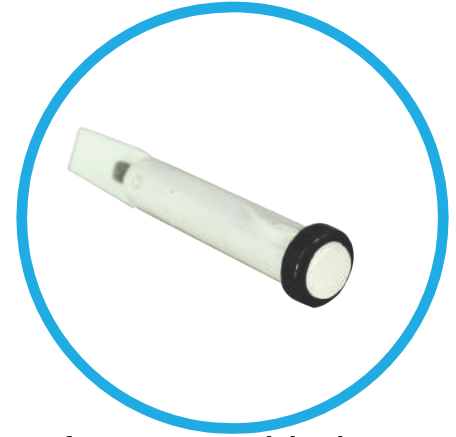




## 970 Series Ø 0.313" (8.0mm) Snap - Mount Panel Mount Indicator Lights



970 Series non-relampable snap mount indicator lights feature molded plastic flex arms which ensure easy front panel installation into a 5/16" diameter hole.

### Approval

REACH/RoHS/cURus ("No Lens" - Body Only - assembly is not cURus)

### Specifications

Housing: White nylon (standard), black optional, other color available to special order.

Bezel: Chrome-plated finish standard. Black anodized, clear anodized, or gold iridite finish available to special order. Bezel are required on all lens styles except Type 92 ( Flat cylindrical faceted).

Terminations: Wire leads: Black # 18 gauge, PVC plastic insulated. UL-CSA rated at 105°C. 6" long, 1/2 stripped.

Terminals: Brass, Tin-plated. 125" quick-connect.

Incandescent AC or DC voltage options: 6 to 28 volts.

High brightness Neon AC Voltage options: 125 to 250 volts.

Blue or Green Neon AC or DC Voltage options: 125 to 250 volts.

LED DC voltage options: 1.8 to 28 volts.

Lens: Heat resistant, high strength polycarbonate.

Lens Marking: Flat lenses may be marked. Contact factory.

Mounting: Designed to snap securely into a .312"/.318" diameter hole. Panel thickness ranges from .040" to .100".

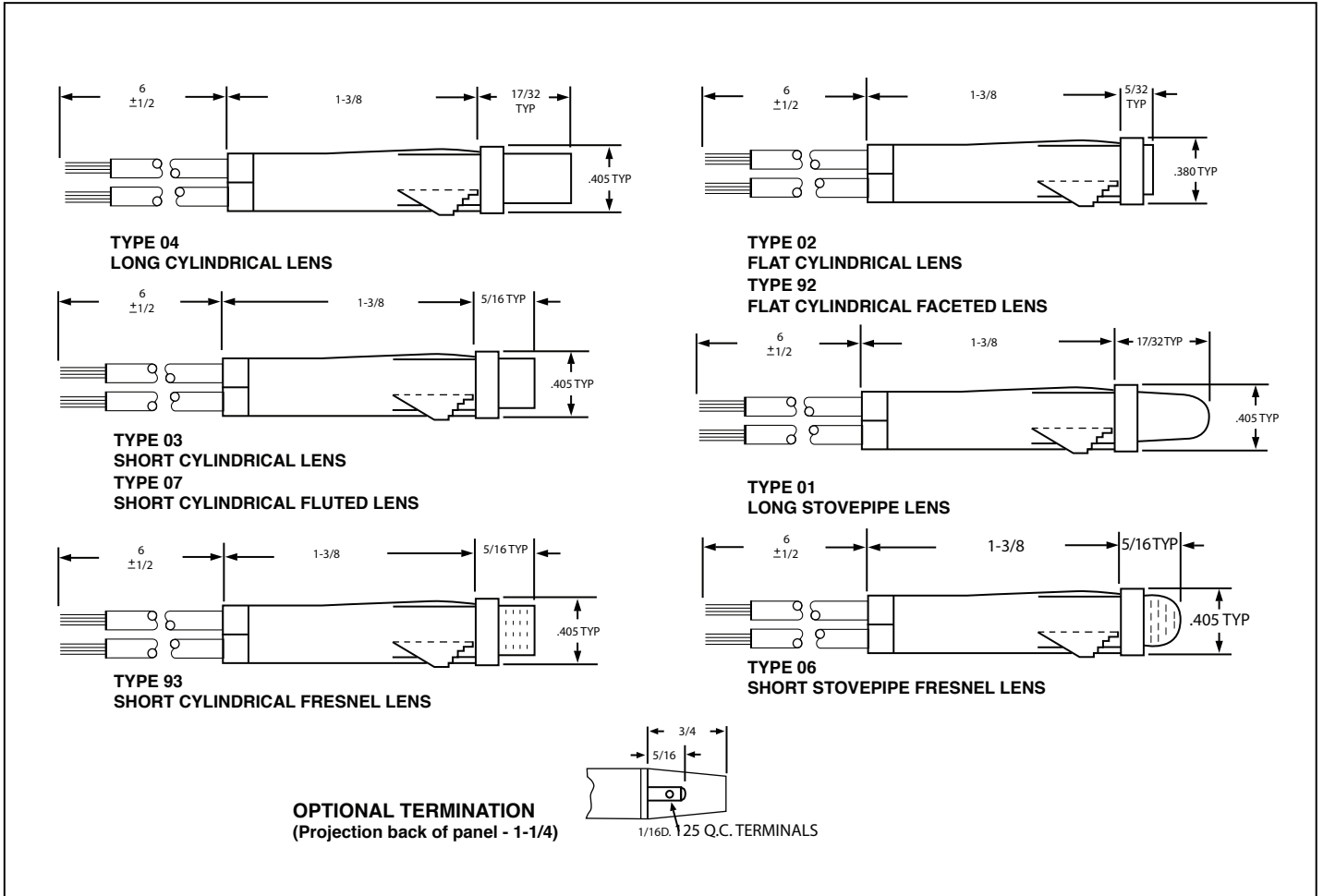
# Ordering Data

ORDERING INFORMATION: INCANDESCENT AND NEON LAMPS													
EXAMPLE: 971 6 12 X 01 W RT													
Chrome Plated Bezel		Wire Leads		6.3 Volt Incandescent Lamp		No Resistor		Long Stovepipe Lens		White Housing		Red Translucent Lens	
Series Number	Termination	Lamp				Resistor	Lens Type	Housing Color	Lens Color				
		Code	Volts	MA	Life (Hrs)								
970 <sup>2</sup> No Bezel	6 6" Wire Leads	03	14.0	80	15,000	X None (No Resistor required with Incandescent Lamps)	01 Long Stovepipe (Smooth)	W White (Standard)	Nondiffusing (Clear)				
971 Chrome Plated Bezel		04	28.0	40	7,000		02 Flat Cylindrical (Smooth)		AN Amber				
972 Black Anodized Bezel	9 .125" Q.C. Terminals	Neon (High Brightness)				A 22K OHM T 150K OHM B 30K OHM E 100K OHM B 30K OHM E 100K OHM	03 Short Cylindrical (Smooth)		BN Blue				
		70 <sup>3</sup>	125	1/3 W	10,000		04 Long Cylindrical (Smooth)		CN Colorless				
		71 <sup>3</sup>	250	1/3 W	10,000		06 <sup>6</sup> Short Stovepipe (Fresnel)		GN Green				
		56 <sup>4</sup>	125	1/3 W	10,000		07 <sup>6</sup> Short Cylindrical (Fluted)		RN Red				
56 <sup>4</sup>		250	1/3 W	10,000	92 <sup>6,7</sup> Flat Cylindrical (Faceted)		WN White (cloudy)						
57 <sup>5</sup>		125	1/3 W	10,000	93 <sup>6</sup> Short Cylindrical (Fresnel)		YN Yellow						
973 Clear Anodized Bezel	57 <sup>5</sup>	250	1/3 W	10,000									
<sup>2</sup> Use only with lens type 92. <sup>3</sup> Standard Neon. Use with lens color AN, CN, RN, WN, or YN. <sup>4</sup> Green Neon. Use with lens color CN, GN, or WN. <sup>5</sup> Blue Neon. Use with lens color BN, CN, or WN. <sup>6</sup> Nondiffusing lens colors. <sup>7</sup> No Bezel Required. <sup>8</sup> Not recommended for use with neon lamps.													

LED LAMPS													
EXAMPLE: 971 6 60 U 03 W RN													
Chrome Plated Bezel		Wire Leads		Red LED		Built-In 200 OHM Resistor		Short Cylindrical Lens		White Housing		Red Translucent Lens	
Series Number	Termination	Lamp Code	Resistor			Lens Type	Housing Color	Lens Color					
			Code	Current	Volts								
970 <sup>2</sup> No Bezel	6 6" Wire Leads	60 Red LED	X	Nominal 10 MA No Resistor	1.8	03 Short Cylindrical (Smooth)	W White (Standard)	Nondiffusing (Clear)					
971 Chrome Plated Bezel			U		3.6			06 Short Stovepipe (Fresnel)	CN Colorless (60,66,68) <sup>12</sup>				
972 Black Anodized Bezel	W		5.0		07 Short Cylindrical (Fluted)				WN White (60,66,68) <sup>12</sup>				
	Y		6.0						92 <sup>11</sup> Flat Cylindrical (Faceted)	AN Amber (68) <sup>12</sup>			
	K	10.0	93 Short Cylindrical (Fresnel)	GN Green (66) <sup>12</sup>									
	G	12.0		RN Red (60) <sup>12</sup>									
L	14.0												
	28.0												
973 Clear Anodized Bezel	9 .125" Q.C. Terminals	68 Yellow LED	V	Nominal 20 MA	3.6			B Black (Optional)	YN Yellow (68) <sup>12</sup>				
			M		5.0								
			P		6.0								
			Z		10.0								
			N		14.0								
			H		28.0								
974 Gold Iridite Bezel	<sup>9</sup> Use only with lens type 92. <sup>11</sup> No Bezel Required. <sup>12</sup> Lamp Code Number. When specifying lens color, Use only with lamp codes shown.												

# Product Specifications



Dimensions in inches

# Compliances and Approvals

