

WIRING CONFIGURATION

E161XXXXXXXX	BROWN ○	1
	BLUE ○	2
E162XXXXXXXX	BROWN ○	1
	BLUE ○	2
	GREEN/YELLOW ○	⊥

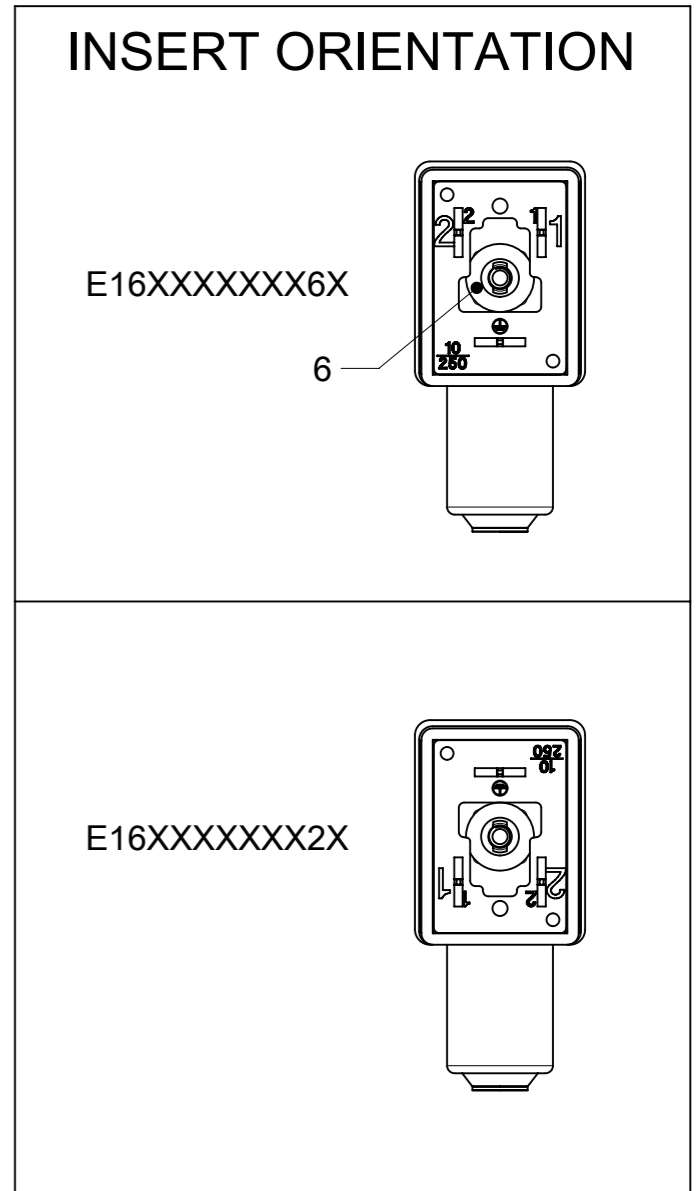


TABLE 3

Profiled Gasket	Flat Gasket	Integrated Gasket	Screw M3x25

TABLE 1

ITEM NO.	QTY	DESCRIPTION	MATERIAL	FINISH/COLOR
1	-	CABLE	SEE CABLE LIST	
2	1	POLYPROP MLD COMPOUND-SELF EX	SEE PAGE 2	
3	1	MOUNTED INSERT	-	BLACK
4	1	GASKET	SEE TABLE 3	
5	1	SCREW	SEE TABLE 3	
6	1	SPACER	PA6	BLACK

TABLE 2

TABLE OF LENGTH TOLERANCE (MM)

OVER	UPTO AND INCLUDING	TOLERANCE (+)
0	1000	±20
1000	3000	±30
3000	5000	±40
5000	10000	±50
10000	15000	±100
15000	20000	±150
20000		±LENGTH/100

THIS DRAWING CONTAINS INFORMATION THAT IS PROPRIETARY TO MOLEX ELECTRONIC TECHNOLOGIES, LLC AND SHOULD NOT BE USED WITHOUT WRITTEN PERMISSION

SYMBOLS: THIS DRAWING CONTAINS INFORMATION THAT IS PROPRIETARY TO MOLEX ELECTRONIC TECHNOLOGIES, LLC AND SHOULD NOT BE USED WITHOUT WRITTEN PERMISSION

TABLE OF DIMENSION UNITS: mm, SCALE: 1:1

GENERAL TOLERANCES (UNLESS SPECIFIED): ANGULAR TOL ± 1.0°

4 PLACES ±, 3 PLACES ±, 2 PLACES ± 0.05, 1 PLACE ± 0.3, 0 PLACES ± 0.5

DRAFT WHERE APPLICABLE MUST REMAIN WITHIN DIMENSIONS

THIRD ANGLE PROJECTION: DRAWING: A3-SIZE, SERIES: 121040, MATERIAL NUMBER: SEE PART LIST, CUSTOMER: GENERAL MARKET, SHEET NUMBER: 1 OF 3

CURRENT REV DESC: REDRAWN

EC NO: 621216
 DRWN: APAWLAK01 2019/07/24
 CHK'D: RSILLER 2019/07/29
 APPR: RSILLER 2019/07/29

INITIAL REVISION:
 DRWN: MDHARMANTI 2019/01/14
 APPR: RSILLER 2019/02/01

molex

MPM E16XXXXXXXXXX

PRODUCT CUSTOMER DRAWING

DOCUMENT NUMBER: 1210400254, DOC TYPE: PSD, DOC PART: 000, REVISION: A1

PART No. MATRIX

E 1 6 X X X X X X X X X

PACKING WITHOUT BAG

NUMBER OF WIRES:
1-2 WIRES
2-2 WIRES+GROUND

CABLE TYPE:
SEE CABLE INFORMATION

CABLE CROSS SECTION AREA:
SEE CABLE INFORMATION

HEAD COLOUR:
* G-GREY
* N-BLACK
* A-UL BLACK (ONLY WITH UL LISTED CABLE)

CABLE LENGTH IN CM:
* 050-50 CM
* 300-300 CM
* 10K-1000 CM

EARTH PIN LOCATION (SEE INSERT ORIENTATION TABLE):
2- EARTH ON H12
6- EARTH ON H6

GASKET SCREWS:
1-NBR PROFILE GASKET+FIXING SCREWS (M3x25 mm)
2-NBR FLAT GASKET+SCREW (M3x25 mm)
3-SILICONE PROFILE GASKET+SCREWS (M3x25 mm)
4-SILICONE FLAT GASKET+SCREW (M3x25 mm)
P-INTIGRATED GASKET+FIXING SCREW+GROMMET (M3x27 mm)
R-INTIGRATED GASKET+SCREW+GROMMET (M3x27 mm)
T-PROFILE GASKET+SCREW+GROMMET (M3x27 mm)


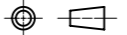
PART LIST

MOLEX P/N	ENGINEERING No.	LENGTH (MM)
1210400254	E162I2N20061	2000
*1210400255	E162I2N50021	5000
1210400263	E162I4N20061	2000
1210400269	E162I4N50061	5000
*1210400271	E162N2N10021	1000
*1210400272	E162N2N10K21	10000
*1210400273	E162N2N20021	2000
*1210400276	E162N2N30021	3000
1210400277	E162N2N30061	3000
*1210400278	E162N2N50021	5000
1210400283	E162N3N03061	300
*1210400284	E162N3N03521	350
*1210400286	E162N3N05021	500
1210400288	E162N3N05061	500
*1210400295	E162N3N10021	1000
*1210400296	E162N3N10022	1000
1210400297	E162N3N10061	1000
*1210400299	E162N3N10K21	10000
*1210400301	E162N3N15021	1500
1210400303	E162N3N15061	1500

MOLEX P/N	ENGINEERING No.	LENGTH (MM)
*1210400305	E162N3N20021	2000
1210400307	E162N3N20061	2000
*1210400308	E162N3N25021	2500
1210400310	E162N3N25061	2500
*1210400311	E162N3N30021	3000
*1210400312	E162N3N30022	3000
1210400313	E162N3N30061	3000
1210400319	E162N3N40061	4000
*1210400320	E162N3N50021	5000
1210400322	E162N3N50061	5000
*1210400581	E162I2N30021	3000
1210400625	E161N2N10021	1000
1210400654	E162I2N30061	3000
*1210400657	E162P3N20021	2000
*1210400711	E162R3N30021	3000
*1210400778	E162I2N10022	1000
1210400820	E162N3N1006P	1000
1210400821	E162N3N3006P	3000
1210400822	E162N3N5006P	5000

CABLE INFORMATION

CABLE TYPE	CABLE C/S	CABLE JACKET	TEMPERATURE RANGE (STATIC)	BENDING RADIUS	
				STATIC	DYNAMIC
A2	20AWG	PVC UL 2661	-15° TO +105°	>10X OD	>15X OD
A3	18 AWG	PVC UL 2661	-15° TO +105°	>10X OD	>15X OD
B2	20AWG	PUR UL 20668	-40° TO +90°	>5X OD	>10X OD
B3	18 AWG	PUR UL 20668	-40° TO 90°	>5X OD	>10X OD
I2	0.5 mm ²	PVC CEI 2022 II	-25° TO +70°	>10X OD	>15X OD
I4	1 mm ²	PVC CEI 2022 II	-25° TO +70°	>10X OD	>15X OD
N2	0.5 mm ²	PVC H03	-20° TO +70°	>3X OD	NA
N3	0.75 mm ²	PVC H05	-20° TO +70°	>9X OD	NA
N4	1 mm ²	PVC H05	-20° TO +70°	>9X OD	NA
P2	0.5 mm ²	PUR-BLEND	-40° TO +90°	>7.5X OD	>12.5X OD
P3	0.75 mm ²	PUR-BLEND	-40° TO +90°	>7.5X OD	>12.5X OD
R3	0.75 mm ²	TPR	-40° TO +130°	-	
R4	1 mm ²	TPR	-40° TO +130°	-	
W3	0.75 mm ²	PE	-40°C TO 90°C	-	>5X OD

SYMBOLS	THIS DRAWING CONTAINS INFORMATION THAT IS PROPRIETARY TO MOLEX ELECTRONIC TECHNOLOGIES, LLC AND SHOULD NOT BE USED WITHOUT WRITTEN PERMISSION		CURRENT REV DESC: REDRAWN	
	EC NO: 621216 DRWN: APAWLAK01 2019/07/24 CHK'D: RSILLER 2019/07/29 APPR: RSILLER 2019/07/29			
▽ = 0	mm	SCALE 1:1	INITIAL REVISION:	DOCUMENT NUMBER
▽ = 0	GENERAL TOLERANCES (UNLESS SPECIFIED)			
▽ = 0	ANGULAR TOL ± 1.0°	THIRD ANGLE PROJECTION	APPR: RSILLER 2019/02/01	DOC PART
▽ = 0	4 PLACES ±		DRWN: MDHARMANTI 2019/01/14	REVISION
▽ = 0	3 PLACES ±	DRAWING	APPR: RSILLER 2019/02/01	1210400254
▽ = 0	2 PLACES ± 0.05		SERIES	PSD
▽ = 0	1 PLACE ± 0.3	A3-SIZE	MATERIAL NUMBER	000
▽ = 0	0 PLACES ± 0.5		CUSTOMER	A1
□ = 0	DRAFT WHERE APPLICABLE MUST REMAIN WITHIN DIMENSIONS		SEE PART LIST	GENERAL MARKET
▽ = 0			SHEET NUMBER	2 OF 3

PART LIST

MOLEX P/N	ENGINEERING No.	LENGTH (MM)
1210400823	E162P3N1006P	1000
1210400824	E162P3N3006P	3000
1210400825	E162P3N5006P	5000
*1210400832	E162N2N1002P	1000
*1210400840	E162N3N75021	7500
*1210400842	E162N3N13K21	13000
*1210400843	E162N3N15K21	15000
*1210400869	E161N2N10K21	10000
*1210400876	E162N2N05021	500
1210400891	E162I2N50061	5000
*1210400903	E162N4N20021	2000
*1210400904	E162I2N20021	2000
1210400915	E162N3N06062	600
*1210400919	E162P2N30021	3000
*1210400920	E162A2A1002R	1000
*1210400927	E162N3N20023	2000
*1210400934	E162I4N50021	5000
1210400935	E161N3N50061	5000
*1210400936	E162P3N5002P	5000
1210400963	E162I4N50062	5000
1210400964	E162I4N10K62	10000
*1210400977	E162N4N50021	5000
1210400985	E161I2N15021	1500
1210401000	E161N2N07021	700
1210401003	E161N2N1002P	1000

MOLEX P/N	ENGINEERING No.	LENGTH (MM)
*1210401015	E162P3N30021	3000
*1210401016	E162P3N50021	5000
1210401133	E161N3N20022	2000
*1210401136	E162A3A20K2R	20000
1210401148	E162P2N06061	600
1210401149	E162P2N20061	2000
1210401150	E162N2N0506R	500
1210401152	E162P2N04061	400
1210401200	E162N2N50061	5000
1210401203	E162P3N1506P	1500
*1210401284	E162N4N10021	1000
*1210401285	E162N4N30021	3000
*1210401287	E162N3N2002P	2000
1210401310	E162N2N10061	1000
1210401311	E162I2N10061	1000
*1210401312	E162I2N10021	1000
1210401313	E162A2A10061	1000
*1210401314	E162A2A10021	1000
1210401315	E162A2A30061	3000
*1210401316	E162A2A30021	3000
1210401317	E162A2A50061	5000
*1210401318	E162A2A50021	5000
*1210401337	E162B2A50021	5000
*1210401356	E162R4N3002P	3000

MOLEX P/N	ENGINEERING No.	LENGTH (MM)
1210401366	E162N2N05061	500
1210401395	E162N2N20061	2000
1210401405	E162P3N50061	5000
*1210401411	E162N3N05521	550
*1210401413	E162I2N15061	1500
1210401431	E161N3N1002P	1000
1210401432	E161N3N1006P	1000
*1210401458	E162N2N07221	720
*1210401459	E162N2N15021	1500
1210401480	E162B3A3002P	3000
1210401501	E161N3N0606P	600
1210401502	E161N3N0756P	750
1210401512	E161N2N3002P	3000
*2210400001	E162W3A30021	3000

NOTES:

- *-INDICATES SPACER USED IN THE ASSEMBLY.
- \$-INDICATES CABLE-TIE USED IN THE ASSEMBLY.
- LABEL-USED IN P/N 1210401315, 1210401317 & 1210401318.

TECHNICAL DATA:

ELECTRICAL:

CURRENT MAX. : 5.0A

VOLTAGE: 250V

CONTACT RESISTANCE: ≤15 mOhm MAX.

ENVIRONMENTAL:

OPERATING TEMPERATURE:

NITRILE RUBBER (NBR) GASKET: -40°C TO +90°C

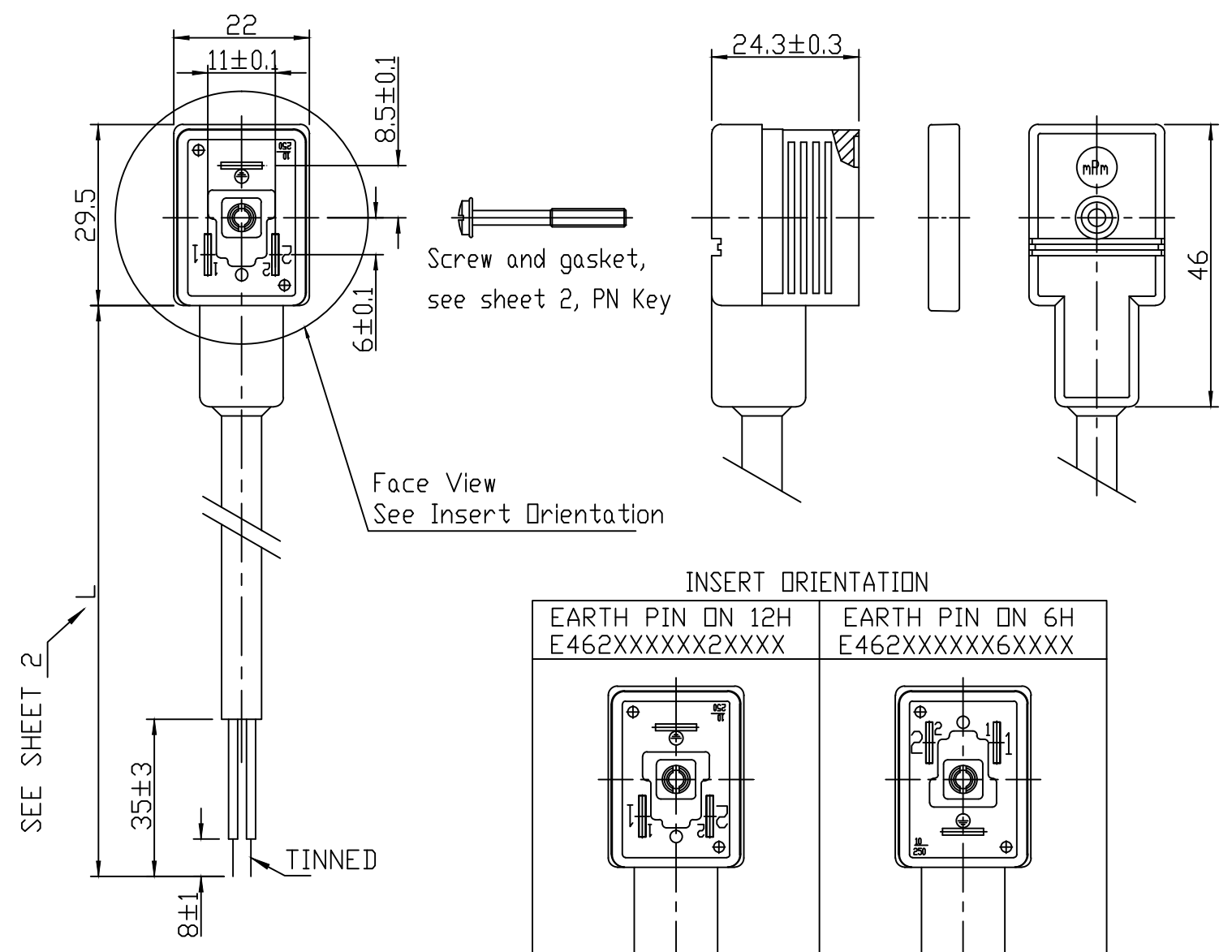
SILICONE GASKET: -40°C TO +125°C

PROTECTION: IP65

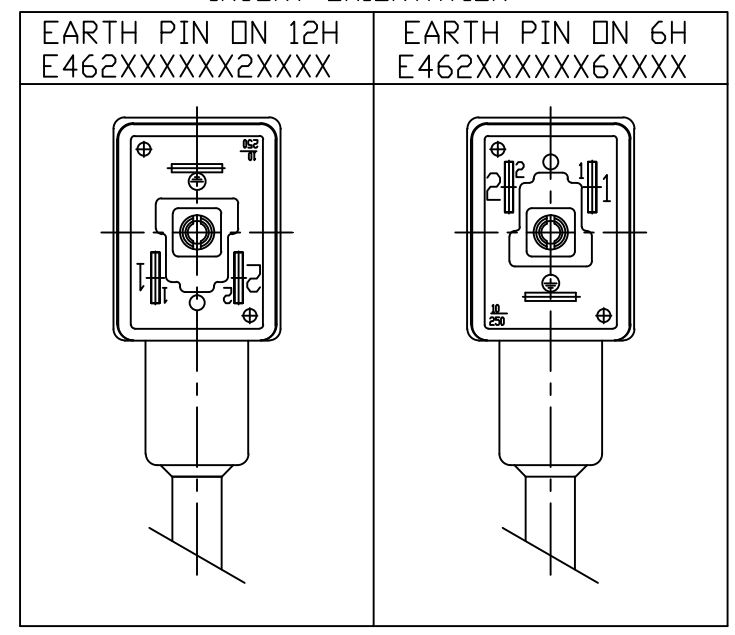
SYMBOLS	THIS DRAWING CONTAINS INFORMATION THAT IS PROPRIETARY TO MOLEX ELECTRONIC TECHNOLOGIES, LLC AND SHOULD NOT BE USED WITHOUT WRITTEN PERMISSION		
	DIMENSION UNITS	SCALE	CURRENT REV DESC: REDRAWN
▽ = 0	mm	1:1	molex
▽ = 0	GENERAL TOLERANCES (UNLESS SPECIFIED)		
▽ = 0	ANGULAR TOL ± 1.0°		MPM E16XXXXXXXXXX
▽ = 0	4 PLACES ±	EC NO: 621216	
▽ = 0	3 PLACES ±	DRWN: APAWLAK01 2019/07/24	
▽ = 0	2 PLACES ± 0.05	CHK'D: RSILLER 2019/07/29	
▽ = 0	1 PLACE ± 0.3	APPR: RSILLER 2019/07/29	
▽ = 0	0 PLACES ± 0.5	INITIAL REVISION:	
■ = 0	DRAFT WHERE APPLICABLE MUST REMAIN WITHIN DIMENSIONS		DRWN: MDHARMANTI 2019/01/14
▽ = 0	THIRD ANGLE PROJECTION		APPR: RSILLER 2019/02/01
		DRAWING	DOCUMENT NUMBER
		SERIES	DOC TYPE
		MATERIAL NUMBER	DOC PART
		CUSTOMER	REVISION
		A3-SIZE	1210400254
		121040	PSD
		SEE PART LIST	000
		GENERAL MARKET	A1
		3 OF 3	

WIRING CONFIGURATION

E161XXXXXXXXX	Brown (or BK1)		1
	Blue (or BK2)		2
	Not Used		≡
E162XXXXXXXXX	Brown (or BK1)		1
	Blue (or BK2)		2
	Green/Yellow (or BK3)		≡



INSERT ORIENTATION

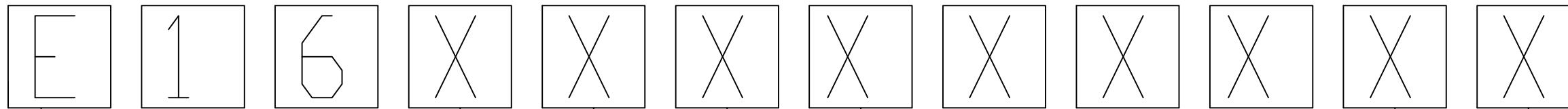


NOTE: DRAWING UPDATED TO AUTOCAD AT REV C

Over	Up to and including	Tolerance(+)
0	1000	±20
1000	3000	±30
3000	5000	±40
5000	10000	±50
10000	15000	±100
15000	20000	±150
20000		±L/100

Cable	See sheet 2 & 3
Wiring	SEE ELECTRIC DIAGRAM
Material, contact holder colour	PA66 + 25%G UL94-V0 - Black
Material and overmould colour	See sheet 2
Voltage / Current	250V / 5A
Contact resistance	4 mohm
Protection grade	See sheet 2: IP65 EN 60529 or IP67 EN 60529
Insulating class	VDE 0110 1/89 2.5 KV/3

ADDED PN, AUTOCAD EC NO: IPG2018-0429 DRWN: CCHRASKT 2018/03/14 CHKD: RSTONE 2018/03/15 APPR: BWOODMAN	QUALITY SYMBOLS 	GENERAL TOLERANCES (UNLESS SPECIFIED)		DIMENSION STYLE MM		SCALE NTS	DESIGN UNITS METRIC	THIRD ANGLE PROJECTION		
		4 PLACES	±---	±---	DRAWN BY	DATE	TITLE E16XXXXXXXXXX DIN FORM INDUSTRIAL			
		3 PLACES	±---	±---	CCHRASKT	2018/03/14				
		2 PLACES	±---	±---	CHECKED BY	DATE	MOLEX INCORPORATED			
1 PLACE	±---	±---	MSZWAJKO	2013/02/05						
ANGULAR ±---°		DRAFT WHERE APPLICABLE MUST REMAIN WITHIN DIMENSIONS		APPROVED BY DATE		MATERIAL NO.		DOCUMENT NO.		
				SEE SHEET 2		SD-121040-008		SHEET NO. 1 OF 4		
SIZE B		THIS DRAWING CONTAINS INFORMATION THAT IS PROPRIETARY TO MOLEX INCORPORATED AND SHOULD NOT BE USED WITHOUT WRITTEN PERMISSION								



E - Packing without bags
 W - Single packing
 Q - Quick packing

NUMBER OF WIRES:
 1=2 WIRES
 2=2 WIRES + EARTH

CABLE TYPE
 SEE SHEET 3 - TABLE 1

CABLE CROSS SECTION AREA
 SEE SHEET 3 - SEE TABLE 2

HEAD COLOUR:
 G=GREY;
 N=BLACK; Polpropylene self extinguishing V2
 T=TRANSPARENT;
 A=CSA-UL BLACK;
 B=CSA-UL GREY.

DLUGOSC KABLA W CM/CABLE LENGHT IN CM
 NP:050=50 CM, 300=300 CM.

EARTH PIN LOCATION (SEE INSERT ORIENTATION TABLE):
 2=EARTH PIN ON 12H,
 6=EARTH PIN ON 6H.
 TYPE OF GASKET AND SCREW:

- 1=NBR PROFILE GASKET + FIXING SCREWS (M3x25 mm).
- 2=NBR FLAT GASKET + FIXING SCREW (M3x25 mm).
- 3=SILICONE PROFILE GASKET + FIXING SCREW (M3x25 mm).
- 4=SILICON FLAT GASKET + FIXING SCREW (M3x25 mm).
- P=INTEGRATED GASKET ASSEMBLED + FIXING SCREW WITH GROMMET ASSEMBLED ON CONNECTOR (M3x27 mm).
- R=INTAGRATED GASKET + FIXING SCREW + GROMMET (M3x27 mm).
- T=PROFILE GASKET + FIXING SCREW + GROMMET (M3x27 mm).

ADDED PN, AUTOCAD EC NO: IPG2018-0429 DRWN: CCHRSTK 2018/03/14 CHKD: RSTONE 2018/03/15 APPR: BWOODMAN	DESCRIPTION REV	QUALITY SYMBOLS	GENERAL TOLERANCES (UNLESS SPECIFIED)		DIMENSION STYLE		SCALE	DESIGN UNITS	THIRD ANGLE PROJECTION	
		$\nabla = 0$ $\sphericalangle = 0$	mm	INCH	MM	NTS	METRIC			
		4 PLACES ±--- ±--- 3 PLACES ±--- ±--- 2 PLACES ±--- ±--- 1 PLACE ±--- ±--- ANGULAR ±---°	DRAWN BY	DATE	TITLE					
		DRAFT WHERE APPLICABLE MUST REMAIN WITHIN DIMENSIONS	CCHRSTK	2018/03/14	E16XXXXXXXXXX DIN FORM INDUSTRIAL	MOLEX INCORPORATED				
C	REV	APPROVED BY	DATE	MATERIAL NO.	DOCUMENT NO.	SHEET NO.				
		---	---	SEE SHEET 2	SD-121040-008	2 OF 4				
THIS DRAWING CONTAINS INFORMATION THAT IS PROPRIETARY TO MOLEX INCORPORATED AND SHOULD NOT BE USED WITHOUT WRITTEN PERMISSION										

TABLE 2 - CABLES									
MOLEX PN	MPM	CODE	WIRES	CROSS SECTION	MATERIAL	COLOR	DIAMETERØ	DIN A-B	DIN C
1210180080	I	0	3	1 MM 2	PVC CEI 2022 II O.R.	GREY RAL7035	6.4±0.2 MM	OK	-
1210180467	A	2	2	20 AWG	PVC CSA/UL 2661	BLACK	5.4±0.2 MM	OK	OK
1210180128	A	2	3	20 AWG	PVC CSA/UL 2661	BLACK	5.6±0.2 MM	OK	OK
1210180394	A	2	4	20 AWG	PVC CSA/UL 2661	BLACK	6.2±0.25 MM	OK	OK
-	A	2	5	20 AWG	PVC CSA/UL 2661	BLACK	7±0.2 MM	OK	-
1210180297	B	2	2	20 AWG	PUR CSA/UL 20668	BLACK	5.6±0.2 MM	OK	OK
1210180126	B	2	3	20 AWG	PUR CSA/UL 20668	BLACK	5.6±0.2 MM	OK	OK
1210180387	B	2	4	20 AWG	PUR CSA/UL 20668	BLACK	6.2±0.2 MM	OK	OK
-	B	2	5	20 AWG	PUR CSA/UL 20668	BLACK	7±0.2 MM	OK	-
1210180122	D	2	3	0.5 MM2	PVC TI2 CEI 20-20	GREY	5.5±0.2 MM	OK	OK
-	F	2	3	0.5 MM2	CNOMO	GREY RAL7000	5.5±0.2 MM	OK	OK
1210180047	I	2	2	0.5 MM2	PVC CEI 2022 II O.R.	GREY RAL7035	5.5+0.3 /-0 MM	OK	OK
1210180284	I	2	3	0.5 MM2	PVC CEI 2022 II O.R.	GREY RAL7035	5.5+0.3 /-0 MM	OK	OK
1210180146	I	2	4	0.5 MM2	PVC CEI 2022 II O.R.	GREY RAL7035	6.5±0.2 MM	OK	OK
1210180177	I	2	5	0.5 MM2	PVC CEI 2022 II O.R.	GREY RAL7035	7±0.2 MM	OK	-
1210180022	N	2	2	0.5 MM2	PVCH03	BLACK	5.2±0.2 MM	OK	OK
1202092753	N	2	3	0.5 MM2	PVCH03	BLACK	5.5±0.2 MM	OK	OK
1210180153	N	2	4	0.5 MM2	PVCH03	BLACK	6.9 MM MAX	OK	OK
1210180046	P	2	2	0.5 MM2	PUR-BLEND	BLACK	5.5±0.2 MM	OK	OK
1202092439	P	2	3	0.5 MM2	PUR-BLEND	BLACK	5.5+0.3 /-0 MM	OK	OK
1210180302	P	2	4	0.5 MM2	PUR-BLEND	BLACK	6.5±0.2 MM	OK	OK
1202092215	P	2	5	0.5 MM2	PUR-BLEND	BLACK	7+0.3 /-0.1 MM	OK	OK
1210180409	A	3	2	18 AWG	PVC CSA/UL 2661	BLACK	6.5±0.25 MM	OK	-
1210180129	A	3	3	18 AWG	PVC CSA/UL 2661	BLACK	6.5±0.25 MM	OK	-
1210180159	A	3	4	18 AWG	PVC CSA/UL 2661	BLACK	7±0.3 MM	OK	-
1210180464	A	3	5	18 AWG	PVC CSA/UL 2661	BLACK	7.8±0.25 MM	OK	-

TABLE 1 - CABLE TYPES			
CODE	CABLE TYPES	FEATURES	STRANDING
N	PVC	APPLICATION GENERAL PURPOSE CABLE WHICH HAS GOOD RESISTANCE TO WATER, BUT USUALLY POOR OIL RESISTANCE.	0.5 MM2 = 15 X 0.20 0.75 MM2 = 21 X 0.20 1 MM2 = 28 X 0.20
I	CEI	APPROVED TO IEC 332-2A, FLAME RETARDANT AND SELF EXTINGUISHING. LIMITED RESISTANCE TO MINERAL OILS.	0.5 MM2 = 28 X 0.15 0.75 MM2 = 42 X 0.15 1 MM2 = 32 X 0.20
P	PUR	OFFER GOOD RESISTANCE TO OIL AND CHEMICALS. CAN SWELL WHEN CONSTANTLY IMMERSSED IN WATER.	0.5 MM2 = 28 X 0.15 0.75 MM2 = 42 X 0.15 1 MM2 = 32 X 0.20
A	PVC CSA-UL	APPROVED TO CSA-UL 2661, APPLICATION GENERAL PURPOSE CABLE WHICH HAS GOOD RESISTANCE TO WATER, BUT USUALLY POOR OIL RESISTANCE.	20 AWG = 32 X 0.15 18 AWG = 52 X 0.15
B	PUR CSA-UL	APPROVED TO CSA-UL 20668, VERY GOOD RESISTANCE TO OIL AND CHEMICALS.	20 AWG = 32 X 0.15 18 AWG = 52 X 0.15

TABLE 2 CONTD										
MOLEX PN	MPM	CODE	WIRES	CROSS SECTION	MATERIAL	COLOR	DIAMETERØ	DIN A-B	DIN C	
1210180351	B	3	2	18 AWG	PUR CSA/UL 20668	BLACK	6.8±0.2 MM	OK	-	
1210180127	B	3	3	18 AWG	PUR CSA/UL 20668	BLACK	6.5±0.2 MM	OK	-	
1210180160	B	3	4	18 AWG	PUR CSA/UL 20668	BLACK	7±0.2 MM	OK	-	
1210180463	B	3	5	18 AWG	PUR CSA/UL 20668	BLACK	7.8±0.2 MM	OK	-	
1210180073	D	3	3	0.75 MM2	PVC TI2 CEI 20-20	GREY	6.5±0.2 MM	OK	OK	
1210180145	D	3	4	0.75 MM2	PVC TI2 CEI 20-20	GREY	7.1±0.2 MM	OK	-	
1202098206	I	3	2	0.75 MM2	PVC CEI 2022 II O.R.	GREY RAL7001	5.5±0.2 MM	OK	-	
1210180120	I	3	3	0.75 MM2	PVC CEI 2022 II O.R.	GREY RAL7035	6±0.2 MM	OK	-	
1210180143	I	3	4	0.75 MM2	PVC CEI 2022 II O.R.	GREY RAL7035	7±0.2 MM	OK	-	
1210180032	N	3	2	0.75 MM2	PVCH05	BLACK	6.2±0.2 MM	OK	-	
1210180069	N	3	3	0.75 MM2	PVCH05	BLACK	6.5±0.2 MM	OK	-	
1210180144	N	3	4	0.75 MM2	PVCH05	BLACK	7.1±0.2 MM	OK	-	
1210180174	N	3	5	0.75 MM2	PVCH05	BLACK	8.0+0.2-0 MM	OK	-	
1202094190	P	3	2	0.75 MM2	PUR-BLEND	BLACK	6.5±0.2 MM	OK	-	
1210180071	P	3	3	0.75 MM2	PUR-BLEND	BLACK	6.5±0.2 MM	OK	-	
1210180152	P	3	4	0.75 MM2	PUR-BLEND	BLACK	7±0.2 MM	OK	-	
1210180384	R	3	3	0.75 MM2	TPR HAL. FREE	BLACK	6.5±0.2 MM	OK	-	
1210180094	T	3	3	0.75 MM2	PUR CSA/UL	YELLOW	6.5±0.2 MM	OK	-	
1210180309	Y	3	3	0.75 MM2	SIL/0300	RED	6.5±0.2 MM	OK	-	
1210180081	F	4	3	1 MM2	CNOMO	GREY RAL7000	7.1+0.2 /-0 MM	OK	-	
-	F	4	4	1 MM2	CNOMO	GREY RAL7000	7.1+0.2 /-0 MM	OK	-	
1210180042	I	4	2	1 MM2	PVC CEI 2022 II O.R.	GREY RAL7035	7.1+0.2 /-0 MM	OK	-	
1210180079	I	4	3	1 MM2	PVC CEI 2022 II O.R.	GREY RAL7035	7.1+0.2 /-0 MM	OK	-	
1210180036	N	4	2	1 MM2	PVCH05	BLACK	6.5±0.2 MM	OK	-	
1210180082	N	4	3	1 MM2	PVCH05	BLACK	6.9±0.2 MM	OK	-	
1210180117	R	4	3	1 MM2	TPR HAL. FREE	BLACK	7.1±0.2 MM	OK	-	
1210180085	N	5	3	1.5 MM2	PVCH05	BLACK	8.3+0.2 /-0 MM	OK	-	
1210180313	I	6	2	0.35 MM2	PVC CEI 2022 II O.R.	GREY RAL7035	4.8±0.2 MM	OK	-	
-	A	7	3	20 AWG	PVC CSA/UL 2661	YELLOW	5.6±0.2 MM	OK	OK	
1210180149	I	9	4	0.75 MM2	PVC CEI 2022 II O.R.	GREY RAL7035	7.3±0.2 MM	OK	-	

ADDED PN, AUTOCAD EC NO: IPG2018-0429 DRWN: CCHRASKT 2018/03/14 CHKD: RSTONE 2018/03/15 APPR: BWOODMAN	DESCRIPTION REV	QUALITY SYMBOLS 	GENERAL TOLERANCES (UNLESS SPECIFIED)		DIMENSION STYLE MM		SCALE NTS	DESIGN UNITS METRIC	THIRD ANGLE PROJECTION	
		= 0 = 0	mm INCH	DRAWN BY DATE CCHRASKT 2018/03/14		TITLE E16XXXXXXXXXX DIN FORM INDUSTRIAL				
		4 PLACES ±--- ±--- 3 PLACES ±--- ±--- 2 PLACES ±--- ±--- 1 PLACE ±--- ±---	ANGULAR ±---°	CHECKED BY DATE MSZWJKO 2013/02/05		MOLEX INCORPORATED				
		DRAFT WHERE APPLICABLE MUST REMAIN WITHIN DIMENSIONS	MATERIAL NO. SEE SHEET 2	DOCUMENT NO. SD-121040-008		SHEET NO. 3 OF 4				

THIS DRAWING CONTAINS INFORMATION THAT IS PROPRIETARY TO MOLEX INCORPORATED AND SHOULD NOT BE USED WITHOUT WRITTEN PERMISSION

10 9 8 7 6 5 4 3 2 1

F

F

E

E

D

D

C

C

B

B

A

A

PART LIST	
1210400295	E162N3N10021
1210400297	E162N3N10061
1210400820	E162N3N1006P

©

ADDED PN, AUTOCAD EC NO: IPG2018-0429 DRWN: CCHRSTK 2018/03/14 CHKD: RSTONE 2018/03/15 APPR: BWOODMAN	DESCRIPTION REV	QUALITY SYMBOLS	GENERAL TOLERANCES (UNLESS SPECIFIED)		DIMENSION STYLE		SCALE	DESIGN UNITS	THIRD ANGLE PROJECTION			
		$\nabla = 0$ $\sphericalangle = 0$	mm	INCH	MM	NTS	METRIC	TITLE E16XXXXXXXXXX DIN FORM INDUSTRIAL ---- MOLEX INCORPORATED				
		4 PLACES ±--- ±--- 3 PLACES ±--- ±--- 2 PLACES ±--- ±--- 1 PLACE ±--- ±--- ANGULAR ±---°	DRAFT WHERE APPLICABLE MUST REMAIN WITHIN DIMENSIONS		DRAWN BY DATE CCHRSTK 2018/03/14 CHECKED BY DATE MSZWAJKO 2013/02/05 APPROVED BY DATE ----	MATERIAL NO. SEE SHEET 2		DOCUMENT NO. SD-121040-008		SHEET NO. 4 OF 4		
		C	SIZE B		THIS DRAWING CONTAINS INFORMATION THAT IS PROPRIETARY TO MOLEX INCORPORATED AND SHOULD NOT BE USED WITHOUT WRITTEN PERMISSION							

10 9 8 7 6 5 4 3 2 1