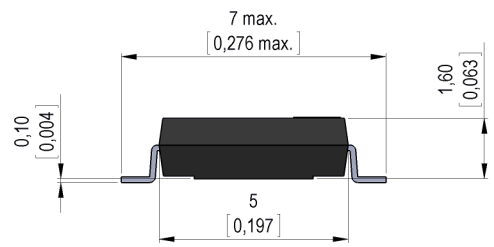
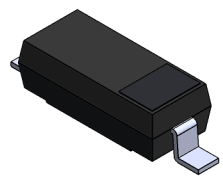


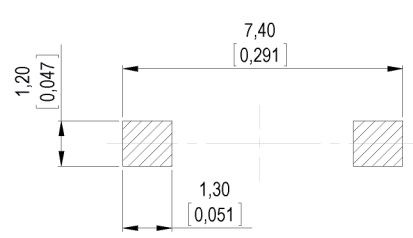
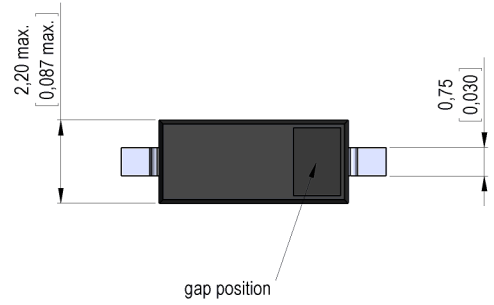
Dimensions mm[inch]
tolerances according to DIN ISO 2768-m
Toleranzen gem. DIN ISO 2768-m



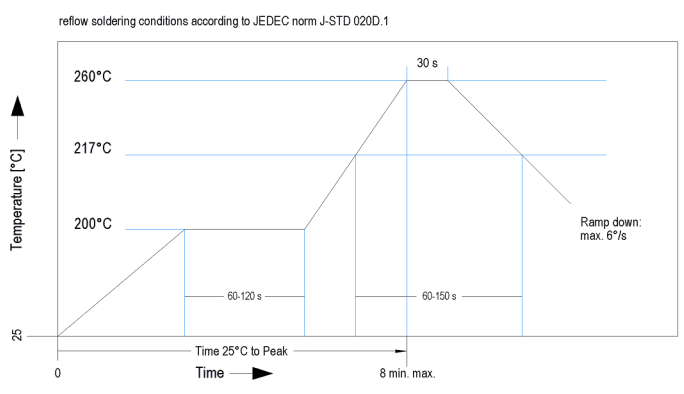
Isometric
Scale 5:1
Maßstab 5:1



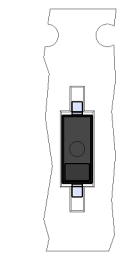
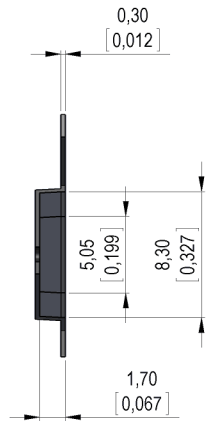
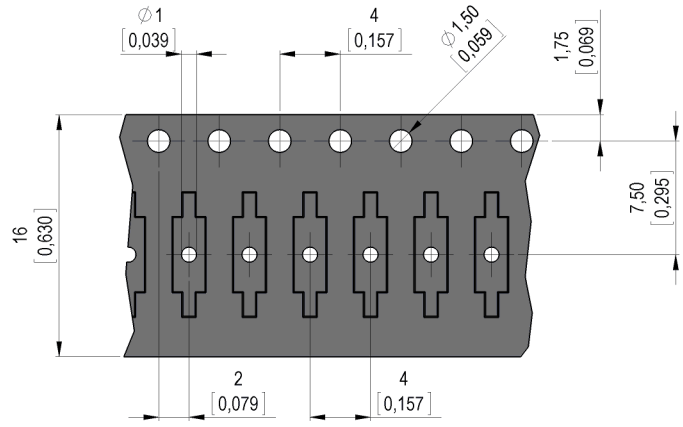
Recommended PCB Pad Layout



Solder Reflow Profile



Packaging



Gap position opposite to the sprocket holes.



Europe: +49 / 7731 8399 0 | Email: info@meder.com
 USA: +1 / 508 295 0771 | Email: salesusa@meder.com
 Asia: +852 / 2955 1682 | Email: salesasia@meder.com

Item No.:
9240000020
 Item:
MK24-A-2

Products for tomorrow...

Magnetic properties	Conditions	Min	Typ	Max	Unit
Pull-In excitation (modified contact)	Reed switch modified phys. conditioned tolerance of +/- 1 AT	22		55	AT
Test equipment	Testing 100%	KMS11+AP74			
Pull-In in milliTesla (modified contact)	MS150 - phys. caused tolerance +/- 0,1mT	1,8		4,5	mT

Contact data 04	Conditions	Min	Typ	Max	Unit
Contact rating (< 10 AT)	Any DC combination of V & A not to exceed their individual max.'s			1	W
Switching voltage	DC or Peak AC			30	V
Switching current (< 10 AT)	DC or Peak AC			0,1	A
Carry current (< 10 AT)	DC or Peak AC			0,3	A
Contact resistance static(<10AT)	Measured with 40% overdrive Start value			250	mOhm
Insulation resistance	RH <45 %, 100 V test voltage	10			GOhm
Breakdown voltage (< 10 AT)	according to IEC 255-5	60			VDC
Operate time incl. bounce (<10AT)	measured with 40% overdrive			0,25	ms
Release time	measured with no coil excitation			0,15	ms
Capacity	@ 10 kHz across open switch		0,1		pF

Special Product Data	Conditions	Min	Typ	Max	Unit
Reach / RoHS conformity			yes		

Environmental data	Conditions	Min	Typ	Max	Unit
Shock	1/2 sine, duration 11ms, in 3 axis			15	g
Vibration	from 10 - 2000 Hz			10	g
Operating temperature		-40		115	°C
Storage temperature		-55		115	°C
Soldering Temperature Tsold	Reflow according IPC/JEDEC J-STD-020C			260	°C
Washability		fully sealed			

General data	Conditions	Min	Typ	Max	Unit
Remark		Pick & place force should not exceed 25cN!			
Packaging		T&R per 2000 pcs. / Tray H20			

Modifications in the sense of technical progress are reserved

Designed at: 01.07.09 Designed by: THAUKE
 Last Change at: 12.07.12 Last Change by: THAUKE

Approval at: 22.02.11 Approval by: JHEYDER
 Approval at: 23.07.12 Approval by: AWEBER

Version: 7