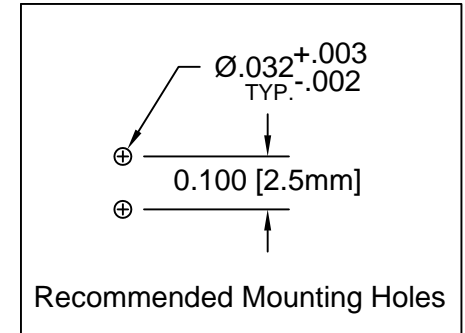
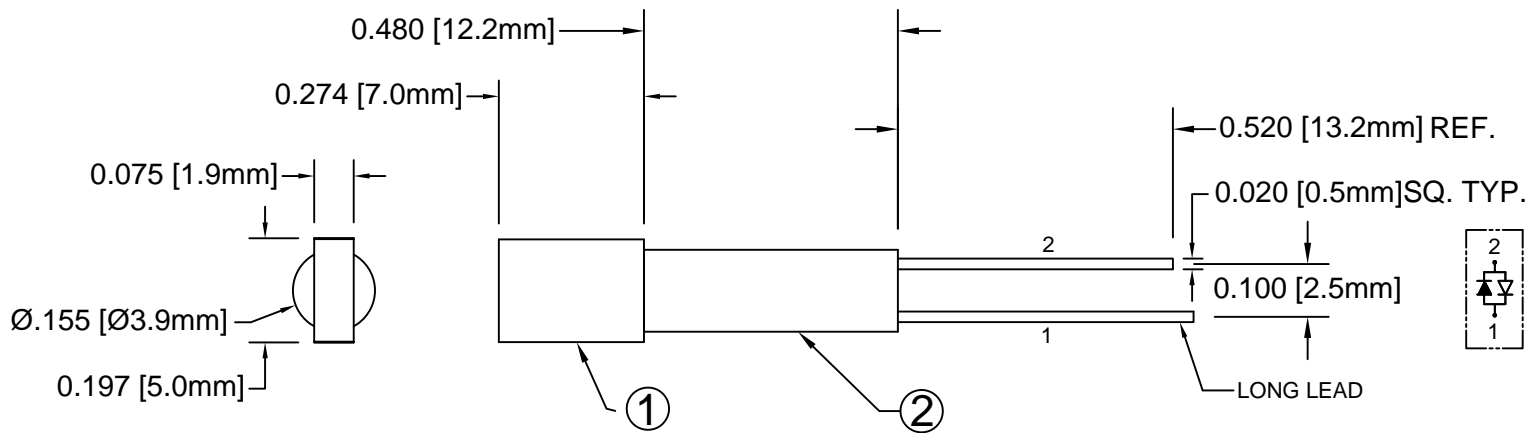


ITEM	Q'TY	PART NUMBER	PART DESCRIPTION
1	1	R5BC	2 x 5mm Rectangular LED
2	1	ELM 5-480	Extruded, Self-Retaining Narrow LED Spacer

REV.	DESCRIPTION	DATE	APPROVED
A	Engineering Release	04/02/10	T. Y.
B	LED Lens Appearance Update	04/14/10	T. Y.
C	Engineering Update w/o Changes	05/25/16	J. C.



(1) Cathode	(2) Cathode
Green	Red

Chip			Lens Appearance	Absolute Max. Ratings			Electro-Optical Data @ 20mA			Viewing Angle 2 $\theta$ 1/2 (Deg)
Emitted Color	Peak Wave Length $\lambda_p$ (nm)	Material		Pd (mW)	If (mA)	Peak If(mA)	Vf (V)		Iv (mcd)	
							TYP	MAX	TYP	
RED	625	GaAsP/GaP	WHITE DIFFUSED	80	30	150	2.0	2.8	4	120
GREEN	568	GaP/GaP		80	30	150	2.1	2.8	3	

### ABSOLUTE MAXIMUM RATINGS (Ta=25°C)

REVERSE VOLTAGE \_\_\_\_\_ 5V  
 REVERSE CURRENT \_\_\_\_\_ 100 $\mu$ A  
 OPERATING TEMPERATURE RANGE \_\_\_\_\_ -25°C - 85°C  
 STORAGE TEMPERATURE \_\_\_\_\_ -30°C - 100°C  
 LEAD SOLDERING TEMPERATURE(1/16" FROM BODY) \_\_\_\_\_ 260°C FOR 5 SECONDS

STANDARD TOLERANCE (UNLESS OTHERWISE SPECIFIED)		 4 THOMAS, IRVINE, CA. 92618 TEL: (949) 951-8808 FAX: (949) 951-3974	
DECIMALS	ANGULAR		
.X $\pm$ .1	X° $\pm$ 1°		<b>TITLE:</b> EXTRUDED VERTICAL RCT 2X5 LED NARROW SPACER PROFILE ASSY
.XX $\pm$ .02			
.XXX $\pm$ .010		DESIGNED: <b>R. Paje</b>	DATE: <b>04/02/10</b>
		CHECKED: <b>T. Yin</b>	DATE: <b>04/02/10</b>
		PART NO: <b>ELM5480R5BC</b>	
		REVISION: <b>C</b>	
		CAGE CODE : <b>32559</b> SHEET # <b>1</b> OF <b>1</b>	
CAD GENERATED DOCUMENT. DO NOT MEASURE DRAWING.			