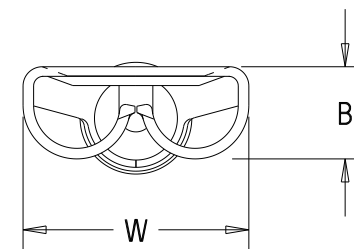


Part number	Tab size	Wire range AWG	Dimensions in.		
			A $\begin{smallmatrix} +/- .03 \\ (.8) \end{smallmatrix}$	B $\begin{smallmatrix} +/- .01 \\ (.3) \end{smallmatrix}$	W $\begin{smallmatrix} +/- .01 \\ (.3) \end{smallmatrix}$
D18-250	.250 X .032 (6.3 X 0.8)	22-18	.66 (16.8)	.12 (3.0)	.30 (7.6)
*D14-250	.250 X .032 (6.3 X 0.8)	16-14	.66 (16.8)	.12 (3.0)	.30 (7.6)
D10-250	.250 X .032 (6.3 X 0.8)	12-10	.72 (18.3)	.12 (3.0)	.30 (7.6)



* UL RECOGNIZED ONLY

Notes:

1. Used for:

- A. 302° (150° C) maximum temperature rating
- B. Stranded copper wire only

2. First insertion force : 12 Lb (53N) maximum
 First withdrawal force: 12 Lb (53N) maximum
 6 Lb (27N) minimum

3. Installation tools:

- A. UL listed & CSA certified: CT-100,CT-100A,CT-200,CT-570,CT-600-A(D10-250 ONLY)
 CT-1570,CT-2457CH, CT-2500
- B. UL recognized : CT-100,CT-100A,CT-200,CT-570,CT-600-A, CT-1570,CT-2457CH,CT-2500
- C. Panduit approved : CT-160, CT-260

4. Wire strip length: $9/32 \begin{smallmatrix} +1/32 \\ -0 \end{smallmatrix}$ (7.1 $\begin{smallmatrix} +.8 \\ -0 \end{smallmatrix}$)

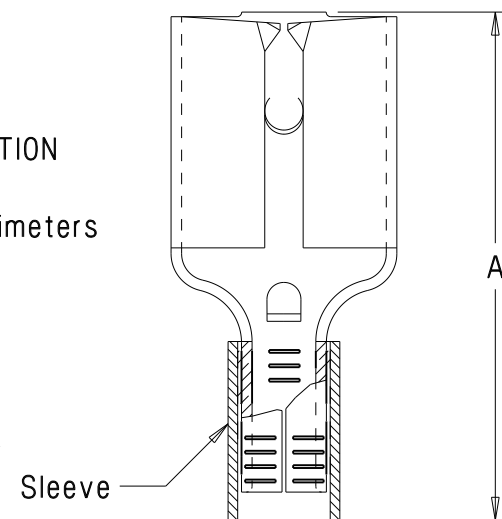
5. Material:

- A. Stamping: .016" (0.41) thick tin plated brass
 D18-250 & D14-250
 .018" (0.46) thick tin plated brass
 D10-250 only
- B. Sleeve : Tin plated brass

6. SEE www.panduit.com

FOR PART NUMBER SUFFIX DESIGNATION
 FOR PACKAGE SIZE

7. Dimensions in brackets are in millimeters



LISTED
20H3
E78522



CERTIFIED
LR31212



RECOGNIZED
E78522

PANDUIT

CORP.

TINLEY PARK, ILLINOIS

Non-insulated, sleeved barrel female
 disconnect (.250 series)

REV	DATE	BY	DESCRIPTION
13	8/11	SHOR	ADDED INSTALLATION TOOLS, UPDATED UL RECOGNIZED SYMBOL
12	7-11	SB	Added suffix part number designation for package size

DRAWN BY DAW	CHK'D RS	SCALE None	DRAWING NO. A41304
-----------------	-------------	---------------	-----------------------