

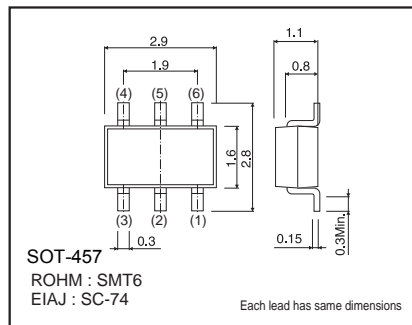
●Features

- 1) Two digital class transistors in a SMT package.
- 2) Up to 500mA can be driven.
- 3) Low $V_{CE(sat)}$ of drive transistors for low power dissipation.

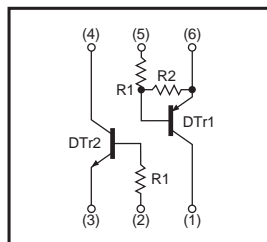
●Package, marking, and packaging specifications

Part No.	IMD10A
Package	SMT6
Marking	D10
Code	T108
Basic ordering unit (pieces)	3000

●Dimensions (Unit : mm)



●Absolute maximum ratings (Ta=25°C)



●Equivalent circuit

DTr₁

Parameter	Symbol	Limits	Unit
Supply voltage	V_{CC}	-50	V
Input voltage	V_{IN}	-5 to +5	V
Collector current	I_C	-500	mA

DTr₂

Parameter	Symbol	Limits	Unit
Collector-base voltage	V_{CBO}	50	V
Collector-emitter voltage	V_{CEO}	50	V
Emitter-base voltage	V_{EBO}	5	V
Collector current	I_C	100	mA

Total

Parameter	Symbol	Limits	Unit
Power dissipation	P_d	300(TOTAL)	mW *
Junction temperature	T_j	150	°C
Storage temperature	T_{stg}	-55 to +150	°C

* 200mW per element must not be exceeded.

●Electrical characteristics (Ta=25°C)

DTr1

Parameter	Symbol	Min.	Typ.	Max.	Unit	Conditions
Input voltage	$V_{I(off)}$	—	—	-0.3	V	$V_{CC} = -5V, I_{O} = -100\mu A$
	$V_{I(on)}$	-1.5	—	—	—	$V_{O} = -0.3V, I_{O} = -100mA$
Output voltage	$V_{O(on)}$	—	-0.1	-0.3	V	$I_{O} = -100mA, I_{E} = -5mA$
Input current	I_{I}	—	—	-25	mA	$V_{I} = -2V$
Output current	$I_{O(off)}$	—	—	-0.5	μA	$V_{CC} = -50V, V_{I} = 0V$
DC current gain	G_{I}	68	—	—	—	$I_{O} = -100mA, V_{O} = -5V$
Transition frequency	f_{T}	—	200	—	MHz	$V_{CE} = -10V, I_{E} = 50mA, f = 100MHz$ *
Input resistance	R_{1}	70	100	130	Ω	—
Resistance ratio	R_{2} / R_{1}	80	100	120	—	—

* Transition frequency of the device.

DTr2

Parameter	Symbol	Min.	Typ.	Max.	Unit	Conditions
Collector-base breakdown voltage	BV_{CBO}	50	—	—	V	$I_{C} = 50\mu A$
Collector-emitter breakdown voltage	BV_{CEO}	50	—	—	V	$I_{C} = 1mA$
Emitter-base breakdown voltage	BV_{EBO}	5	—	—	V	$I_{E} = 50\mu A$
Collector cutoff current	I_{CBO}	—	—	0.5	μA	$V_{CB} = 50V$
Emitter cutoff current	I_{EBO}	—	—	0.5	μA	$V_{EB} = 4V$
Collector-emitter saturation voltage	$V_{CE(sat)}$	—	—	0.3	V	$I_{C} = 10mA, I_{B} = 1mA$
DC current transfer ratio	h_{FE}	100	250	600	—	$V_{CE} = 5V, I_{C} = 1mA$
Transition frequency	f_{T}	—	250	—	MHz	$V_{CE} = 10V, I_{E} = -5mA, f = 100MHz$ *
Input resistance	R_{1}	7	10	13	$k\Omega$	—

* Transition frequency of the device.

●Electrical characteristic curves

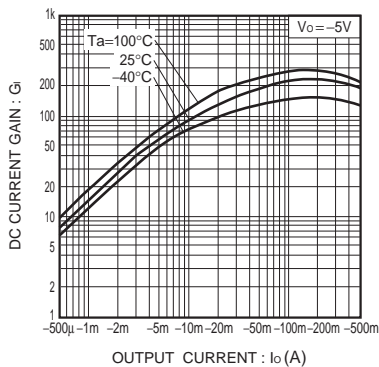


Fig.1 DC current gain vs. Output current characteristics

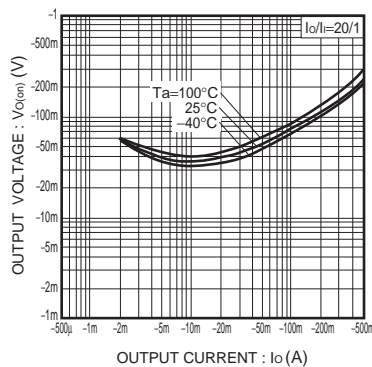


Fig.2 Output voltage vs. Output current characteristics

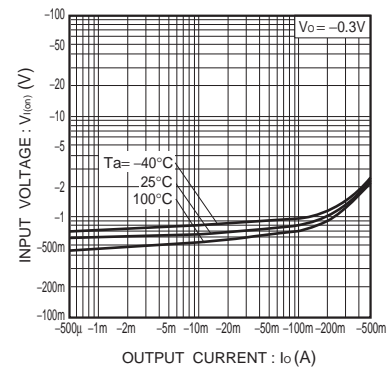


Fig.3 Input voltage vs. Output current (ON characteristics)

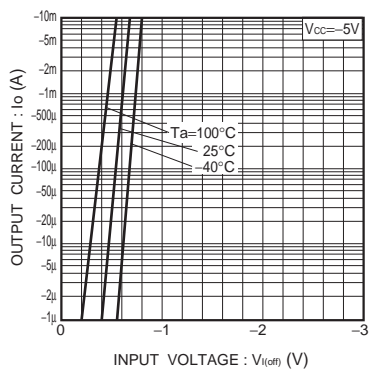


Fig.4 Output current vs. Input voltage (OFF characteristics)

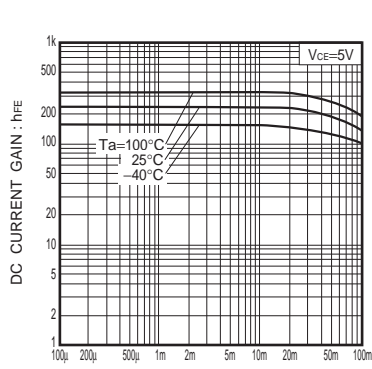


Fig.5 DC current gain vs. Collector current

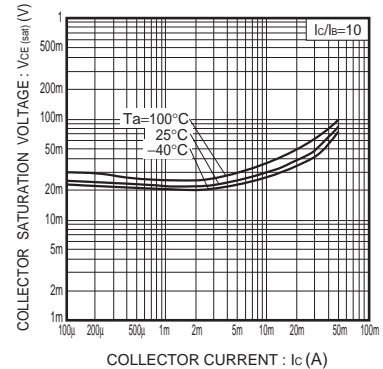


Fig.6 Collector-emitter saturation voltage vs. Collector current

Notes

- 1) The information contained herein is subject to change without notice.
- 2) Before you use our Products, please contact our sales representative and verify the latest specifications :
- 3) Although ROHM is continuously working to improve product reliability and quality, semiconductors can break down and malfunction due to various factors.
Therefore, in order to prevent personal injury or fire arising from failure, please take safety measures such as complying with the derating characteristics, implementing redundant and fire prevention designs, and utilizing backups and fail-safe procedures. ROHM shall have no responsibility for any damages arising out of the use of our Products beyond the rating specified by ROHM.
- 4) Examples of application circuits, circuit constants and any other information contained herein are provided only to illustrate the standard usage and operations of the Products. The peripheral conditions must be taken into account when designing circuits for mass production.
- 5) The technical information specified herein is intended only to show the typical functions of and examples of application circuits for the Products. ROHM does not grant you, explicitly or implicitly, any license to use or exercise intellectual property or other rights held by ROHM or any other parties. ROHM shall have no responsibility whatsoever for any dispute arising out of the use of such technical information.
- 6) The Products are intended for use in general electronic equipment (i.e. AV/OA devices, communication, consumer systems, gaming/entertainment sets) as well as the applications indicated in this document.
- 7) The Products specified in this document are not designed to be radiation tolerant.
- 8) For use of our Products in applications requiring a high degree of reliability (as exemplified below), please contact and consult with a ROHM representative : transportation equipment (i.e. cars, ships, trains), primary communication equipment, traffic lights, fire/crime prevention, safety equipment, medical systems, servers, solar cells, and power transmission systems.
- 9) Do not use our Products in applications requiring extremely high reliability, such as aerospace equipment, nuclear power control systems, and submarine repeaters.
- 10) ROHM shall have no responsibility for any damages or injury arising from non-compliance with the recommended usage conditions and specifications contained herein.
- 11) ROHM has used reasonable care to ensure the accuracy of the information contained in this document. However, ROHM does not warrant that such information is error-free, and ROHM shall have no responsibility for any damages arising from any inaccuracy or misprint of such information.
- 12) Please use the Products in accordance with any applicable environmental laws and regulations, such as the RoHS Directive. For more details, including RoHS compatibility, please contact a ROHM sales office. ROHM shall have no responsibility for any damages or losses resulting from non-compliance with any applicable laws or regulations.
- 13) When providing our Products and technologies contained in this document to other countries, you must abide by the procedures and provisions stipulated in all applicable export laws and regulations, including without limitation the US Export Administration Regulations and the Foreign Exchange and Foreign Trade Act.
- 14) This document, in part or in whole, may not be reprinted or reproduced without prior consent of ROHM.



Thank you for your accessing to ROHM product informations.
More detail product informations and catalogs are available, please contact us.

ROHM Customer Support System

<http://www.rohm.com/contact/>