

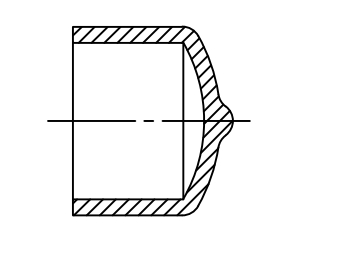
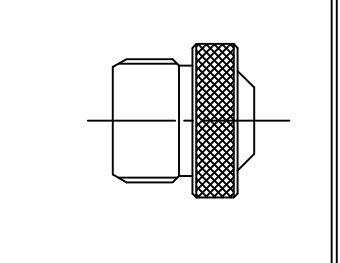
| PART NO. | ENGINEERING NO. | FINISHED LENGTH |
|------------|-----------------|-----------------|
| 1201150055 | 803P802 | 12 IN |
| 1201150069 | 803P802-02 | 2M (6FT 7in) |
| 1201150073 | 803P802-06 | 6M (19FT 8in) |

CHART
⑧

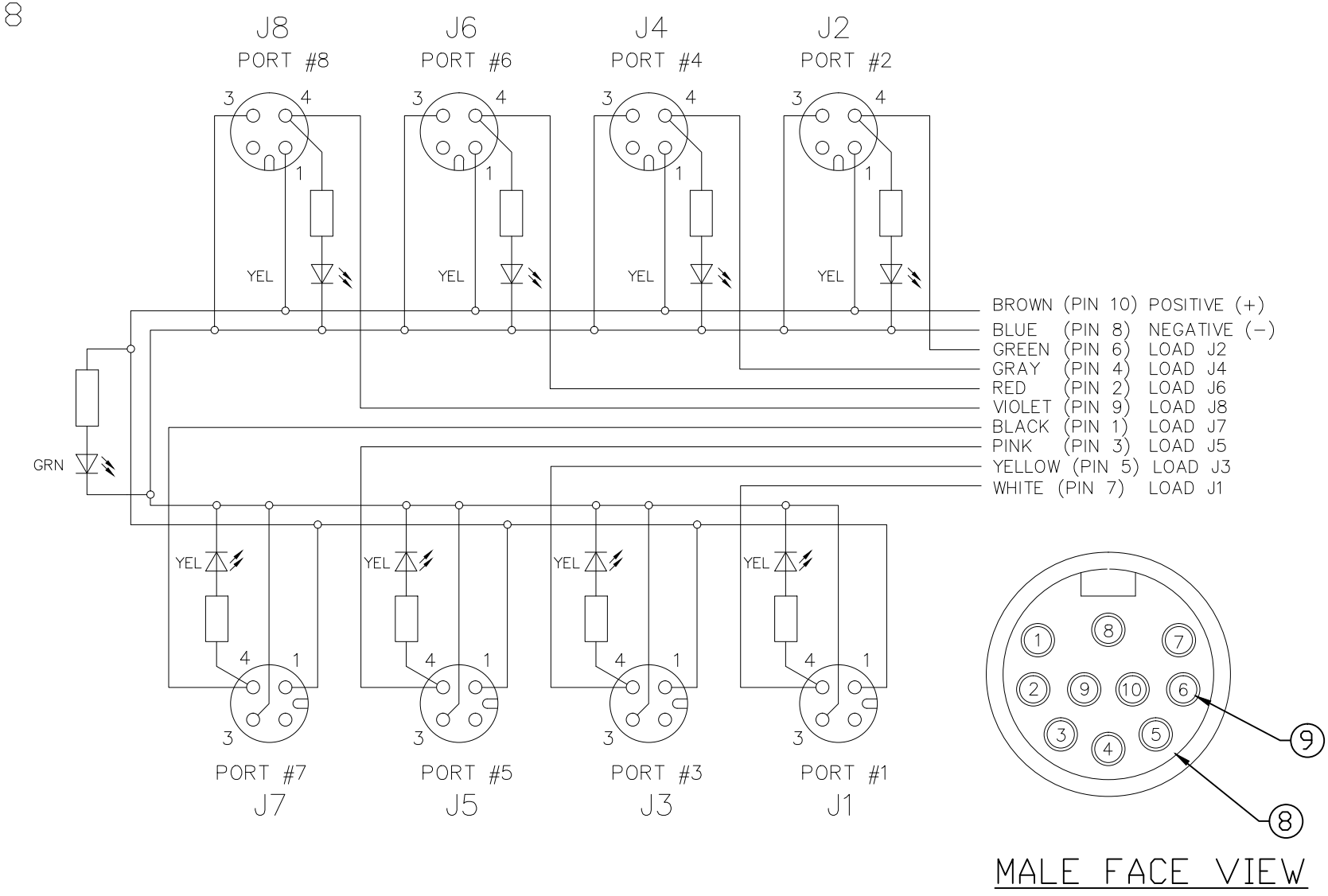
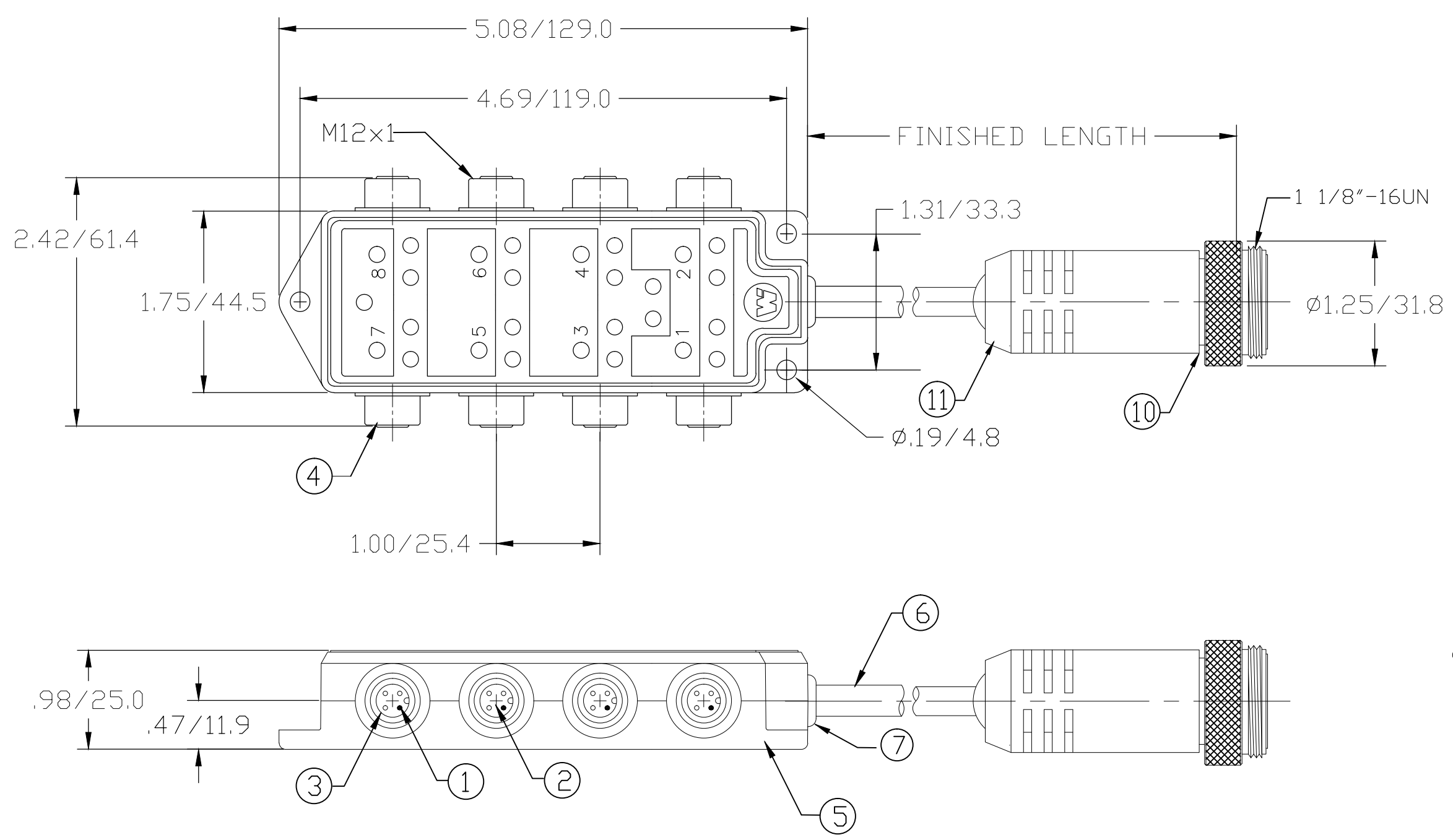
CABLE LENGTH TOLERANCES ⑧

| | |
|--------------------------|-------------------------|
| >.3M [1FT]: | +19mm-0 [+ .75in-0] |
| .3 - .9M [1 - 3FT]: | +44.5mm-0 [+1.75in-0] |
| .9 - 1.8M [3 - 6FT]: | +55.6mm-0 [+2.19in-0] |
| 1.8 - 3.7M [6 - 12FT]: | +88.9mm-0 [+3.50in-0] |
| 3.7 - 7.3M [12 - 24FT]: | +165.1mm-0 [+6.50in-0] |
| 7.3-14.6M [24 - 48FT]: | +317.5mm-0 [+12.50in-0] |
| 14.6 - 30.5M [48-100FT]: | +622.3mm-0 [+24.50in-0] |
| OVER 30M [100FT] | +2% OF FINISHED LENGTH |

⑧ LENGTH: BLANK=12IN
-02=2M
-06=6M
-10=10M
CAT# 803P802-XX

| DUST PROTECTOR | BLANKING PLUG |
|---|---|
|  |  |
| 1201160026 (70-1710) | 1203090067 (BG12103) |

⑧ PARTS NOTED ABOVE ARE PACKED UNASSEMBLED WITH FINISHED ASSEMBLY



- NOTES:**
1. MATERIAL: AS NOTED
 2. FINISH: AS NOTED
 3. ELECTRICAL:
VOLTAGE: 10-30 VDC
CURRENT: 4A
 4. TEMP RATING: -20°TO +90°C
 5. PROTECTION: IP67 (WHEN MATED)
 6. ALL DIMS ARE FOR REFERENCE UNLESS NOTED OTHERWISE

| ITEM | DESCRIPTION | MATERIAL | FINISH |
|------|-------------------|---------------|--------------|
| 11 | OVERMOLD | PVC | YELLOW |
| 10 | COUPLING NUT | ZINC DIE-CAST | BLACK E-COAT |
| 9 | CONTACT PIN | COPPER ALLOY | GOLD PLATED |
| 8 | INSERT | PVC | YELLOW |
| 7 | GROMMET | NITRILE | BLACK |
| 6 | CABLE,#22-9 #18-1 | PVC JACKET | YELLOW |
| 5 | HOUSING, 8 PORT | NYLON | YELLOW |
| 4 | RECEPTACLE SHELL | ZINC DIE-CAST | BLACK E-COAT |
| 3 | O-RING | NITRILE | RED |
| 2 | CONTACT SOCKET | COPPER ALLOY | GOLD PLATED |
| 1 | INSERT | NYLON | BLACK |

| | | | | | | | |
|---|--|--|---|--------------------|---|----------------------------|--|
| EC NO: ICG2017-1138 DRWN: RSTONE 6/14/17 CH'KD: M ZIELIN 2009/08/28 APPR: BWOODMAN2009/08/28 | QUALITY SYMBOL ▽=0 ▽=0 | GENERAL TOLERANCES (UNLESS SPECIFIED) 4 PLACES ±--- ±--- 3 PLACES ±--- ±--- 2 PLACES ±--- ±--- 1 PLACE ±--- ±--- | DIMENSION STYLE IN/MM | SCALE 1:1 | DESIGN UNITS INCH | THIRD ANGLE PROJECTION | |
| | DRAWN BY BW | DATE 2009/08/27 | CHECKED BY LH | DATE 2009/08/27 | TITLE MICRO-CHANGE MPIS 8 PORT SIDE MOUNT PNP MC 10P M/MP PVC | | |
| | APPROVED BY JFMURPHY | DATE 2009/08/28 | MATERIAL NO. 123450001 | | DOCUMENT NO. SD-120115-009 | SHEET NO. 1 OF 1 | |
| | DRAFT WHERE APPLICABLE MUST REMAIN WITHIN DIMENSIONS | | THIS DRAWING CONTAINS INFORMATION THAT IS PROPRIETARY TO MOLEX INCORPORATED AND SHOULD NOT BE USED WITHOUT WRITTEN PERMISSION | | | | |