



# DIN signal female connector angled



## General information

|   |   |                   |                              |
|---|---|-------------------|------------------------------|
| Design  | complementary to IEC 60603-2  |                   | types: M invers female       |
| No. of contacts   | 78+2; 60+4; 42+6; 24+8; 6+10  |                   |                              |
| Contact spacing   | 2,54 mm for signal contacts   |                   | 7,62 mm for special contacts |
| Test voltage  | 1000V   |                   |                              |
| Contact resistance                                      | max. 20mOhm   |                   |                              |
| Insulation resistance                                   | min. 10 <sup>9</sup> Ohm  |                   |                              |
| Working current   | 2A at 20°C (see derating diagram)<br>for special contacts refer to corresponding data sheet |                   |                              |
| Temperature range                                       | -55°C ... +125°C  |                   |                              |
| Termination technology                                  | solder pins   |                   |                              |
| Clearance & creepage distance                           | min. 1,2mm each   |                   |                              |
| Insertion and withdrawal force without special contacts | 6pole max. 6N   | 42pole max. 40N   |                              |
|   | 24pole max. 23N   | 60pole max. 57N   | 78pole max. 74N              |
|   |   |                   |                              |
| Mating cycles   | PL 1 acc. to IEC 60603-2  | 500 mating cycles |                              |
|   | PL 2 acc. to IEC 60603-2  | 400 mating cycles |                              |
|   | PL 3 acc. to IEC 60603-2  | 50 mating cycles  |                              |
| UL file   | E102079   |                   |                              |
| RoHS - compliant  | Yes   |                   |                              |
| Leadfree  | Yes   |                   |                              |
| Hot plugging  | No  |                   |                              |

## Insulator material

|                                 |   |
|---------------------------------|---|
| Material                        | PBT (thermoplastics, glass fiber reinforcement 30%) |
| Color                           | RAL 7032 (grey)                                     |
| UL classification               | UL 94-V0  |
| Material group acc. IEC 60664-1 | IIIa (175 ≤ CTI < 400)                              |
| NFF classification              | I3, F4  |

## Contact material

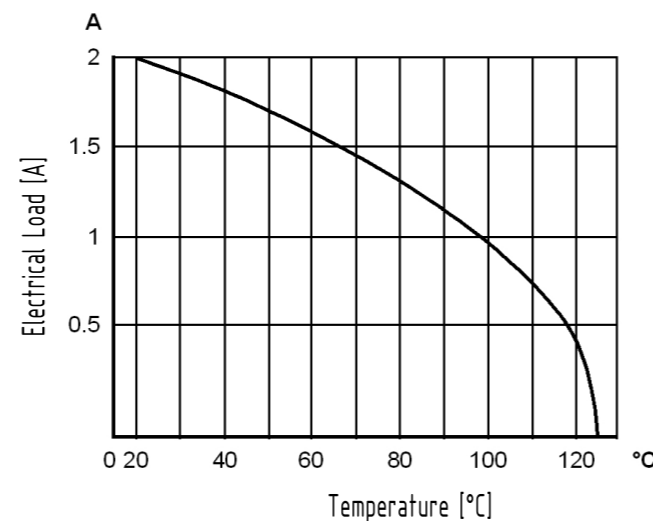
|                          |                                   |
|--------------------------|-----------------------------------|
| Contact material         | Copper alloy                      |
| Plating termination zone | Sn over Ni                        |
| Plating contact zone     | Au over Ni                        |
| Plating special contacts | refer to corresponding data sheet |

## Derating diagram acc. to IEC 60512-5 (Current carrying capacity)

The current carrying capacity is limited by maximum temperature of materials for inserts and contacts including terminals.

The current capacity curve is valid for continuous, non interrupted current loaded contacts of connectors when simultaneous power on all contacts is given, without exceeding the maximum temperature.

Control and test procedures according to DIN IEC 60512-5



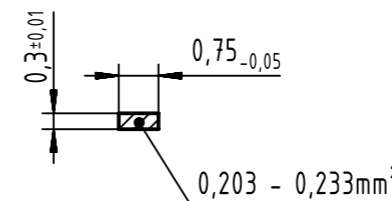
## Assembly and soldering instructions

The connectors should be protected when being soldered in a dip, flow or film soldering baths. Otherwise, they might become contaminated as a result of soldering operations or deformed as a result of overheating.

(1) For prototypes and short runs protect the connectors with an industrial adhesive tape, e.g. Tesaband 4331 (www.tesa.de). Cover the underside of the connector moulding and the adjacent parts of the pcb as well as the open sides of the connector. This will prevent heat and gases of the soldering apparatus from damaging the connector. About 140 + 5 mm of the tape should suffice.

(2) For large series a jig is recommended. Its protective cover with a fast action mechanical locking device shields the connectors from gas and heat generated by the soldering apparatus. As an additional protection a foil can be used for covering the parts that should not be soldered.

## Cross section of solder terminations



## Special contacts

Compatible special contacts: only female special contacts acc. DIN 41626 T1 (Power) and male special contacts acc. DIN 41626 T2 (Coax)

|   |  |   |                       |   |                        |
|---|--|---|-----------------------|---|------------------------|
|   | All Dimensions in mm<br>Original Size DIN A3 | Scale<br>1:1                                | Free size tol.        | Ref.<br>Sub. DS 09 73 220 02 03 Mod. A 2013-12-03       |                        |
|   | All rights reserved<br>Department EC PD - DE | Created by<br>KAHLERK                       | Inspected by<br>TADJE | Standardisation<br>HOFFMANN                             | Date<br>2014-08-01     |
| HARTING Electronics GmbH<br>D-32339 Espelkamp |  | Title<br>DIN signal female connector angled |                       |   | State<br>Final Release |
|   |  | Type<br>DS                                  | Number<br>09732200203 | Doc-Key / ECM-Nr.<br>100580922/UGD/000/A<br>50000076060 | Rev. A<br>Page 1/1     |