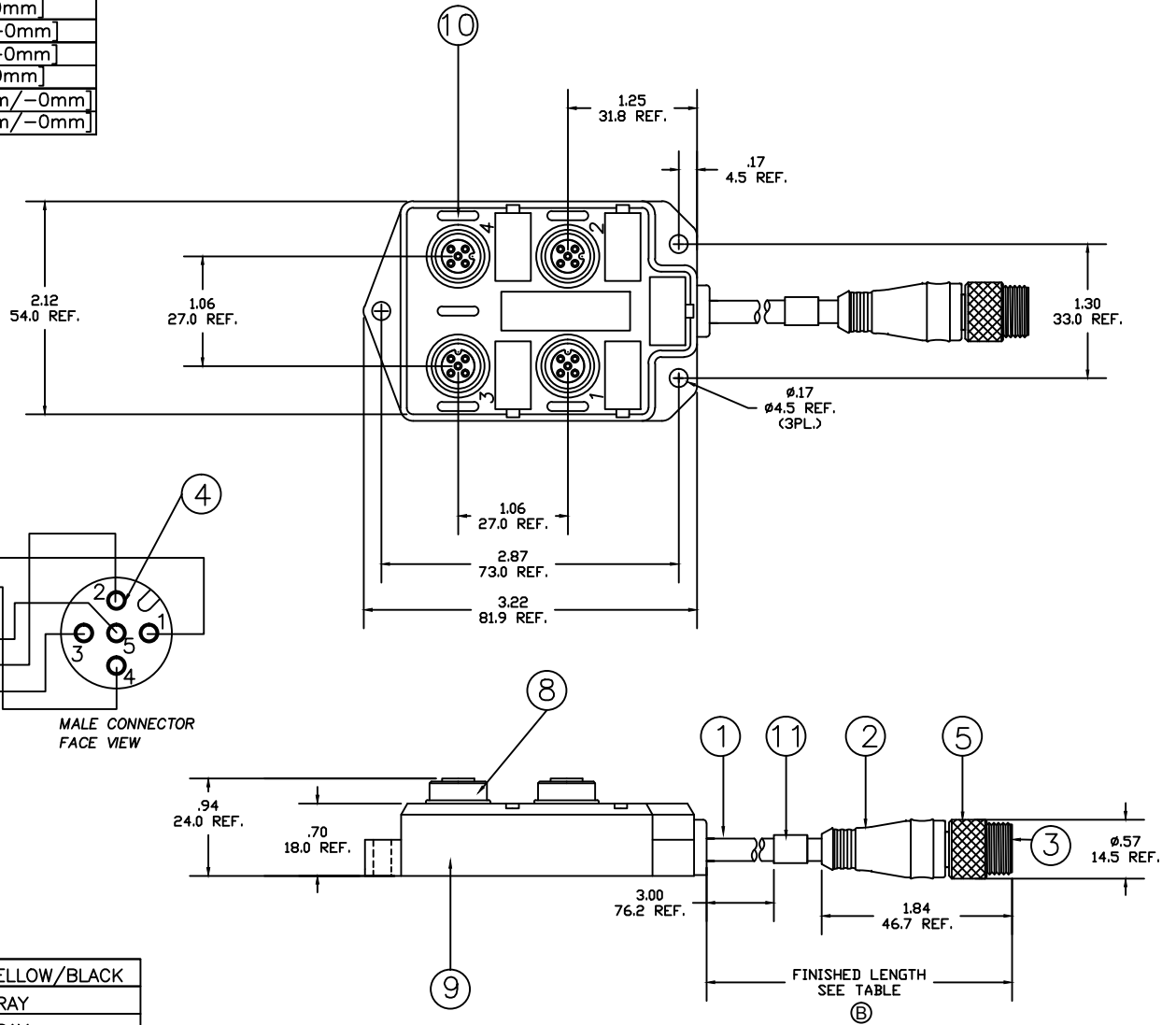
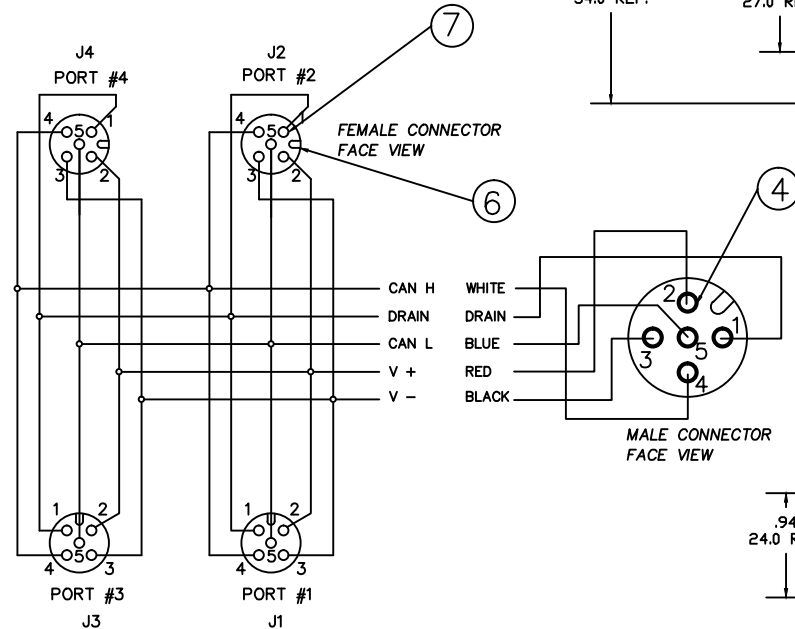


MATERIAL NO.	FINISHED LENGTH
848599001	1.6FT. +1.75IN.-0IN. [.49M+44.5mm/-0mm]
848599002	3.0FT. +2.19IN.-0IN. [.92M +55.6mm/-0mm]
848599003	6.5FT. +3.50IN.-0IN. [.98M +88.9mm/-0mm]
848599004	10.0FT. +3.50IN.-0IN. [3.05M +88.9/-0mm]
848599005	13.0FT. +6.50IN.-0IN. [3.96M +165.1mm/-0mm]
848599006	16.0FT. +6.50IN.-0IN. [4.88M +165.1mm/-0mm]

NOTE:
ASSEMBLY IS RoHS COMPLIANT



11	LABEL	VINYL	YELLOW/BLACK
10	LENS	CELANEX	GRAY
9	MPIS HOUSING	NYLON	GRAY
8	SHELL	COPPER	NICKEL PLATED
7	CONTACT SOCKET	BRASS	GOLD PLATED
6	INSERT, FEMALE	NYLON	BLACK
5	COUPLING NUT, MALE	BRASS	NICKEL PLATED
4	CONTACT PIN	BRASS	GOLD PLATED
3	INSERT, MALE	NYLON	BLACK
2	OVER MOLD	PVC	GRAY
1	CABLE DROP, DEVICE NET	PVC JACKET	LIGHT GRAY
ITEM	DESCRIPTION	MATERIAL	FINISH

CHANGE LENGTH DIM LOCATION EC NO: IPG2017-0746 DRWN: MZIELINS 2017/02/17 CHKD: -- APPR: BWOODMAN	QUALITY SYMBOL =0 =0	GENERAL TOLERANCES (UNLESS SPECIFIED)		DIMENSION STYLE		SCALE	DESIGN UNITS	THIRD ANGLE PROJECTION	
		mm	INCH	IN/MM	NTS	INCH			
REV B	DESCRIPTION	4 PLACES	±---	±---	DRAWN BY	DATE	TITLE	TOP MOUNT MICRO MPIS 4 GANG DEVICE NET	
		3 PLACES	±---	±---	TWOLDEGE	2008/6/18			
		2 PLACES	±---	±---	CHECKED BY	DATE			
		1 PLACE	±---	±---	RSTONE	2008/6/18			
			±---	±---	APPROVED BY	DATE			
		ANGULAR ±---			JFMURPHY		MOLEX INCORPORATED		
		DRAFT WHERE APPLICABLE MUST REMAIN WITHIN DIMENSIONS		MATERIAL NO.		DOCUMENT NO.	SD-84859-001		
		SIZE	C		THIS DRAWING CONTAINS INFORMATION THAT IS PROPRIETARY TO MOLEX INCORPORATED AND SHOULD NOT BE USED WITHOUT WRITTEN PERMISSION				
							SHEET NO.	1 OF 1	