



LED module with integrated LED, 5 V DC, green, solder terminal, for use on printed circuit boards

product brand name	SIRIUS ACT
product designation	LED module
product type designation	3SU1
<b>General technical data</b>	
product component	
• diode	Yes
• lamp transformer	No
• light source	Yes
• series resistor	No
insulation voltage rated value	30 V
degree of pollution	3
type of voltage of the operating voltage	DC
• for actuation	DC
surge voltage resistance rated value	0.8 kV
consumed current maximum	20 mA
protection class IP	
• of the enclosure	IP40
• of the terminal	IP20
shock resistance	
• according to IEC 60068-2-27	sinusoidal half-wave 15g / 11 ms
• for railway applications according to EN 61373	Category 1, Class B
vibration resistance	
• according to IEC 60068-2-6	10 ... 500 Hz: 5g
• for railway applications according to EN 61373	Category 1, Class B
operating period typical	100 000 h
reference code according to IEC 81346-2	P
Substance Prohibitance (Date)	10/01/2014
operating voltage 1	
• at DC rated value	5 V
relative positive tolerance of the operating voltage	20 %
relative negative tolerance of the operating voltage	20 %
<b>Control circuit/ Control</b>	
inrush current maximum	0.1 A
<b>Connections/ Terminals</b>	
type of electrical connection	Socket connection (THT)
<b>Lamp</b>	
type of light source	LED
color of the light source	green
light intensity	900 ... 1 400 mcd

<b>certificate of suitability</b>	
<ul style="list-style-type: none"> <li>• ATEX</li> <li>• IECEx</li> </ul>	<p>No</p> <p>No</p>
<b>Ambient conditions</b>	
<b>ambient temperature</b>	
<ul style="list-style-type: none"> <li>• during operation</li> <li>• during storage</li> </ul>	<p>-25 ... +70 °C</p> <p>-40 ... +80 °C</p>
environmental category during operation according to IEC 60721	3M6, 3S2, 3B2, 3K6 (with relative air humidity of 10 ... 95%, no condensation in operation permitted)
<b>Installation/ mounting/ dimensions</b>	
<b>fastening method</b>	
<ul style="list-style-type: none"> <li>• of modules and accessories</li> </ul>	Printed circuit board
<b>height</b>	8.1 mm
<b>width</b>	8.1 mm
<b>depth</b>	30.6 mm
<b>suitability for integration</b>	
<ul style="list-style-type: none"> <li>• plastic enclosure</li> <li>• metal enclosure</li> </ul>	<p>No</p> <p>No</p>
<b>Certificates/ approvals</b>	
<b>General Product Approval</b>	<b>Declaration of Conformity</b>



[Confirmation](#)



EG-Konf.

**Test Certificates**

**Marine / Shipping**

[Type Test Certificates/Test Report](#)

[Special Test Certificate](#)



ABS



LRS



PRS



RINA

**Marine / Shipping**

**other**



RMRS

[Confirmation](#)

[Environmental Confirmations](#)

**Further information**

**Information- and Downloadcenter (Catalogs, Brochures,...)**

<https://www.siemens.com/ic10>

**Industry Mall (Online ordering system)**

<https://mall.industry.siemens.com/mall/en/en/Catalog/product?mfb=3SU1401-3BA40-5AA0>

**Cax online generator**

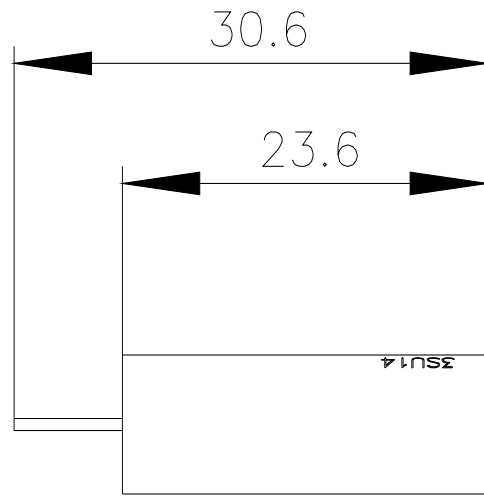
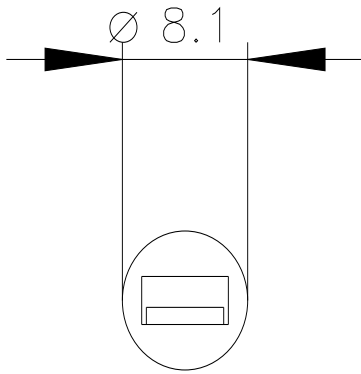
<http://support.automation.siemens.com/WW/CAXorder/default.aspx?lang=en&mfb=3SU1401-3BA40-5AA0>

**Service&Support (Manuals, Certificates, Characteristics, FAQs,...)**

<https://support.industry.siemens.com/cs/ww/en/ps/3SU1401-3BA40-5AA0>

**Image database (product images, 2D dimension drawings, 3D models, device circuit diagrams, EPLAN macros, ...)**

[http://www.automation.siemens.com/bilddb/cax\\_de.aspx?mfb=3SU1401-3BA40-5AA0&lang=en](http://www.automation.siemens.com/bilddb/cax_de.aspx?mfb=3SU1401-3BA40-5AA0&lang=en)



last modified:

3/9/2022 