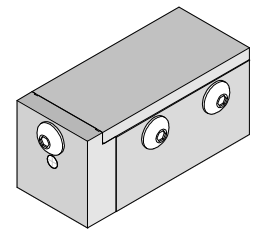




**1-by-1 QSFP+
Insertion Tool**

**Application Tooling
Specification Sheet**



Order No. 62202-9690

FEATURES

- Lightweight tool used in the insertion of a QSFP+ connector in a PCB
- Inserts connector to a PCB without damage to the board
- Use tool 62202-9760 for removing connectors

SCOPE

Products: Quad Small Form-factor Pluggable Plus (QSFP+) Cage, 1x1 open or closed top with press-fit PC Tails.

Connector Series No.	Connector Order no.					
74750	74750-0021	74750-0022	74750-0023	74750-0024	74750-0025	74750-0026
	74750-0097	74750-1100	74750-1101	74750-1102	74750-1103	74750-1200
	74750-1201	74750-1202	74750-1203			

Notes:

1. See the following pages for tooling operation instructions.
2. These tools require a "Keep Out Zone" around the connector free of components. The rear of the connector should be .20" (5.08mm). The right and left sides should be .06" (1.5mm). See Figure 1.

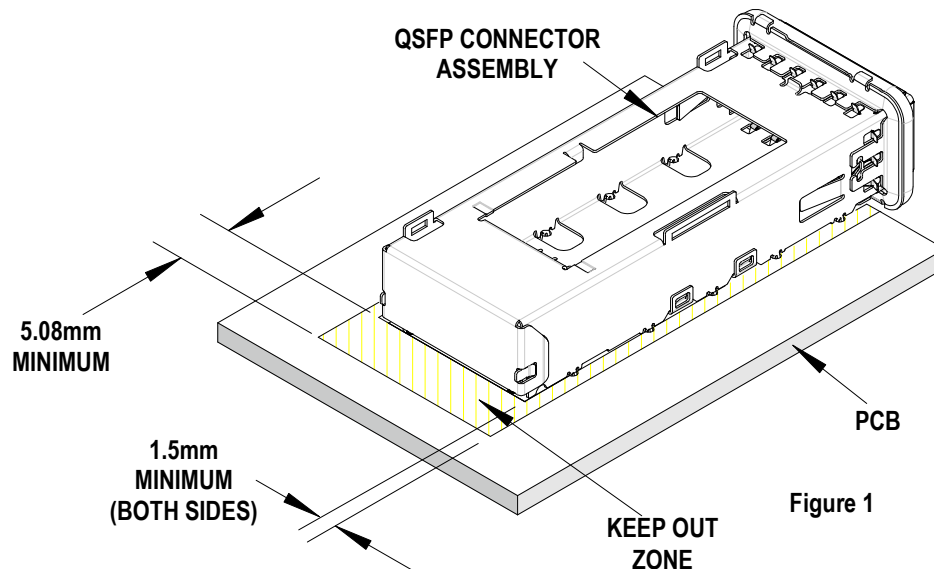


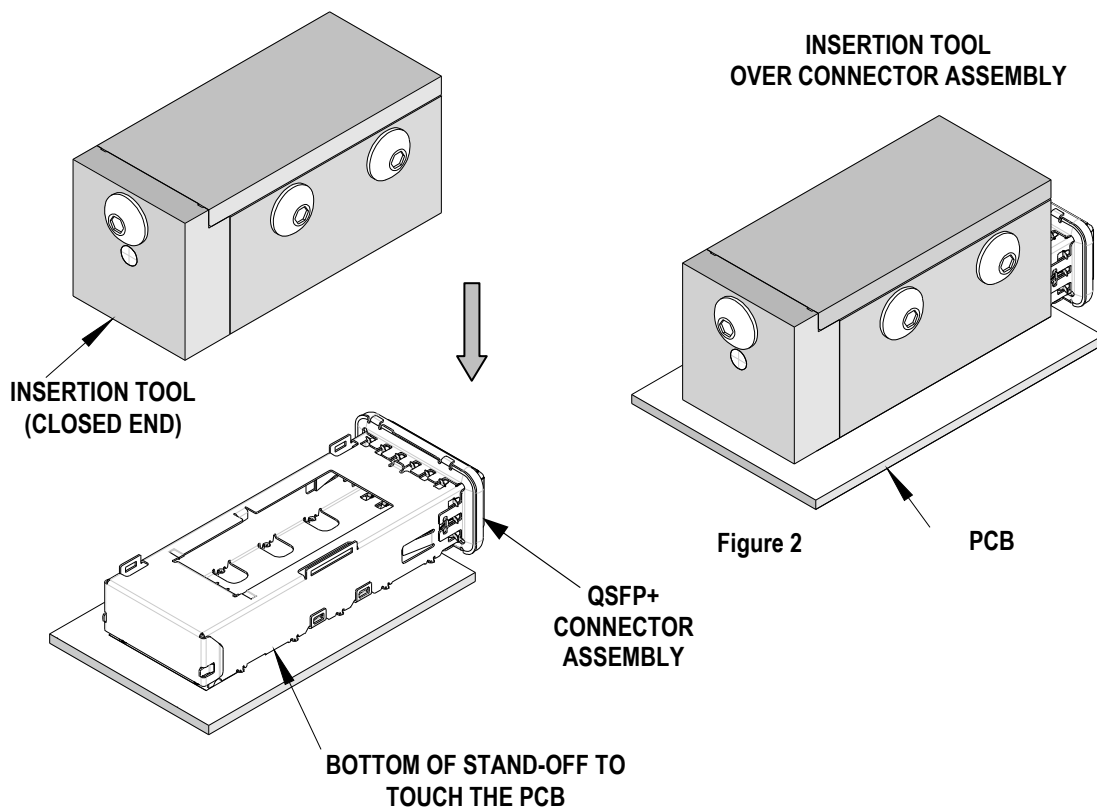
Figure 1

Description

The following Instructions are used for inserting the 1 by 1 cage into a PCB.

Operation

1. Place a cage assembly on the PCB and start the compliant pins in the PCB holes.
2. Place the tool on the connector assembly (closed end to the back end of the connector). See Figure 2.
3. Place tool, connector, and PCB, in a press of suitable size and force, and seat the connector assembly shown. The PCB must be supported from below - the support under the PCB (furnished by the customer) must have clearance for the connector pins if they come through the PCB.
4. This press-in tool is not intended to provide a down-stop for the insertion press. If the press-in tool contacts the PCB, the cage will be damaged. The cage should be pressed only until the bottom of the stand-offs (on the compliant pins) touch the PCB.



CAUTION: Molex application tooling specifications are valid only when used with Molex connectors and tooling.

Contact Information

For more information on Molex application tooling please contact Molex at 1-800-786-6539.

<http://www.molex.com>