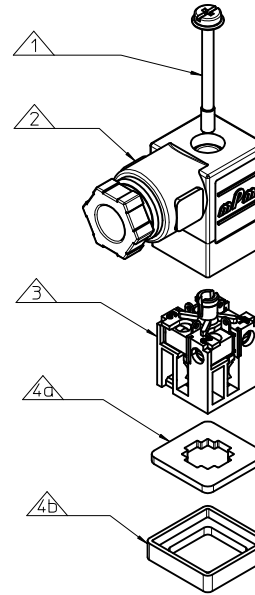


NOTES

- PLEASE SEE SHEET 2 FOR CURRENTLY CONFIGURED PART NUMBERS. FOR SPECIFIC PART NUMBERS PLEASE CONTACT SALES OR CONSULT THE INTELLIGENT PART NUMBERS IN THE TABLE ATTACHED.
- EARTH POSITION SHOWN, H12
- FOR PACKAGING SEE PACKAGING SPEC PK-121024-C05
- PRODUCT SPEC: SEE PS-121201-001
- PART NO 1210230093 SHOWN FOR ILLUSTRATION PURPOSES ONLY

LAST INSPECTION NUMBER USED: 2



ITEM	DESCRIPTION
1	SCREW
2	COVER ASSEMBLY
3	INSERT ASSEMBLY
4a	FLAT GASKET
4b	PROFILE GASKET

C05307N22**

SERIES
C05= INTERNAL THREAD FORM C
POLES
2= 2 POLE & 3= 3 POLE
THREAD
07= PG7, M2= M12x1.5
MATERIAL AND HOUSING COLOUR
G= PA6 GRAY, N= PA6 BLACK, W= PA6 BLACK V0, T= TRANSPARENT
EARTH PIN POSITION
0= UNMOUNTED, 2= H12, 3= H3, 6= H6, 9= H9

SCREW AND GASKET
1= NBR PROFILE GASKET & SCREW
2= NBR FLAT GASKET & SCREW
3= WHITE SILICON PROFILE GASKET & SCREW
4= WHITE SILICON FLAT GASKET & SCREW

NON STANDARD COMPONENTS
14= SINGLE PACKED IN NEUTRAL BAG
5J= SINGLE PACKED
5S= SINGLE PACKED
6X= WITHOUT RING NUT AND CABLE FIXING NUT

ADDED PART NUMBERS EC NO: IPG2012-0757 DRAWN: DSHEA 2012/04/19 CHKD: SMCREVEY 2012/04/24 APPR: EFOLAN 2012/04/30	DESCRIPTION REV C	QUALITY SYMBOLS ▽=0 ▽=0	GENERAL TOLERANCES (UNLESS SPECIFIED) <table border="1"> <thead> <tr> <th></th> <th>mm</th> <th>INCH</th> </tr> </thead> <tbody> <tr> <td>4 PLACES</td> <td>± ---</td> <td>± ---</td> </tr> <tr> <td>3 PLACES</td> <td>± ---</td> <td>± ---</td> </tr> <tr> <td>2 PLACES</td> <td>± 0.10</td> <td>± ---</td> </tr> <tr> <td>1 PLACE</td> <td>± 0.2</td> <td>± ---</td> </tr> <tr> <td>ANGULAR</td> <td>± ---°</td> <td></td> </tr> </tbody> </table>		mm	INCH	4 PLACES	± ---	± ---	3 PLACES	± ---	± ---	2 PLACES	± 0.10	± ---	1 PLACE	± 0.2	± ---	ANGULAR	± ---°		DIMENSION STYLE MM ONLY DRAWN BY DSHEA DATE 2011/05/20 CHECKED BY DMAHER DATE 2011/05/27 APPROVED BY EFOLAN DATE 2011/06/08	SCALE 2:1 DESIGN UNITS METRIC THIRD ANGLE PROJECTION	TITLE INTERNAL THREAD C05 SERIES
			mm	INCH																				
4 PLACES	± ---	± ---																						
3 PLACES	± ---	± ---																						
2 PLACES	± 0.10	± ---																						
1 PLACE	± 0.2	± ---																						
ANGULAR	± ---°																							
DRAFT WHERE APPLICABLE MUST REMAIN WITHIN DIMENSIONS	MATERIAL NO. SEE SHEET 2	DOCUMENT NO. SD-121023-007	SHEET NO. 1 OF 2																					

PART NO	mPm NO	DESCRIPTION
1210230082	C05207G62	TYPE C 2P PG7 GRAY NBR FLAT GASKET
1210230083	C05207N21	TYPE C 2P PG7 BLACK NBR PROFILE GASKET
1210230084	C05207N22	TYPE C 2P PG7 BLACK NBR FLAT GASKET
1210230087	C05207T22	TYPE C 2P PG7 TRANSPARENT NBR FLAT GASKET
1210230093	C05307N22	TYPE C 3P PG7 BLACK NBR FLAT GASKET
1210230095	C05307T22	TYPE C 3P PG7 TRANSPARENT NBR FLAT GASKET
1210230684	C05307N21	TYPE C 3P PG7 BLACK NBR PROFILE GASKET
1210230691	C052M2N21	TYPE C 2P M12x1.5 BLACK NBR PROFILE GASKET
1210230713	C05207N626X	TYPE C 2P PG7 BLACK NBR FLAT GASKET NO RING NUT OR CABLE FIXING NUT
1210230775	C052M2N62	TYPE C 2P M12x1.5 BLACK NBR FLAT GASKET
1210230779	C053M2N62	TYPE C 3P M12x1.5 BLACK NBR FLAT GASKET
1210230824	C053M2N21	TYPE C 3P M12x1.5 BLACK NBR PROFILE GASKET
1210240019	C05207G625J	TYPE C 2P PG7 GRAY NBR FLAT GASKET SINGLE BAGGED
1210240022	C05207N625S	TYPE C 2P PG7 BLACK NBR FLAT GASKET SINGLE BAGGED
1210240503	C05207N6214	TYPE C 2P PG7 BLACK NBR FLAT GASKET SINGLE BAGGED IN NEUTRAL BAG
1210230085	C05207N62	TYPE C 2P PG7 BLACK NBR FLAT GASKET
1210230094	C05307N62	TYPE C 3P PG7 BLACK NBR FLAT GASKET
1210230670	C05307N61	TYPE C 3P PG7 BLACK NBR PROFILE GASKET
1210230088	C05207T62	TYPE C 2P PG7 TRANSPARENT NBR FLAT GASKET
1210240946	C05207N61	TYPE C 2P PG7 BLACK NBR PROFILE GASKET
1210240947	C05207N63	TYPE C 2P PG7 BLACK SILICONE PROFILE GASKET

SEE SHEET 1 EC NO: IPG2012-0757 DRAWN BY: OSHEA 2012/04/19 CHKD: SMCREVEY 2012/04/24 APPR: EFOLAN 2012/04/30	DESCRIPTION REV C	QUALITY SYMBOLS $\nabla=0$ $\nabla=0$	GENERAL TOLERANCES (UNLESS SPECIFIED) <table border="1"> <thead> <tr> <th></th> <th>mm</th> <th>INCH</th> </tr> </thead> <tbody> <tr><td>4 PLACES</td><td>\pm---</td><td>\pm---</td></tr> <tr><td>3 PLACES</td><td>\pm---</td><td>\pm---</td></tr> <tr><td>2 PLACES</td><td>\pm0.10</td><td>\pm---</td></tr> <tr><td>1 PLACE</td><td>\pm0.2</td><td>\pm---</td></tr> <tr><td>ANGULAR</td><td>\pm---</td><td>\pm---</td></tr> </tbody> </table>		mm	INCH	4 PLACES	\pm ---	\pm ---	3 PLACES	\pm ---	\pm ---	2 PLACES	\pm 0.10	\pm ---	1 PLACE	\pm 0.2	\pm ---	ANGULAR	\pm ---	\pm ---	DIMENSION STYLE MM ONLY	SCALE 2:1	DESIGN UNITS METRIC	THIRD ANGLE PROJECTION
			mm	INCH																					
		4 PLACES	\pm ---	\pm ---																					
		3 PLACES	\pm ---	\pm ---																					
2 PLACES	\pm 0.10	\pm ---																							
1 PLACE	\pm 0.2	\pm ---																							
ANGULAR	\pm ---	\pm ---																							
		DRAWN BY: OSHEA DATE: 2011/05/20	INTERNAL THREAD C05 SERIES																						
		CHECKED BY: DMAHER DATE: 2011/05/27	MOLEX INCORPORATED																						
		APPROVED BY: EFOLAN DATE: 2011/06/08	SEE TABLE	MATERIAL NO. SD-121023-007	DOCUMENT NO.	SHEET NO. 2 OF 2																			
DRAFT WHERE APPLICABLE MUST REMAIN WITHIN DIMENSIONS							THIS DRAWING CONTAINS INFORMATION THAT IS PROPRIETARY TO MOLEX INCORPORATED AND SHOULD NOT BE USED WITHOUT WRITTEN PERMISSION																		