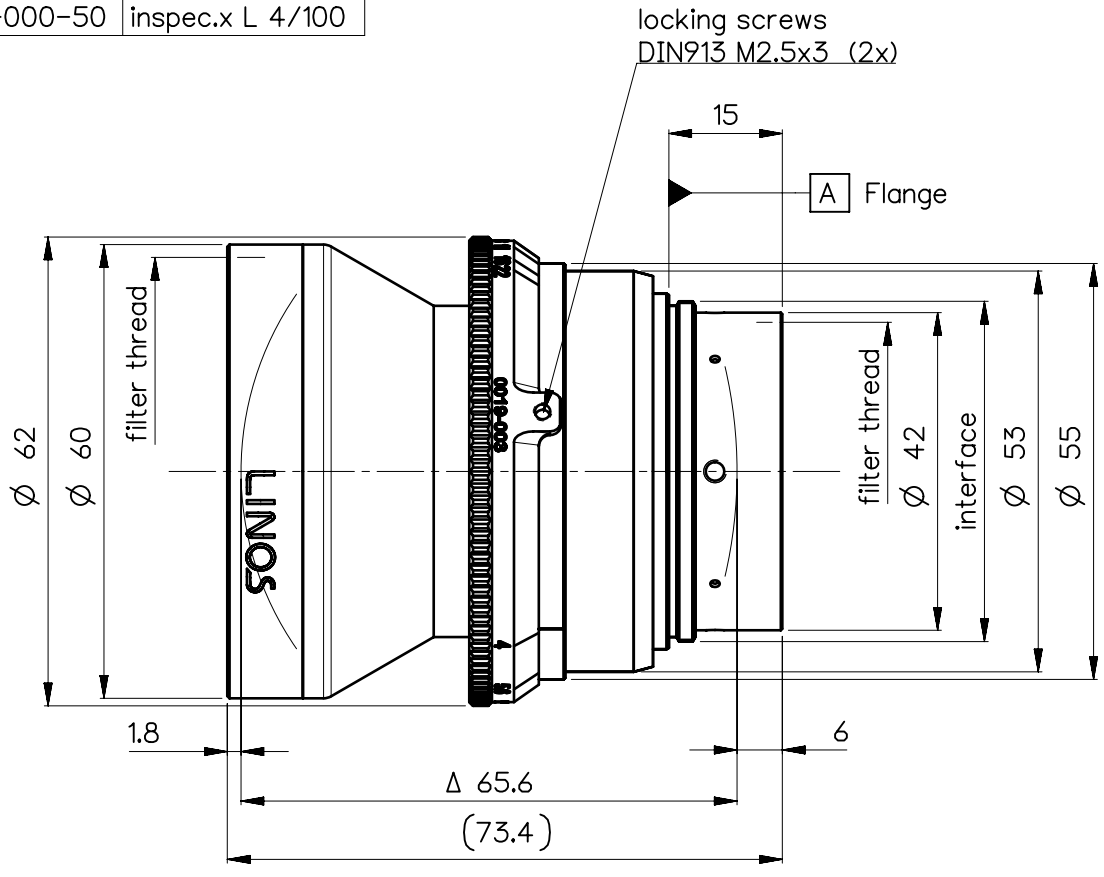
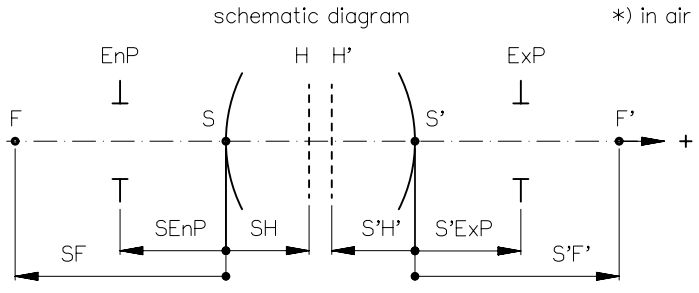


order number	lens name
0019-003-000-50	inspec.x L 4/100



Specification	ON	7722-9001	
image circle max. (mm)	70.4	working distance (mm)	553 ... ∞
focal length f' (mm)	100.0	interface	M45 x0.75
magnification β' [range]	-0.05 [-0.2 ... 0]	filter thread	M58 x0.75 / M40.5 x0.5
spectral range λ (nm)	400 - 750	weight (g)	330

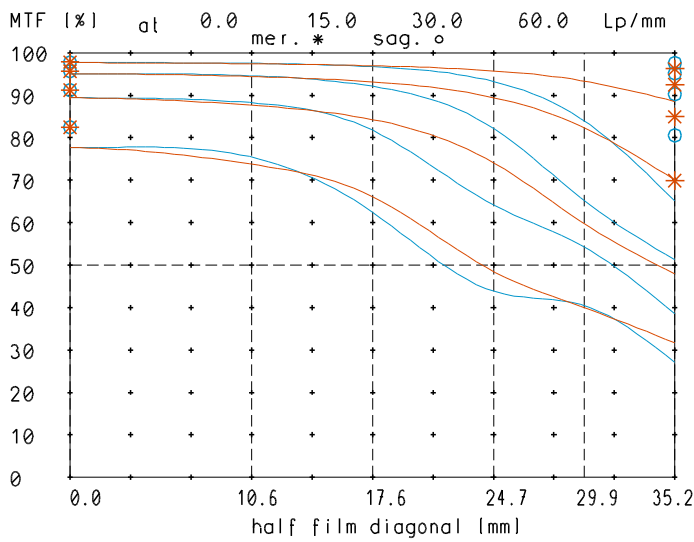


design includes CCD cover glass:	yes / 2 mm N-BK7		
SF (mm)	-55.2	f-stop	4
S'F' (mm) *	82.6	∅ EnP	23.8
HH' (mm) *	3.4	∅ Exp	23.5
SH (mm)	44.8		5.6
S'H' (mm) *	-17.4		17.9
S'EnP (mm)	46.3		17.6
S'Exp (mm) *	-15.9		12.3
			12.3
			9.1
			9.0
			6.3
			6.2
			4.6
			4.5

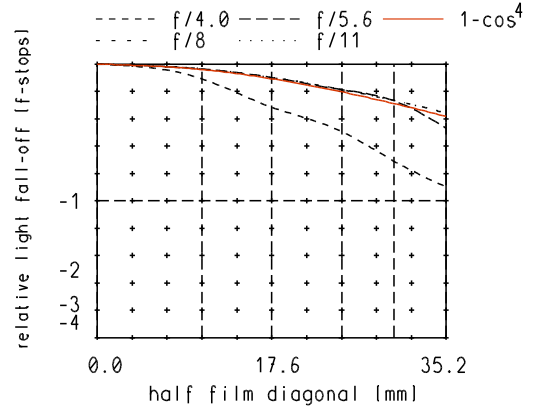
NX	EU-D	AL-T1A	US-D	US-ML	not export controlled			
				PDM Status Freigabe	-			
PROTECTIVE NOTE "DIN ISO 16016" TO BE OBSERVED	REV	ECC	DATE	APPROVED	GENERAL TOLERANCE OF DIMENSION, FORM, POS.	SURF. TREATMT	SCALE 1:1	
	a	Neuausg	19.09.18	Riegg			MATERIAL	
					BASIC TOLERANCING PRINCIPLE		TITLE	
					FIRST ISSUE	DATE	NAME	inspec.x L 4/100
				CHKD	19.09.18	Riegg		
					19.09.18	Stauder		
DIN A 4	ALL DIMENSIONS ARE IN MM AND INCLUDE SURFACE TREATMENT						DRAWING NO.	SHEET 1
							0019-003-100-50-0002a	OF 1
							REPLACES 0019-003-100-49	

inspec.x - _L_4.0/100

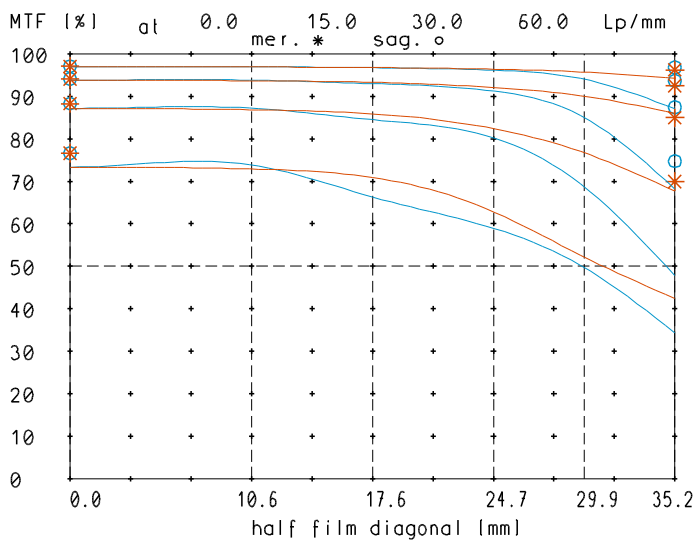
MTF at ratio -0.05 f/ 4.0



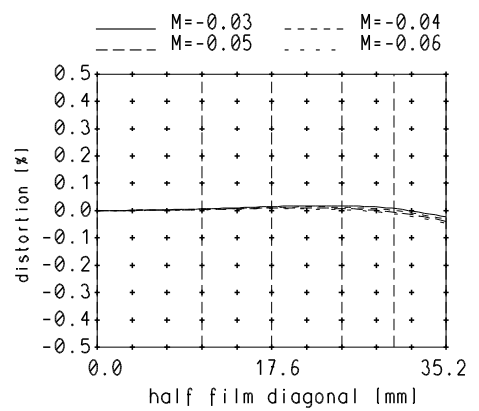
relative light fall-off at ratio -0.05



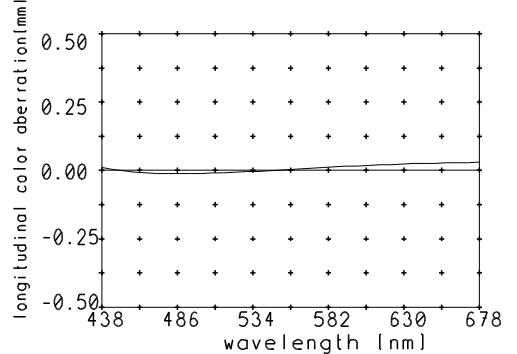
MTF at ratio -0.05 f/ 5.6



Distortion at ratio -0.03 to -0.06



Longitudinal color aberration at ratio -0.05



— sagittal, o Diffraction limited value
— meridional * Diffraction limited value

Named frequencies (line pairs/mm) in modular transfer function (MTF) as well as diagrams of relative light fall-off, distortion and longitudinal color aberration refer to film plane.