



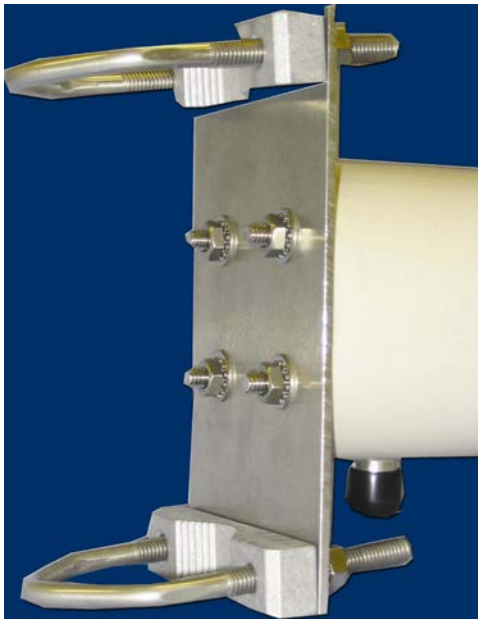
ANTENNA TECHNOLOGIES LIMITED COMPANY

Model P2409HVP

Directional Antenna

Key Features

- 2375-2500 MHz
- UV stable radome with high to front back ratios
- Wideband design to provide full coverage without field tuning
- Tubular radome reduces wind loads and increases strength in harsh environments



**V-BOLTS AND V-BLOCKS
for
MAST MOUNTING**

Electrical Specifications	P2409HVP
Frequency Range, MHz	2375-2500 MHz
Front to Back Ratio	18dB (min) 20 dB typical
Polarization	Horizontal
Gain, dBi, min	9
VSWR	1.5:1
Power	200 W

Mechanical Specifications	P2409HVP
E-Plane	55°
H-Plane	70°
Length	8"
Weight	2 lbs
Connector	N Female, Bulkhead
Mounting Hardware	Heavy duty mast mounting kit included for up to a 2.0" diameter mast.
Radome	White
Wind Survival/mph	150