

APPROVAL SHEET

WLPM444220 Series SMD Molded Power Inductor



*Contents in this sheet are subject to change without prior notice.

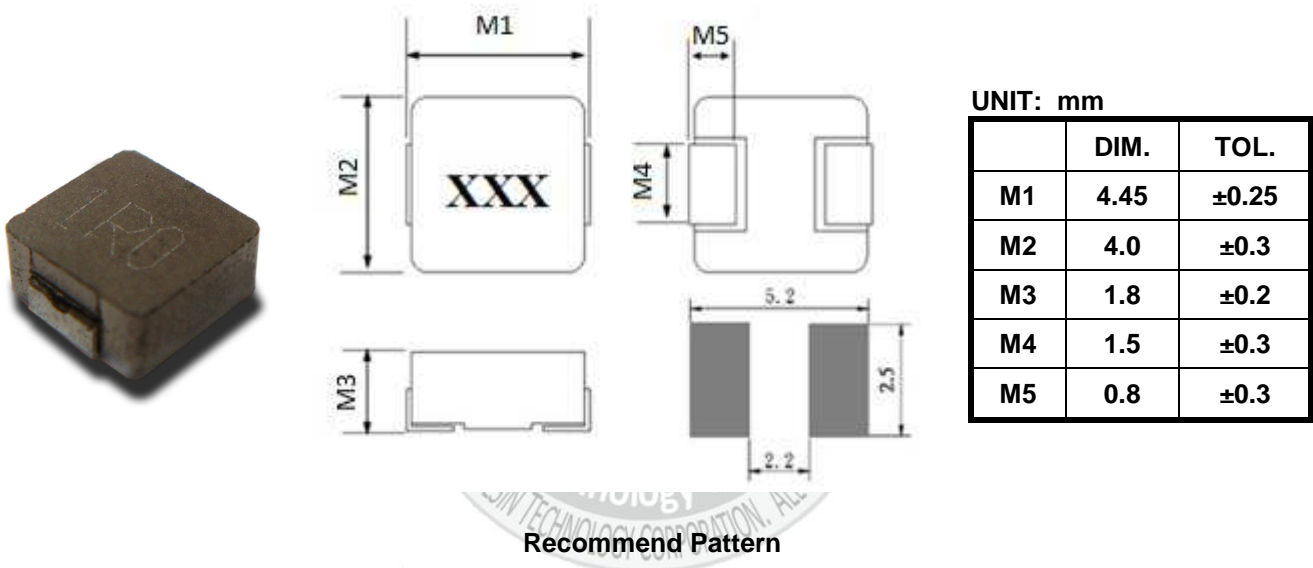
Features

1. Shielded construction.
2. Ultra low buzz noise.
3. Low DCR/ μ H.
4. Handles high transient current spikes without saturation.
5. Encapsulated body offers improved environmental protection and moisture resistance.
6. Higher dielectric withstanding voltage.
7. Corrosion resistant package.
8. RoHS Compliance.

Applications

1. PDA/Notebook/Desktop/Server applications high current and low profile power supplier
2. High current POL converters.
3. Battery powered devices.

SHAPE and DIMENSION



MARKING AND DATE CODE

Marking ex:1.0uH \rightarrow 1R0



Ordering Information

WL	PM	4442	20	M	R10	L	C
Product Code	Series	Dimensions	Thickness	Tolerance	Value	Packing Code	
WL: Inductor	SMD molded power inductor.	4.4 * 4.0mm	1.8mm	M: ± 20%	R10=0.10uH 1R0=1.0uH 100=10.0uH	L=13" Reeled (Embossed tape)	Internal code

Electrical Characteristics

WLPM444220*LC series

Walsin Part Number	L(uH)	Tolerance	Measuring Frequency (kHz),0.5V	RDC Maximum (mΩ)		Rated Current Typical (A)	I sat Typical (A)
				TYP.	MAX.		
WLPM444220MR10LC	0.10	M	100	3.5	4.0	12.0	22.0
WLPM444220MR22LC	0.22	M	100	6.0	6.6	9.0	12.5
WLPM444220MR33LC	0.33	M	100	9.6	13.0	8.0	12.0
WLPM444220MR47LC	0.47	M	100	12.5	14.0	7.0	9.5
WLPM444220MR56LC	0.56	M	100	14.0	16.0	6.5	10.0
WLPM444220MR68LC	0.68	M	100	16.0	18.0	6.0	9.0
WLPM444220M1R0LC	1.0	M	100	24.0	27.0	4.5	7.0
WLPM444220M1R2LC	1.2	M	100	24.0	27.0	4.5	7.0
WLPM444220M1R5LC	1.5	M	100	38.0	46.0	4.0	6.0
WLPM444220M2R2LC	2.2	M	100	52.0	58.0	3.0	5.0
WLPM444220M3R3LC	3.3	M	100	74.0	87.0	2.5	4.0
WLPM444220M4R7LC	4.7	M	100	98.0	110.0	2.2	3.5
WLPM444220M5R6LC	5.6	M	100	105.0	115.0	1.8	3.5
WLPM444220M6R8LC	6.8	M	100	160.0	175.0	1.5	2.5
WLPM444220M100LC	10.0	M	100	256.0	282.0	1.2	2.2

TEST INSTRUMENT: CHROMA 16502 、Zentech1320+Zentech3305

- (1). Test Freq : 100KHz , 0.5V
- (2). All test data is referenced to 25°C ambient.
- (3). Operating Temperature Range -55°C to +125°C.
- (4). Rated Current: DC current(A)that will cause an approximate ΔT of 40°C.
- (5). I sat: DC current(A)that will cause Lo to drop approximately 30%.
- (6).The part temperature(ambient +temp rise)should not exceed 125°C under worst case operating conditions. Circuit design, component placement, PWB trace size and thickness, airflow and other cooling provisions all affect the part temperature Part temperature should be verified.

RELIABILITY PERFORMANCE

Reliability Experiment For Electrical

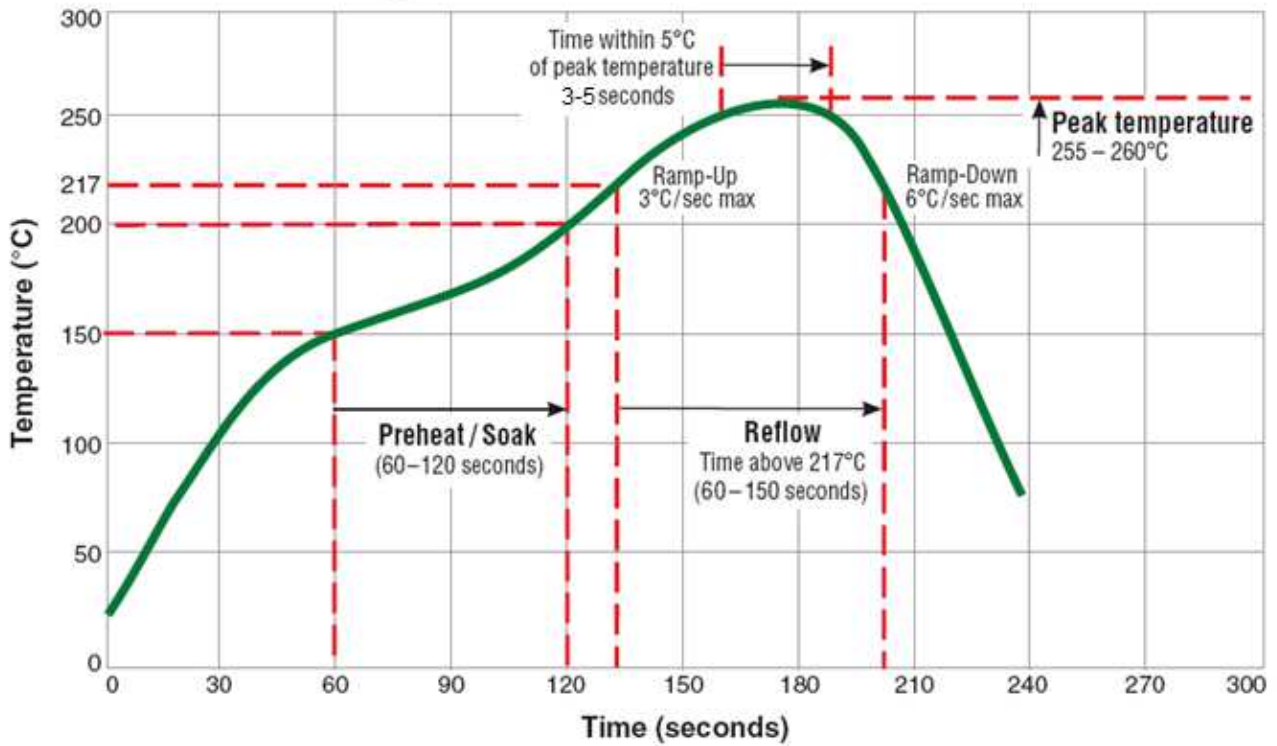
Test Item	Test Condition	Standard Source
Humidity Test	+40°C ± 2°C, humidity of 90% ± 5% (total 96 hours).	MIL-STD-202G Method 103B Test Condition B
High Temperature Test	1. Temperature: +125°C ± 2°C 2. Test time: 48 ± 2hrs	IEC 68-2 Test Condition B
Low Temperature Test	1. Temperature: -40°C ± 2°C 2. Test time: 48 ± 2hrs	IEC 68-2 Test Condition A
Thermal Shock	+125°C ± 5°C (30 minutes) ~ -40 ± 5°C (30 minutes), temperature switch time: 5 minutes (total 50 cycles).	MIL-STD-202G Method 107G Test Condition B-2
Life Test	+70°C ± 5°C (250Hours)	MIL-STD-202G Method 108A Test Condition B

Reliability Experiment For Physical

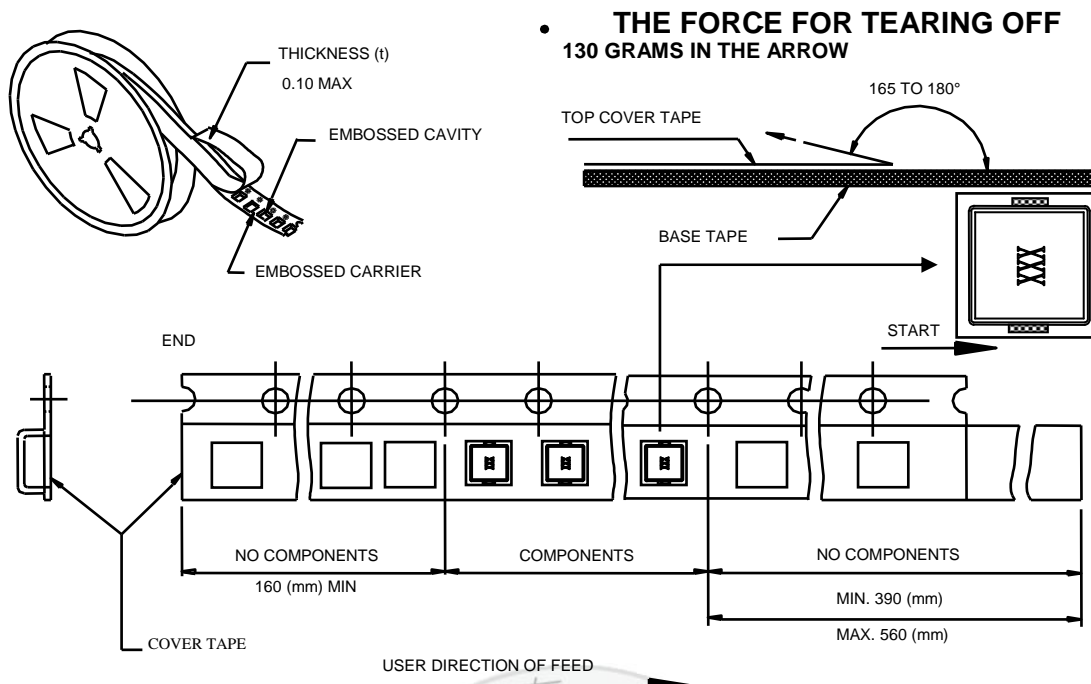
Test Item	Test Condition	Standard Source
Vibration Test	10-55-10HZ, amplitude: 1.5mm, direction: X, Y, Z axes, each axis 2 hours (total 6 hours).	MIL-STD-202G Method 201A
Solder Heat Resistance Test	IR/convection reflow: Peak Temp 250 ± 5°C for 5Sec in air, Through 2 Cycle. Temperature Ramp: +1~4°C/sec; Above 183°C, must keep 90 s - 120 s	MIL-STD-202G Method 210F Test Condition (Reflow)
Solder Ability Test	Soak in 245 °C solder pot of 3Sec, PAD must have 95% above coverage.	J-STD-003B

TYPICAL RoHS REFLOW PROFILE

Typical RoHS Reflow Profile



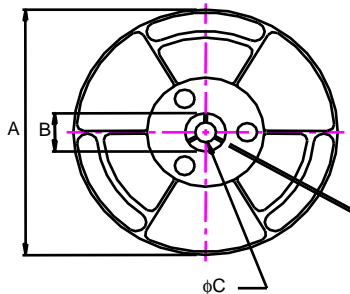
Packaging



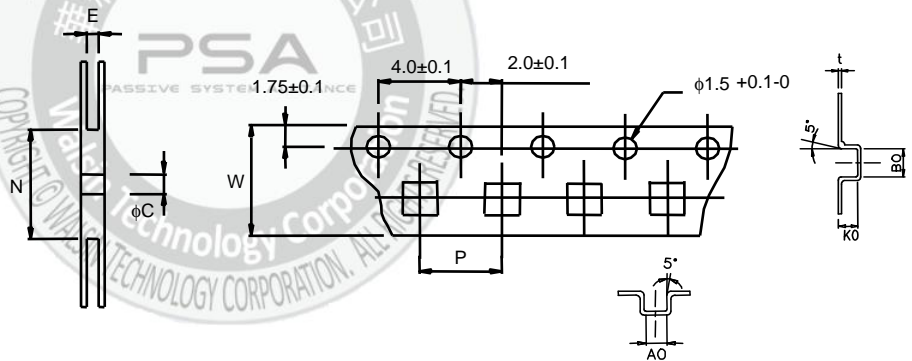
• THE FORCE FOR TEARING OFF
130 GRAMS IN THE ARROW

■ CARRIER TAPE REELS (mm)

MATERIAL: PLASTIC



■ DIMENSIONS OF CARRIER TAPE (mm)



※ 10 sprocket hole pitch cumulative tolerance ± 0.20

UNIT : mm

	A	B	C	E	N	P	W	t	A0	B0	K0
DIM.	330	25.0	13.5	13.0	100	8.0	12.0	0.3	4.7	4.4	2.5
TOL.	± 0.2	± 0.5	± 0.5	± 0.5	MIN	± 0.1	± 0.3	± 0.05	± 0.1	± 0.1	± 0.1

Quantity per reel : 2K pcs