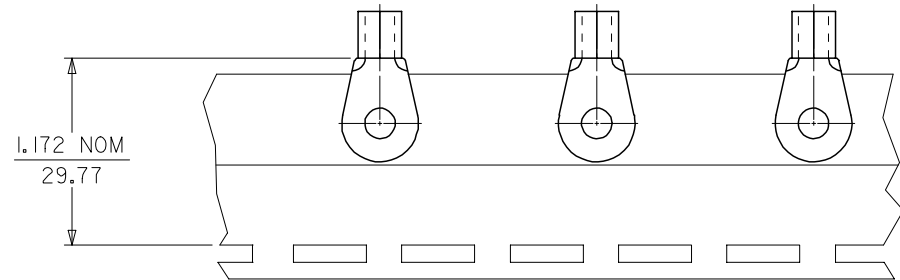
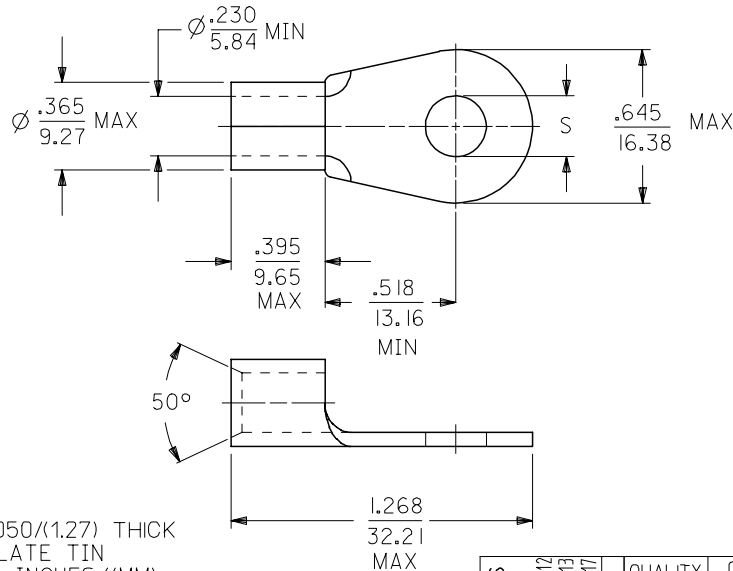


MATERIAL NUMBER	ENGINEERING NUMBER	STUD SIZE	"S"	PACKAGING
191930206	E-357-08	8	.173/(4.39)	LOOSE PIECE
191930209	E-357-10	10	.198/(5.02)	
191930212	E-357-14	1/4	.265/(6.73)	
191930219	E-357-56	5/16	.328/(8.33)	
191930216	E-357-38	3/8	.390/(9.90)	
191930223	E-357-76	7/16	.453/(11.50)	TAPE MOUNTED
191930208	E-357-08T	8	.173/(4.39)	
191930211	E-357-10T	10	.198/(5.02)	
191930215	E-357-14T	1/4	.265/(6.73)	
191930222	E-357-56T	5/16	.328/(8.33)	
191930218	E-357-38T	3/8	.390/(9.90)	
191930224	E-357-76T	7/16	.453/(11.50)	



PARTS ON TAPE  
DOUBLE SPACED AS SHOWN



- NOTE(S):
- 1. MATERIAL: COPPER .050/(1.27) THICK
  - 2. PLATING: ELECTROPLATE TIN
  - 3. ALL DIMENSIONS IN INCHES/(MM).
  - 4. WIRE SIZE: 6 AWG  
16 MM<sup>2</sup>
  - 5. PART IS ROHS COMPLIANT.

# SALES DRAWING

REVISED MATL THKNS EC NO: ETC2007-0011 DRW: NEHLE 2006/07/12 CHKD: JMACNEIL 2006/07/13 APPR: RDOERSS 2006/07/17	QUALITY SYMBOLS ▽=0 ▽=0	GENERAL TOLERANCES (UNLESS SPECIFIED)		DIMENSION STYLE IN/MM	SCALE ---	DESIGN UNITS INCH	THIRD ANGLE PROJECTION		
				mm	INCH	DRAWN BY DATE EDB 2000/11/01			
		4 PLACES ± --- ± ---	3 PLACES ± --- ± .005	CHECKED BY DATE HEB 2000/11/01			TITLE RING TONGUE TERMINAL VERSAKRIMP 6 AWG		
		2 PLACES ± 0.13 ± .01	1 PLACE ± 0.25 ± ---	APPROVED BY DATE RWD 2000/11/01					
ANGULAR ±1/2°		DRAFT WHERE APPLICABLE MUST REMAIN WITHIN DIMENSIONS		MATERIAL NO. SEE CHART	DOCUMENT NO. SD-19193-015	SHEET NO. 1 OF 1			
THIS DRAWING CONTAINS INFORMATION THAT IS PROPRIETARY TO MOLEX INCORPORATED AND SHOULD NOT BE USED WITHOUT WRITTEN PERMISSION									