

# CTSPMA6012F Series

From .47µH to 10µH



## SPECIFICATIONS

Parts are available in ±20% inductance tolerance only

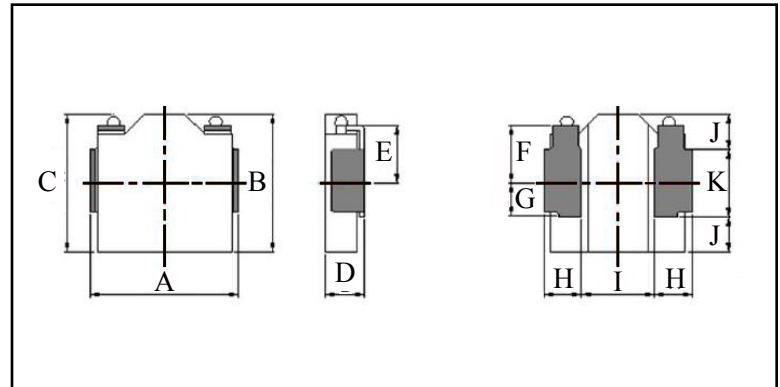
Part Number	Inductance (µH)	L Test Condition	DCR Max. (mΩ)	Isat Max. (A)	Irms Max. (A)
CTSPMA6012F-R47M	0.47	100KHz, 1V	17.1	13.8	7.0
CTSPMA6012F-R68M	0.68	100KHz, 1V	22.3	13.5	6.3
CTSPMA6012F-1R0M	1.00	100KHz, 1V	27.5	10.8	5.5
CTSPMA6012F-1R5M	1.50	100KHz, 1V	32.8	8.0	5.4
CTSPMA6012F-2R2M	2.20	100KHz, 1V	38.8	6.1	5.0
CTSPMA6012F-3R3M	3.30	100KHz, 1V	50.0	4.8	4.5
CTSPMA6012F-4R7M	4.70	100KHz, 1V	82.0	4.4	3.5
CTSPMA6012F-6R8M	6.80	100KHz, 1V	125.0	3.6	2.7
CTSPMA6012F-100M	10	100KHz, 1V	157.0	2.7	2.4

## PHYSICAL DIMENSIONS

Size	A	B	C	D	E	F
			Max.	Max.		
mm	7.1±0.2	6.7±0.2	7.1	1.2	2.7	2.7
inches	0.28±0.008	0.26±0.008	0.28	0.047	0.106	0.106
Size	G	H	I	J	K	
mm	1.5	1.65±0.1	3.8	1.85±0.1	3.0	
inches	0.059	0.065±0.004	0.150	0.073±0.004	0.118	

## CHARACTERISTICS

**Description:** SMD (shielded) Power Inductors  
**Applications:** Smart phones, Notebook PC's, Tablets, HDD's, Servers, VRM's, Compact power supply modules, etc.  
**Saturation Rated Current (Isat):** The DC current when the when the inductance becomes 30% lower than its initial value. (Ta=25°C)  
**Temperature Rise Current (Irms):** The actual current when temperature of coil becomes ΔT40°C. (Ta=25°C)  
**Operating Temperature Range:** -55°C to 155°C  
**Markings:** Inductance Code  
**Miscellaneous:** RoHS compliant  
**Samples available. See website for ordering information.**



## PAD LAYOUT

