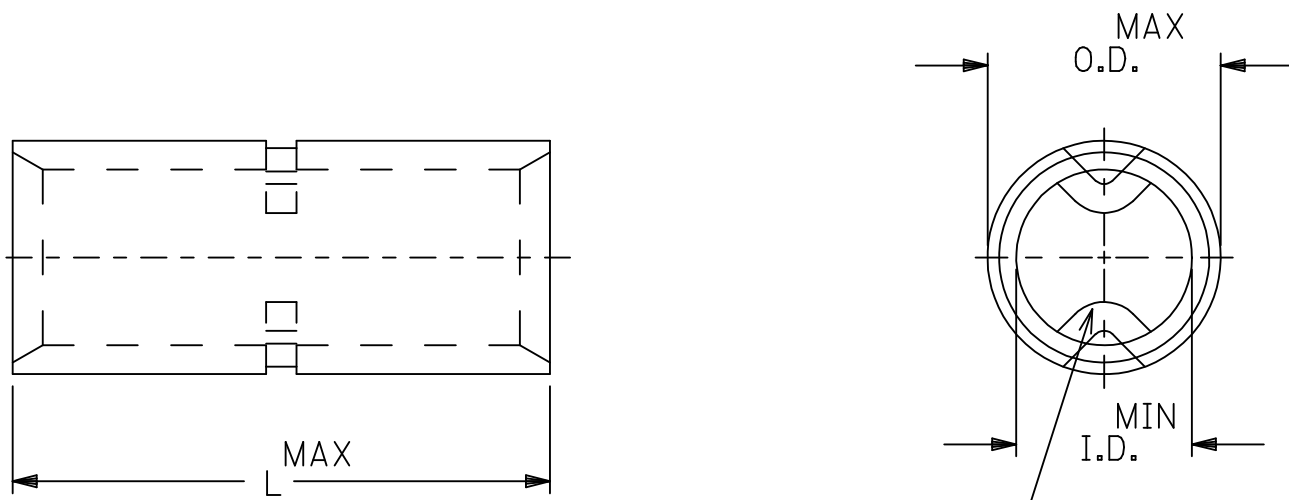


MATERIAL NO.	ENG NO.	WIRE SIZE	I.D. MIN.	O.D. MAX.	"L" MAX.	WIRE STOP QTY.
192150034	D-354	8	.165	.295	.864	ONE
192150040	E-362	6	.230	.374	1.045	ONE
192150045	F-364	4	.277	.457	1.155	ONE
192150046	G-372	2	.357	.538	1.280	ONE
192150047	H-383	1/0	.439	.620	1.440	TWO
192150048	J-388	2/0	.496	.697	1.440	TWO
192050012	K-393	3/0	.554	.760	1.540	TWO
192050013	L-378	4/0	.621	.860	1.540	TWO



WIRE STOP SEE CHART FOR QUANTITY

REDRAWN FROM DOC CD-31003  
DRAWN BY RCM 1994/03/17

<b>REDRAWN &amp; RELEASED</b> EC NO: IPG2015-2179 DRWN: GROJAS01 2015/06/30 CH'KD: JMACNEIL 2015/06/30 APPR: JMACNEIL 2015/07/16	QUALITY SYMBOLS 	GENERAL TOLERANCES (UNLESS SPECIFIED)		DIMENSION STYLE <b>INCH ONLY</b>		SCALE ---	DESIGN UNITS <b>INCH</b>	THIRD ANGLE PROJECTION		
			mm	INCH	DRAWN BY GROJAS01	DATE 2015/06/30	TITLE <b>VERSAKRIMP BUTT CONNECTORS</b>			
		4 PLACES	± ---	± ---	CHECKED BY JMACNEIL	DATE 2015/06/30				
		3 PLACES	± ---	± .005	APPROVED BY JMACNEIL	DATE 2015/07/16				
		2 PLACES	± 0.13	± .01	MATERIAL NO. <b>SEE CHART</b>	DOCUMENT NO. SD-19215-007				
1 PLACE	± 0.25	± ---	ANGULAR ± 1/2°		THIS DRAWING CONTAINS INFORMATION THAT IS PROPRIETARY TO MOLEX INCORPORATED AND SHOULD NOT BE USED WITHOUT WRITTEN PERMISSION					
0 PLACE	±	±	DRAFT WHERE APPLICABLE MUST REMAIN WITHIN DIMENSIONS							

NOTES:  
1. MATERIAL: COPPER.  
2. FINISH: TIN PLATED.  
3. PARTS ARE ROHS COMPLIANT.