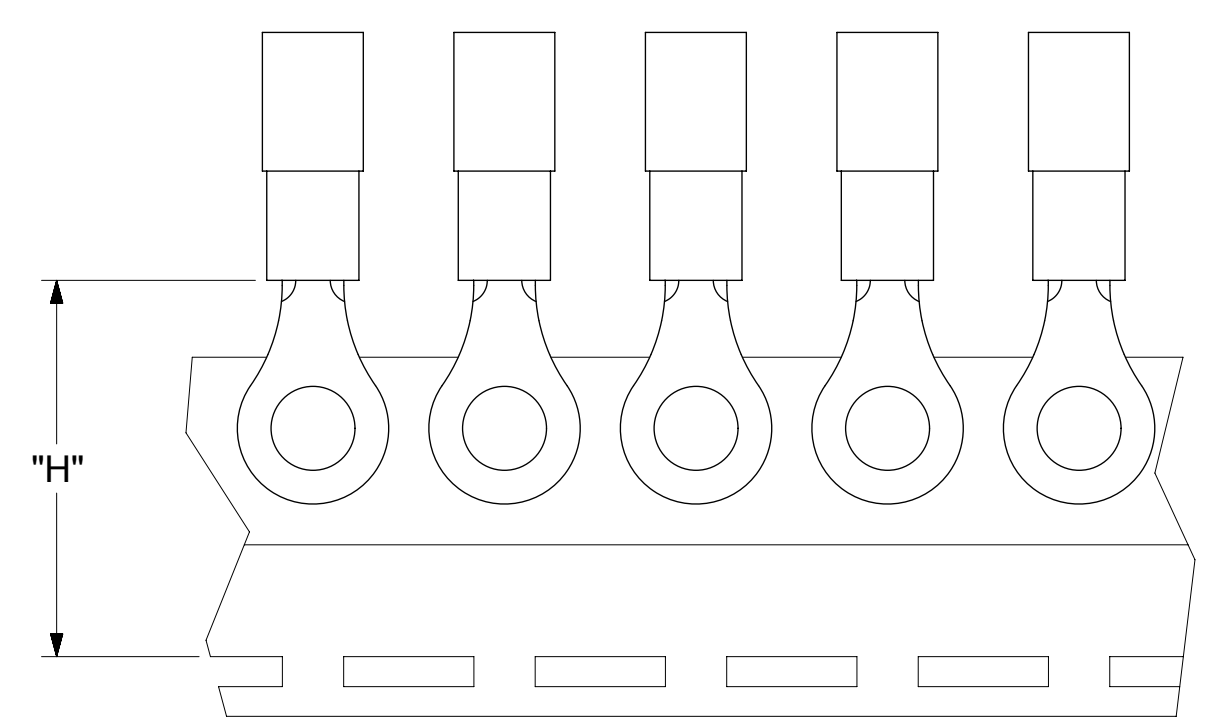
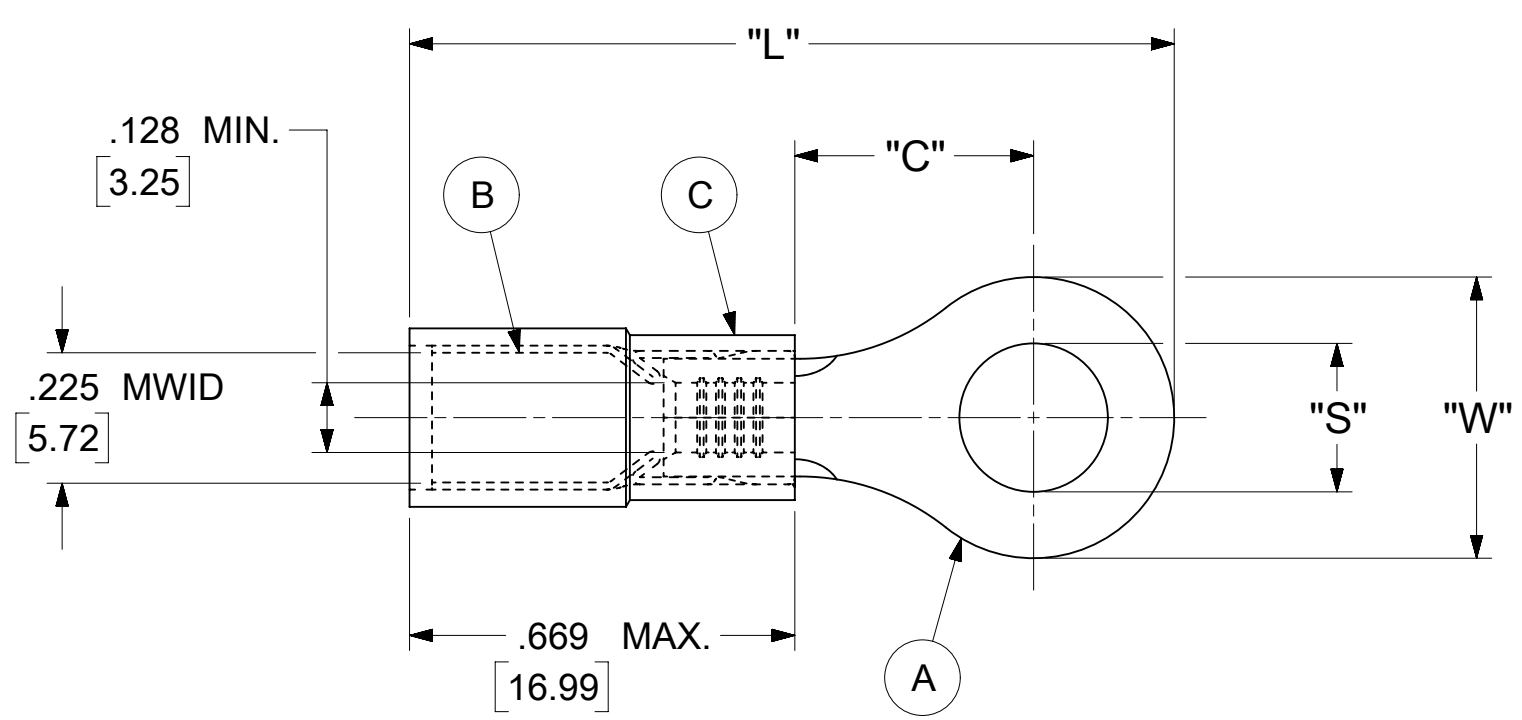


LOOSE PIECE		TAPE MOUNTED		SPECIFICATIONS						
MATERIAL NUMBER	ENGINEERING NUMBER	MATERIAL NUMBER	ENGINEERING NUMBER	STUD SIZE	"S" ±.005 [0.13]	"W" ±.010 [0.25]	"C" MIN.	"L" MAX.	"H"	STOCK ±.001 [0.025] THICKNESS
190730101	C-501-12	---	---	12	.515 [13.08]	.750 [19.05]	.611 [15.52]	1.700 [43.18]	---	.040 [1.02]
---	---	---	---	14	.265 [6.73]					
---	---	---	---	38	.390 [9.91]					
---	---	---	---	56	.328 [8.33]					
190730105	C-501-76	---	---	76	.453 [11.51]	.375 [9.53]	.303 [7.70]	1.205 [30.61]	.980 [24.89]	.040 [1.02]
190730106	C-528-04	---	---	4	.119 [3.02]					
190730108	C-528-06	---	---	6	.146 [3.71]					
190730110	C-528-08	---	---	8	.173 [4.39]					
190730113	C-528-10	190730115	C-528-10T	10	.198 [5.03]	.530 [13.46]	.393 [9.98]	1.372 [34.85]	.980 [24.89]	.040 [1.02]
190730116	C-528-209	---	---	209	.209 [5.31]					
190730117	C-530-10	---	---	10	.198 [5.03]					
190730119	C-530-14	190730121	C-530-14T	14	.265 [6.73]					
---	---	---	---	38	.390 [9.91]	.282 [7.16]	.306 [7.77]	1.161 [29.49]	.980 [24.89]	.040 [1.02]
190730123	C-530-56	190730124	C-530-56T	56	.328 [8.33]					
---	---	---	---	4	.119 [3.02]					
---	---	---	---	4	.119 [3.02]					
190730130	C-536-06	---	---	6	.146 [3.71]	.592 [15.04]	.466 [11.84]	1.476 [37.49]	1.172 [29.77]	.040 [1.02]
190730132	C-536-08	---	---	8	.173 [4.39]					
---	---	---	---	10	.198 [5.03]					
190730136	C-540-14	---	---	14	.265 [6.73]					
190730139	C-540-38	---	---	38	.390 [9.91]	.592 [15.04]	.466 [11.84]	1.476 [37.49]	1.172 [29.77]	.040 [1.02]
190730143	C-540-56	---	---	56	.328 [8.33]					
---	---	---	---	209	.209 [5.31]					
---	---	---	---	413	.413 [10.49]					

- NOTES:
- MATERIAL:
 - (A). RING TONGUE TERMINAL: COPPER
 - PLATING: ELECTRO-TIN (.0003 MIN.)
 - (B). TIN-PLATED BRASS FUNNEL FERRULE
 - (C). INSULATION: NYLON (YELLOW)
 - MWID: MAXIMUM WIRE INSULATION DIAMETER
 - WIRE SIZE: 12 -10 AWG
4.0 -6.0 MM²
 - "UL" LISTING #E32244
"CSA" LISTING #18689
 - ALL DIMENSIONS IN INCHES/[MM].
 - PARTS ARE ROHS COMPLIANT.
 - DIMS. SHOWN ARE FOR REFERENCE ONLY.



PARTS ON TAPE

THIS DRAWING CONTAINS INFORMATION THAT IS PROPRIETARY TO MOLEX ELECTRONIC TECHNOLOGIES, LLC AND SHOULD NOT BE USED WITHOUT WRITTEN PERMISSION													
SYMBOLS		DIMENSION UNITS		SCALE		CURRENT REV DESC: MIGRATION TO ECTR/NX							
∇ = 0	INCH/MM	NTS		EC NO: 619818 DRWN: ABENJAMINLW 2019/06/20 CHK'D: GROJAS01 2019/06/27 APPR: JMACNEIL 2019/07/10 INITIAL REVISION: DRWN: JJ 1984/11/15 APPR: JMACNEIL 2019/07/10									
∇ = 0	GENERAL TOLERANCES (UNLESS SPECIFIED)												
∇ = 0		MM	INCH										
∇ = 0	4 PLACES	±	±										
∇ = 0	3 PLACES	±	± 0.005										
∇ = 0	2 PLACES	± 0.13	± 0.01										
∇ = 0	1 PLACE	± 0.25	±										
∇ = 0	0 PLACES	±	±										
∇ = 0	ANGULAR TOL ± 0.5 °			THIRD ANGLE PROJECTION		DRAWING		SERIES					
∇ = 0	DRAFT WHERE APPLICABLE MUST REMAIN WITHIN DIMENSIONS			C-SIZE		19073		MATERIAL NUMBER			DOC TYPE	DOC PART	REVISION
DOCUMENT STATUS		P1	RELEASE DATE	2019/07/10	15:39:30	SEE TABLE		GENERAL MARKET		1 OF 1			



RING TONGUE TERMINAL
AVIKRIMP 500-SERIES

PRODUCT CUSTOMER DRAWING

DOCUMENT NUMBER	DOC TYPE	DOC PART	REVISION
190730101	PSD	000	A

MATERIAL NUMBER	CUSTOMER	SHEET NUMBER
SEE TABLE	GENERAL MARKET	1 OF 1