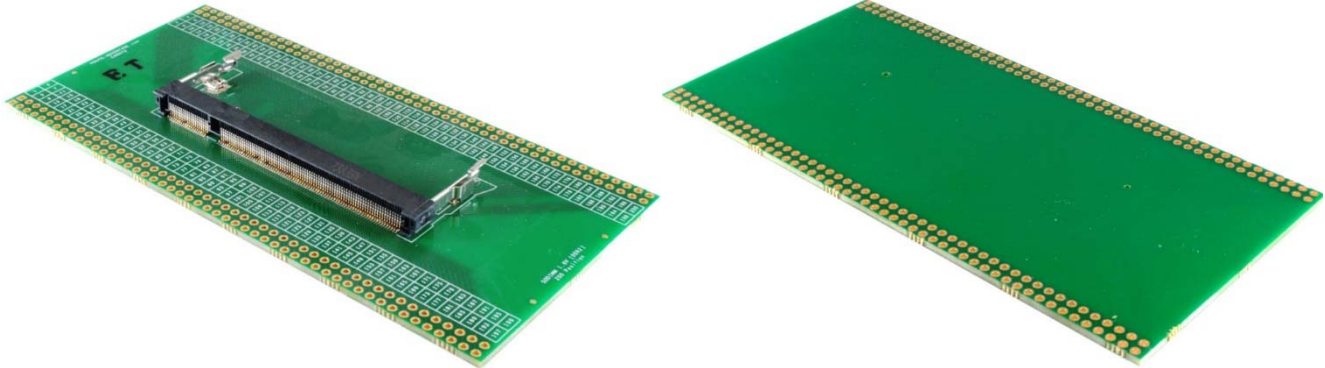


## 200 Position SODIMM DDR2 (1.8V) SDRAM adapter board



### Product Highlights

This adapter comes assembled with connector as shown.

### Specifications

|  |   |
|--|---|
| PCB dimensions:                                      | 5.05" x 2.5" x 0.063" (128.27mm x 63.5mm x 1.6mm) |
| PCB construction:                                    | FR-4 UL94V-0                                      |
| PCB operating temperature range (without connector): | -40°C to +130°C                                   |
| PCB reflow maximum temperature (without connector):  | +260°C  |
| PCB assembly standard:                               | IPC-A-610 Class II                                |