

4516B

UP/DOWN COUNTER

DESCRIPTION — The 4516B is an edge-triggered synchronous Up/Down 4-Bit Binary Counter with a Clock Input (CP), an active HIGH Count Up/Down Control Input (Up/Dn), an active LOW count Enable Input (CE), an asynchronous active HIGH Parallel Load Input (PL), four Parallel Inputs (P₀-P₃), four parallel Outputs (Q₀-Q₃), an active LOW Terminal Count Output (TC) and an overriding asynchronous Master Reset Input (MR).

Information on the Parallel Inputs (P₀-P₃) is loaded into the counter while the Parallel Load Input (PL) is HIGH, independent of all other input conditions except the Master Reset Input (MR) which must be LOW. When the Parallel Load Input (PL) and the Count Enable Input (CE) are LOW, the counter changes on the LOW-to-HIGH transition of the Clock Input (CP). The Count Up/Down Control Input (Up/Dn) determines the direction of the count, HIGH for counting up, LOW for counting down. When counting up, the Terminal Count Output (TC) is LOW when Q₀ = Q₁ = Q₂ = Q₃ = HIGH and CE = LOW. When counting down the Terminal Count Output (TC) is LOW when Q₀ = Q₁ = Q₂ = Q₃ = LOW and the CE = LOW. A HIGH on the Master Reset Input (MR) resets the counter (Q₀ = Q₁ = Q₂ = Q₃ = LOW) independent of all other input conditions.

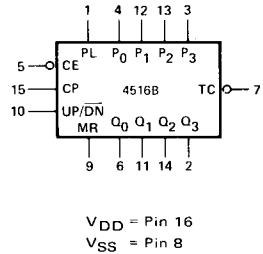
- UP/DOWN COUNT CONTROL
- SINGLE CLOCK INPUT (L→H EDGE-TRIGGERED)
- ASYNCHRONOUS PARALLEL LOAD INPUT
- ASYNCHRONOUS MASTER RESET

MODE SELECTION TABLE

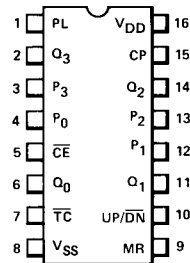
PL	UP/DN	CE	CP	MODE
H	X	X	X	Parallel Load (P _n → Q _n)
L	X	H	X	No Change
L	L	L	↯	Count Down, Binary
L	H	L	↷	Count Up, Binary

MR = LOW X = Don't Care
H = HIGH Level ↷ = Positive-Going
L = LOW Level ↯ = Transition

LOGIC SYMBOL



**CONNECTION DIAGRAM
DIP (TOP VIEW)**

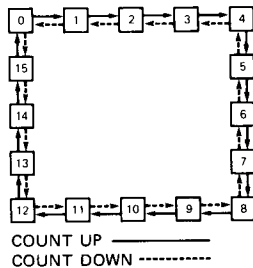


NOTE:
The Flatpak version has the same pin-outs (Connection Diagram) as the Dual In-line Package.

PIN NAMES

- PL Parallel Load Input (Active HIGH)
- P₀-P₃ Parallel Inputs
- CE Count Enable Input (Active LOW)
- CP Clock Pulse Input (L→H Edge-Triggered)
- Up/Dn Up/Down Count Control Input
- MR Master Reset Input
- TC Terminal Count Output (Active LOW)
- Q₀-Q₃ Parallel Outputs

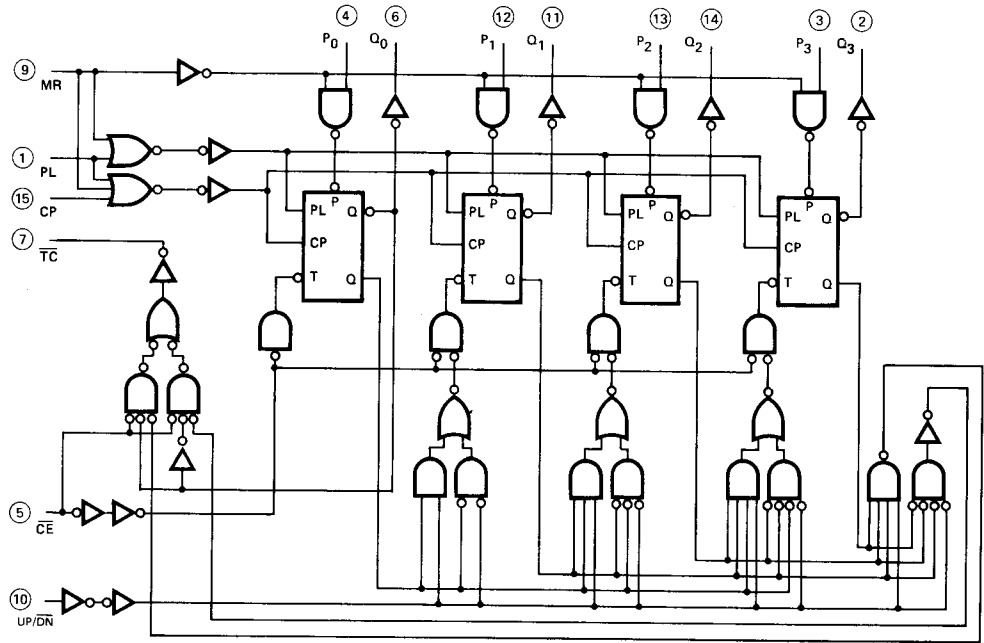
STATE DIAGRAM



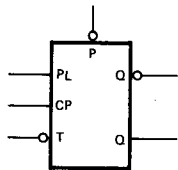
LOGIC EQUATION FOR TERMINAL COUNT

$$TC = \overline{CE} \cdot [(UP/DN) \cdot Q_0 \cdot Q_1 \cdot Q_2 \cdot Q_3] + [(UP/DN) \cdot \overline{Q_0} \cdot \overline{Q_1} \cdot \overline{Q_2} \cdot \overline{Q_3}]$$

LOGIC DIAGRAM



V_{DD} = Pin 16
 V_{SS} = Pin 8
 ○ = Pin Number



PL (Parallel Load Input) — Asynchronously Loads P into Q, Overriding all Other Inputs
 \bar{P} (Parallel Input) — Data on this Pin is Asynchronously Loaded into Q, when PL is HIGH Overriding all Other Inputs
 \bar{T} (Toggle Input) — Forces the Q Output to Synchronously Toggle when a HIGH is placed on this Input
 CP (Clock Pulse Input)
 Q, \bar{Q} (True and Complementary Outputs)

DC CHARACTERISTICS: V_{DD} as shown, V_{SS} = 0 V (See Note 1)

SYMBOL	PARAMETER	LIMITS									UNITS	TEMP	TEST CONDITIONS				
		V _{DD} = 5 V			V _{DD} = 10 V			V _{DD} = 15 V									
		MIN	TYP	MAX	MIN	TYP	MAX	MIN	TYP	MAX							
I _{DD}	Quiescent Power	XC			20			40			80	μA	MIN, 25°C MAX	All inputs at 0 V or V _{DD}			
					150			300			600						
	Supply Current	XM			5			10			20				μA	MIN, 25°C MAX	
					150			300			600						

Notes on following page

FAIRCHILD CMOS • 4516B

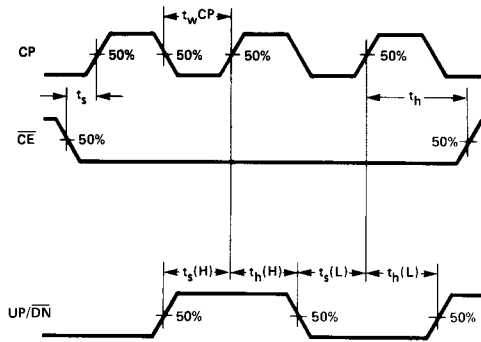
AC CHARACTERISTICS AND SET-UP REQUIREMENTS: V_{DD} as shown, $V_{SS} = 0 V$, $T_A = 25^\circ C$ (See Note 2)

SYMBOL	PARAMETER	LIMITS									UNITS	TEST CONDITIONS
		$V_{DD} = 5 V$			$V_{DD} = 10 V$			$V_{DD} = 15 V$				
		MIN	TYP	MAX	MIN	TYP	MAX	MIN	TYP	MAX		
t_{PLH} t_{PHL}	Propagation Delay, CP to Q_n		150	350		62	160		41	128	ns	$C_L = 50 pF$, $R_L = 200 k\Omega$ Input Transition Times $\leq 20 ns$
t_{PLH} t_{PHL}	Propagation Delay, CP to \overline{TC}		167	450		71	180		48	144	ns	
t_{PLH} t_{PHL}	Propagation Delay, PL to Q_n		170	325		70	150		45	120	ns	
t_{PLH} t_{PHL}	Propagation Delay, MR to Q_n, \overline{TC}		225	500		170	210		105	168	ns	
t_{TLH} t_{THL}	Output Transition Time		60	135		31	75		23	45	ns	
t_{wCP}	CP Minimum Pulse Width	125	50		60	21		48	14		ns	
t_{wPL}	PL Minimum Pulse Width	150	60		60	21		48	16		ns	
t_{wMR}	MR Minimum Pulse Width	150	60		60	30		48	20		ns	
t_{rec}	MR Recovery Time	175	75		70	30		56	20		ns	
t_{rec}	PL Recovery Time	150	62		60	24		48	17		ns	
t_s	Set-Up Time, UP/DN to CP	325	145		140	55		110	38		ns	
t_h	Hold Time, UP/DN to CP	0	-90		0	-35		0	-25		ns	
t_s	Set-Up Time, \overline{CE} to CP	275	118		120	49		96	33		ns	
t_h	Hold Time, \overline{CE} to CP	0	-40		0	-15		0	-10		ns	
t_s	Set-Up Time, P_n to PL	70	29		30	11		24	8		ns	
t_h	Hold Time, P_n to PL	0	-40		0	-20		0	-20		ns	
f_{MAX}	Input Clock Frequency (Note 3)	2	5		5	12		6	15		MHz	

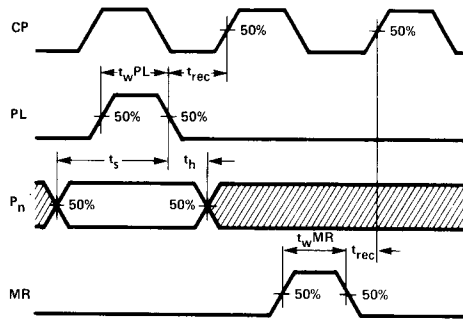
NOTES:

1. Additional DC Characteristics are listed in this section under 4000B Series CMOS Family Characteristics.
2. Propagation Delays and Output Transition Times are graphically described in this section under 4000B Series CMOS Family Characteristics.
3. For f_{MAX} , input rise and fall times are greater than or equal to 5 ns and less than or equal to 20 ns.
4. It is recommended that input rise and fall times to the Clock Input be less than 15 μs at $V_{DD} = 5 V$, 4 μs at $V_{DD} = 10 V$, and 3 μs at $V_{DD} = 15 V$.

SWITCHING WAVEFORMS



MINIMUM CP WIDTH, SET-UP AND HOLD TIMES, CE TO CP AND UP/DN TO CP



MINIMUM PL AND MR PULSE WIDTH, RECOVERY TIME FOR PL AND MR, AND SET-UP AND HOLD TIMES, P_n TO PL

NOTE:
Set-up and Hold Times are shown as positive values but may be specified as negative values.