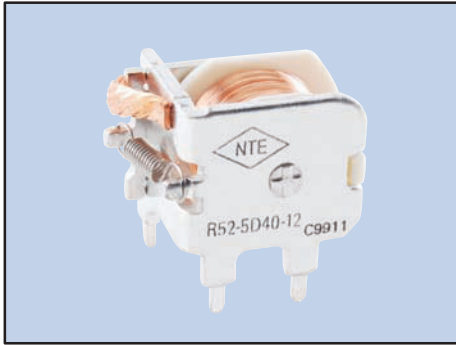


# Automotive Relays

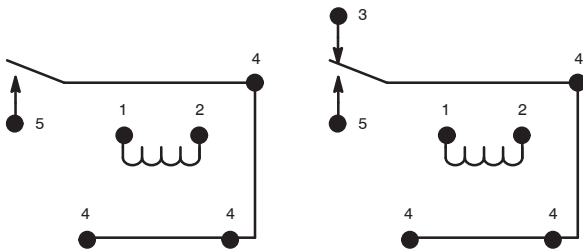
## R52 Series

### Features

- P.C. Board Mountable
- Standard U.S. Footprint
- Subminiature Size
- Open Frame
- SPST & SPDT Versions



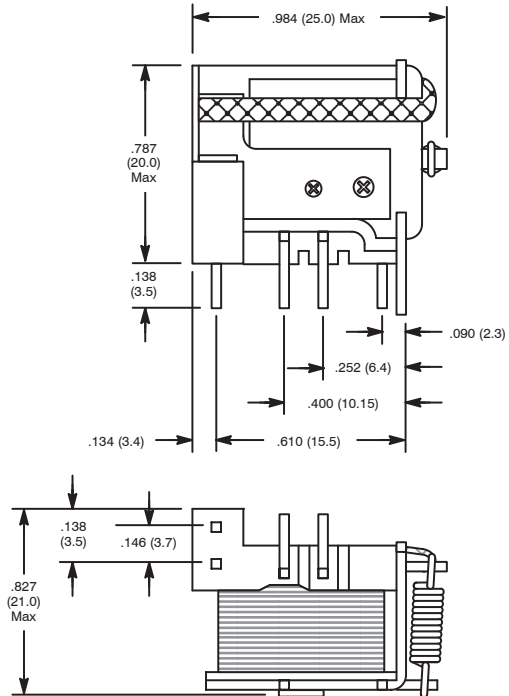
### SPST-NO, 1 Form "A" SPDT, 1 Form "C"



DC OPERATED						
NTE Type No.	Nom. Volt.	Contact Arr.	Coil Res. Ohms (Typ)	Nom. Power	Max. Contact Cur. @ 14VDC	Diag No.
R52-1D40-12	12VDC	SPST-NO	120	1.2W	40A	D48
R52-5D40-12	12VDC	SPDT	120	1.2W	40A	D48

## Subminiature, 40 Amp, PC Mountable, Heavy Duty Automotive Relay.

### D48



## Electrical Specifications

### Contact

**Rating:** 40 Amp @ 14VDC  
**Max. Switching Voltage:** 60VAC, 75VDC  
**Resistance:** 50mΩ Max  
**Material:** AgSnO<sub>2</sub>

### Coil

**Coil Voltages:** See Chart  
**Pick-up Voltages:** 70% of rated voltage  
**Drop-out Voltages:** 10% of rated voltage  
**Max. Allowable Voltage:** 120% of rated voltage  
**Resistance:** See Chart

### Operational Characteristics

**Timing Values:** . . . . **Operate Time:** 10 mS typ  
**Release Time:** 10 mS typ

### Insulation Characteristics

#### Dielectric Strength

**Between Coil & Contacts:** 750 VRMS  
**Between Contacts:** 750 VRMS  
**Insulation Resistance:** 100MΩ Min

### Environmental Characteristics

**Operating:** -30°C to +85°C

### Life

**Mechanical:** 10 x 10<sup>6</sup> (No Load)  
**Electrical:** 10 x 10<sup>4</sup> (Resistive Load)

### Weight

**Std:** 0.63 oz (18 grams) approx