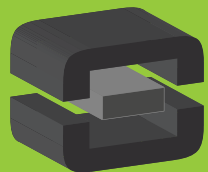


From Off-The-Shelf to Market-Ready© New Age Enclosures is your Single Source Solution.  
Let us quote modifying our Stock Enclosures to meet your end-use.  
visit [newageenclosures.com/services](http://newageenclosures.com/services) or call 855-4NA-ENCL today.

**CNC CUTOUTS**  
**PART DECORATING**  
**CUSTOM COLOR AND MATERIAL**  
**RF/EMI SHEILDING**  
**CUSTOM TOOL INSERTS**  
**CUSTOM ENCLOSURES AND DESIGN**



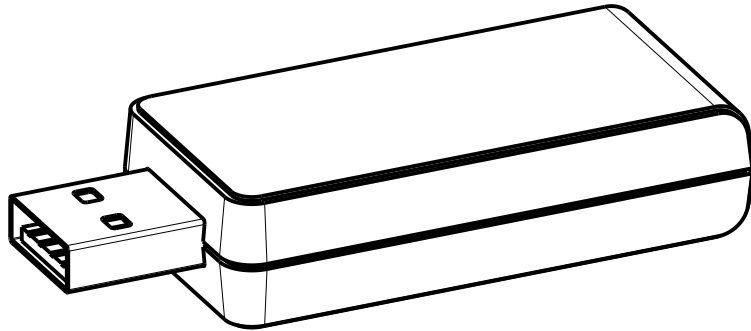
**NEW AGE**  
**ENCLOSURES**

DEVELOP THE FUTURE



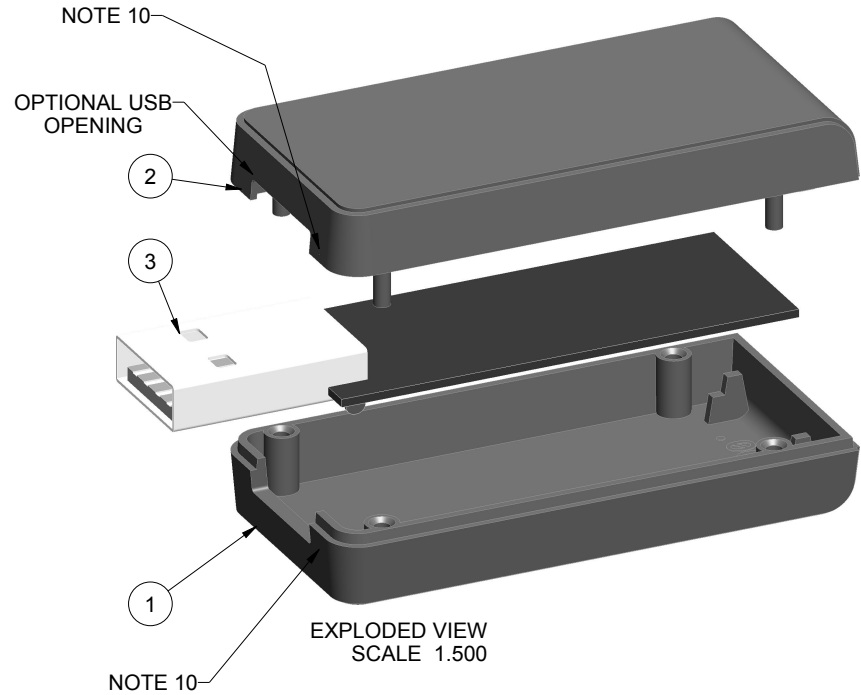
**NOTES: UNLESS OTHERWISE SPECIFIED**

- CORNERS DRAWN SHARP TO BE R.005 MAXIMUM.
- EXTERIOR SURFACE TEXTURE TO BE LIGHT EDM FINISH. EQUIVELANT TO MT-11010.
- INTERIOR SURFACE TEXTURE: NONE
- ALL INSIDE RADII .010R. UNLESS OTHERWISE SPECIFIED.
- ALL EXTERNAL DIMENSIONS AFFECTED BY THE DRAFT APPLY AT THE LARGE END OF THE FEATURE, AND ALL INTERNAL FEATURES AFFECTED BY THE DRAFT APPLY AT THE SMALL END OF THE FEATURE UNLESS OTHERWISE SPECIFIED.
- 1 DEGREES DRAFT IN THE DIRECTION OF PULL IS PERMISSIBLE UNLESS OTHERWISE SPECIFIED.
- THIS ENCLOSURE IS A PRESS FIT ASSEMBLY. FOR PERMANENT CLOSURE: A DROP ADHESIVE OR ULTRASONIC WELDING IS REQUIRED.
- MATERIAL / COLOR: ABS PLASTIC IS STANDARD IN BLACK OR WHITE. CUSTOM MATERIALS AND COLORS ARE AVAILABLE UPON REQUEST FOR QUOTE.
- PCB SIZES ARE RECOMMENDATIONS ONLY. FINAL SIZES AND VERIFICATION OF IT'S FIT ARE THE SOLE RESPONSIBILITY OF EACH OWNER.
- THE GATE REMNANT FOR THIS ENCLOSURE IS LOCATED IN THIS POSITION TO MINIMIZE ANY COSMETIC IMPACT. IT IS HOWEVER VISIBLE AND VARIES IN SIZE / SHAPE. IT IS EASILY REMOVED WITH CLIPPERS. IF YOU WOULD LIKE NEW AGE TO CLIP THIS FOR YOU, PLEASE ASK YOUR SALES REPRESENTIVE FOR A FREE QUOTE.



SCALE 1.500

| R E V I S I O N |          |        |   |           |          |
|-----------------|----------|--------|---|-----------|----------|
| REV.            | DRAWN BY | ECO No | DESCRIPTION                               | DATE      | APPROVED |
| 1               | M BOYER  |        | PRELIMINARY RELEASE                       | 21-May-07 | D.C.     |
| 2               | M BOYER  |        | ADD WIDE PCB CONFIGURATION                | 06-Jun-07 | D.C.     |
| 3               | M BOYER  |        | MOVE PCB POSTS OUTWARD .03 PER SIDE       | 30-Jul-07 | D.C.     |
| 4               | M BOYER  |        | UPDATE TO AS BUILT                        | 12-Oct-07 | D.C.     |
| 5               | M BOYER  | 0208   | UPDATE FORMAT AND RELEASE                 | 04-Apr-08 | D.C.     |
| 5.1             | M BOYER  | 0710   | UPDATE FORMAT                             | 30-Mar-10 | D.C.     |
| 5.2             | M BOYER  | 0810   | ADD NOTE 10                               | 08-Apr-10 | D.C.     |
| 6.0             | M BOYER  | 2910   | UPDATE BOARD THICKNESS INFORMATION        | 16-Aug-10 | D.C.     |
| 6.1             | M BOYER  | 3010   | DOCUMENT CHANGE                           | 24-Aug-10 | D.C.     |
| 6.2             | M BOYER  | 2711   | CHANGE ASSEMBLY DIMENSIONS TO "PRESS FIT" | 21-Oct-11 | D.C.     |
| 7.0             | M BOYER  | 1913   | INCLUDE .062" PCB OPTION                  | 09-Apr-13 | D.C.     |
| 7.1             | R CRUZ   | 8713   | REMOVE .062" COVER OPTION                 | 18-Dec-13 |          |



EXPLODED VIEW  
SCALE 1.500

| P201005(x) CONFIGURATIONS              |    |    |      |      |
|--|----|----|------|------|
|  | -S | -U | -62S | -62U |
| 201005 COVER                           | 1  |    | 1    |      |
| 201005 COVER w/ USB OPENING            |    | 1  |      | 1    |
| 201005 BASE                            | 1  |    |      |      |
| 201005 BASE (.062" PCB)                |    |    | 1    |      |
| 201005 BASE w/ USB OPENING             |    | 1  |      |      |
| 201005 BASE (.062" PCB) w/ USB OPENING |    |    |      | 1    |

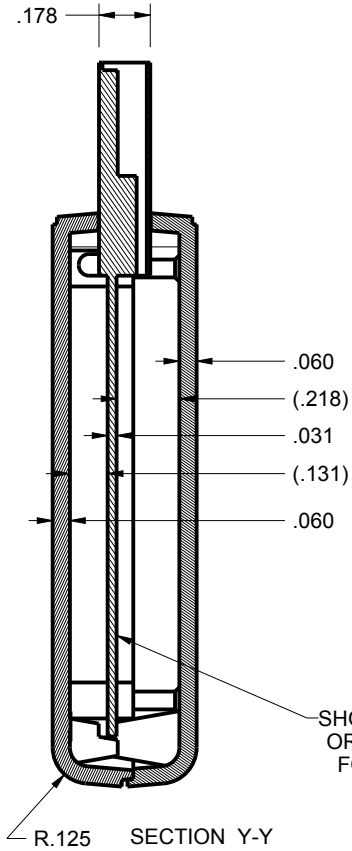
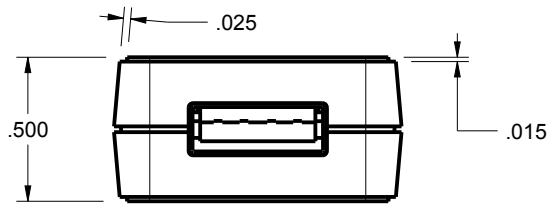
| ITEM | FILE NAME    | DESCRIPTION              | MATERIAL    | COLOR             | QTY. |
|------|--------------|--------------------------|-------------|-------------------|------|
| 3    | 201005_PCB   | 201005 PCB - REFERENCE   | .031" THICK | CUSTOMER SUPPLIED | 1    |
| 2    | 201005_COVER | 201005U COVER - STANDARD | ABS         | BLACK or WHITE    | 1    |
| 1    | 201005_BASE  | 201005U BASE - STANDARD  | ABS         | BLACK or WHITE    | 1    |

**BILL OF MATERIALS**

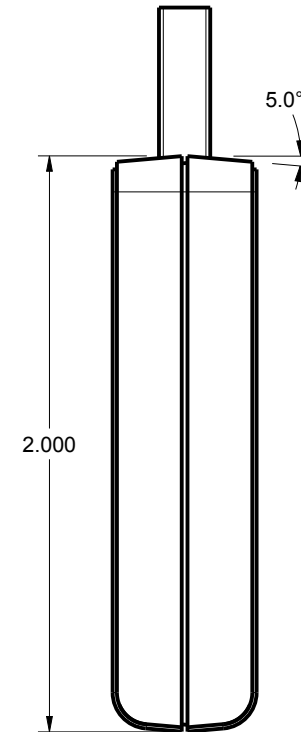
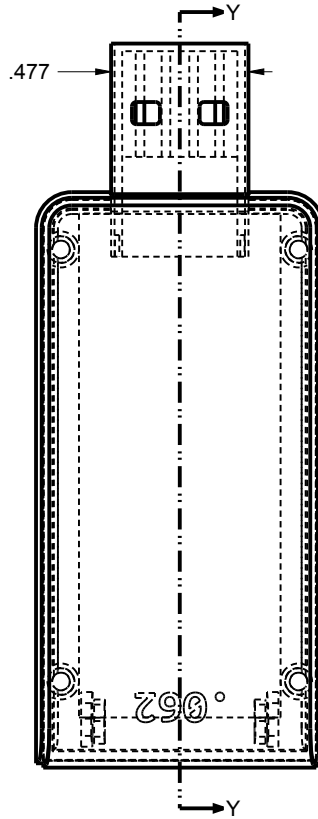
|   |   |  |
|---|---|--|
| THIRD ANGLE PROJECTION<br>DO NOT SCALE DRAWING                  | TOLERANCES: UNLESS OTHERWISE SPECIFIED<br>DIMENSIONS ARE IN U.S. INCHES.<br>X.XX = .015 X.XXXX = .001<br>X.XXX = .010 X.X" = 1° | <b>NEW AGE ENCLOSURES</b><br>2240 South Thornburg Street Santa Maria, CA. 93455<br>ph. (805) 595-1310 fax (805) 595-1024<br><a href="http://www.newageenclosures.com">www.newageenclosures.com</a> |
|   | Customer's Part No: 201005X   |  |
| APPROVAL BY DATE<br>CHECK _____<br>ENG. _____<br>SCALE AS NOTED | DRAWN BY<br>M BOYER 2007-May-21   | SIZE A<br>DRAWING NAME<br>201005_R7_1  |
| STANDARD - USB DEVICE<br>PXX-201005X-XXX                        |   | SHEET 1 OF 6<br>REV.DOC 7.1  |

NOTICE: THE INFORMATION AND DATA CONTAINED HEREIN IS CONSIDERED PROPRIETARY TO ALLTEC INTEGRATED MFG INC & SHALL REMAIN THE EXCLUSIVE PROPERTY OF ALLTEC INTEGRATED MFG INC. THE HOLDER WILL ASSUME CUSTODY AND CONTROL THAT THIS DOCUMENT WILL NOT BE COPIED, REPRODUCED, OR DISCLOSED WITHOUT THE EXPRESS WRITTEN CONSENT OF ALLTEC INTEGRATED MFG INC. THIS DOCUMENT DOES NOT CONSTITUTE A GRANT TO MANUFACTURE ANY ITEMS. © 2017

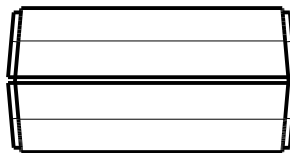
# 201005 X ASSEMBLY



SHOWN WITH .031" PCB  
ORDER "-62" VERSION  
FOR OPTIONAL PCB  
THICKNESS



SCALE 1.500



TOLERANCES: UNLESS OTHERWISE SPECIFIED  
DIMENSIONS ARE IN U.S. INCHES.  
X.XX = .015 X.XXXX = .001  
X.XXX = .010 X.X° = 1°

NEW AGE ENCLOSURES

Customer's Part No: 201005X

|          |          |      |
|----------|----------|------|
| APPROVAL | BY       | DATE |
| CHECK    |          |      |
| ENG.     |          |      |
| SCALE    | AS NOTED |      |

DRAWN BY  
M BOYER 2007-May-21

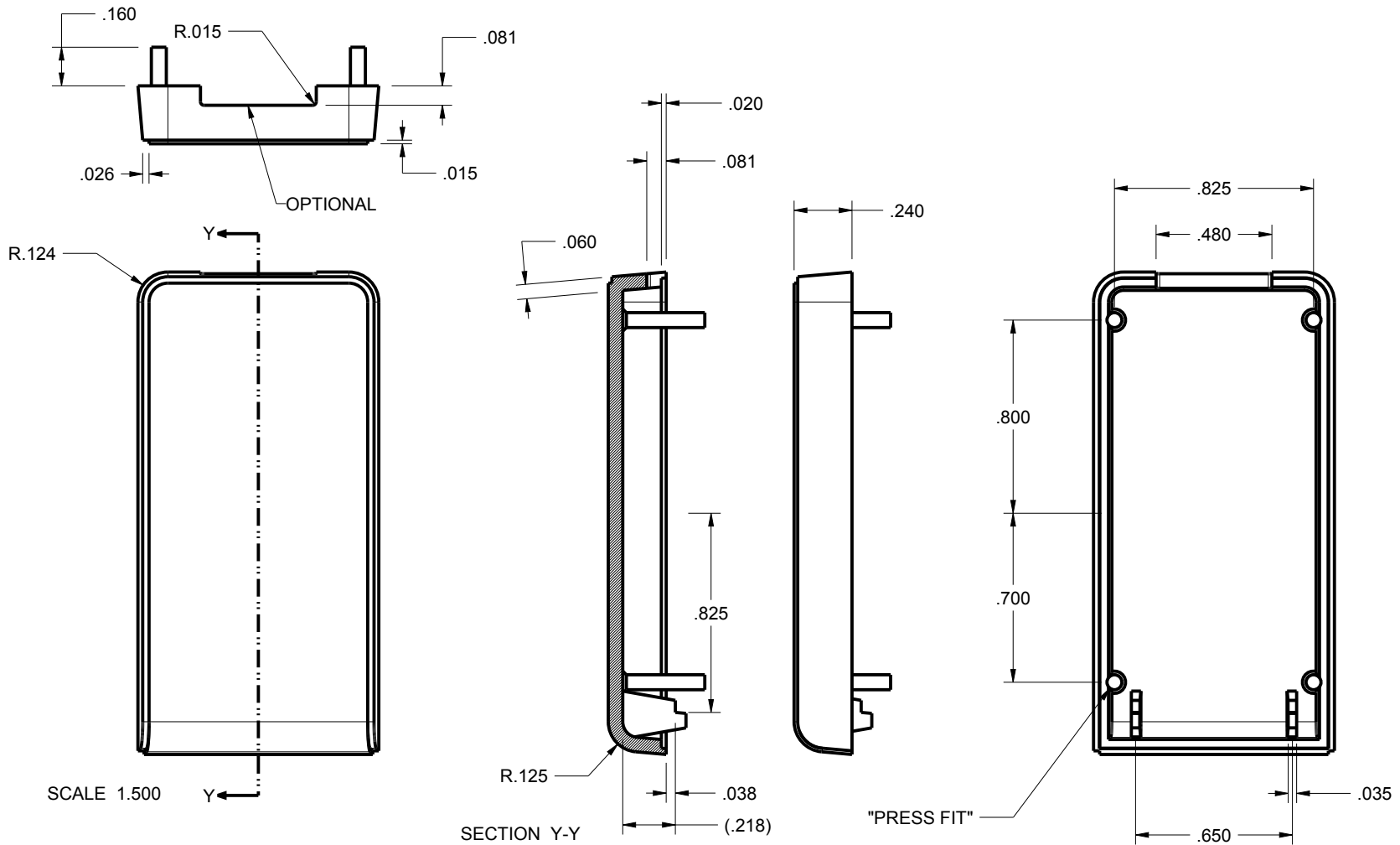
**NEW AGE ENCLOSURES**  
2240 South Thornburg Street Santa Maria, CA. 93455  
ph. (805) 595-1310 fax (805) 595-1024  
www.newageenclosures.com

STANDARD - USB DEVICE  
PXX-201005X-XXX

SIZE A DRAWING NAME 201005\_R7\_1

SHEET 2 OF 6 REV.DOC 7.1

# 201005U COVER



SCALE 1.500

SECTION Y-Y

"PRESS FIT"

TOLERANCES: UNLESS OTHERWISE SPECIFIED  
DIMENSIONS ARE IN U.S. INCHES.  
X.XX = .015 X.XXXX = .001  
X.XXX = .010 X.X° = 1°

**NEW AGE ENCLOSURES**  
2240 South Thornburg Street Santa Maria, CA. 93455  
ph. (805) 595-1310 fax (805) 595-1024  
www.newageenclosures.com

Customer's Part No: 201005X

|          |          |      |
|----------|----------|------|
| APPROVAL | BY       | DATE |
| CHECK    |          |      |
| ENG.     |          |      |
| SCALE    | AS NOTED |      |

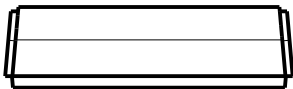
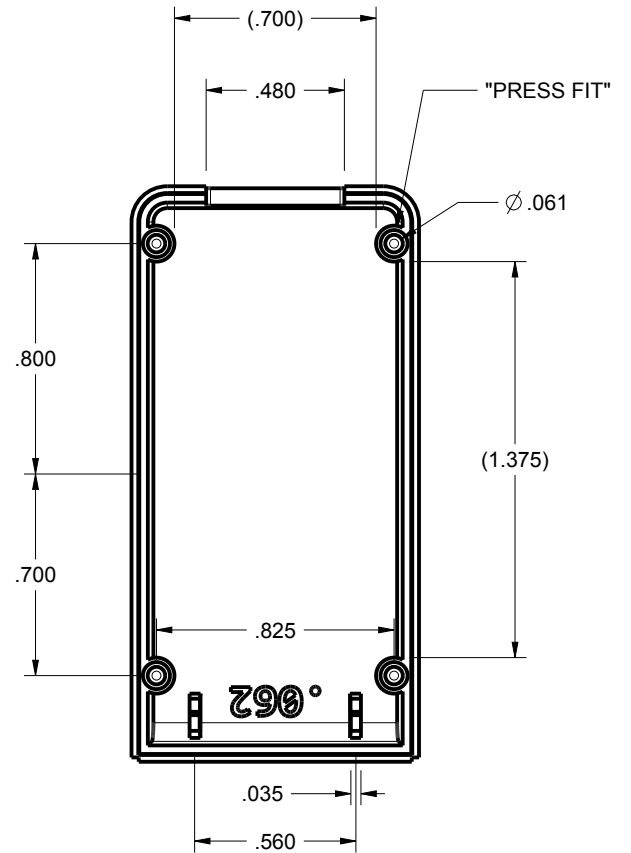
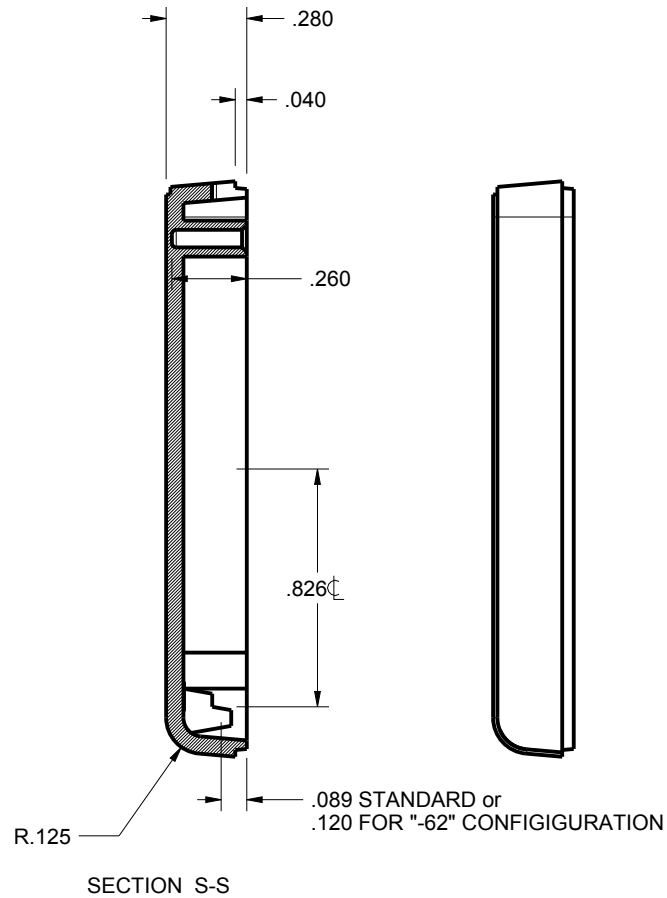
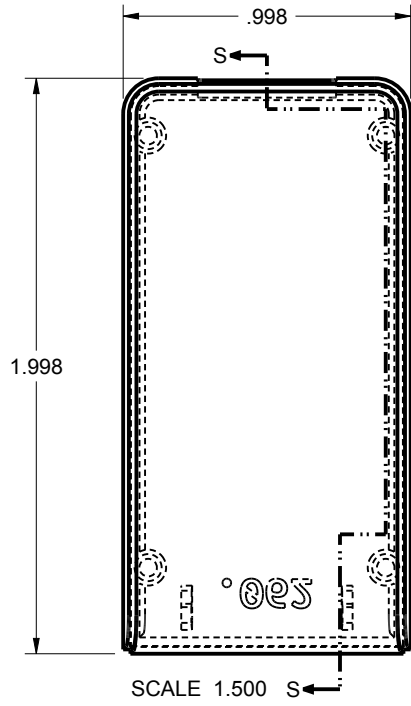
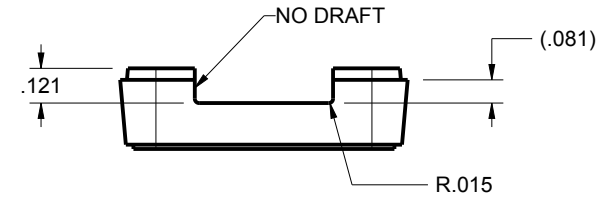
**STANDARD - USB DEVICE**  
**PXX-201005X-XXX**

DRAWN BY  
M BOYER 2007-May-21

SIZE A DRAWING NAME  
201005\_R7\_1

SHEET 3 OF 6 REV.DOC 7.1

20100562U BASE



TOLERANCES: UNLESS OTHERWISE SPECIFIED  
 DIMENSIONS ARE IN U.S. INCHES.  
 X.XX = .015 X.XXXX = .001  
 X.XXX = .010 X.X° = 1°

NEW AGE ENCLOSURES  
 Customer's Part No: 201005X

APPROVAL BY DATE

CHECK

ENG.

SCALE AS NOTED

DRAWN BY M BOYER 2007-May-21

**NEW AGE ENCLOSURES**

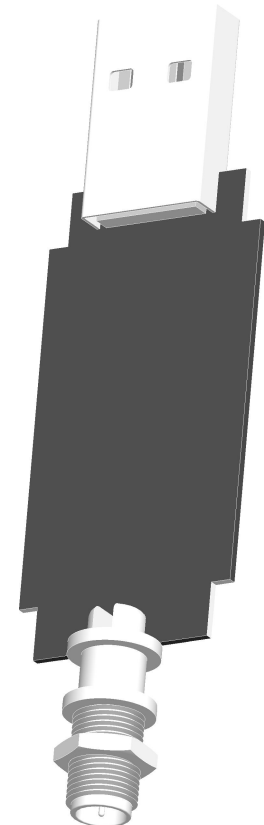
2240 South Thornburg Street Santa Maria, CA. 93455  
 ph. (805) 595-1310 fax (805) 595-1024  
 www.newageenclosures.com

STANDARD - USB DEVICE  
 PXX-201005X-XXX

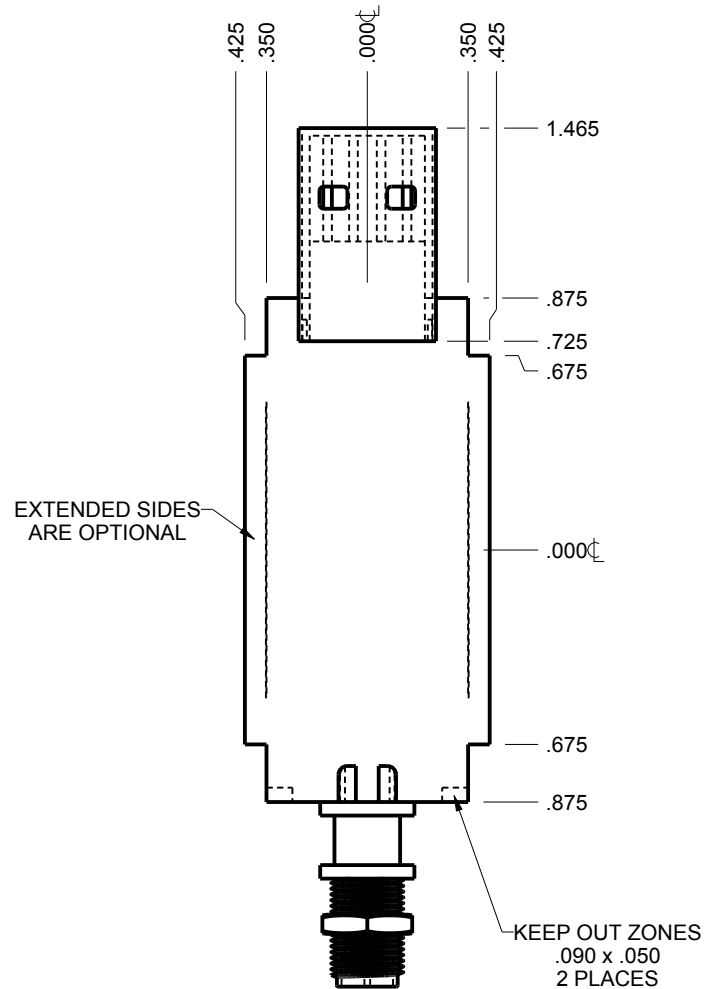
SIZE A DRAWING NAME 201005\_R7\_1 SHEET 4 OF 6 REV.DOC 7.1

# 201005 PCB - CUSTOMER SUPPLIED

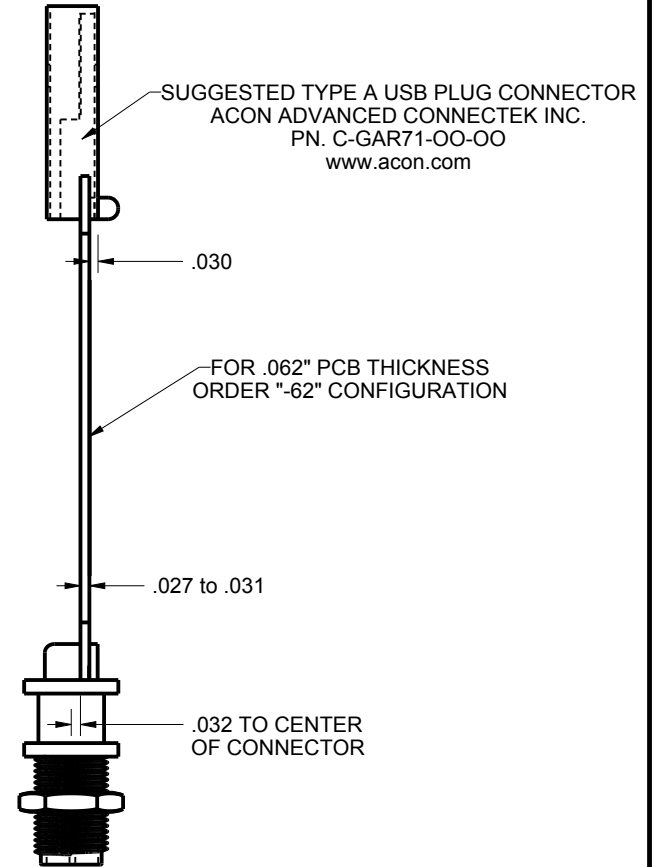
PCB SIZES ARE RECOMMENDATIONS ONLY. FINAL SIZES AND VERIFICATION OF IT'S FIT ARE THE SOLE RESPONSIBILITY OF THE OEM.



SCALE 1.500



SCALE 1.500



\*\* = RECOMMENDED BOARD THICKNESS IS .031" or .062" THICK, OPTIONS ARE AVAILABLE TO ALLOW OTHER THICKNESSES. ASK YOUR SALES REP FOR A QUOTE.

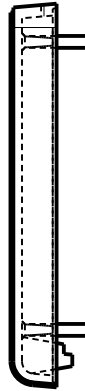
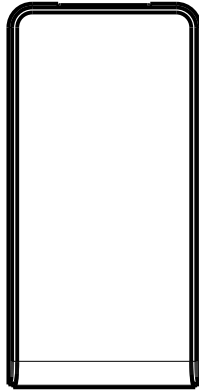
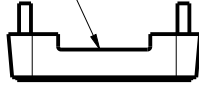
|  |             |   |              |
|--|-------------|---|--------------|
| TOLERANCES: UNLESS OTHERWISE SPECIFIED DIMENSIONS ARE IN U.S. INCHES.<br>X.XX = .015 X.XXXX = .001<br>X.XXX = .010 X.X° = 1° |             | <b>NEW AGE ENCLOSURES</b>   |              |
| NEW AGE ENCLOSURES   |             | 2240 South Thornburg Street Santa Maria, CA. 93455<br>ph. (805) 595-1310 fax (805) 595-1024<br>www.newageenclosures.com |              |
| Customer's Part No: 201005X  |             |   |              |
| APPROVAL   | BY          | DATE  |              |
| CHECK  |             |   |              |
| ENG.   |             |   |              |
| SCALE  | AS NOTED    |   |              |
| DRAWN BY   | 2007-May-21 | SIZE  | DRAWING NAME |
| M BOYER  |             | A   | 201005_R7_1  |
|  |             | SHEET   | REV.DOC      |
|  |             | 5 OF 6  | 7.1          |

**STANDARD - USB DEVICE**  
**PXX-201005X-XXX**

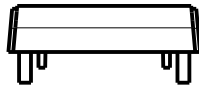
## 2nd OPERATION DETAILS

New Age Enclosures DELIVERS YOUR ENCLOSURE MARKET-READY WITH IN-HOUSE  
CNC MACHINING, PAD PRINTING, ASSEMBLY, AND FULFILLMENT.  
ALL SURFACES AND AREAS ARE AVAILABLE FOR CNC ALTERATION BY New Age Enclosures  
CALL (805) 595-1310 FOR PRICING AND SCHEDULE.  
THE INSIDE RADIUS OF ANY MACHINED FEATURES SHOULD BE NO SMALLER THAN .031"

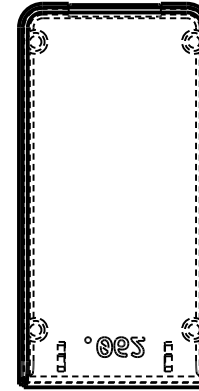
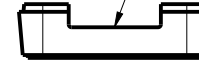
MOLDED USB  
OPENING



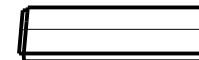
201005U COVER  
SCALE 1.000



MOLDED USB  
OPENING



201005U BASE  
SCALE 1.000



### PXX-201005U-XXX COVER - ABS, BLACK

| STEP NO | DESCRIPTION | CUTTER        | FIXTURE | ORIENTATION | PROGRAM |
|---------|-------------|---------------|---------|-------------|---------|
| 1-C-C1  | -           | T2 = .062" EM | 268     | -           | o1000   |
| 2-C-C2  | -           | T2 = .062" EM | 268     | -           | o1001   |

### PXX-201005U-XXX BASE - ABS, BLACK

| STEP NO | DESCRIPTION | CUTTER        | FIXTURE | ORIENTATION | PROGRAM |
|---------|-------------|---------------|---------|-------------|---------|
| 3-B-C1  | -           | T2 = .062" EM | 268     | -           | o1002   |
| 4-B-C2  | -           | T2 = .062" EM | 268     | -           | o1003   |

TOLERANCES: UNLESS OTHERWISE SPECIFIED  
DIMENSIONS ARE IN U.S. INCHES.  
X.XX = .015 X.XXXX = .001  
X.XXX = .010 X.X° = 1°

Customer's Part No: 201005X

APPROVAL BY DATE

CHECK

ENG.

SCALE AS NOTED

DRAWN BY

M BOYER 2007-May-21

## NEW AGE ENCLOSURES

2240 South Thornburg Street Santa Maria, CA. 93455  
ph. (805) 595-1310 fax (805) 595-1024  
[www.newageenclosures.com](http://www.newageenclosures.com)

### STANDARD - USB DEVICE PXX-201005X-XXX

|      |              |        |         |
|------|--------------|--------|---------|
| SIZE | DRAWING NAME | SHEET  | REV.DOC |
| A    | 201005_R7_1  | 6 OF 6 | 7.1     |