

Data sheet

1126.6 RK 240 GR



Feed-through terminal, Screw connection, Mounting type: Mounting rail TS 35/7.5 and TS 32, Rated cross-section: 240 mm², Width: 36 mm, Colour: Grey

RAL: 7030

Business data

Article number	1126.6
Article name	RK 240 GR
GTIN (EAN)	4044211127442
Packaging unit	5
Quantity unit	PC
Weight per piece (not including packaging)	352.4 g
Weight per piece (including packaging)	373.6 g
Unit of weight	G
Customs number	85369010
Country of origin	CZ
Prio-Article	1126.2
Product description	Feed-through terminal

Data sheet

1126.6 RK 240 GR

Technical data

Dimensions

Length	93 mm
Width	36 mm
Height TS 35/7.5	126.3 mm
Height TS 32	132 mm

Ratings

Rated voltage	1000 V
Rated current	415 A
Rated cross-section	240 mm ²
Rated impulse voltage	8 kV
Overvoltage category	III
Contamination degree	3
Maximum power dissipation for nominal condition	12.16 W

Technical data

Connection data

Connection principle	Screw connection
Connection position	Lateral
Connections	2
Number of terminals per level	2
Number of levels	1
Wire cross-section single-core (rigid) / stranded, min.	70 mm ²
Wire cross-section single core (rigid)/stranded, max.	240 mm ²
Wire cross-section stranded, min.	70 mm ²
Wire cross-section stranded, max.	240 mm ²
Wire cross-section stranded with wire-end ferrules,min.	70 mm ²
Wire cross-section stranded with wire-end ferrules,max.	185 mm ²
Wire cross-section AWG, min.	2/0
Wire cross-section AWG, max.	500 Kcmil
Stripping length	38 mm
Screw head	Inner hex (Allen)
Screw threading	M 10
Tightening torque, min.	14 Nm
Tightening torque, max.	20 Nm
Wire cross-section single-core (rigid) / stranded, AWGmax.	500 Kcmil
Wire cross-section single-core (rigid) / stranded, AWGmin.	2/0
Wire cross-section stranded, AWG max.	500 Kcmil
Wire cross-section stranded, AWG min.	2/0
Wire cross-section stranded with wire-end ferrules, AWG min.	2/0

Materials

Insulation housing	Polyamide 6.6
Flammability class UL 94	V-2
Working temperature, min.	-40 °C
Working temperature, max.	105 °C

Further technical data

Mounting type	Mounting rail TS 35/7.5 and TS 32
Gauge plug acc. to EN 60 947-1	B16
Banded wire up to	20 x 12 mm

Technical data

Environmental Product Compliance

REACH Conform	yes
REACH Reference date	2022-06-10
REACH Candidate Substance Note	No
RoHS Conform	yes

Approvals

Standards and regulations

EAC approval	TR ZU 004/2011
--------------	----------------

EAC approval granted	yes
----------------------	-----

CSA approval

CSA approval	C22.2 No 158
--------------	--------------

CSA approval granted	yes
----------------------	-----

CSA Usegroup C: rated voltage	600 V
-------------------------------	-------

CSA Usegroup C: rated current	370 A
-------------------------------	-------

CSA wire cross-section AWG, min.	2/0
----------------------------------	-----

CSA wire cross-section AWG, max.	500 Kcmil
----------------------------------	-----------

CSA stripping length	38 mm
----------------------	-------

CSA File Number	042110_0_000
-----------------	--------------

CSAus approval

CSAus approval	UL 1059
----------------	---------

CSAus approval granted	yes
------------------------	-----

CSAus Usegroup C: rated voltage	600 V
---------------------------------	-------

CSAus Usegroup C: rated current	370 A
---------------------------------	-------

CSAus wire cross-section AWG, min.	2/0
------------------------------------	-----

CSAus wire cross-section AWG, max.	500 Kcmil
------------------------------------	-----------

CSAus stripping length	38 mm
------------------------	-------

CSAus File Number	042110_0_000
-------------------	--------------

KEMA KEUR approval

KEMA KEUR approval	EN 60947-7-1:2009
--------------------	-------------------

KEMA KEUR approval granted	yes
----------------------------	-----

KEMA rated voltage	1000 V
--------------------	--------

KEMA rated current	415 A
--------------------	-------

KEMA rated impulse voltage	12 kV
----------------------------	-------

KEMA wire cross-section single core (rigid), min.	50 mm ²
---	--------------------

KEMA wire cross-section single-core (rigid), max.	240 mm ²
---	---------------------

KEMA wire cross-section stranded, min.	70 mm ²
--	--------------------

KEMA wire cross-section stranded, max.	240 mm ²
--	---------------------

KEMA stripping length	38 mm
-----------------------	-------

KEMA torque, min.	14 Nm
-------------------	-------

KEMA torque, max.	20 Nm
-------------------	-------

Approvals

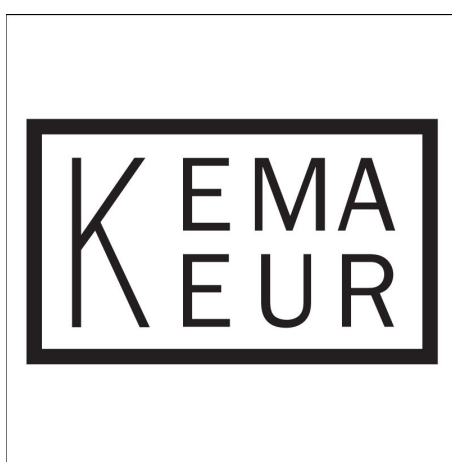
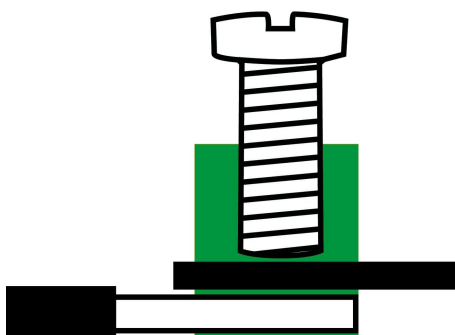
UL Recognized

UL approval	UL 1059
UL Usegroup B: rated voltage	600 V
UL Usegroup B: rated current	370 A
UL Usegroup C: rated voltage	600 V
UL Usegroup C: rated current	370 A
UL wire cross-section single-core (rigid) AWG, min.	2/0
UL wire cross-section single-core (rigid) AWG, max.	500 Kcmil
UL wire cross-section stranded AWG, min.	2/0
UL wire cross-section stranded AWG, max.	500 Kcmil
UL torque	142 Lb In
UL wire material	Cu
UL factory wiring	1
UL File Number	E95701
UL Recognized	1

German Lloyd approval

DNV GL Certificate number	TAE000014T
DNV GL Location Classes	Temperature: B, Humidity: B, Vibration: A
DNV GL approval granted	1
DNV GL rated cross-section	240 mm ²
DNV GL rated current	370 A
DNV GL rated voltage	600 V
DNV GL test standard	IEC 60947-7-1:2002

Media



Accessories

Cover



Cover, Length: 60 mm, Width: 25.5 mm, Colour: Yellow

Article number	Article name	GTIN (EAN)	Packaging unit
<u>2808.0</u>	AD 1/240/B YE	4044211055370	20 ST

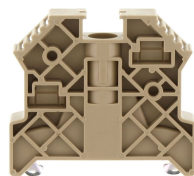
Inlay profile



Inlay plate, Colour: natural

Article number	Article name	GTIN (EAN)	Packaging unit
<u>2360.0</u>	EP 240	4044211051495	10 ST

End stop



End stop, Mounting type: Mounting rail TS 35/7.5, Width: 9.5 mm, Colour: Beige

Article number	Article name	GTIN (EAN)	Packaging unit
<u>2828.0</u>	ES 35/K/ST BG	4044211055547	50

Allen key socket wrench



Inner hex key with bare blade

Article number	Article name	GTIN (EAN)	Packaging unit
<u>2773.0</u>	ISKS 8	4044211055035	1 ST

Measurement pick-off terminal

Data sheet

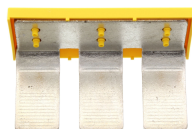
1126.6 RK 240 GR



Measurement pick-off terminal, Screw connection, Mounting type: On base, Rated cross-section: 10 mm², Width: 10 mm, Colour: Beige

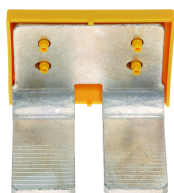
Article number	Article name	GTIN (EAN)	Packaging unit
<u>1125.2</u>	MAG 150/240 BG	4044211080921	10 ST

Insulated cross-connector



External insulated cross-connector, No. of poles: 3, Mounting type: Plug in, Width: 103.12 mm, Rated current: 380 A; Colour: Yellow

Article number	Article name	GTIN (EAN)	Packaging unit
<u>2770.2</u>	AQI 3/240 YE	4044211055004	5



External insulated cross-connector, No. of poles: 2, Mounting type: Plug in, Width: 66.28 mm, Rated current: 380 A; Colour: Yellow

Article number	Article name	GTIN (EAN)	Packaging unit
<u>2769.2</u>	AQI 2/240 YE	4044211054991	5

Quick marking



Terminal marker / Pocket Maxicard, Length: 5 mm, Width: 6 mm, Colour: White

Article number	Article name	GTIN (EAN)	Packaging unit
<u>4702.7</u>	PMC SB 6/50 WH	4044211089986	500 ST

##INVERSE##CONTA-CONNECT



Measurement pick-off terminal, Screw connection, Mounting type: On base, Rated cross-section: 10 mm², Width: 10 mm, Colour: Beige

Article number	Article name	GTIN (EAN)	Packaging unit
<u>1125.2</u>	MAG 150/240 BG	4044211080921	10 ST