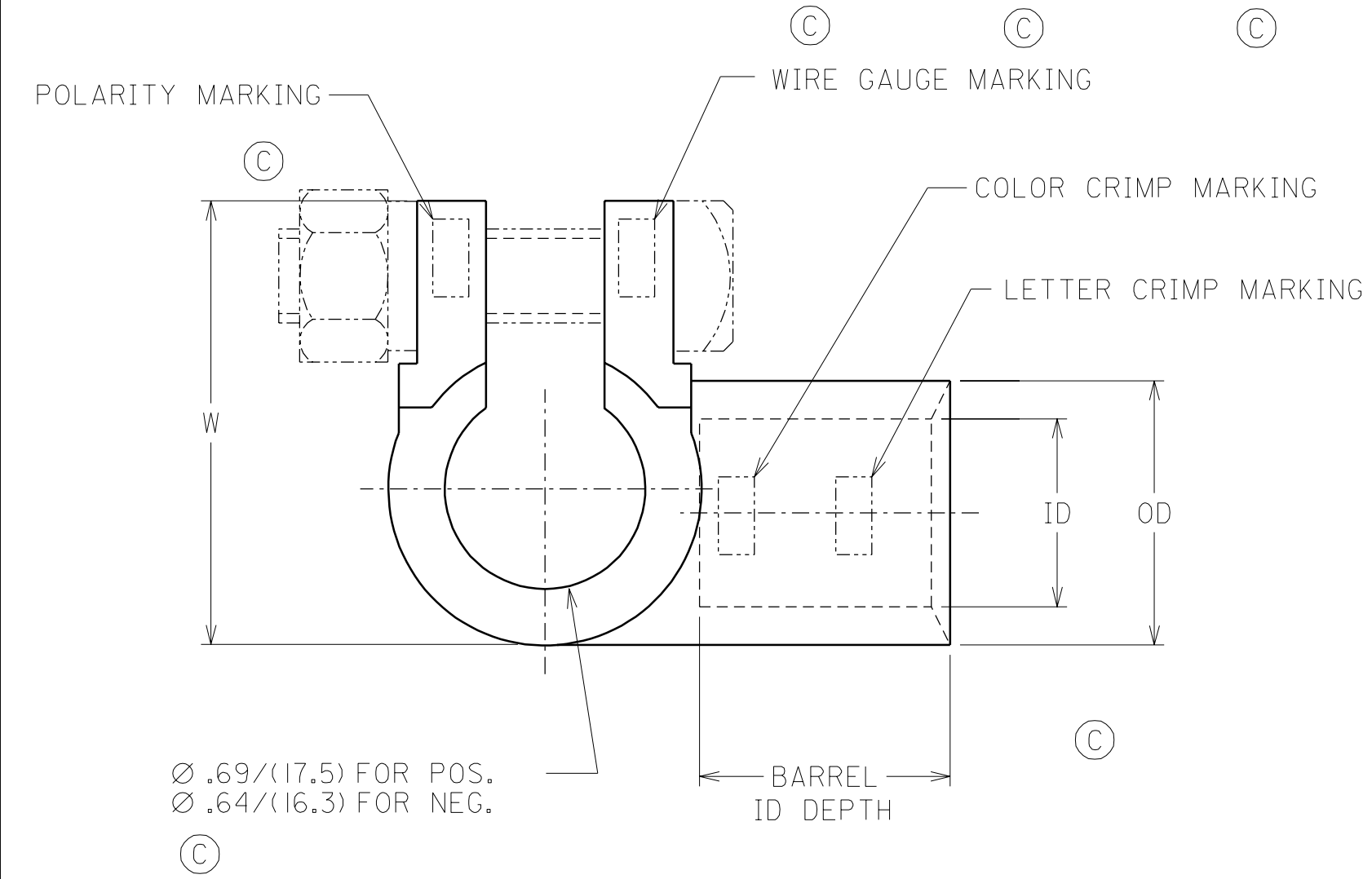
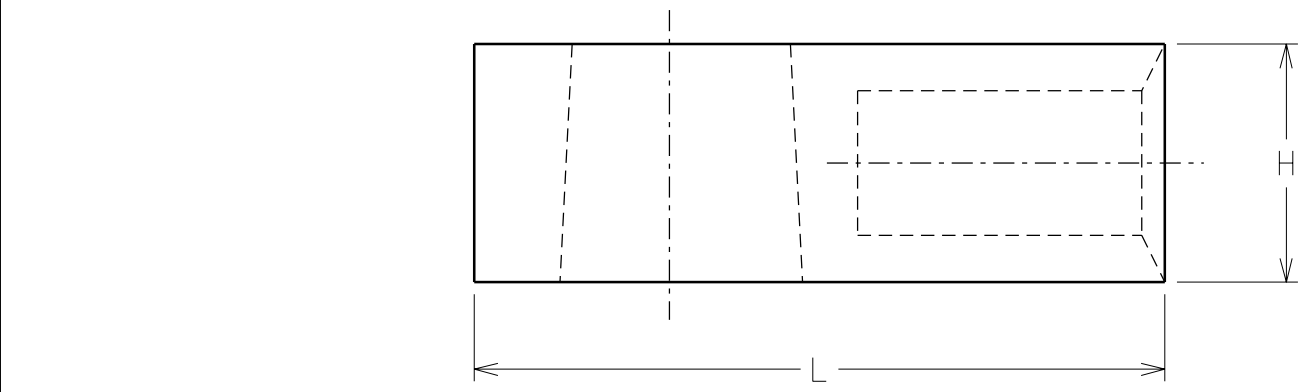


MATERIAL NUMBER NEGATIVE	MATERIAL NUMBER POSITIVE	WIRE GAUGE MARKING	COLOR CRIMP MARKING	BARREL ID	BARREL OD	BARREL ID DEPTH	L +.060, -.010 (+1.52, -0.25)	H	W
192180035	192180036	2	GREEN	.34/(8.6)	.55/(14.0)	1.16/(29.5)	2.07/(52.6)	.65/(16.5)	1.40/(35.6)
192180033	192180034	1	PINK	.39/(9.9)	.55/(14.0)	1.16/(29.5)	2.07/(52.6)	.65/(16.5)	1.40/(35.6)
192180037	192180038	1/0	BLACK	.47/(11.9)	.65/(16.5)	1.16/(29.5)	2.07/(52.6)	.65/(16.5)	1.50/(38.1)
192180039	192180040	2/0	ORANGE	.50/(12.7)	.65/(16.5)	1.16/(29.5)	2.07/(52.6)	.65/(16.5)	1.50/(38.1)
192180041	192180042	3/0	PURPLE	.53/(13.5)	.65/(16.5)	1.16/(29.6)	2.07/(52.6)	.65/(16.5)	1.50/(38.1)
192180043	192180044	4/0	YELLOW	.60/(15.2)	.83/(21.1)	1.07/(27.2)	2.07/(52.6)	.71/(18.0)	1.59/(40.4)
192180045	192180046	6/0	YELLOW	.67/(17.0)	.83/(21.1)	1.07/(27.2)	2.07/(52.6)	.71/(18.0)	1.59/(40.4)



- NOTES:
 1. MATERIAL: DIE CAST COPPER.
 2. FINISH: TIN PLATED.
 3. INCLUDES 5/16 BOLT & SHOULDER NUT.

SALES DRAWING



EC NO. ETC2002-0324 DRWN: BRE 02/05/20 CHK: HEB 02/05/20 APPR: RWD 02/05/20	QUALITY SYMBOLS	GENERAL TOLERANCES: (UNLESS SPECIFIED)		SCALE 2:3	DESIGN UNITS <input type="checkbox"/> mm <input checked="" type="checkbox"/> INCH	THIRD ANGLE PROJECTION <input checked="" type="checkbox"/> mm <input type="checkbox"/> INCH	SHT	REV
	MAJOR $\nabla=0$	mm	INCH	DRAWN BY & DATE	TITLE: DIE CAST COPPER BATTERY TERMINAL RIGHT ELBOW			
	CRITICAL $\nabla=0$	4 PLACES ±0.	±.	CHECKED BY & DATE	MOLEX INCORPORATED			
	DESCRIPTION	3 PLACES ±0.	±.015	APPROVED BY & DATE	MATERIAL NO. SEE CHART DRAWING NO. SD-19218-004 SHEET NO. 1 OF 1			
REV	1 PLACE ±0.76	±.	ANGULAR: ±1/2°	THIS DRAWING CONTAINS INFORMATION THAT IS PROPRIETARY TO MOLEX INCORPORATED AND SHOULD NOT BE USED WITHOUT WRITTEN PERMISSION.				SIZE B