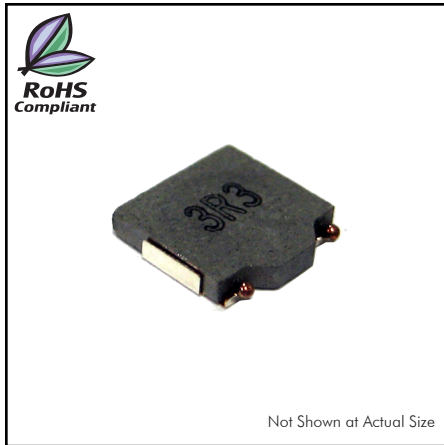


## CTSPMA6015F Series

From .47 $\mu$ H to 10 $\mu$ H



### SPECIFICATIONS

Parts are available in  $\pm 20\%$  inductance tolerance only

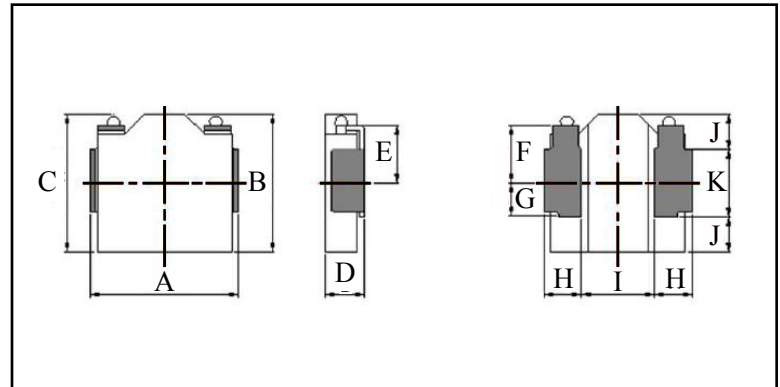
Part Number	Inductance ( $\mu$ H)	L Test Condition	DCR Max. (m $\Omega$ )	Isat Max. (A)	Irms Max. (A)
CTSPMA6015F-R47M	0.47	100KHz, 1V	8.8	18.0	11.2
CTSPMA6015F-R68M	0.68	100KHz, 1V	11.2	16.0	9.5
CTSPMA6015F-1R0M	1.00	100KHz, 1V	13.5	11.5	8.8
CTSPMA6015F-1R5M	1.50	100KHz, 1V	23.8	9.7	6.3
CTSPMA6015F-2R2M	2.20	100KHz, 1V	33.5	8.4	5.4
CTSPMA6015F-3R3M	3.30	100KHz, 1V	43.3	7.2	4.7
CTSPMA6015F-4R7M	4.70	100KHz, 1V	62.0	5.2	3.8
CTSPMA6015F-6R8M	6.80	100KHz, 1V	87.0	4.6	3.2
CTSPMA6015F-100M	10	100KHz, 1V	120.0	3.3	2.7

### PHYSICAL DIMENSIONS

Size	A	B	C	D	E	F
			Max.	Max.		
mm	7.1 $\pm$ 0.2	6.7 $\pm$ 0.2	7.1	1.5	2.7	2.7
inches	0.28 $\pm$ 0.008	0.26 $\pm$ 0.008	0.28	0.059	0.106	0.106
Size	G	H	I	J	K	
mm	1.5	1.65 $\pm$ 0.1	3.8	1.85 $\pm$ 0.1	3.0	
inches	0.059	0.065 $\pm$ 0.004	0.150	0.073 $\pm$ 0.004	0.118	

### CHARACTERISTICS

**Description:** SMD (shielded) Power Inductors  
**Applications:** Smart phones, Notebook PC's, Tablets, HDD's, Servers, VRM's, Compact power supply modules, etc.  
**Saturation Rated Current (Isat):** The DC current when the when the inductance becomes 30% lower than its initial value. (Ta=25°C)  
**Temperature Rise Current (Irms):** The actual current when temperature of coil becomes  $\Delta T 40^\circ\text{C}$ . (Ta=25°C)  
**Operating Temperature Range:** -55°C to 155°C  
**Markings:** Inductance Code  
**Miscellaneous:** RoHS compliant  
**Samples available. See website for ordering information.**



### PAD LAYOUT

