

Fuse-disconnect terminal, Screw connection, Mounting type: Mounting rail TS 35/7.5 and TS 32, Rated cross-section: 4 mm², Width: 8 mm, Colour: Blue

RAL: Ähnlich 5005

Business data

| | |
|--|--------------------------|
| Article number | 2190.5 |
| Article name | STK 1 BU |
| GTIN (EAN) | 4044211050146 |
| Packaging unit | 100 |
| Quantity unit | PC |
| Weight per piece (not including packaging) | 12.8 g |
| Weight per piece (including packaging) | 13.83 g |
| Unit of weight | G |
| Customs number | 85369010 |
| Country of origin | CZ |
| Prio-Article | 2190.2 |
| Product description | Fuse-disconnect terminal |

Technical data

Dimensions

| | |
|------------------|---------|
| Length | 57.5 mm |
| Width | 8 mm |
| Height TS 35/7.5 | 41 mm |
| Height TS 32 | 45.5 mm |

Ratings

| | |
|---|-------------------|
| Rated voltage (determined by the illuminated display and fuse being used) | 400 V |
| Rated current (as fuse-disconnect terminal) | 6,3 A |
| Rated cross-section | 4 mm ² |
| Rated impulse voltage | 6 kV |
| Overvoltage category | III |
| Contamination degree | 3 |

Connection data

| | |
|--|----------------------|
| Connection principle | Screw connection |
| Connection position | Lateral |
| Connections | 2 / extraction lever |
| Number of terminals per level | 2 |
| Number of levels | 1 |
| Wire cross-section single-core (rigid) / stranded, min. | 0.2 mm ² |
| Wire cross-section single core (rigid)/stranded, max. | 4 mm ² |
| Wire cross-section stranded, min. | 0.2 mm ² |
| Wire cross-section stranded, max. | 4 mm ² |
| Wire cross-section stranded with wire-end ferrules, min. | 0.2 mm ² |
| Wire cross-section stranded with wire-end ferrules, max. | 4 mm ² |
| Wire cross-section AWG, min. | 22 |
| Wire cross-section AWG, max. | 12 |
| Stripping length | 9 mm |
| Screw head | Slotted |
| Screw threading | M 3 |
| Tightening torque, min. | 0.5 Nm |
| Tightening torque, max. | 1 Nm |

Technical data

Materials

| | |
|---------------------------|---------------|
| Insulation housing | Polyamide 6.6 |
| Flammability class UL 94 | V-2 |
| Working temperature, min. | -40 °C |
| Working temperature, max. | 105 °C |

Further technical data

| | |
|--|-----------------------------------|
| Mounting type | Mounting rail TS 35/7.5 and TS 32 |
| Fuse size | 5 x 20 / 5 x 25 mm |
| Gauge plug acc. to EN 60 947-1 | A4 |
| End plate required | ✓ |
| Voltage fuse | 250 V |
| Power loss in singular arrangement - overload and short-circuit protection, max. | 2,5 / 6,3 W / A |
| Power loss in compound arrangement - overload and short-circuit protection, max. | 2,5 / 6,3 W / A |
| Power loss in singular arrangement - only short-circuit protection, max. | 4 / 6,3 W / A |
| Power loss in compound arrangement - only short-circuit protection, max. | 4 / 6,3 W / A |
| Version of fuse holder | Swivelling |
| Version of fuse cartridge | G fuse 5 x 20 / 5 x 25 |

Environmental Product Compliance

| | |
|--------------------------------|------------|
| REACH Conform | yes |
| REACH Reference date | 2022-06-10 |
| REACH Candidate Substance Note | No |
| RoHS Conform | yes |

Approvals

KEMA KEUR approval

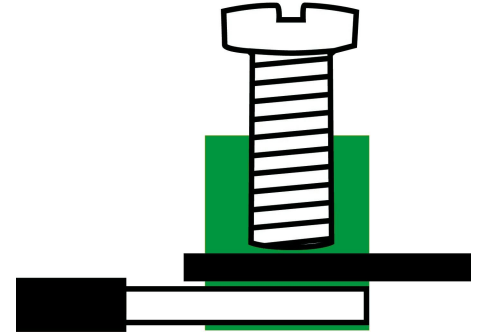
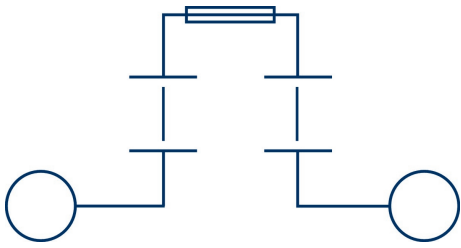
| | |
|---|--------------------------------------|
| KEMA KEUR approval | EN 60947-7-1:2009, EN 60947-7-3:2009 |
| KEMA KEUR approval granted | yes |
| KEMA rated voltage | 400 V |
| KEMA voltage fuse, max. | 250 V |
| KEMA rated current | 6,3 A |
| KEMA rated impulse voltage | 6 kV |
| KEMA wire cross-section single core (rigid), min. | 0.2 mm ² |
| KEMA wire cross-section single-core (rigid), max. | 4 mm ² |
| KEMA wire cross-section stranded, min. | 0.2 mm ² |
| KEMA wire cross-section stranded, max. | 4 mm ² |
| KEMA torque, min. | 0.5 Nm |
| KEMA torque, max. | 1 Nm |
| KEMA fuse size | 5 x 20 / 5 x 25 mm |
| KEMA power loss in singular arrangement - overload and short-circuit protection, max. | 2,5 / 6,3 W / A |
| KEMA power loss in compound arrangement - overload and short-circuit protection, max. | 2,5 / 6,3 W / A |
| KEMA power loss in singular arrangement - only short-circuit protection, max. | 4 / 6,3 W / A |
| KEMA power loss in compound arrangement - only short-circuit protection, max. | 4 / 6,3 W / A |

Approvals

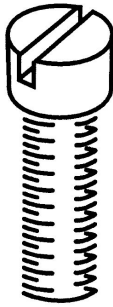
UL Recognized

| | |
|---|---------|
| UL approval | UL 1059 |
| UL Usegroup B: rated voltage | 600 V |
| UL Usegroup B: rated current | 16 A |
| UL Usegroup C: rated voltage | 600 V |
| UL Usegroup C: rated current | 16 A |
| UL wire cross-section single-core (rigid) AWG, min. | 22 |
| UL wire cross-section single-core (rigid) AWG, max. | 12 |
| UL wire cross-section stranded AWG, min. | 22 |
| UL wire cross-section stranded AWG, max. | 12 |
| UL torque | 7 Lb In |
| UL wire material | Cu |
| UL factory wiring | 1 |
| UL field wiring | 1 |
| UL Recognized | 1 |

Media



M3



Accessories

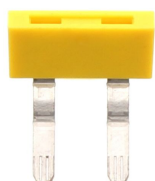
End plate



End plate, Width: 1.5 mm, Colour: Beige

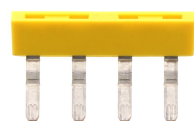
| Article number | Article name | GTIN (EAN) | Packaging unit |
|----------------|--------------|---------------|----------------|
| <u>2046.2</u> | AP SI-1 BG | 4044211048518 | 50 |

Insulated external cross-connector



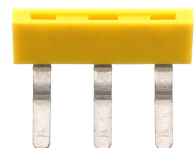
External insulated cross-connector, No. of poles: 2, Mounting type: Plug in, Width: 16.1 mm, Rated current: 27 A; Colour: Yellow

| Article number | Article name | GTIN (EAN) | Packaging unit |
|----------------|---------------|---------------|----------------|
| <u>2067.0</u> | AQI 2/8/11 YE | 4044211048730 | 50 ST |



External insulated cross-connector, No. of poles: 4, Mounting type: Plug in, Width: 32.3 mm, Rated current: 27 A; Colour: Yellow

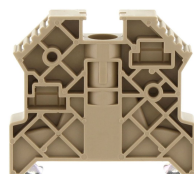
| Article number | Article name | GTIN (EAN) | Packaging unit |
|----------------|---------------|---------------|----------------|
| <u>2069.0</u> | AQI 4/8/11 YE | 4044211048754 | 50 ST |



External insulated cross-connector, No. of poles: 3, Mounting type: Plug in, Width: 24.2 mm, Rated current: 27 A; Colour: Yellow

| Article number | Article name | GTIN (EAN) | Packaging unit |
|----------------|---------------|---------------|----------------|
| <u>2068.0</u> | AQI 3/8/11 YE | 4044211048747 | 50 ST |

End stop



End stop, Mounting type: Mounting rail TS 35/7.5, Width: 9.5 mm, Colour: Beige

| Article number | Article name | GTIN (EAN) | Packaging unit |
|----------------|---------------|---------------|----------------|
| <u>2828.0</u> | ES 35/K/ST BG | 4044211055547 | 50 |

Solid link



Solid link, Colour: natural

| Article number | Article name | GTIN (EAN) | Packaging unit |
|----------------|--------------|---------------|----------------|
| <u>2470.0</u> | KH 5 | 4044211052607 | 100 ST |

Quick marking



Terminal marker / Pocket Maxicard, Length: 5 mm, Width: 8 mm, Colour: White

| Article number | Article name | GTIN (EAN) | Packaging unit |
|----------------|----------------|---------------|----------------|
| <u>9323.7</u> | PMC SB 8/40 WH | 4044211129231 | 400 ST |

Screwdriver



Screwdriver with bare blade, Colour: Black-grey

| Article number | Article name | GTIN (EAN) | Packaging unit |
|----------------|--------------|---------------|----------------|
| <u>1086.0</u> | SDB 0,6x3,5 | 4044211014797 | 1 ST |

Connecting piece

Connecting sleeve, Colour: Orange



| Article number | Article name | GTIN (EAN) | Packaging unit |
|----------------|--------------|---------------|----------------|
| <u>2873.3</u> | VBS 2/10 OG | 4044211055981 | 20 ST |

Connecting sleeve, Colour: Orange



| Article number | Article name | GTIN (EAN) | Packaging unit |
|----------------|--------------|---------------|----------------|
| <u>2874.3</u> | VBS 3/10 OG | 4044211055998 | 20 ST |