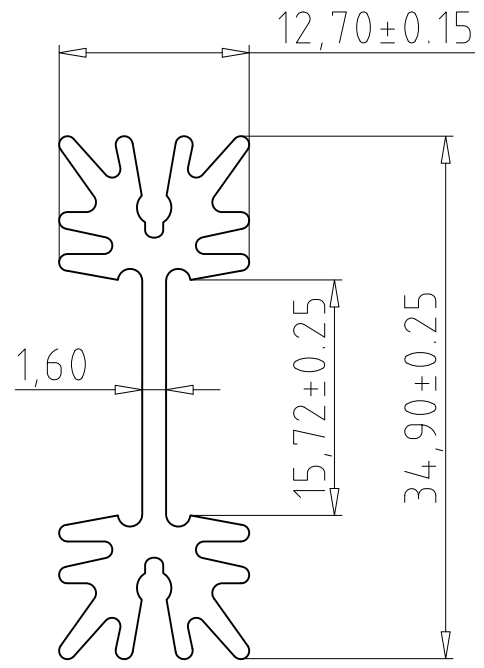
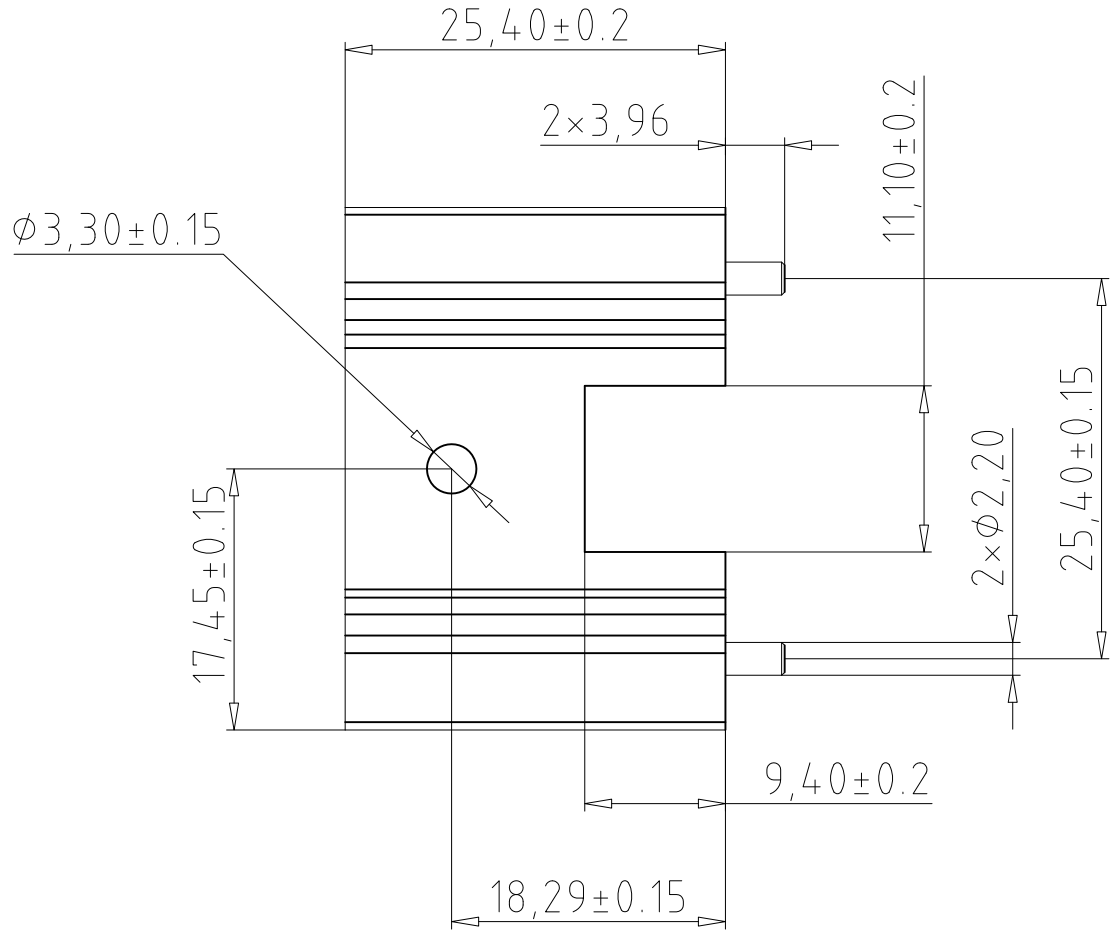
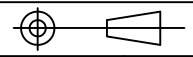


REV	DESCRIPTION	DATE	ORIGINATOR	APPROVED
A	--	--	--	--



NOTES:  
 1.MATERIA: AL6063-T5  
 2.FINISH:Black Anodize  
 3.BREAK AND DEBUR ALL SHARP EDGES  
 4.PART SHALL BE ROHS COMPLIANT

ALL DIMENSIONS ARE IN mm	
Unindicated TOL.	
.X	±0.35mm
.XX	±0.25mm
.XXX	±0.13mm
ANG.	±1.0°



FINISH Black Anodized				
DRAWN BY Kevin Zhong				
CHECKED BY	CUSTOMER PART NUMBER	DWG SIZE A4	CUS REV A	CS REV A
APPROVED BY	CS PART NUMBER CSBL-176-A-0	SHEET 1 of 1	SCALE 1:1	DATE 04/26/2022