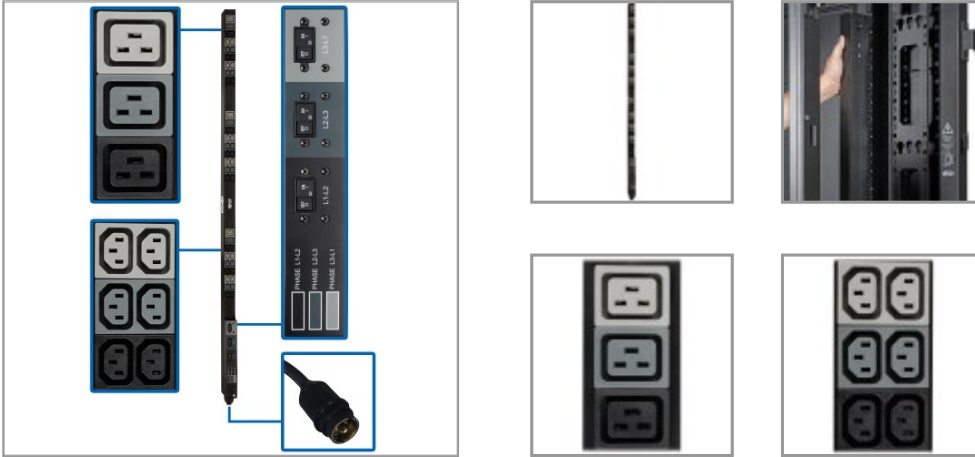


12.6kW 208V 3-Phase Basic PDU - 45 Outlets (36 C13, 9 C19), Hubbell 50A CS8365C Input, 6 ft. Cord, 70 in. 0U, TAA

MODEL NUMBER: PDU3V6H50



Delivers 208V 3-phase AC power to multiple loads from a utility outlet, generator or UPS system in a data center or network closet.

Features

3-Phase 208V PDU Distributes Network-Grade Power to Multiple Loads

This basic PDU is an ideal no-frills unit for networking, telecom, security, audio/video and sound reinforcement applications. Recommended for small to mid-sized data centers, computer rooms and network closets, the PDU3V6H50 features 36 C13 (208V) and six C19 (208V) outlets in three breakered single-phase output load banks for connecting equipment. A six-foot (1.8 meters) cord with Hubbell 50A CS8365C (3P+E) 3-phase input plug connects to your facility's AC power source, generator or protected UPS system to distribute power to connected loads.

Easy to Install Vertically in an EIA-Standard 19 in. Rack

The 70-inch 0U PDU's all-metal housing mounts vertically using the pre-installed toolless mounting buttons or the included brackets. Spare buttons are also included. Use the included PDUMVROTATEBRKT kit to install the PDU with outlets facing the rear for better airflow or equipment access. Cable retention brackets keep power cords organized and your rack free of clutter. The PDU's switchless design helps prevent an accidental shutdown, which could lead to costly downtime.

TAA-Compliant for GSA Schedule Purchases

The PDU3V6H50 is compliant with the Federal Trade Agreements Act (TAA), which makes it eligible for GSA (General Services Administration) Schedule and other federal procurement contracts.

Specifications

| OVERVIEW | |
|----------|--------------|
| UPC Code | 037332256010 |
| PDU Type | Basic |

Highlights

- Ideal no-frills PDU for telecom, security, audio/video and other network applications
- 36 C13 and 6 C19 single-phase outlets distribute AC power to connected equipment
- Switchless design helps prevent accidental shutdowns that can lead to costly downtime
- 6 ft. power cord with Hubbell 50A CS8365C 3-phase input connects to AC source
- Compliant with the Federal Trade Agreements Act (TAA) for GSA Schedule purchases

Package Includes

- PDU3V6H50 12.6kW 208V 3-Phase Basic PDU
- Plug retention brackets with installation hardware
- Rack-mounting hardware
- Owner's manual

| INPUT | |
|----------------------------------|----------------------------------------------------------------------------------------------------------------------------------------|
| PDU Input Voltage | 208 |
| Recommended Electrical Service | Three-phase 50A 208V service |
| Maximum Input Amps | 35 |
| Maximum Input Amps Details | Agency de-rated to 35A continuous |
| PDU Plug Type | HUBBELL CS8365C 50A |
| Input Phase | 3-Phase |
| Input Cord Length (ft.) | 6 |
| Input Cord Length (m) | 1.83 |
| OUTPUT | |
| Output Capacity Details | 12.6kVA (208V) total capacity; 20A max per breakered outlet bank; 16A max per C19 outlet; 12A max per C13 outlet |
| Frequency Compatibility | 50 / 60 Hz |
| Output Receptacles | (36) C13; (9) C19 |
| Output Nominal Voltage | 208V |
| Overload Protection | 3 20A circuit breakers, 1 per outlet bank |
| SURGE / NOISE SUPPRESSION | |
| Automatic Shut-Off | No |
| PHYSICAL | |
| Material of Construction | Metal |
| Form Factors Supported | Vertical rackmount installation supported with included mounting brackets; supports toolless mounting in button-mount compatible racks |
| PDU Form Factor | Vertical (0U) |
| Shipping Dimensions (hwd / in.) | 6.00 x 10.00 x 77.30 |
| Shipping Weight (kg) | 9.71 |
| Unit Dimensions (hwd / in.) | 70.000 x 2.200 x 2.650 |
| Unit Dimensions (hwd / cm) | 177.8 x 6.73 x 4.34 |
| Unit Weight (lbs.) | 14.5 |
| Unit Weight (kg) | 6.58 |
| ENVIRONMENTAL | |
| Operating Temperature Range | 0C ~ 40C (32F ~ 104F) |
| Storage Temperature Range | -30°C to +60°C (-22°F to +140°F) |
| Relative Humidity | 5-95% non-condensing |
| Operating Elevation (ft.) | 0-10,000 |

| | |
|--------------------------------------|--------------------------------------------------------------------------------|
| Operating Elevation (m) | 0-3000 |
| FEATURES & SPECIFICATIONS | |
| TVSS Grounding | Grounding lug |
| STANDARDS & COMPLIANCE | |
| Product Certifications | RETIE (Colombia); CAN/CSA-C22.2 No. 62368-1 (Canada); NOM (Mexico); UL 62368-1 |
| Product Compliance | RoHS; Trade Agreements Act (TAA) |
| WARRANTY & SUPPORT | |
| Product Warranty Period (Worldwide) | 2-year limited warranty |