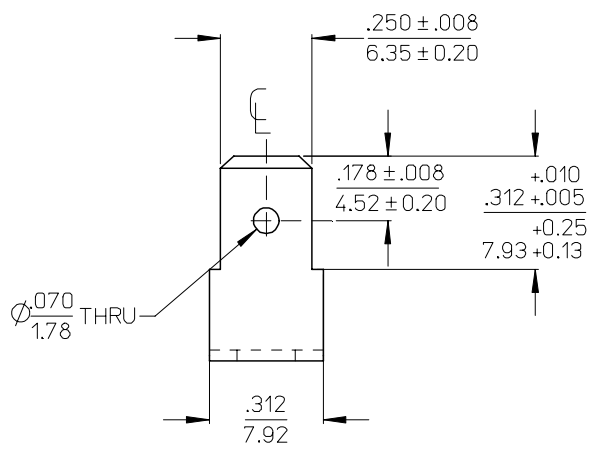
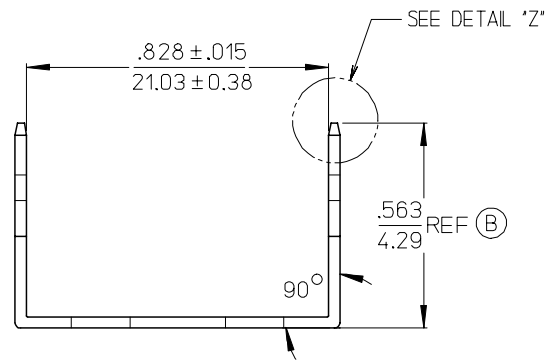
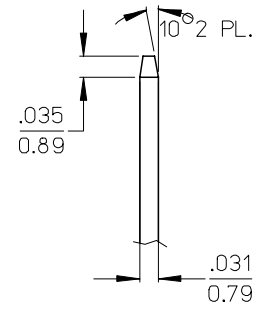
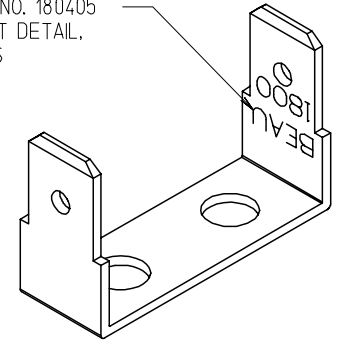


Ø.161 THRU  
4.092 PL.



REF. DWG. NO. 180405  
FOR IMPRINT DETAIL,  
BOTH SIDES



DETAIL "Z"  
SCALE 5:1

NOTES:  
1. MATERIAL: 70/30 BRASS, HALF HARD  
2. FINISHES: SEE TABLE

380020266	1804-0701-A500	380020264	TIN PLATED
380020264	1804-0701-A110	435870182	PLAIN
MATERIAL NO.	ENGINEERING NO.	MADE FROM	FINISH

CHANGED TO REF DIM  
EC NO: ETC2006-0257  
DRWN:NASAYDEH 2006/03/03  
CHKD: ILOMASTRO 2006/03/06  
APPR: RDEROSS 2006/03/07

QUALITY SYMBOLS  
▽=0  
▽=0

GENERAL TOLERANCES (UNLESS SPECIFIED)	
	mm INCH
4 PLACES	± --- ±.0015
3 PLACES	± 0.038 ±.005
2 PLACES	± 0.13 ±.01
1 PLACE	± 0.25 ± ---
ANGULAR ± 2 °	
DRAFT WHERE APPLICABLE MUST REMAIN WITHIN DIMENSIONS	

DIMENSION STYLE	
IN/MM	
DRAWN BY	DATE
HCH	69/05/12
CHECKED BY	DATE
APPROVED BY	DATE
RN	69/05/12
MATERIAL NO.	SEE CHART

SCALE	3:1	DESIGN UNITS	INCH	THIRD ANGLE PROJECTION
TITLE				
TERMINAL, FAST TAB VRVR, 1812				
MOLEX INCORPORATED				
DOCUMENT NO.				SHEET NO.
SD-38002-039				1 OF 1
THIS DRAWING CONTAINS INFORMATION THAT IS PROPRIETARY TO MOLEX INCORPORATED AND SHOULD NOT BE USED WITHOUT WRITTEN PERMISSION				